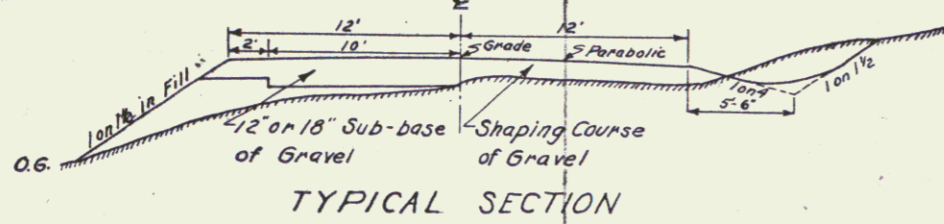
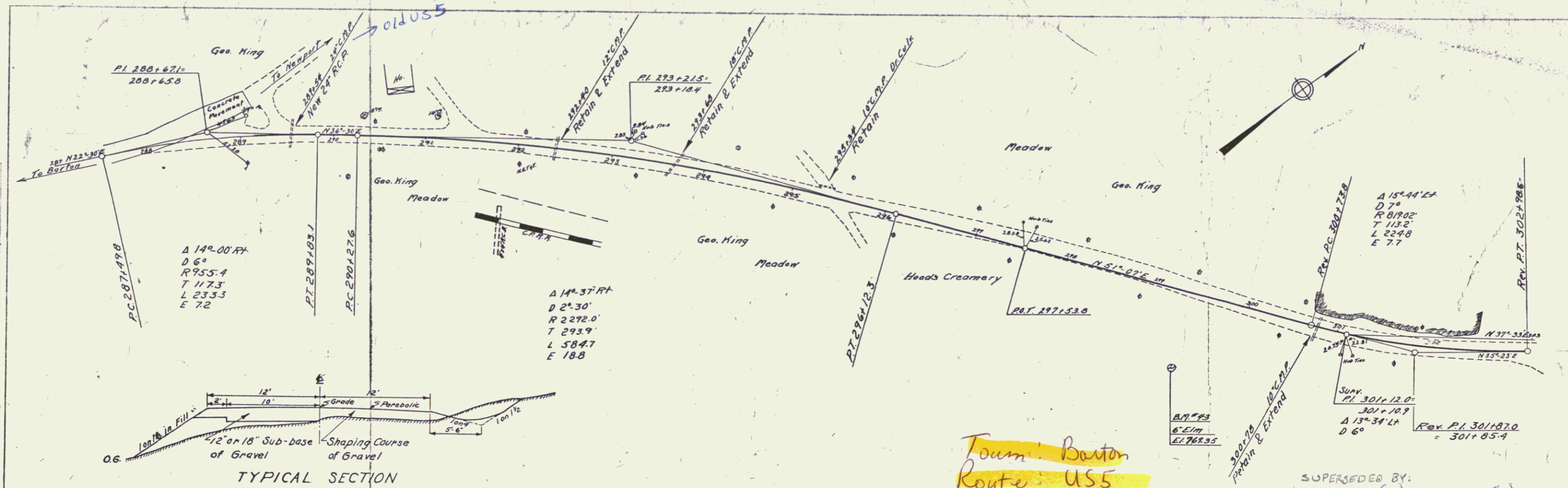


PLAN  
 SHEET NO. 202  
 DATE 7/14/39  
 DRAWN BY [Signature]  
 CHECKED BY [Signature]

FILE NO. 99R384  
 PROJECT BARTON-ORLEANS RD.  
 LOCATION [Blank]  
 YEAR 1939

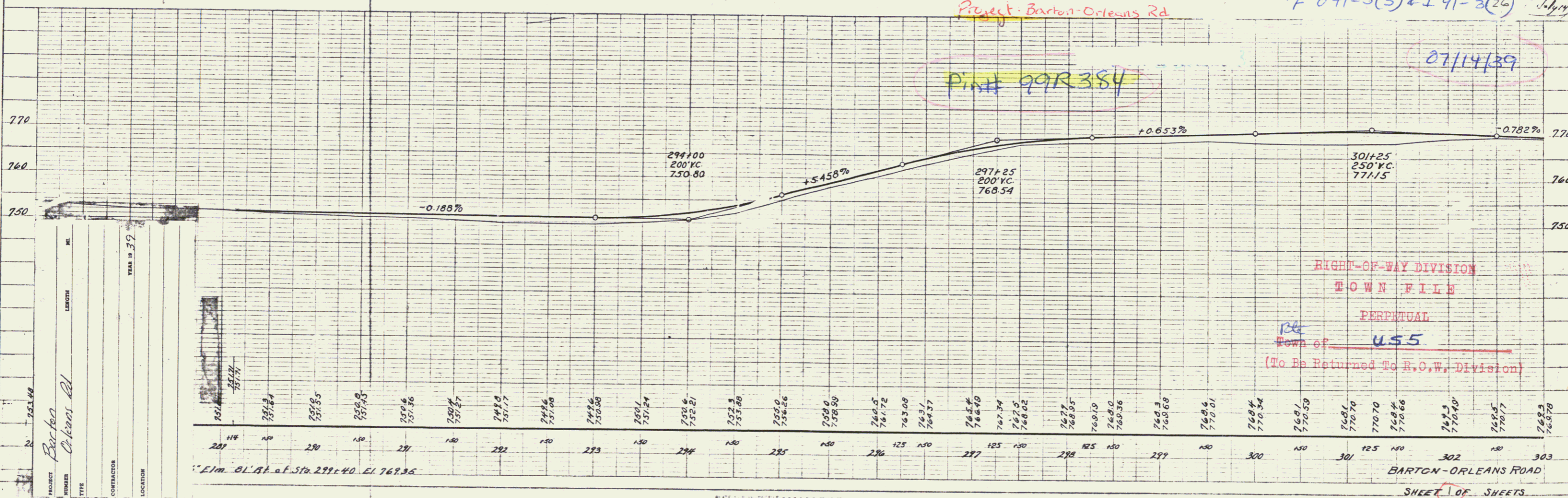


Town: Barton  
 Route: US5  
 Project: Barton-Orleans Rd.

SUPERSEDED BY:  
 F 041-5(3) & I 91-3(26) July 14/39

Pin# 99R384

07/14/39



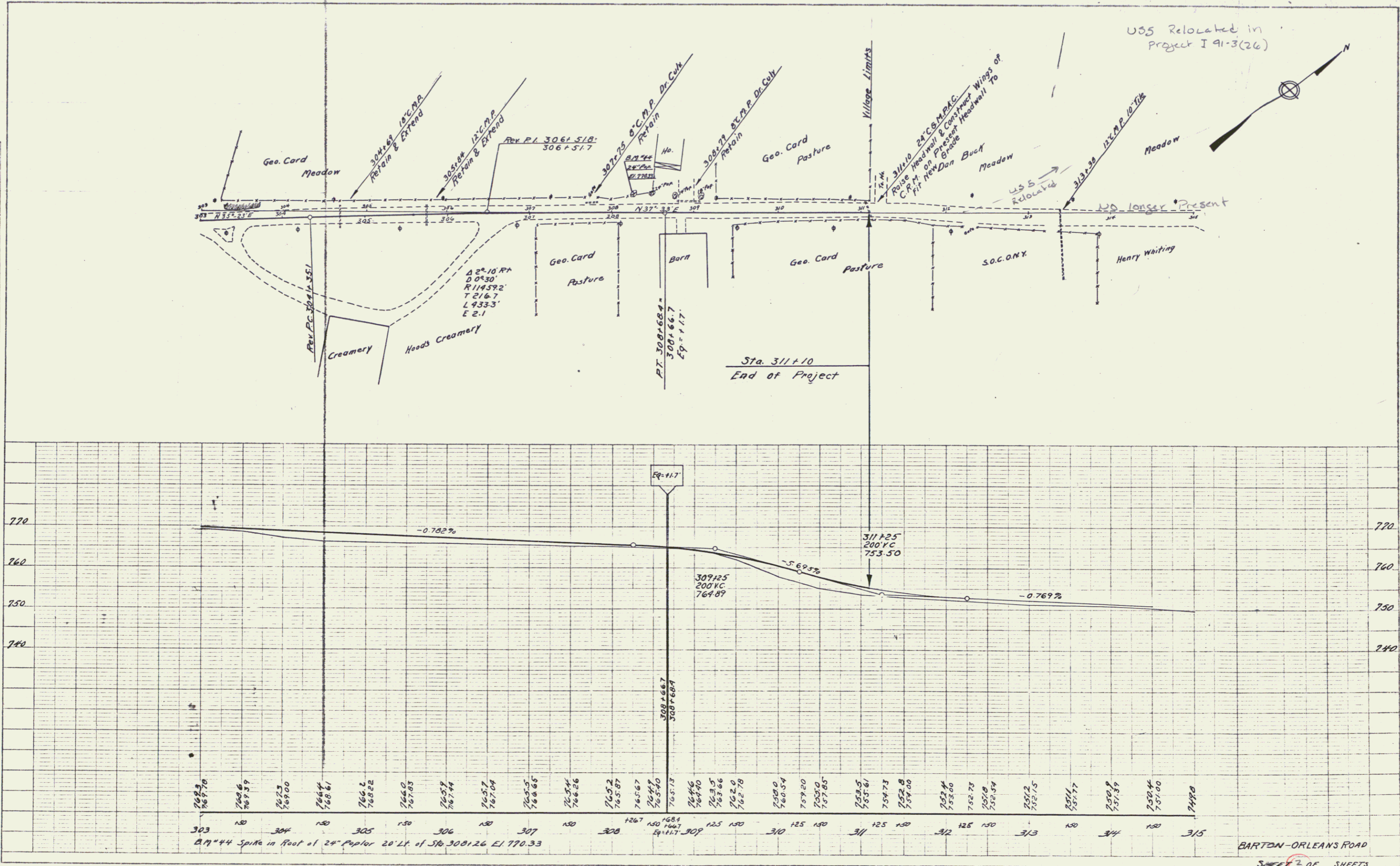
RIGHT-OF-WAY DIVISION  
 TOWN FILE  
 PERPETUAL  
 Town of US5  
 (To Be Returned To R.O.W. Division)

PROJECT Barton-Orleans Rd.  
 LOCATION [Blank]  
 YEAR 1939

1/2" E.M. O.L. AT ST. 299+40 E.L. 767.36  
 BARTON-ORLEANS ROAD  
 SHEET OF SHEETS

PLAN  
 DATE: 1/15/11  
 DRAWN BY: J. Kelly  
 CHECKED BY: J. Kelly  
 NO. 101

SECTION  
 DATE: 1/15/11  
 DRAWN BY: J. Kelly  
 CHECKED BY: J. Kelly  
 NO. 101

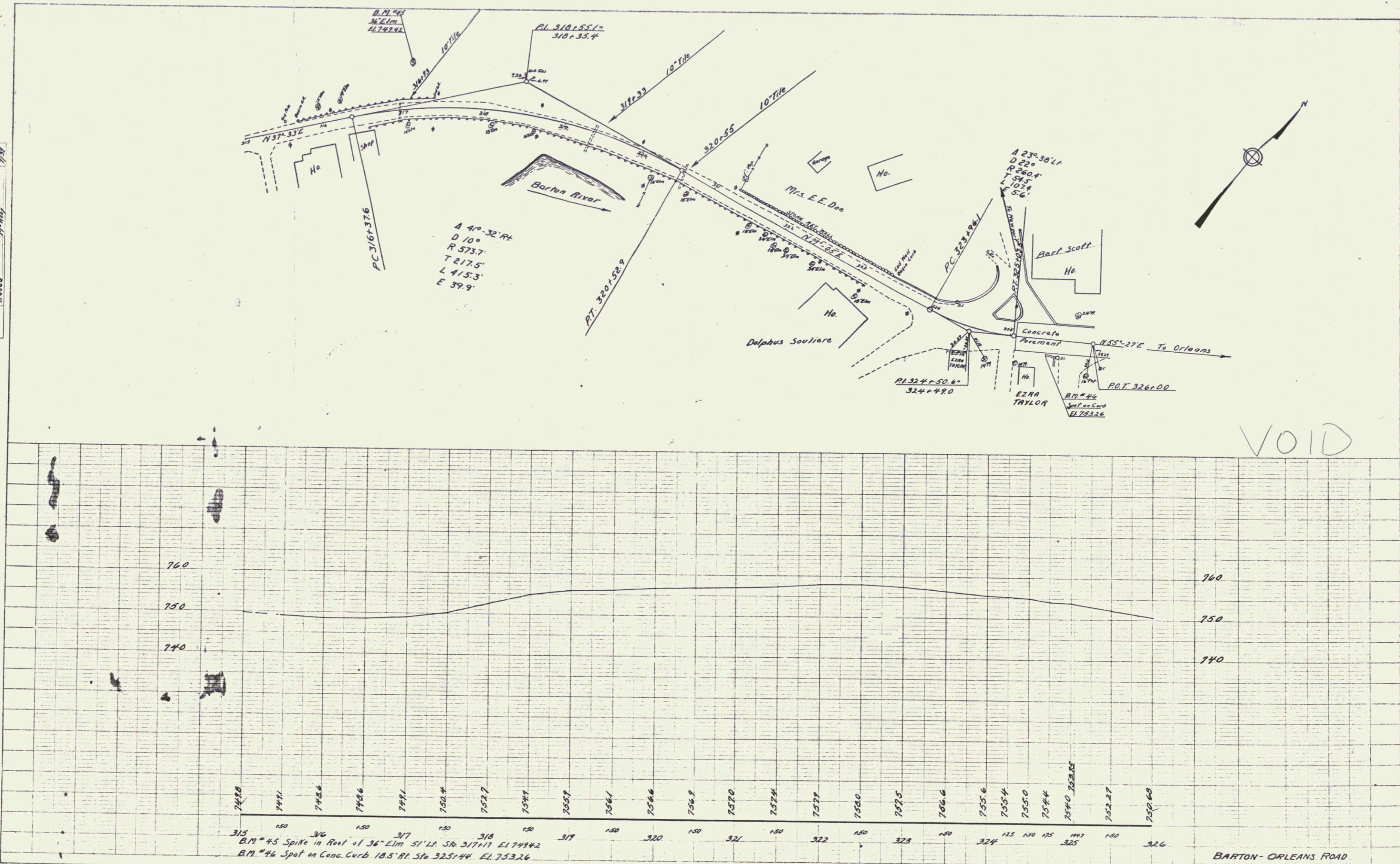


303	150	304	150	305	150	306	150	307	150	308	150	309	125	150	310	125	150	311	125	150	312	125	150	313	150	314	150	315	
762.3	762.7	762.6	762.3	766.2	766.0	765.7	765.5	765.2	765.1	765.2	765.2	765.2	765.2	765.2	765.2	765.2	765.2	765.2	765.2	765.2	765.2	765.2	765.2	765.2	765.2	765.2	765.2	765.2	765.2

BARTON-ORLEANS ROAD  
 SHEET 2 OF SHEETS

PLAN  
 DATE BOOK  
 DRAWN BY  
 CHECKED BY

PLAN  
 DATE BOOK  
 DRAWN BY  
 CHECKED BY



VOID

BARTON-ORLEANS ROAD  
 SHEET 3 OF SHEETS