

INDEX OF SHEETS

SHEET NO. 1	TITLE PAGE	
" 2	TYPICAL CROSS-SECTION OF IMPROVEMENT	} GRAVEL MIXED-IN-PLACE SURFACE COURSE
" 3	BANKING AND WIDENING TABLES	
" 4-6	PLAN AND PROFILE	
" 7	BARRICADES, SIGNS, AND LIGHTS SB-11	

FED. ROAD DIST. NO.	STATE	A.D.M. PROJ. NO.	FISCAL YEAR	SHEET NO.	TOTAL SHEETS
9	VT	114-B	1932	1	7

STATE OF VERMONT
STATE HIGHWAY DEPARTMENT

PLAN AND PROFILE OF PROPOSED
STATE HIGHWAY

FEDERAL AID PROJECT

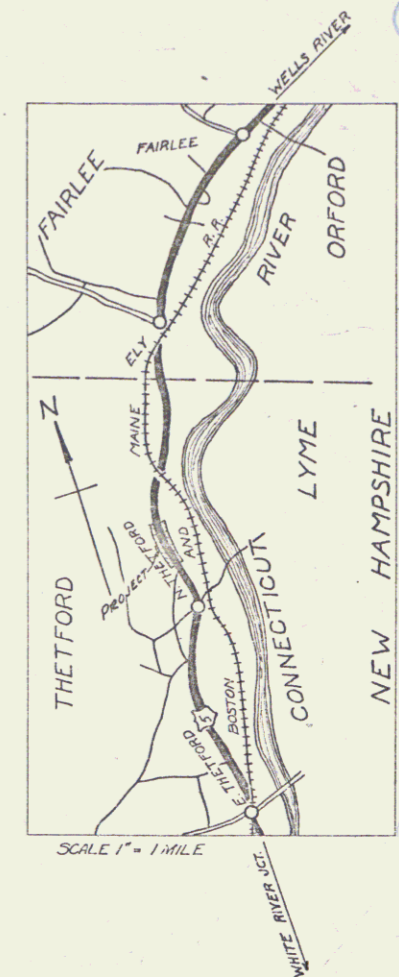
TOWN OF THETFORD
CONNECTICUT RIVER ROAD

Route: US5
Project: NR # 114-B

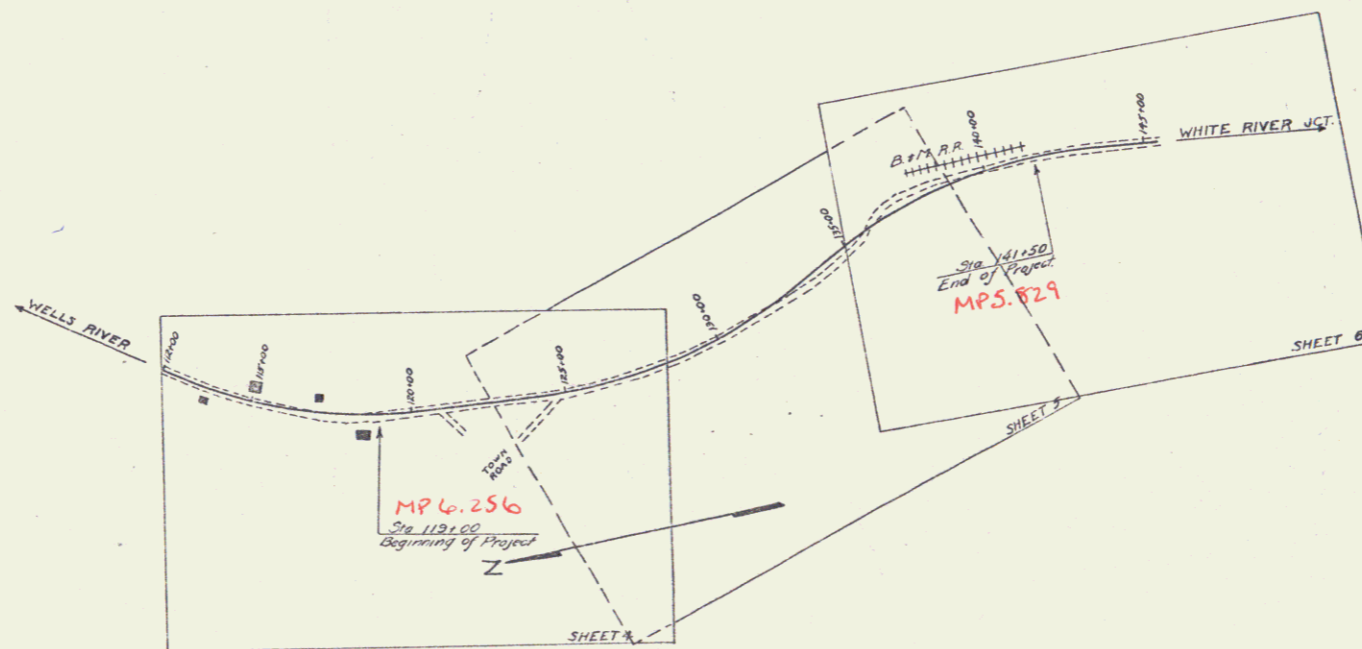
FROM 2700 FEET SOUTH OF RR CROSSING
SOUTH 0.426 MILES

Pin # 99R 381

LENGTH OF PROJECT 2250.9 FEET 0.426 MILES



(To Be Returned To R.O.W. Division)
Town of US5
THERETVAL
TOWN FILE
HIGHWAY DIVISION



CONVENTIONAL SIGNS

COUNTY LINE	GROUND ELEVATION	RAISE	LINE
TOWN LINE	GRADE ELEVATION	RAISE	LINE
FENCE LINE			
STONE WALL			
UNFENCED PROPERTY			
GUARD RAIL			
TRAVELED WAY			
RAILROAD			
RETAINING WALL			
CENTER LINE			
SURVEY LINE			
CULVERT			
DROP INLET			
TROLLEY POLE			
POWER POLE			
TELEPHONE POLE			
TREES			
HEDGE			

DEFLECTION ANGLE	Δ
DEGREE OF CURVE	D
RADIUS OF CURVE	R
TANGENT DISTANCE	T
LENGTH OF CURVE	L
EXTERNAL DISTANCE	E
POINT OF INTERSECTION	P. I.
POINT OF CURVE	P. C.
POINT OF TANGENT	P. T.
POINT ON TANGENT	P. O. T.

SCALES
TITLE PAGE 1" = 300'
PLAN SHEETS 1" = 30'
PROFILE HOR. 1" = 30'
PROFILE VERT. 1" = 10'
CROSS SECTIONS 1" = 5'

These Plans are subject to such revisions as may be required by the Bureau of Public Roads, or the Commissioner of Highways. Construction is to be carried on in accordance with the Standard Road and Bridge Specifications of 1930, with all subsequent approved revisions and such specifications and special provisions as are submitted with the plans.

APPROVED Oct 21, 1932 & Aug 11, 1933
W. E. Saugust
Commissioner of Highways
SUBMITTED BY ORDER OF THE STATE HIGHWAY BOARD

RECOMMENDED [Signature]
DISTRICT ENGINEER BUREAU OF PUBLIC ROADS
RECOMMENDED FOR APPROVAL [Signature]
CHIEF ENGINEER BUREAU OF PUBLIC ROADS
APPROVED [Signature]
DIRECTOR, BUREAU OF PUBLIC ROADS

CORRECT [Signature]
ROAD ENGINEER
SERIES NO. 114-B FILED
SHEET 1 OF 7

DIST # 4 Plans

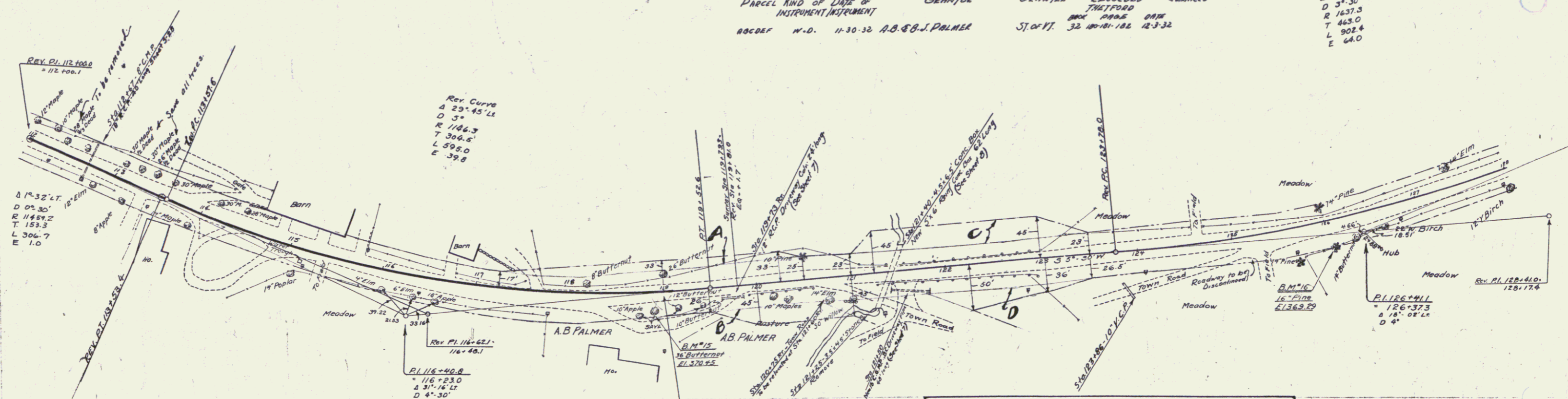
REINFORCED CONCRETE BOX CULVERTS
 STATION SIZE CONC. R. REIN. STEEL STRUT EXCA
 121+40 5'x6' 61.5y 3741" 51y

DRIVEWAY PIPE CULVERTS
 STATION LWR. TYP. SIZE LENG. CRM
 119+73 RT RCP 12" 24' 2.3y
 121+30 RT CG.P.P. BC 15" 40' 2.7y

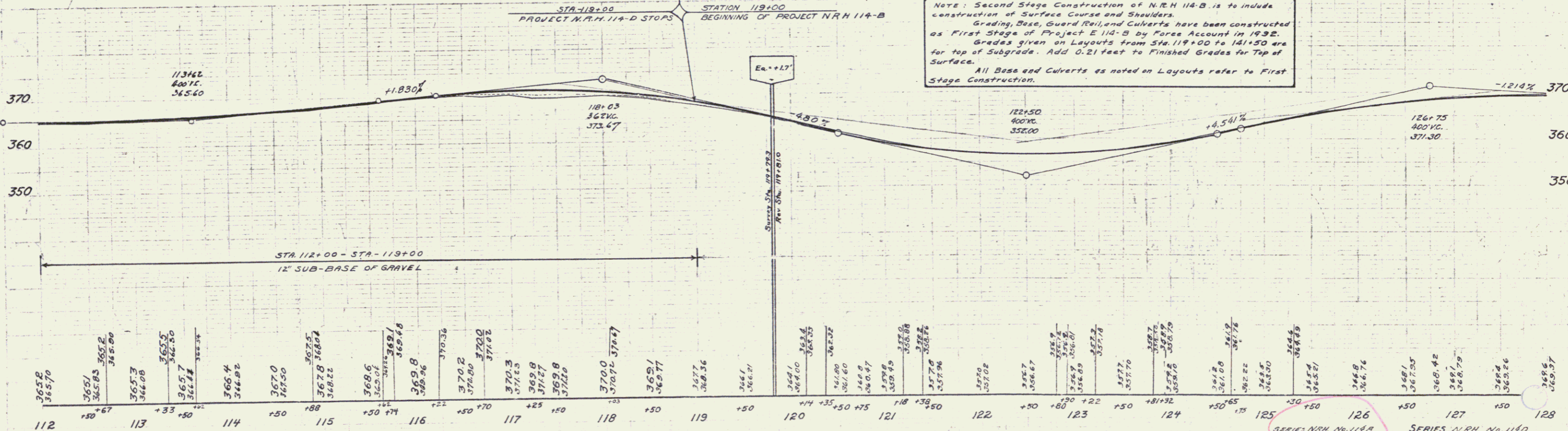
N.R.M.				
1	140	153	4	10
9	110	193	10	80

PARCEL KIND OF DATE OF GRANTEE GRANTEE RECORDED REHNS
 INSTRUMENT
 RECORD N.D. 11-30-32 A.B. & B.J. PALMER SJ OF VT. 32 100-181 126 12-3-32

REV. CURVE
 Δ 31° 35' 14"
 D 37' 30"
 R 1637.3
 T 463.0
 L 902.4
 E 64.0



NOTE: Second Stage Construction of N.R.H. 114-B is to include construction of Surface Course and Shoulders. Grading, Base, Guard Rail, and Culverts have been constructed as First Stage of Project E 114-B by Fore Account in 1932. Grades given on Layouts from Sta. 119+00 to 121+50 are for Top of Subgrade. Add 0.21 feet to Finished Grades for Top of Surface. All Base and Culverts as noted on Layouts refer to First Stage Construction.



B.M. #15 Spike in Root 36' Butternut, 19.5' Rt. Sta. 118+89 El. 370.45
 B.M. #16 " " " " 16' Pine 23' Rt. Sta. 126+08 El. 369.29

SERIES N.R.H. No. 114-B
 SHEET 10 OF 16
 SERIES N.R.H. No. 114-D
 SHEET 10 OF 80

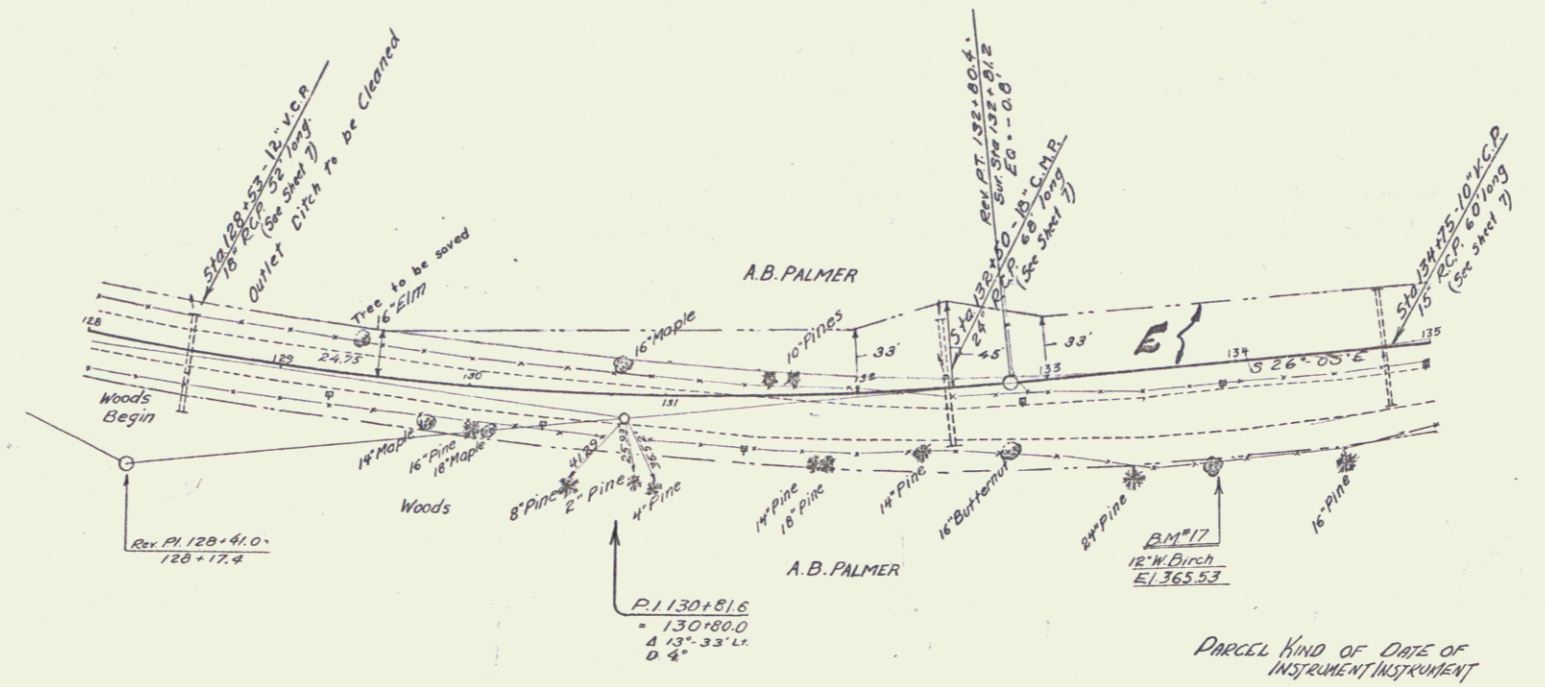
Barrett
Palmer
No. 31
Dec 29

Barrett
Palmer
No. 31
Dec 29

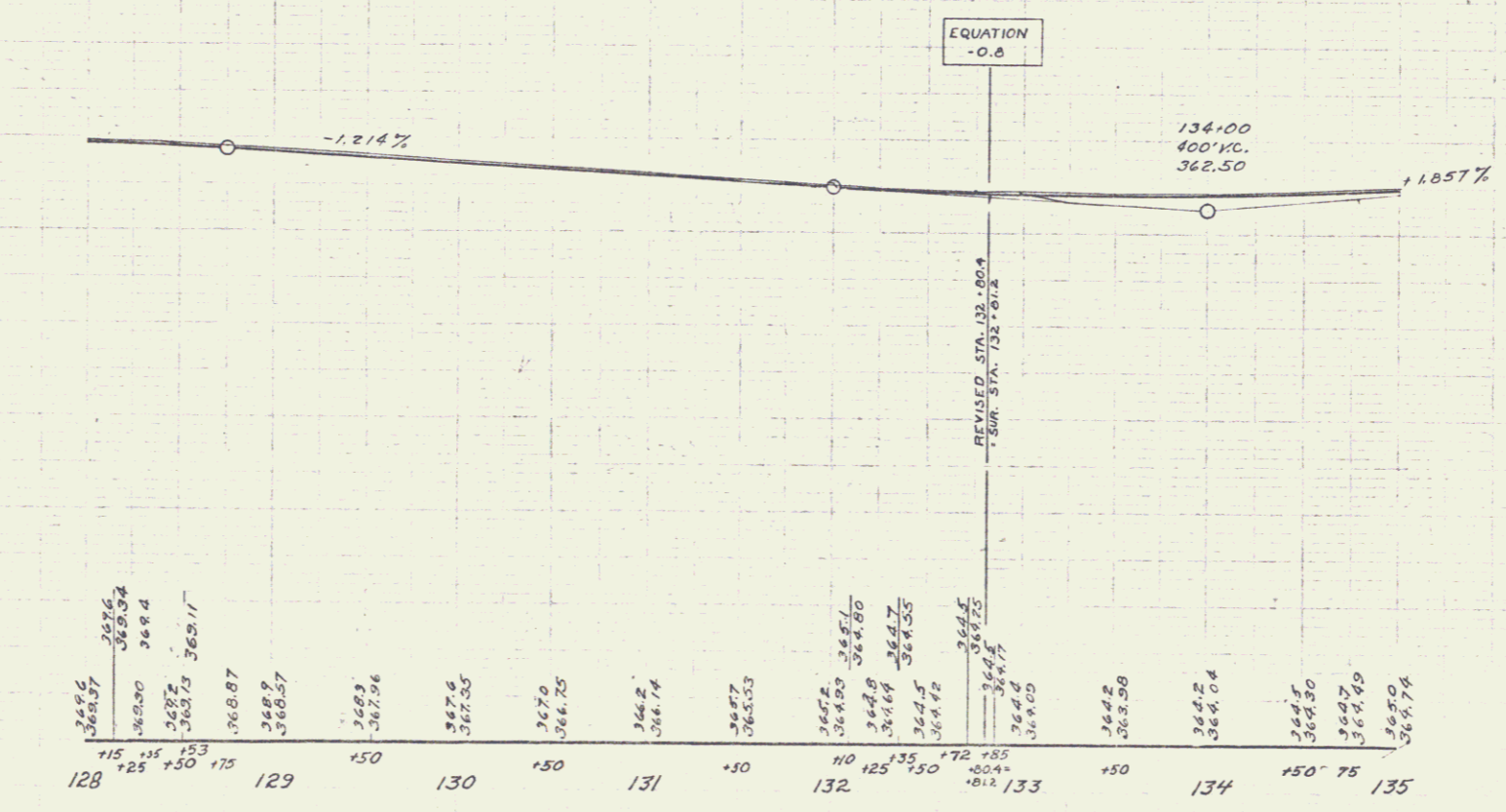
REINFORCED CONCRETE PIPE CULVERTS

STATION	SIZE	LENG.	CEM.
128+53	18"	52'	35.7
132+50	24"	68'	34.7
134+75	15"	66'	27.7

N.A.H.
1140 1733 5 18

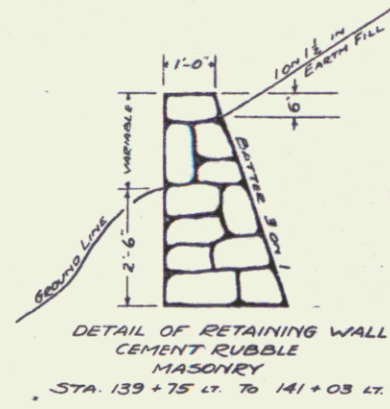


PARCEL KIND OF DATE OF GRANTOR GRANTEE RECORDED REMARKS
 INSTRUMENT INSTRUMENT
 No. 227 N.D. 1130.32 A.B. & B.J. PALMER GRANTEE JAMES FORD
 304 1286.6 DME 32 100 101 102 2-332



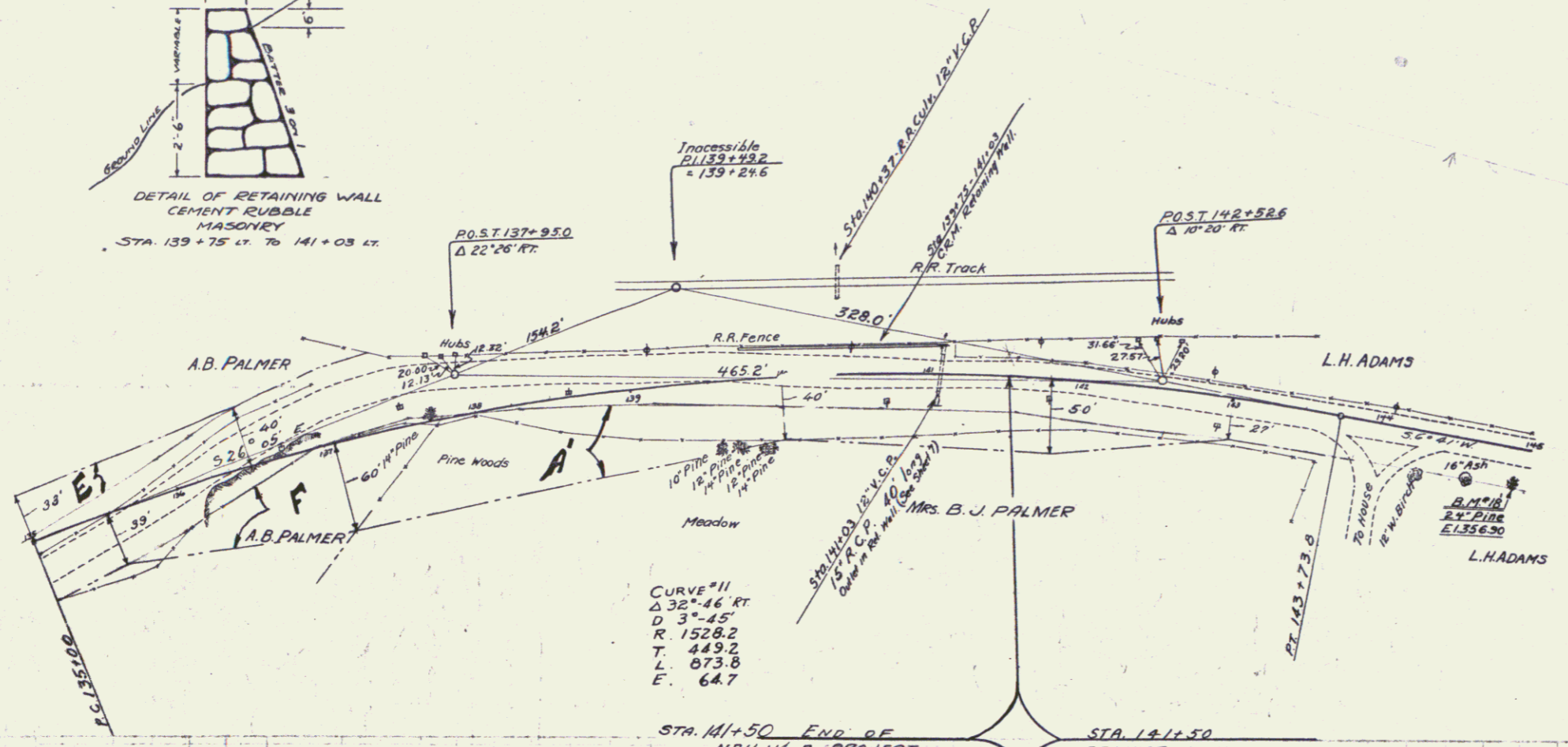
B.M. #17 Spike in 12" W. Birch 50' RT STA. 133+82 E1.365.53

SERIES No. 1140
SHEET 5 OF 18

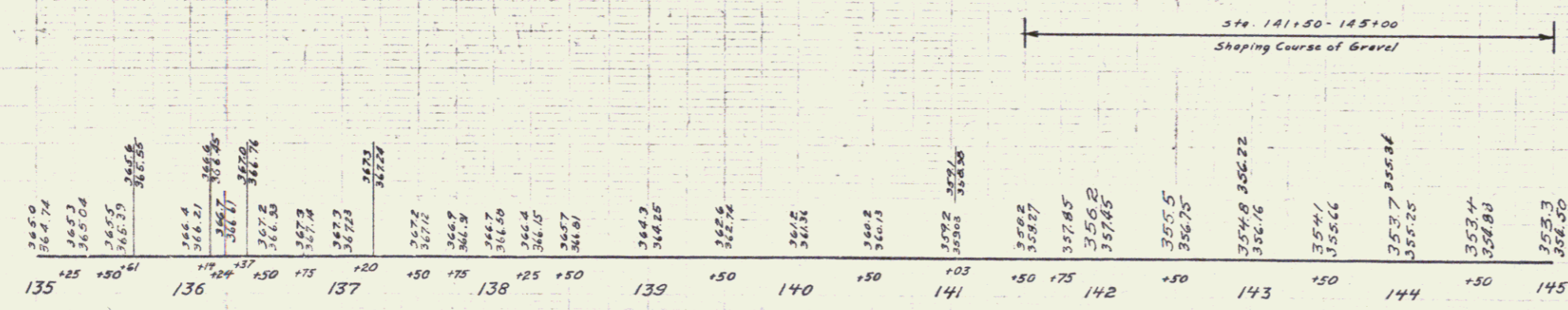
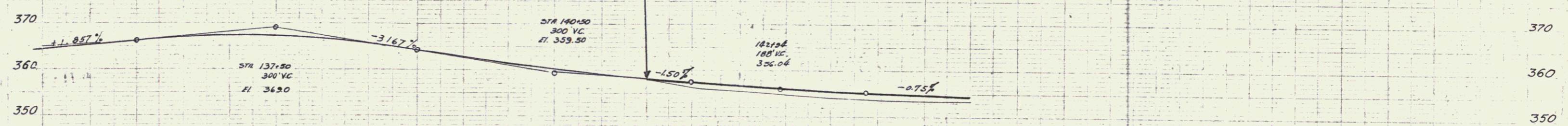


REINFORCED CONCRETE PIPE CULVERTS				CEMENT RUBBLE MASONRY RETAINING WALL			
STATION	SIZE	LENG.	GRM.	STA. TO STA.	LENG.	LENG.	GRM.
141+03	15"	40'	14.7	139+75 - 141+03	28'	128'	62.7

NRH					
NO.	VE.	DATE	BY	SCALE	REMARKS
1140	1140	1933	11	80	



PARCEL	KIND OF INSTRUMENT	DATE OF INSTRUMENT	GRANTOR	GRANTEE	RECORDED	REMARKS
ABCOEF	M.D.	11-30-32	A. B. & B. J. PALMER	52 of 11	32	100-101-102-12-3-32
"	"	11-25-32	1860 D. J. PALMER	"	32	78 11-27-32



B.M. #18 Spike in Root 24" Pine 18.5' RT. STA. 144+92 El. 356.90

SERIES NRH No. 1140
SHEET 6 OF 18
SERIES NRH No. 1140
SHEET 11 OF 80