

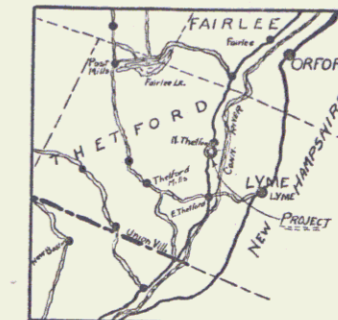
INDEX OF SHEETS

SHEET NO.	TITLE PAGE
1	TITLE PAGE
2	TYPICAL CROSS-SECTION OF IMPROVEMENT
3	PLAN AND PROFILE STA. 1+50 TO 3+50
4	S.L.B. 20 NO. C.R. 20' SPAN 30' SKEW WITH GRAVEL
5	S.B. NO. 2 TYPICAL DETAILS
6	S.L.A.G. NO. 12' HEIGHT 30' SKEW
7-8	CROSS SECTIONS
9	S. NO. 19 STANDARD STRUCTURES

FED. ROAD DIST. NO.	STATE	F.R. YEAR	FISCAL YEAR	SHEET NO.	TOTAL SHEETS
9	Vt.	1948		1	3

STATE OF VERMONT
STATE HIGHWAY DEPARTMENT

PLAN AND PROFILE OF PROPOSED
STATE HIGHWAY
FEDERAL AID PROJECT



THETFORD

Route: US 5

BRIDGE OVER TURNPIKE BROOK Project: FR 14B

LOCATED IN NORTH THETFORD VILLAGE

Pin# 99R380

LENGTH 200 FEET 0038 MILES

Scales
Plan 1"=20'
Vertical 1"=20'
Horizontal 1"=20'
Sections 1"=5'

THIS PROJECT TO BE CONSTRUCTED IN ACCORDANCE WITH STANDARD SPECIFICATIONS ON FILE WITH THE U.S. BUREAU OF PUBLIC ROADS. APPROVED 7/4/48.

STRUCTURES ON THIS PROJECT TO BE CONSTRUCTED IN ACCORDANCE WITH DETAILS GIVEN ON STANDARD STRUCTURE SHEETS.

MP 5,061-5,023
RIGHT-OF-WAY DIVISION
TOWN FILE
PERPETUAL
Town of US 5
(To Be Returned To R.O.W. Division)

APPROVED: JULY 2, 1928

H. E. Sargent
CHIEF ENGINEER

District No. 7
Bridge No. 59
Thetford

SUBMITTED BY ORDER OF THE STATE HIGHWAY BOARD

S. B. Potts
COMMISSIONER OF HIGHWAYS

CONVENTIONAL SIGNS

COUNTY LINE	GROUND ELEVATION	DATUM	LINE
TOWN LINE	GRADE ELEVATION	DATUM	LINE
FENCE LINE			
STONE WALL			
UNFENCED PROPERTY			
GUARD RAIL			
TRAVELED WAY			
RAILROAD			
RETAINING WALL			
CENTER LINE			
SURVEY LINE			
CULVERT			
DROP INLET			
TROLLEY POLE			
POWER POLE			
TELEPHONE POLE			
TREES			
HEDGE			

CURVE DATA

DEFLECTION ANGLE	Δ
DEGREE OF CURVE	D
RADIUS OF CURVE	R
TANGENT DISTANCE	T
LENGTH OF CURVE	L
EXTERNAL DISTANCE	E
POINT OF INTERSECTION	P. I.
POINT OF CURVE	P. C.
POINT OF TANGENT	P. T.
POINT ON TANGENT	P. O. T.

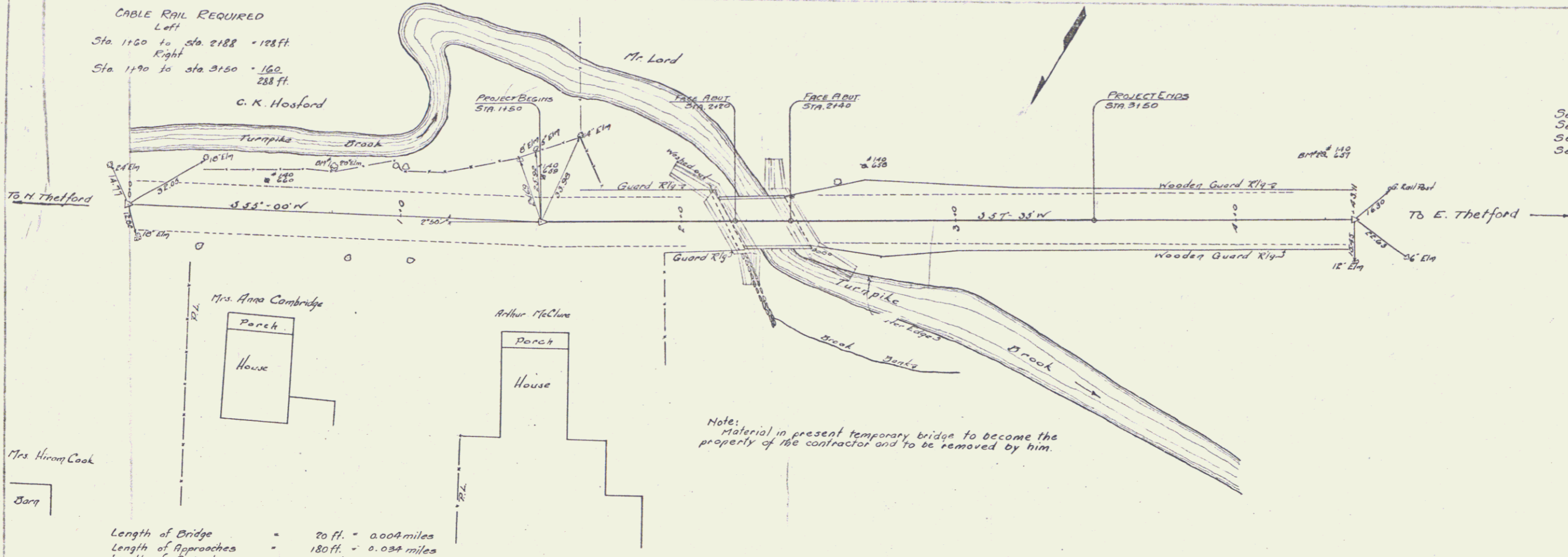
RECOMMENDED [Signature]
DISTRICT ENGINEER BUREAU OF PUBLIC ROADS

RECOMMENDED FOR APPROVAL [Signature]
CHIEF ENGINEER BUREAU OF PUBLIC ROADS

APPROVED [Signature]
DIRECTOR - BUREAU OF PUBLIC ROADS

SERIES F.R. NO. 14-B FILED
SHEET 1 OF 3

DIST. # 4 PLANS 1



CABLE RAIL REQUIRED
 Left
 Sta 1160 to sta. 2188 - 128 ft.
 Right
 Sta 1190 to sta. 2150 - 160 ft.
 288 ft.

DATE	BY	FR	CHKD	DATE	BY
9	VT	190		3	9

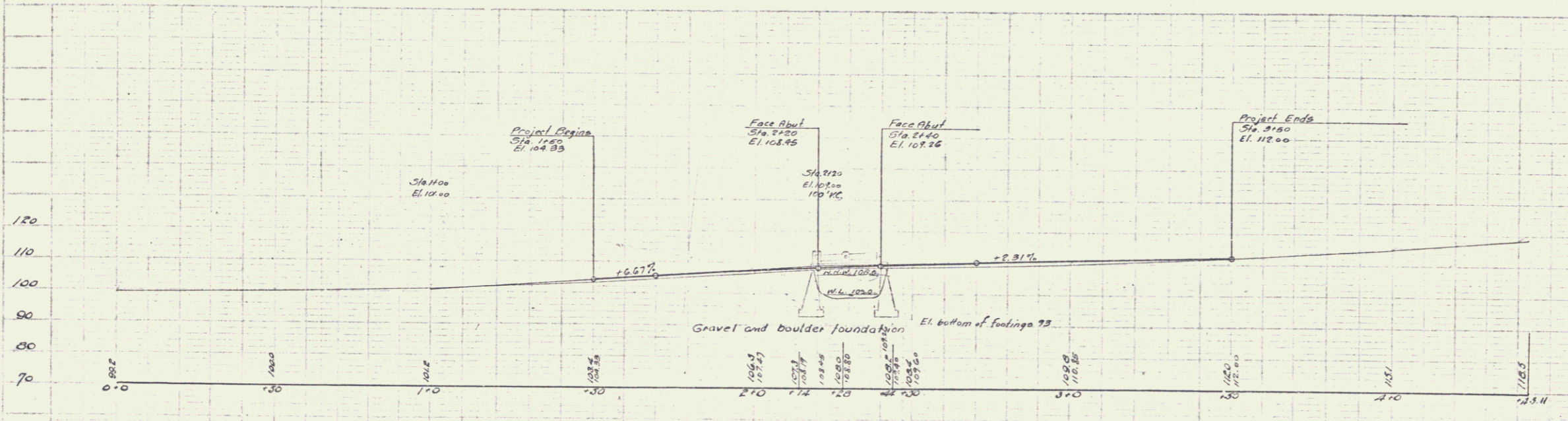
LIST OF SHEETS
 Series 51B No. CR 20' span 30' skew with Gravel
 Series 5B No. 2 TYPICAL DETAILS
 Series 51AB 30' SKEN 12' height
 Series 5 No. 19 STANDARD STRUCTURES

Length of Bridge = 20 ft. = 0.004 miles
 Length of Approaches = 180 ft. = 0.034 miles
 Length of Project = 200 ft. = 0.038 miles

Note:
 Material in present temporary bridge to become the property of the contractor and to be removed by him.

SUMMARY OF QUANTITIES

ITEM	DESCRIPTION	cu. yds	170
10-11	Com. Exc. inc. Borrow		
15	Struth. Exc.		310
20A	Gravel Surface		108
34A	Conc. Class A		34
34B	Conc. Class B		178
35	Reinf. Steel	125	5230
55	Temporary Bridge		1 Lump sum
67	Cable Guard Rail	111	288



BM #1 RR spike 10' Lt. of Sta. 0+75 in 20' Elm. El. 100.00
 BM #2 Spike in 4' 23' Lt. of Sta. 4+33 El. 114.88

CORRECT
 A. D. Bishop
 BRIDGE ENGINEER

DISTRICT 7
 BRIDGE 39
 THETFORD
 June 1, 2010

SHEET 3 OF 3 SHEETS