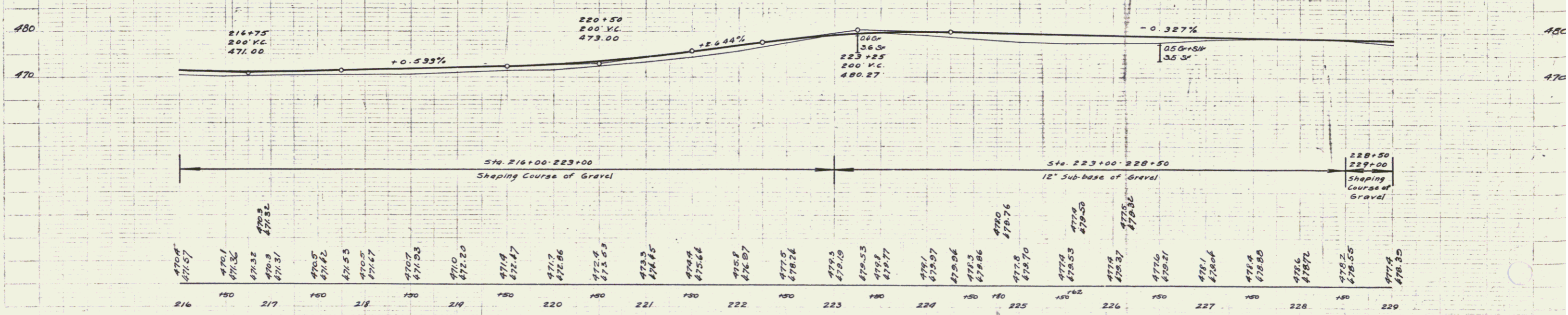
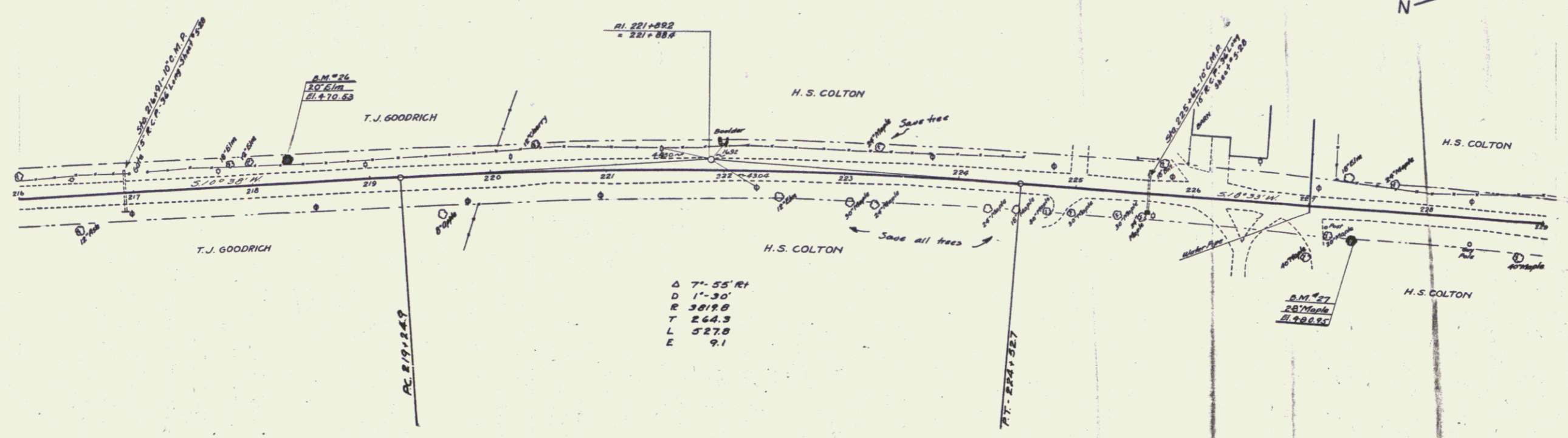


Wood  
 F. Hayward  
 Engineer - Civil

Wood  
 S. B. B. B.



B.M. #26 Spike in Root of 20' Elm 17 ft. H. Sta. 216+20 Elev 470.53  
 B.M. #27 " " " of 28' Maple 21 ft. H. Sta. 227+27 Elev 480.95