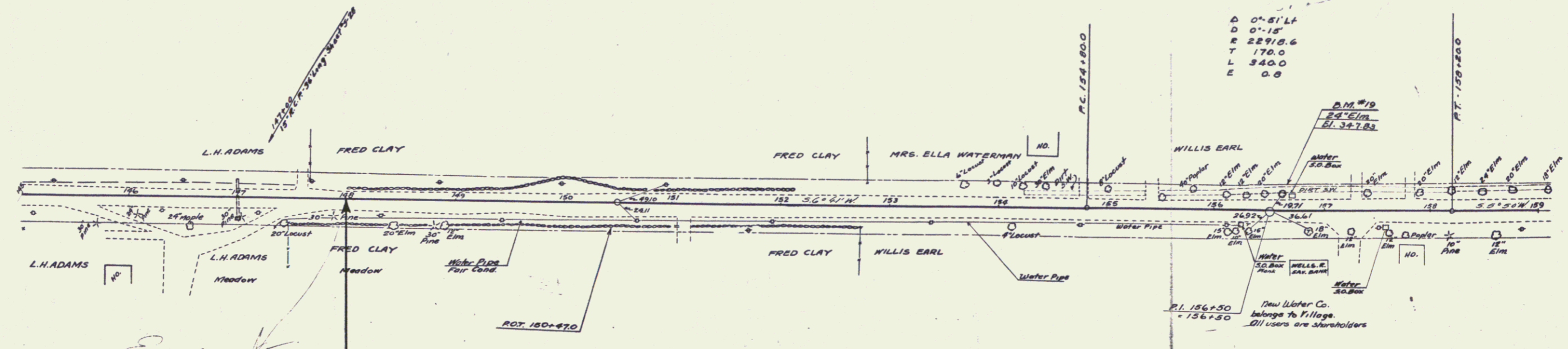
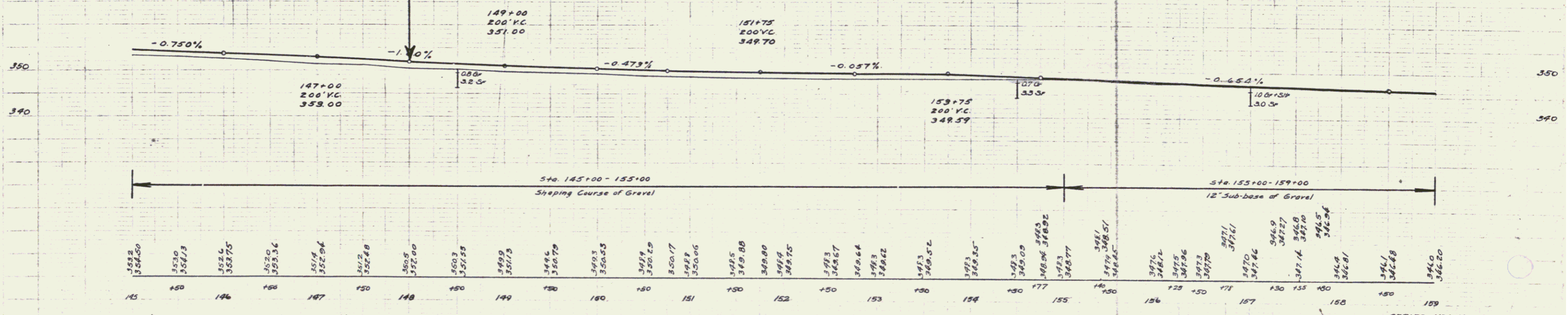


D 0'-61.4'
 D 0'-15'
 R 22918.6
 T 170.0
 L 840.0
 E 0.8



End

STA. 148+00 PROJECT ENDS
 STA. 148+00 BEGINNING OF NON-GOV'T PARTICIPATION



B.M. #19 Spike in Road 24' Elm 15ft. N Sta. 150+41 Elev. 347.83