

INDEX OF SHEETS

SHEET NO.	PAGE	DESCRIPTION
1	1	CROSS-SECTION OF IMPROVEMENT 2 1/2" GRUNDED GRAVEL MIXED-IN-PLACE SURFACE COURSE WITH REFINED TAR, CLASS C, ITEM 341
2	2	UTILITY SHEET (ITEMS AND DRAINAGE)
3	3	WORK SHEETS
4-5	4-5	AND PROFILE
6	6	PILES OF 180' METAL PLATE PIPE
7	7	GUARD RAIL STRUCTURE SHEET S-40 BARRICADES, SIGNS AND LIGHTS.
8	8	GUARD RAIL STRUCTURE SHEET S-41 ROUNDING OF SLOPES
9	9	GUARD RAIL STRUCTURE SHEET S-46-45 BOUNDARY MARKERS
10	10	GUARD RAIL STRUCTURE SHEET S-47-45 PIPE CULVERTS
11	11	GUARD RAIL STRUCTURE SHEET S-48-46 GUARD RAIL
12	12	SECTION
13-14	13-14	CROSS SECTIONS
15-17	15-17	SECTIONS

STANDARD STRUCTURE SHEETS APPROVED BY THE CHIEF ENGINEER, VERMONT STATE DEPARTMENT OF HIGHWAYS.

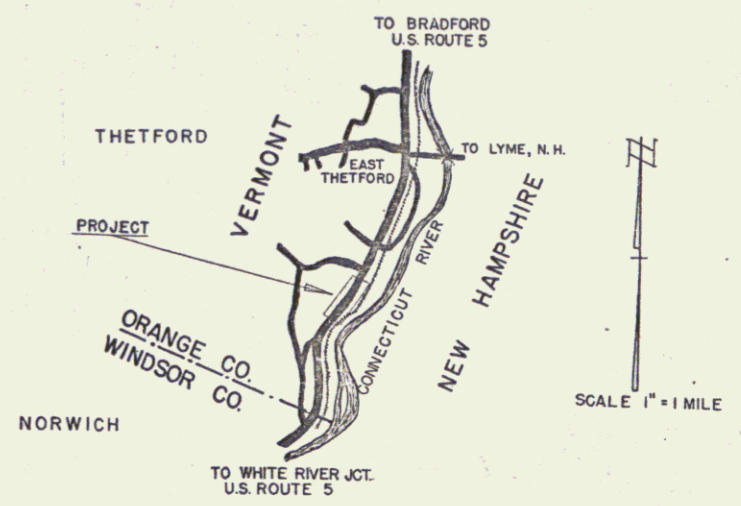
S-40 FEB. 28, 1949
 S-45 FEB. 28, 1949
 S-46 FEB. 28, 1949
 S-47 MAY 13, 1946

(To Be Returned To R.O.W. Division)
 Form of U.S.
 PERPETUAL
 TOWN FILE
 RIGHT-OF-WAY DIVISION

STATE OF VERMONT
 STATE HIGHWAY DEPARTMENT

PLAN AND PROFILE OF PROPOSED
 STATE HIGHWAY
 FEDERAL PROJECT
 TOWN OF THETFORD
 COUNTY OF ORANGE
 WHITE RIVER JCT.-BRADFORD ROAD
 U.S. ROUTE 5 Pin # 992 377

FED. ROAD DIV. NO.	STATE	PROJ. NO.	SHEET NO.	TOTAL SHEETS
1	VT.	F 114 (14)	1	17



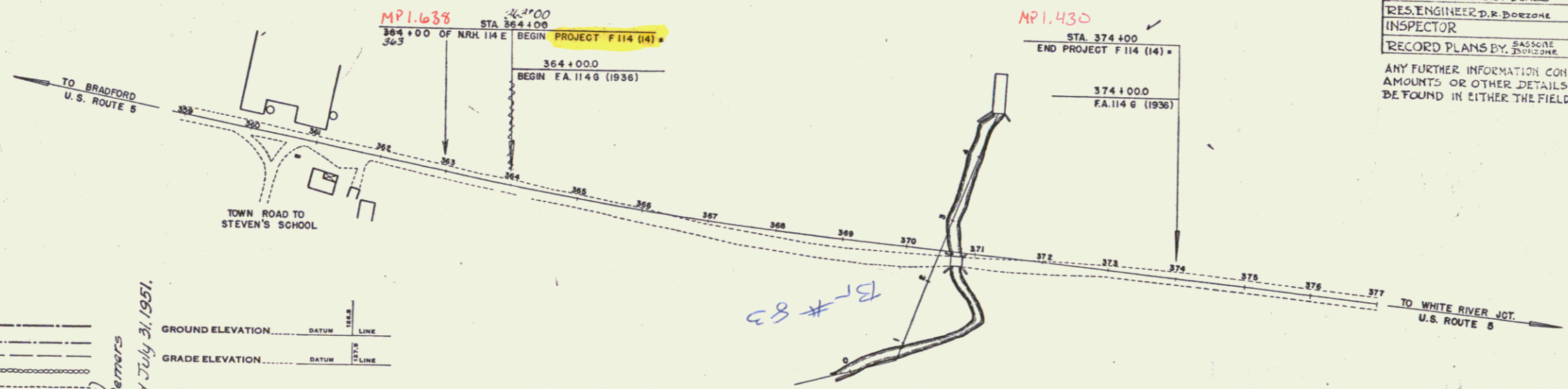
BEGINNING AT A POINT APPROXIMATELY 1.62± MILES NORTH OF THE THETFORD-NORWICH TOWN LINE AND EXTENDING SOUTHERLY 1,000 FEET.

LENGTH OF PROJECT 1,000 FT. = 0.189 MI.

PROJECT NAME AND NUMBER	TYPE	PAVEMENT AREA
THETFORD F 114 (14)	CRUSHED GRAVEL, 2 1/2" OVERLAY, 1 1/2" BASE, 1 1/2" SUB-BASE	2,933 S.Y.
RECORD PLANS		
MATERIALS		
BORROW	D. TILLEN FIT METAL GUARD RAIL, BLACK P.T. BARRIERS	
GRAVEL	COLLIERIE, VT. GUARD RAIL WHITE P.T. FRANKLIN, VT.	
TAR	SHARPLEY CO. WAREHOSE, MASS. RIPRAP AT U.S. ROAD, VT.	
CRUSHED GRAVEL	COLLIERIE, VT. RIPRAP AT U.S. ROAD, VT.	
ACCGMP	BERGER METAL CULV. CO.	
160°CG.M.P.D.	BERGER METAL CULV. CO.	
GUARD RAIL CABLE	BERGER METAL CULV. CO.	
CONTRACTOR	LUCIEN DEMERS	CONTRACT DATED AUG. 16, 1950.
RES. ENGINEER	D.R. BOZONE	CONTRACT STARTED AUG. 19, 1950.
INSPECTOR		CONTRACT COMPLETED JULY 31, 1951.
RECORD PLANS BY	BASSACRE ENGINEERS	CONTRACT ACCEPTED JULY 31, 1951.

ANY FURTHER INFORMATION CONCERNING FINAL QUANTITIES AMOUNTS OR OTHER DETAILS RELATIVE TO THIS PROJECT MAY BE FOUND IN EITHER THE FIELD BOOK OR THE ESTIMATE FILE.

APPROVED: *June 9, 1950*
H. E. Sargent
 CHIEF ENGINEER
 SUBMITTED BY ORDER OF THE STATE HIGHWAY BOARD



GROUND ELEVATION	DATUM	LINE
.....
GRADE ELEVATION	DATUM	LINE
.....

DEFLECTION ANGLE	Δ
DEGREE OF CURVE	D
RADIUS OF CURVE	R
TANGENT DISTANCE	T
LENGTH OF CURVE	L
EXTERNAL DISTANCE	E
POINT OF INTERSECTION	P. I.
POINT OF CURVE	P. C.
POINT OF TANGENT	P. T.
POINT ON TANGENT	P. O. T.

TITLE	SCALE
TYPICAL	1" = 100'
PLAN	1" = 50'
PROFILE HORIZONTAL	1" = 50'
PROFILE VERTICAL	1" = 10'
CROSS SECTIONS	1" = 5'

THETFORD F 114 (14)
 Contract by Lucien Demers
 Construction completed July 31, 1951.
 CONTRACTOR: Lucien Demers
 LOCATION: White River St. Bradford Rd.
 U.S. Rte. 5

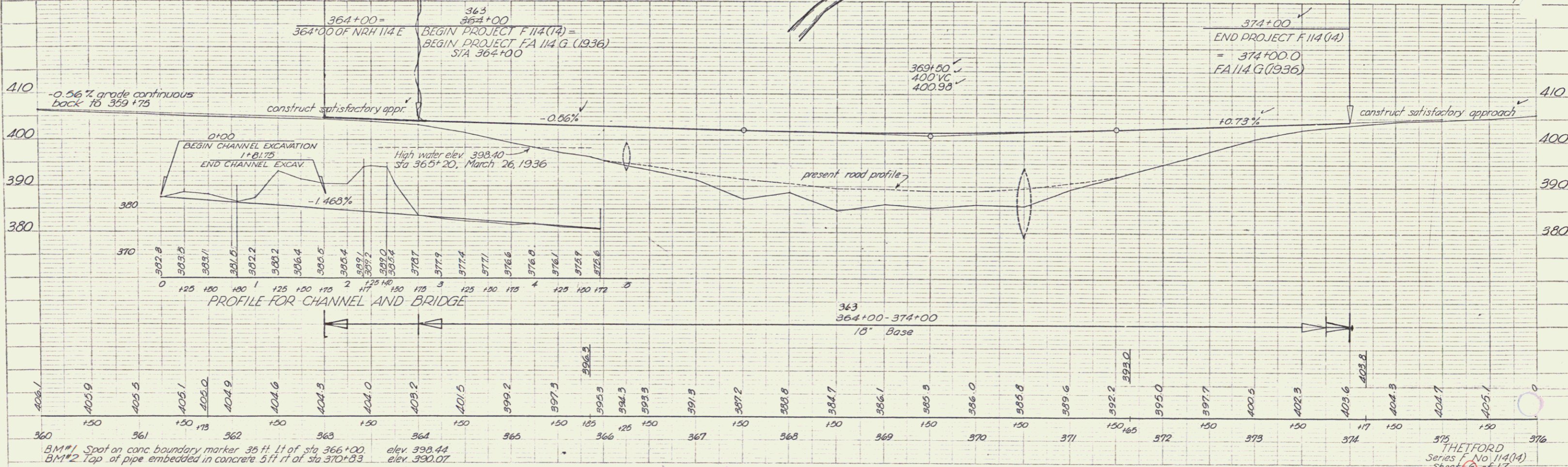
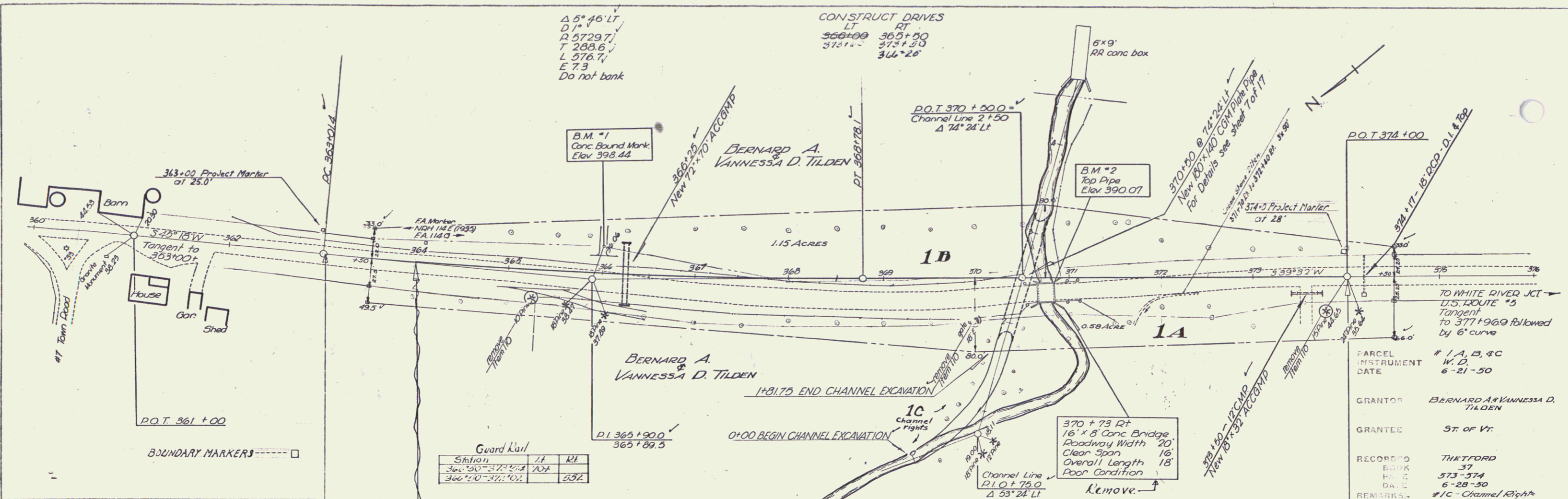
THESE PLANS ARE SUBJECT TO SUCH REVISIONS AS MAY BE REQUIRED BY THE BUREAU OF PUBLIC ROADS OR THE COMMISSIONER OF HIGHWAYS.
 CONSTRUCTION IS TO BE CARRIED ON IN ACCORDANCE WITH THE PLANS AND THE STANDARD ROAD AND BRIDGE SPECIFICATIONS OF PUBLIC ROADS JULY 25, 1949 BY THE BUREAU OF PUBLIC ROADS INCLUDING ALL SUBSEQUENT APPROVED REVISIONS AND SUCH REVISED SPECIFICATIONS AND SPECIAL PROVISIONS AS ARE SUBMITTED WITH THE PLANS.

DEPARTMENT OF COMMERCE
 BUREAU OF PUBLIC ROADS
 RECOMMENDED FOR APPROVAL
 DISTRICT ENGINEER
 APPROVED
 DIVISION ENGINEER

APPROVED: *June 23, 1950*
 DISTRICT HIGHWAY COMMISSIONER
 SERIES F No. 11409 FILED
 SHEET 1 OF 17

DATE	
BY	
REVISIONS	
1. PLAN	REVISED
2. ALIGNED	REVISED
3. PROFILE	REVISED
4. CONSTRUCTION	REVISED
5. AS-BUILT	REVISED
6. EROSION CONTROL	REVISED
7. FILL	REVISED
8. DRAINAGE	REVISED
9. UTILITIES	REVISED
10. OTHER	REVISED

NO.	DATE	BY	DESCRIPTION
1			
2			
3			
4			
5			
6			
7			
8			
9			
10			



B.M. #1 Spot on conc boundary marker 35 ft ft of sta 366+00. elev 398.44
 B.M. #2 Top of pipe embedded in concrete 5 ft ft of sta 370+33. elev 390.07

$\Delta 5^{\circ}46'LT$
 $D1 = 114.5$
 $R = 5729.7'$
 $T = 288.6'$
 $L = 378.7'$
 $E = 7.3$
 Do not bank

CONSTRUCT DRIVES
 LT RT
 $366+00 \quad 363+90$
 $370+00 \quad 373+20$
 $374+00 \quad 366+28$

Guard Rail

Station	L1	L2
364+00	372+00	100'
366+00	372+00	100'

TO WHITE RIVER JCT
 U.S. ROUTE #5
 Tangent to 377+96.9 followed by 6' curve
 PARCEL # 1, A, B, & C
 INSTRUMENT W. D. 6-21-50
 GRANTOR BERNARD A. & VANESSA D. TILDEN
 GRANTEE ST. OF VT.
 RECORDED THETFORD 37
 BOOK 573-374
 DATE 6-28-50
 REMARKS #1C - Channel Right

THETFORD
 Series No. 114(14)
 Sheet 6 of 17