

- 1 TITLE PAGE
- 2 TYPICAL SECTION (GRADING AND DRAINAGE)
- 3 QUANTITY SHEET
- 4 ITEM DETAIL AND DRAINAGE SHEET
- 5 EARTHWORKS
- 6-11 PLAN AND PROFILE SHEETS
- 12 INTERSECTION DETAILS
- 13 A-6 DRILLING AND BLASTING
- 14 B-1 BANKING TABLES
- 15 B-5 TYPICAL SLOPE GRADING
- 16 B-10 EMBANKMENT ON A SLOPE
- 17 B-16 DIVISIONAL ISLANDS - STORAGE LANES
- 18 D-2 CEMENT RUBBLE MASONRY
- 19 D-4 DRAINAGE
- 20 D-8 R.C.P.D.I.
- 21 BLANK
- 22 D-13 CONCRETE CATCH BASIN
- 23 E-1 BARRICADES, SIGNS AND LIGHTS
- 24 E-9 CONSTRUCTION IDENTIFICATION SIGNS
- 25 BLANK
- 26 BLANK
- 27 BLANK
- 28-59 CROSS SECTIONS

CONTRACT NAME & NUMBER	TYPE PAVEMENT AREA
WESTMINSTER	CONCRETE
CONTRACTOR: PERINI CORP. - FRAMINGHAM, MASS. RECORD PLANS - K.W. PINKHAM - OCT. 17, 1963. CONST. COMP. - JAN. 10, 1965.	

- * STAGE 2 CONSTRUCTION - INDEX
- 1 TITLE PAGE
- 2 TYPICAL SECTIONS - SUBBASE & SURFACE
- 3 QUANTITY - ITEMS
- 4 ITEM DETAIL AND DRAINAGE SHEET
- 5 EARTHWORKS
- 6-11 LAYOUTS & PROFILES
- 12 INTERSECTION DETAILS
- 13 SIGN SUMMARY
- 14 SIGN LOCATION
- 15 SIGN DESIGN
- 16 B-1 BANKING TABLE
- 17 B-15 ENTRANCE & EXIT TERMINALS
- 18 B-16 DIVISIONAL ISLAND
- 19 C-1 CURBS
- 20 D-3 SUTTERS
- 21 D-8 D.I.'S
- 22 D-10 D.I. TOPS
- 23 D-11 CATCH BASIN GRATES
- 24 D-13 CATCH BASINS
- 25 D-18 PRECAST CURB D.I.'S
- 26 E-1 BARRICADES, SIGNS & LIGHTS
- 27 E-3 REGULATORY SIGNS
- 28 E-4 ROUTE MARKERS
- 29 E-5A SIGN POST FOOTINGS
- 30 E-6 WARNING & GUIDE SIGNS
- 31 E-7 SIGN PLACEMENT
- 32 E-9 FEDERAL AID IDENTIFICATION SIGNS
- 32-A E-10 OVERLAP PLYWOOD SIGNS
- 33 G-3 THREE CABLE GUARD RAIL
- 34 G-4 MARKER POSTS
- 35 J-1 PROJECT MARKERS
- 36-68 CROSS SECTIONS

WESTMINSTER F 341-1(2), (3)
 CONTRACTOR - PERINI CORP. - FRAMINGHAM, MASS.
 STAGE 1
 RECORD PLANS - K.W. PINKHAM - OCT. 17, 1963.
 CONST. COMP. - JAN. 10, 1965.

Town of Westminster

U.S. ROUTE #5 TO INTERSTATE

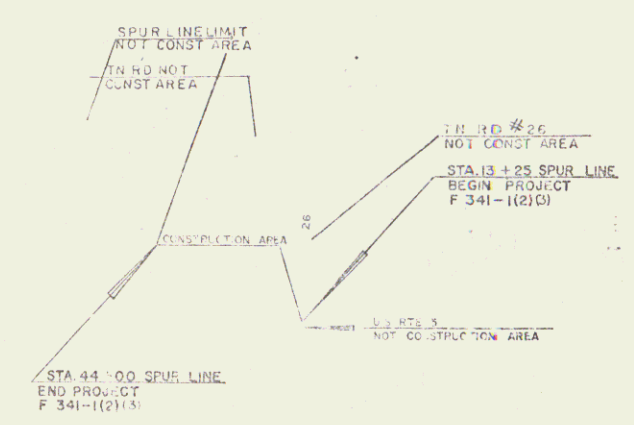
BEGINNING AT A POINT 5.892 MILES NORTHERLY OF PUTNEY-WESTMINSTER TOWN LINE AND EXTENDING WESTERLY 0.582 MILES

LENGTH OF PROJECT 3,075 FEET = 0.582 MILES

Project: F 341-1(2) (3)
 Pin # 99R374
 Route: ST HWY

DESIGN DESIGNATION	ADT (1960)	ADT (1975)	DHV (E75)	T	V MPH
	1210	2330	405	56	8%
				50	50

REINFORCING STEEL - BETHLEHEM STEEL CORP. - BETHLEHEM, PA.
 REINFORCED CONCRETE PIPE - MARTIN MARIETTA CO. - WINDSOR, VT.
 A.C.C. METAL PIPE - NORTHEASTERN METAL CULVERT CO. - WESTMINSTER, VT.
 WOOD GUIDE POSTS - ST. GEORGE & CO. INC. - ESSEX JCT., VT.
 CONTRACTOR - PERINI CORP. - FRAMINGHAM, MASS.
 RES. ENG. - ST. MORRIS.
 INSPECTOR - J. W. PINKHAM & H.E. GROSS.
 RECORD PLANS - K.W. PINKHAM.
 CONTRACT DATED - DEC. 26, 1961.
 STARTED - FEB. 23, 1962.
 COMPLETED - JAN. 17, 1963.
 ACCEPTED - JAN. 17, 1963.



RIGHT-OF-WAY DIVISION
 TOWN FILE
 PERPETUAL
 Town of US-5
 (To Be Returned To R.O.W. Division)

STAGE 2 CONSTRUCTION
 SHEET 1 OF 68 SHEETS

E. H. [Signature] 8/2/61
 L. C. [Signature] 8/2/61
 R. O. [Signature] 8/2/61
 G. M. [Signature] 8/2/61
 A. C. [Signature] 8/2/61

F 341-1
 1 59

Granite Slope Edging
Item No. 556-A
20+00 to 18+52 Lt. Line "A"
17+15 to 18+50 Lt. Line "A"
17+20 Lt. Sta. 5 to 17+22 Lt. Sta. 5 (Move)
13+86 Lt. to 14+38 Lt. Spur Line (Move)

Channel Excavation of Earth
Item No. 106-A
23+50 Lt. to 24+00 Lt. Spur Line

CONSTRUCT DRIVES
20+40 LT BRT

Three Cable Guard Rail with Steel Posts,
Item No. 553
20+00 to 25+00 Lt.
20+00 to 25+00 Rt.

Bituminous Concrete Cure
Item No. 555
20+00 to 25+00 Rt.

BITUMINOUS CONCRETE GUTTER ITEM 361-B
20+50 RT

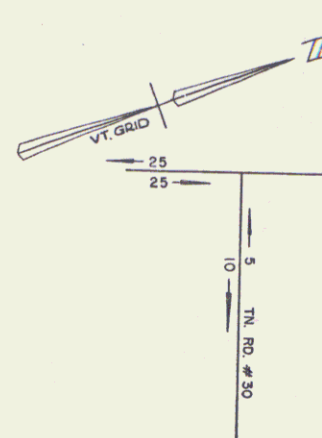
PUB. NO.	STAT.	FED. AID PROJECT NO.	FISCAL YEAR	SHEET NO.	TOTAL SHEETS
1	VT	F 341-1	1980	13	68

Δ 6° 35' 43" RT
D 98'
R 1145.9'
T 683.0'
L 1021.9'
E 188.2'
BANK 15/16' PER FT.

SEEDING, ITEM 611
COMMERCIAL FERTILIZER FOR GRASSES, ITEM 615
TOPSOIL, ITEM 621
16+17 - 18+52 LINE "A" ISLAND

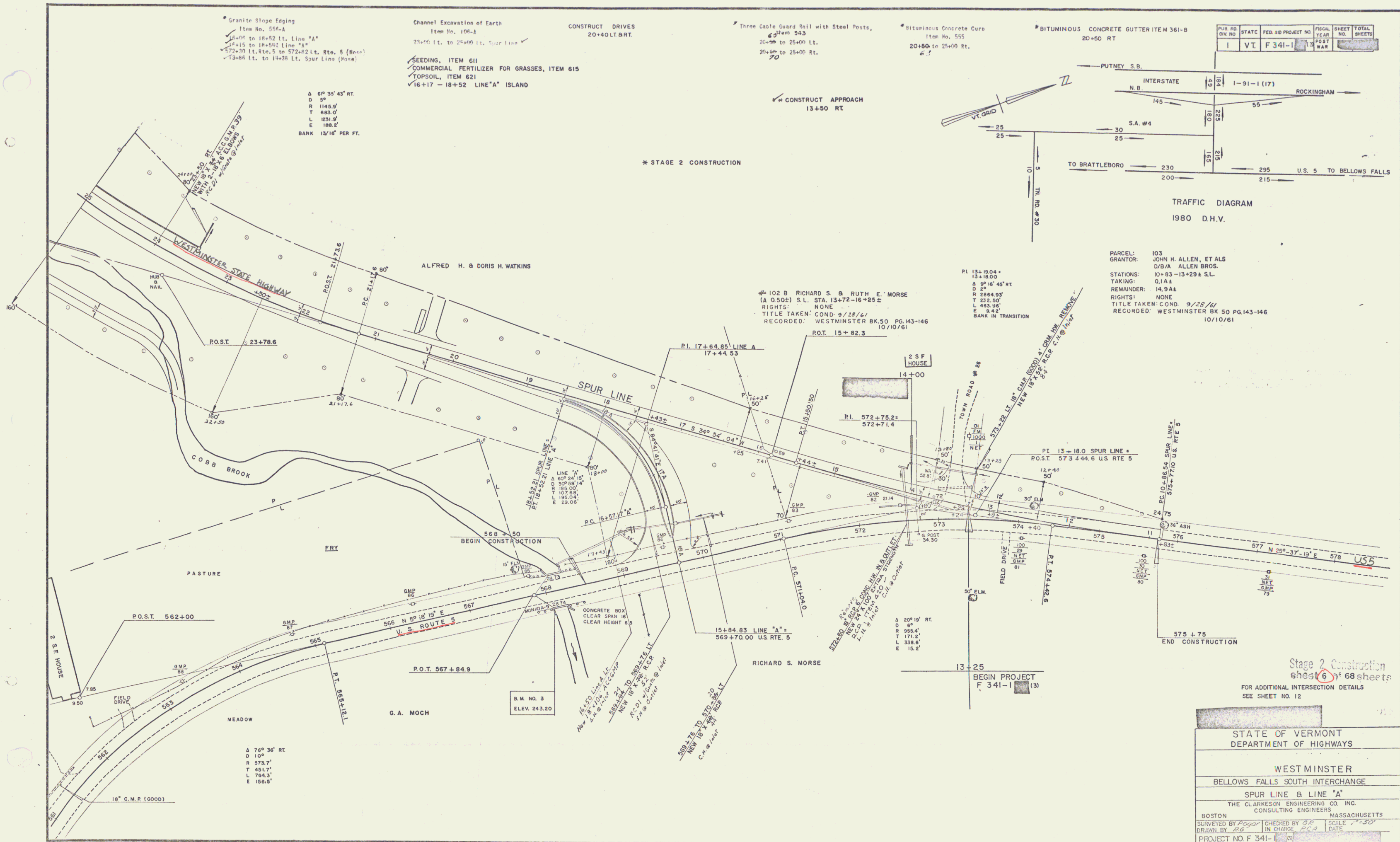
CONSTRUCT APPROACH
13+50 RT

* STAGE 2 CONSTRUCTION



TRAFFIC DIAGRAM
1980 D.H.V.

PARCEL: 103
GRANTOR: JOHN H. ALLEN, ET ALS
D/B/A ALLEN BROS.
STATIONS: 10+83 - 13+29 ± S.L.
TAKING: 0.141
REMAINDER: 14.941
RIGHTS: NONE
TITLE TAKEN: COND. 9/28/67
RECORDED: WESTMINSTER BK 50 PG. 143-146
10/10/61



Stage 2 Construction
Sheet 6 of 68 sheets

FOR ADDITIONAL INTERSECTION DETAILS
SEE SHEET NO. 12

STATE OF VERMONT DEPARTMENT OF HIGHWAYS	
WESTMINSTER	
BELLOWS FALLS SOUTH INTERCHANGE	
SPUR LINE & LINE "A"	
THE CLARKSON ENGINEERING CO. INC. CONSULTING ENGINEERS BOSTON MASSACHUSETTS	
SURVEYED BY <i>P. G. G.</i>	CHECKED BY <i>P. G. G.</i>
DRAWN BY <i>P. G. G.</i>	IN CHARGE <i>P. G. G.</i>
PROJECT NO. F 341-1	SCALE 1" = 30'

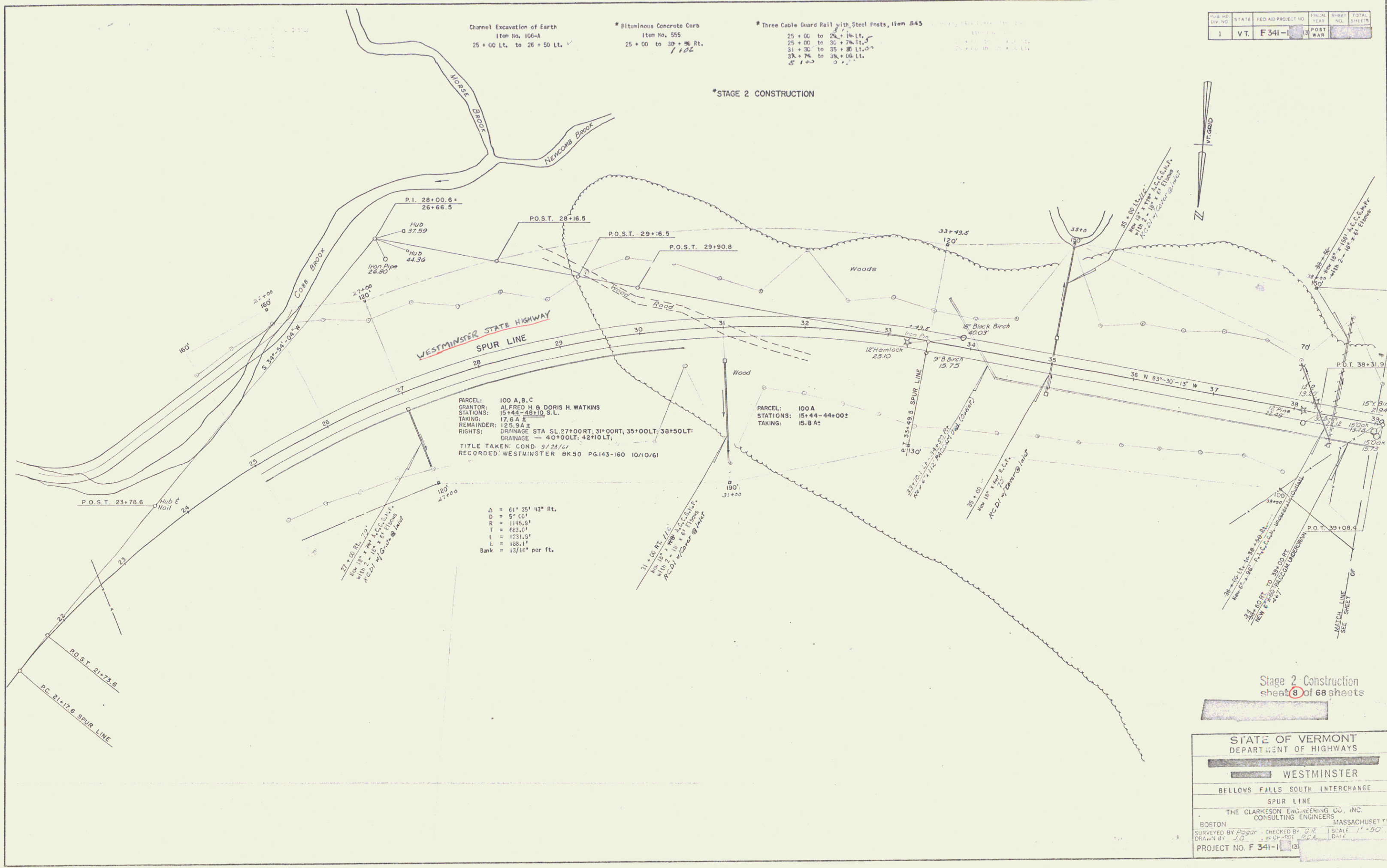
Channel Excavation of Earth
Item No. 106-4
25 + 00 Lt. to 26 + 50 Lt.

* Bituminous Concrete Curb
Item No. 555
25 + 00 to 39 + 96 Rt.
102

* Three Cable Guard Rail with Steel Posts, Item 545
25 + 00 to 26 + 24 Lt.
25 + 00 to 30 + 74 Rt.
31 + 30 to 35 + 86 Lt.
38 + 74 to 38 + 06 Lt.
103

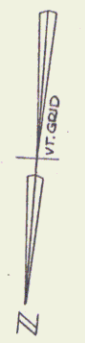
CIVIL NO.	STATE	FED AID PROJECT NO.	POST MILE	SHEET NO.	TOTAL SHEETS
1	VT.	F 341-1	13	13	68

*STAGE 2 CONSTRUCTION



PARCEL: 100 A, B, C
GRANTOR: ALFRED H & DORIS H WATKINS
STATIONS: 15+44-48+10 S.L.
TAKING: 17.6 A ±
REMAINDER: 125.9 A ±
RIGHTS: DRAINAGE STA. SL 27+00 RT; 31+00 RT; 35+00 LT; 38+50 LT;
DRAINAGE — 40+00 LT, 42+00 LT.
TITLE TAKEN: COND. 9/23/64
RECORDED: WESTMINSTER BK 50 PG 143-160 10/10/61

Δ = 61° 25' 43" Rt.
D = 57' 60"
R = 1195.5'
T = 682.4'
L = 1231.5'
E = 188.1'
Bank = 12/11" per ft.



Stage 2 Construction
sheet 8 of 68 sheets

STATE OF VERMONT
DEPARTMENT OF HIGHWAYS

WESTMINSTER

BELLOWS FALLS SOUTH INTERCHANGE

SPUR LINE

THE CLARKSON ENGINEERING CO., INC.
CONSULTING ENGINEERS
BOSTON MASSACHUSETTS

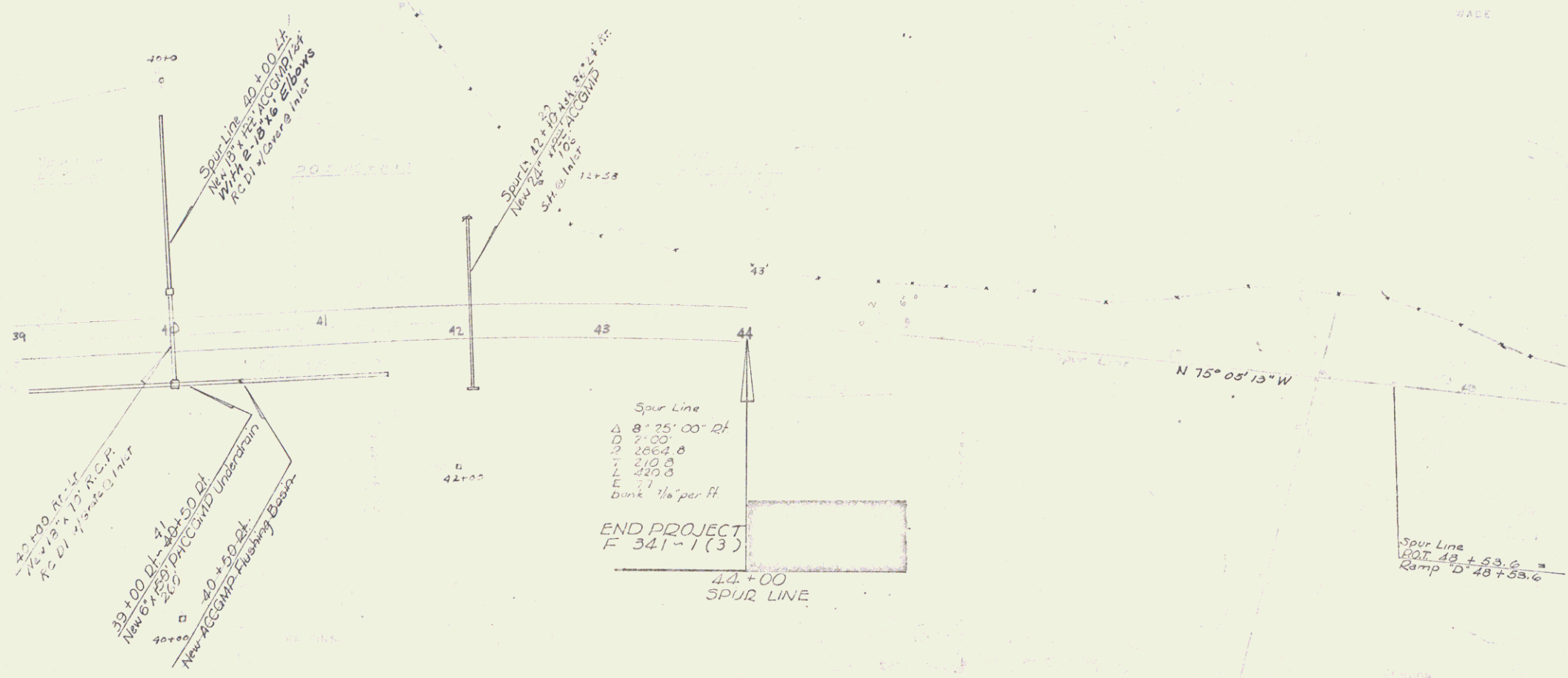
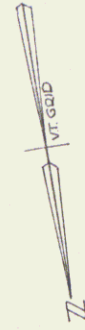
SURVEYED BY [Signature] CHECKED BY [Signature] SCALE 1" = 50'
DRAWN BY [Signature] DATE [Signature]

PROJECT NO. F 341-1

* THREE CABLE GUARD RAIL w/ STEEL POSTS
 8 ITEM 54330
 39+00 Lt - 40+00 Lt
 41+00 Lt - 44+00 Lt
 25 30
 41+00 Rt - 42+00 Rt

* STAGE 2 CONSTRUCTION

RANGE 07 0
 STATION 10+55-44+00
 DATE 11/11
 RIGHTS NONE
 TILES TAKEN 9/28/61
 RECORDED WESTMINSTER BOOK 22113-116
 11/11/61



21+00 Rt - Lt
 7/2 x 7/2 x 75 A.C.P.
 7/2 Dia. 1/2 x 1/2 1/2 in. r.
 39+00 Lt - 40+00 Lt
 New 6 x 6 x 250
 41+00 Lt
 New ACCGMP Underdrain
 40+00 Lt
 New ACCGMP Flashing Device

Spur Line
 Δ 8' 25" 00' 24"
 7' 00"
 2004.0
 210.0
 120.0
 Bank 1/4" per ft

END PROJECT
 F 341-1(3)

Spur Line
 48+53.6
 Ramp D 48+53.6

Stage 2 Construction
 sheet 10 of 68 sheets

WESTMINSTER
 SPUR LINE
 F 341-1(3)