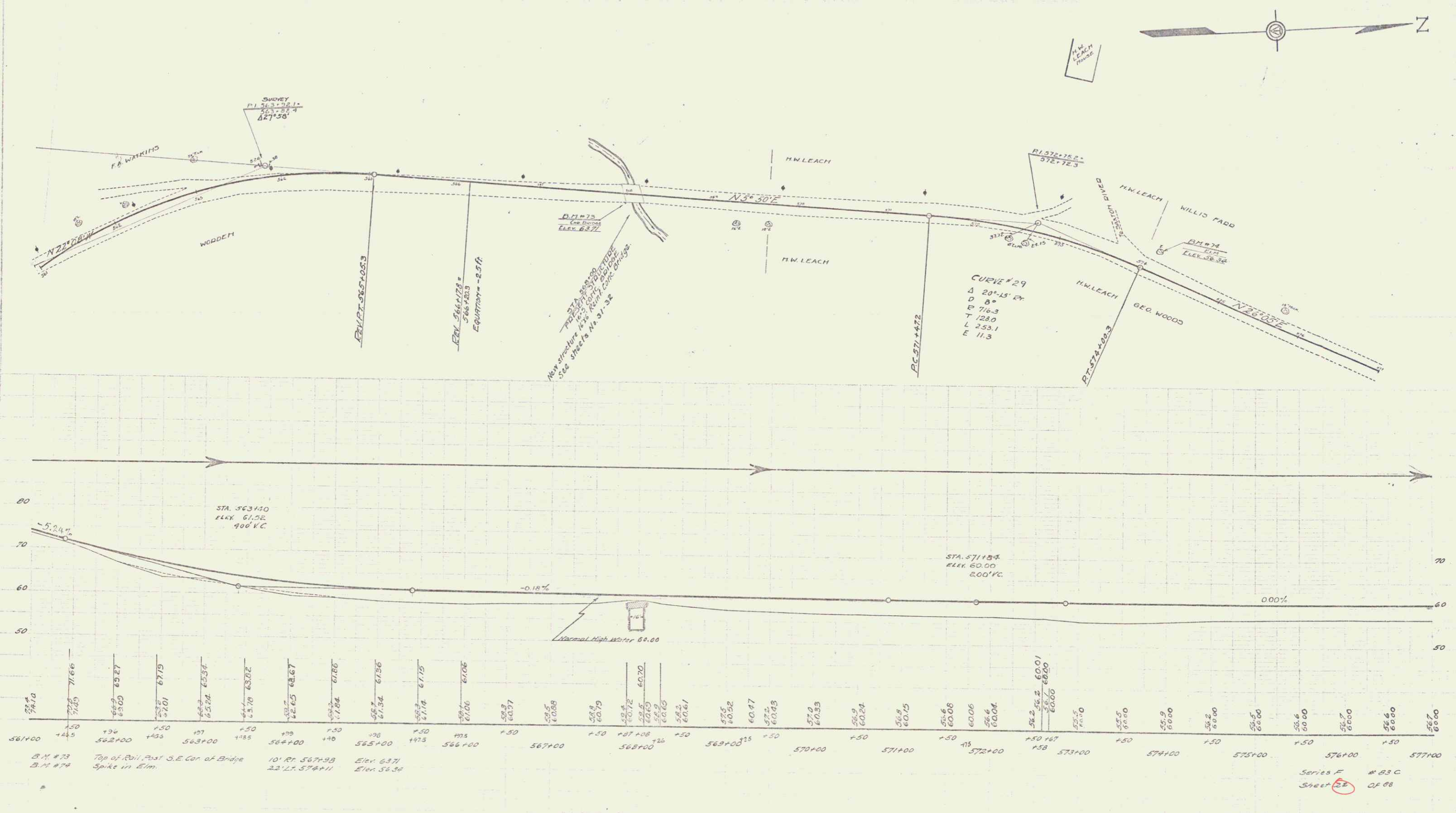


CABLE GUARD RAIL REQUIRED
 Stations 400 FT. 100 FT.
 56776-568140 64 64

STATE OF CALIFORNIA
 DEPARTMENT OF PUBLIC WORKS
 DIVISION OF HIGHWAYS
 PROJECT NO. 103-C 1923-22 88

Doc
 H. STEVENS
 1923
 11-28

Doc
 C. G. CHASE
 1923
 11-28



56140	56200	56300	56400	56500	56600	56700	56800	56900	57000	57100	57200	57300	57400	57500	57600	57700
74.0	71.86	69.87	67.9	65.86	63.82	61.78	59.74	57.7	55.66	53.62	51.58	49.54	47.5	45.46	43.42	41.38
56140	56200	56300	56400	56500	56600	56700	56800	56900	57000	57100	57200	57300	57400	57500	57600	57700
74.0	71.86	69.87	67.9	65.86	63.82	61.78	59.74	57.7	55.66	53.62	51.58	49.54	47.5	45.46	43.42	41.38

Series F # 83 C
 Sheet 21 of 88