

**WOOD GUARD RAIL REQUIRED**

Stations	Left	Right
553+61-553+85	24	24
558+38-558+62	24	24

**CABLE GUARD RAIL REQUIRED**

Stations	Left	Right
549+00-549+99	-	99

**NEW REINFC CONC PIPE CULVERTS REQUIRED**

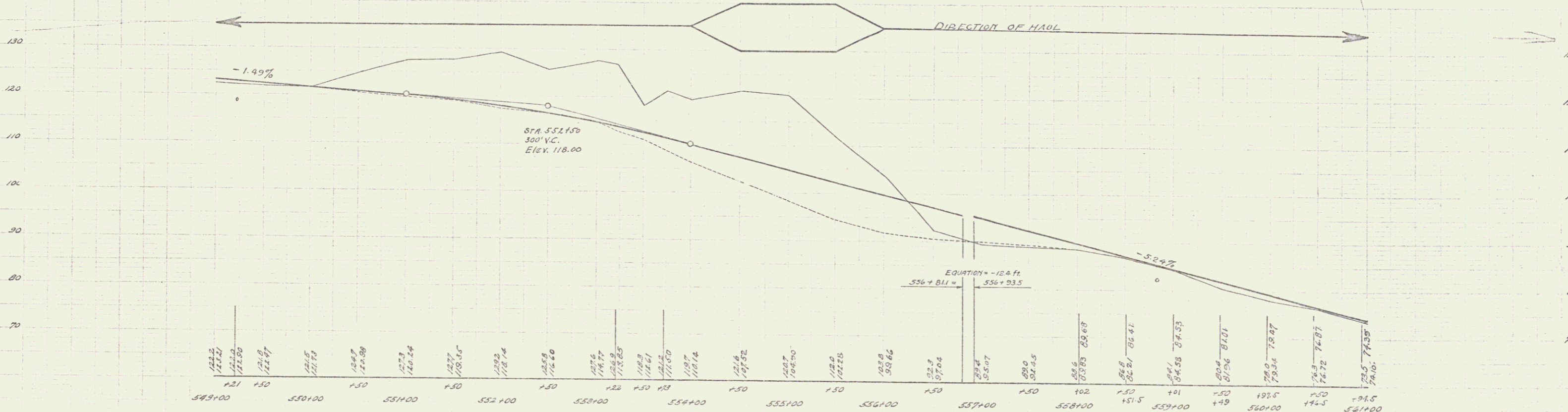
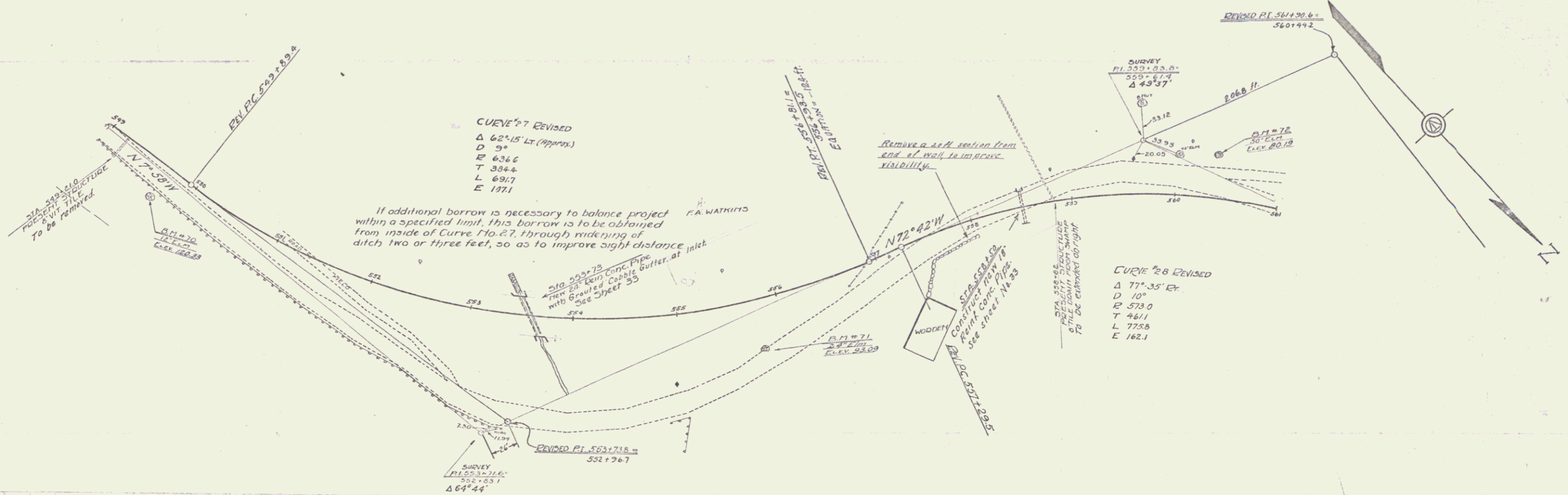
Station	Diam	Length	Conc. Pipe	Steel
553+75	24"	44'	23	54
558+50	18"	32'	18	15

**GROUPED COBBLE GUTTERS REQUIRED**

Station	Width	Length	Area
553+73	3 ft	15'	8.0

**CULVERT REPAIRS REQUIRED**  
 STA 550+82 20'lgth 8" V.I. clay pipe

83-C 1323 21 20



B.M. #70 Sp. in Trunk 10' Elm Elev. 120.33  
 B.M. #71 Sp. in Post 24' Elm Elev. 92.03  
 B.M. #72 Sp. in Post 50' Elm Elev. 80.13

Series F No. 83 C  
 Sheet 21 OF 88