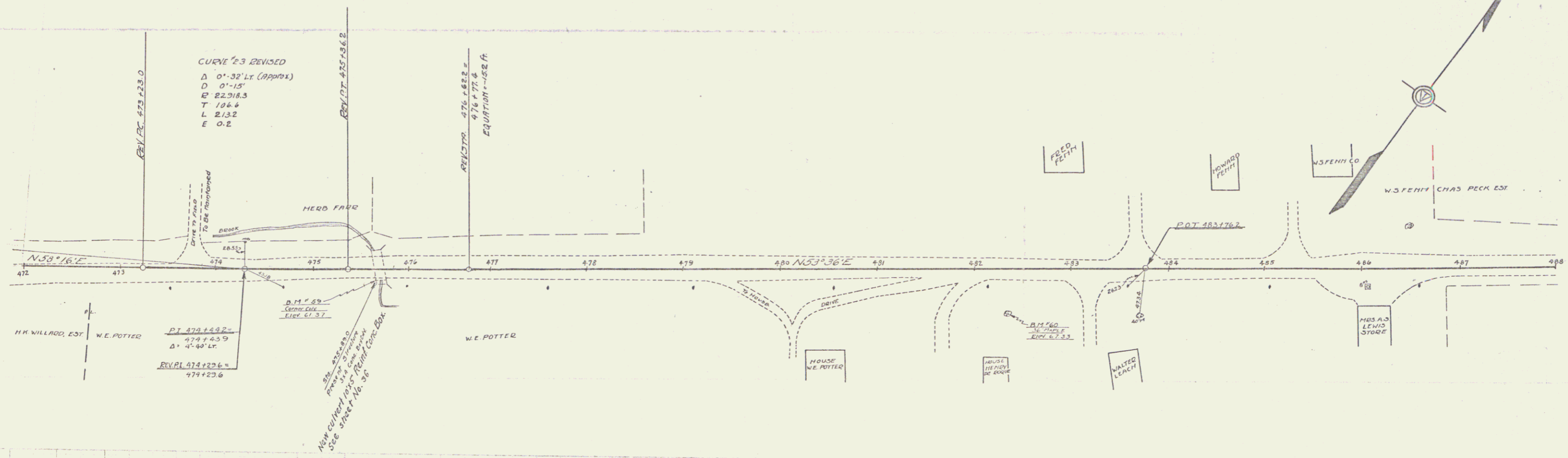


WOOD GUARD RAIL REQUIRED  
 Stations 475+17-476+01  
 Left Right 14

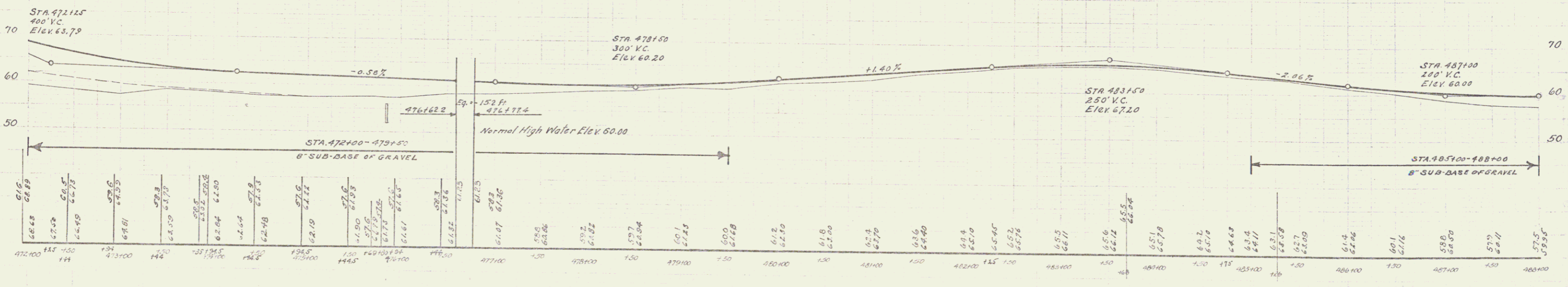
CABLE GUARD RAIL REQUIRED  
 Stations 471+00-475+97  
 Left Right 397

NEW REINFORCED CONCRETE BOX CULVERTS REQUIRED  
 Station Size 475+89 10'x8'  
 CURC & STEEL 204 9029

83-C 1029/16 88



STA 471+00-505+00  
 BORROW 9,051 CU YDS



BM #59 TOP S.E. POST CONC BRIDGE 13 FT DT STA 475+81 ~ ELEV 61.37  
 BM #60 SPIKE IN ROOT 36' MAPLE 45 FT DT STA 482+32 ~ ELEV 67.33

Series F 16 83-C  
 Sheet 16 of 88