

WOOD GUARD RAIL REQUIRED

Stations	LEFT	RIGHT
396+88-397+12	24	24
401+30-401+62	24	24

CABLE GUARD RAIL REQUIRED

Station	LEFT	RIGHT
396+00-397+12	112	112
403+54-406+60	304	304

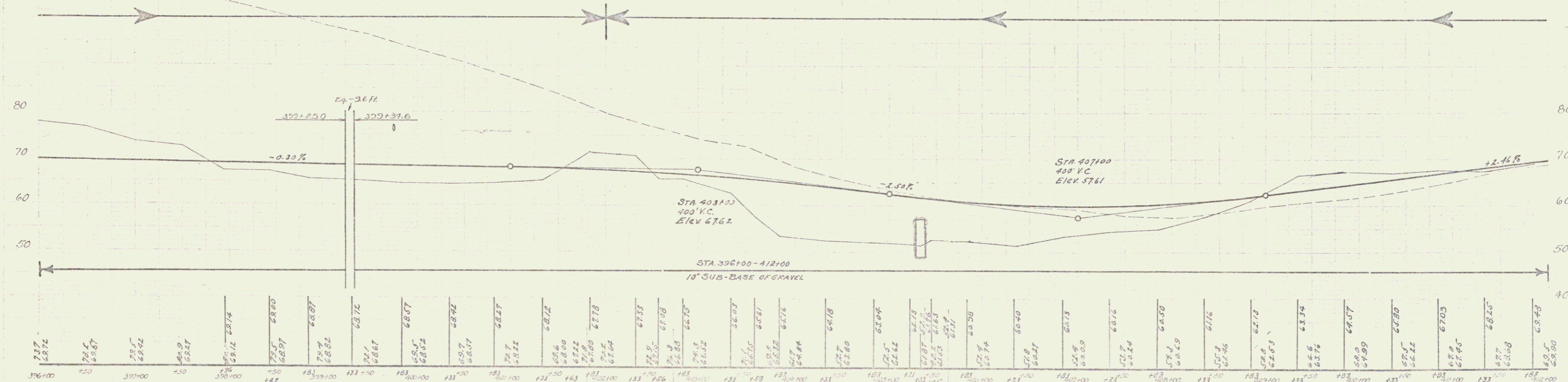
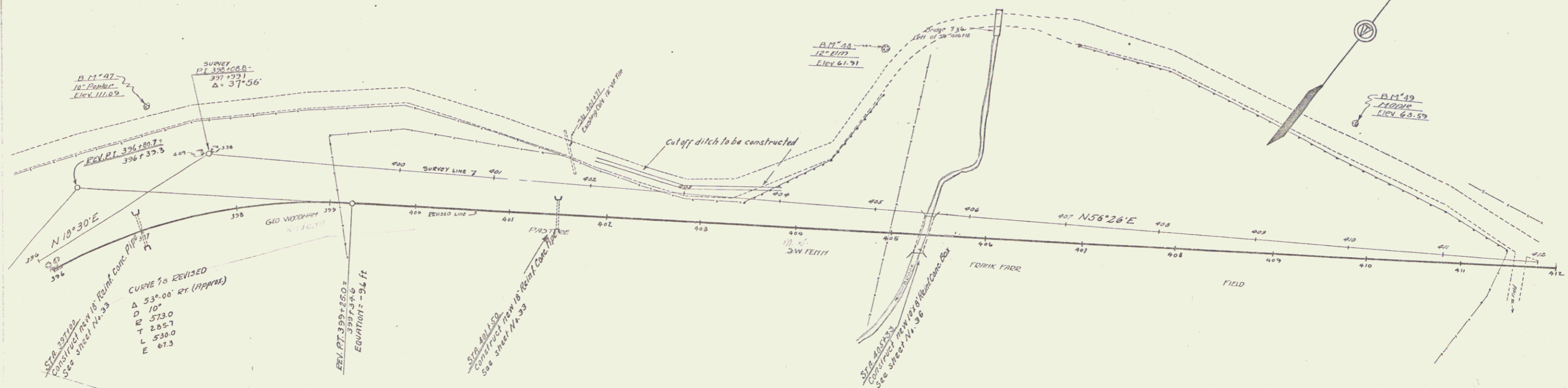
NEW REIN. CONC. PIPE CULVERTS REQUIRED

Station	Diam.	Len.	Conc. H.	Steel
397+00	18"	34'	18"	54'
401+50	18"	32'	18"	54'

NEW REIN. CONC. BOX CULVERTS REQUIRED

Station	Size	Conc. H.	Steel
405+53	10'x8'	111.4'	872.5'

83-C 1929 11 88



B.M. 47 - SPIKE IN TRUNK 10" PIPE, 84 FT. LT. OF STA 397+65 - ELEV. 111.09
 B.M. 48 - SPIKE IN FOOT OF 12" DIA., 166 FT. LT. OF STA 405+00 - ELEV. 61.91
 B.M. 49 - SPIKE IN FOOT OF 36" PIPE, 121 FT. LT. OF STA 409+98 - ELEV. 63.59

Series F 16 83 C
 Sheet 11 of 88