

WOOD GUARD RAIL REQUIRED

Stations	W.P.	W.P.
371.88-374.11	24	24
382.196-383.100	4	-

CABLE GUARD RAIL REQUIRED

Stations	W.P.	W.P.
370.18-370.76	48	48
375.140-378.124	-	288
377.17-378.125	88	-
382.196-383.100	-	4

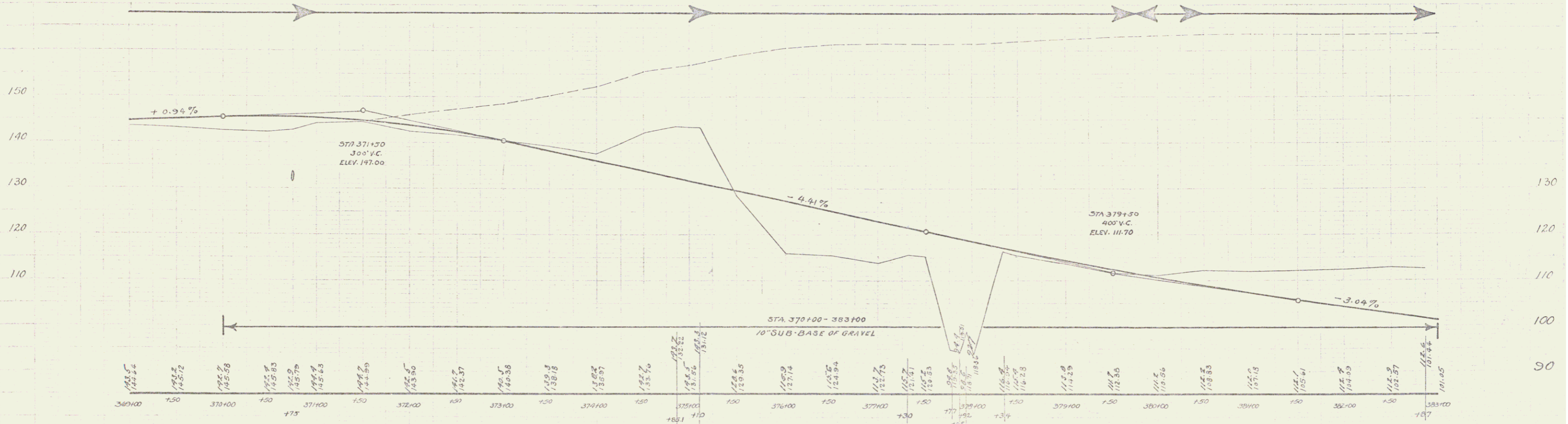
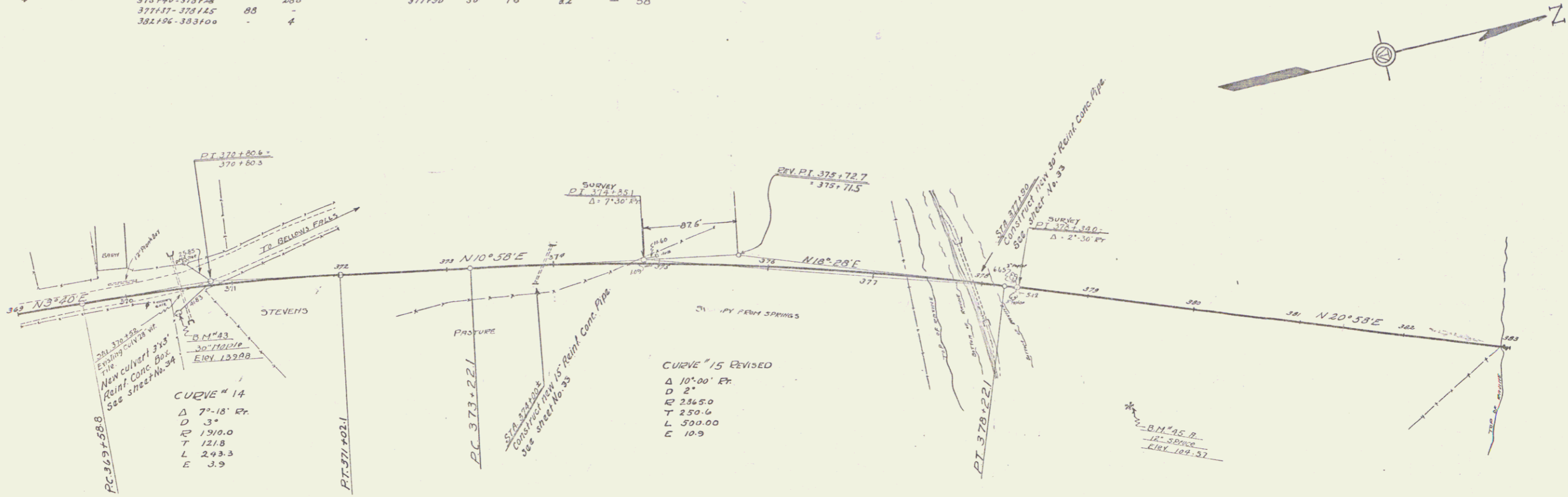
NEW REIN. CONC. PIPE CULVERTS REQUIRED

Station	Diam.	Long.	conc. H. (ft.)	Steel
374.100	15"	40'	3.3	33
377.130	30"	76'	8.2	58

NEW REIN. CONC. BOX CULVERTS REQUIRED

Station	Size	conc. H.	Steel
370.152	3'x3'	2.74	1834

83-C 1929 9 88



A.P.D. Co. Kambol 1925 1926 1928

A.P.D. Co. E. Pharrigan 1925 1926 1928

B.M. # 43 SPIKE IN ROOT 30" APPLE, 20 FT. RT. OF STA 370+46 - ELEV. 135.48
 B.M. # 45A SPIKE IN ROOT 12" SPURGE, 100 FT. RT. OF STA 379+50 - ELEV. 104.57

Series F No 83-C Sheet 9 of 88