

**WOOD GUARD RAIL REQUIRED**

Stations	LINE	MIN. FT.
309177-310101	4474	24
313185-314109	24	-
316124-316148	24	-

**CABLE GUARD RAIL REQUIRED**

Stations	LINE	MIN. FT.
312150-314174	224	-
316100-317144	144	-

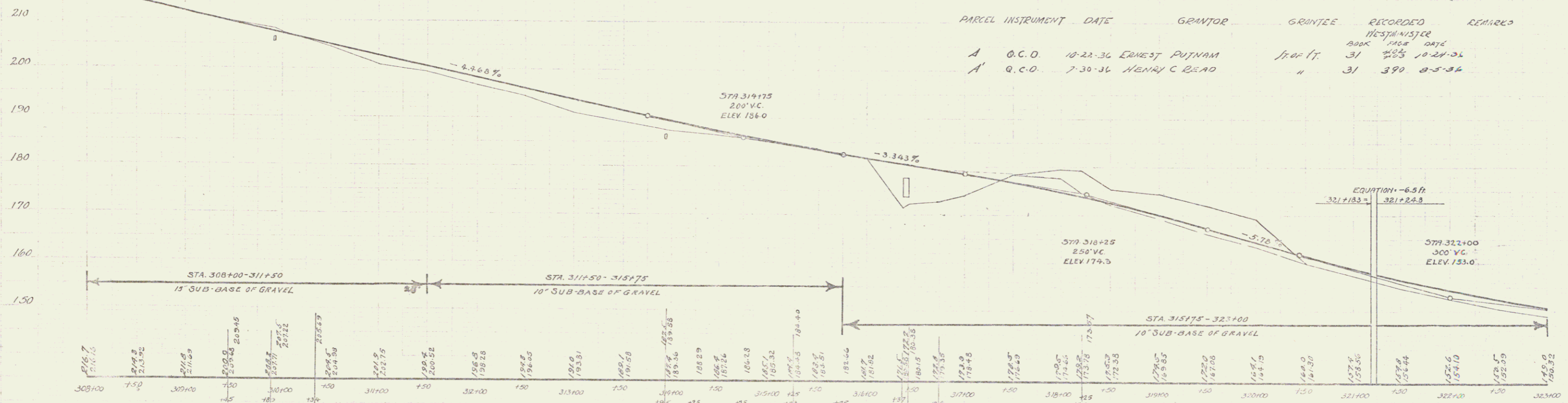
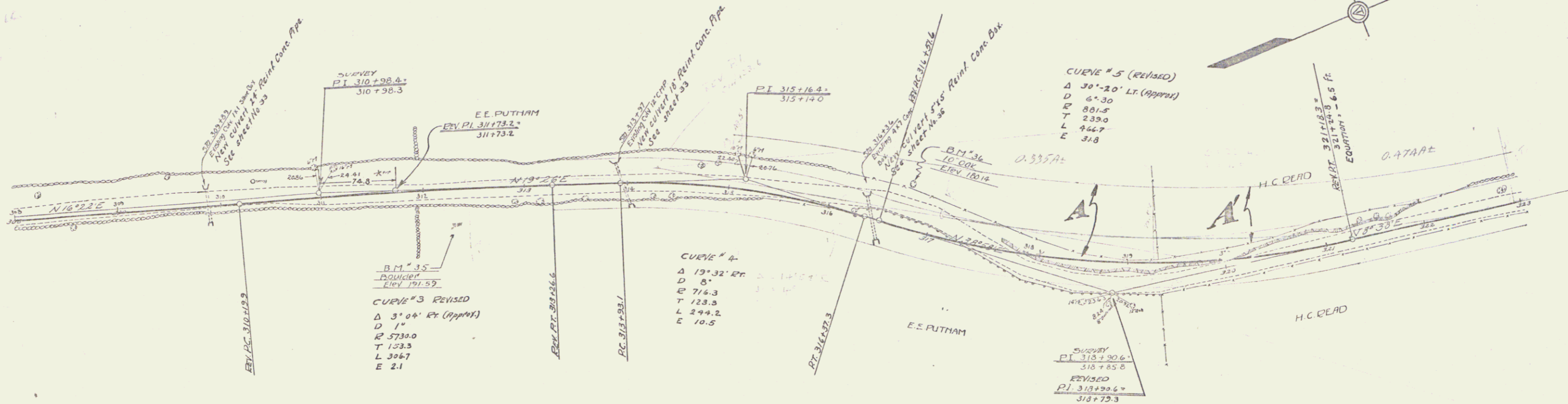
**NEW REINF CONC PIPE CULVERTS REQUIRED**

Station	Diam	Length	Conc. A.	Steel
309189	24"	32'	24	54
313197	18"	44'	18	54

**NEW REINF CONC BOX CULVERTS REQUIRED**

Station	Size	Conc. A.	Steel
316136	5'x5'	36.2	2077

80-C-1929-5-00



B.M. #35 - DRILL HOLE IN BOULDER, 34 FT. OF STA. 312+27 - ELEV. 191.59  
 B.M. #36 - SPIKE IN POST 10" DIA., 41 FT. LT. OF STA. 316+72 - ELEV. 180.14

Series F 1033C  
 511091 ① OF 08