

INDEX OF SHEETS

SHEET NO.	TITLE PAGE
2	TYPICAL CROSS-SECTION OF IMPROVEMENT (CONCRETE)
3	PLAN AND PROFILE STA. 0+00 TO STA. 15+00
4	15+00 - 31+00
5	31+00 - 47+00
6	47+00 - 62+00
7	62+00 - 77+00
8	77+00 - 91+00
9	91+00 - 105+00
10	105+00 - 121+00
11	121+00 - 134+00
12	134+00 - 146+00
13	146+00 - 161+00
14	161+00 - 176+00
15	176+00 - 190+00
16	190+00 - 206+00
17	206+00 - 222+00
18	222+00 - 237+00
19	237+00 - 253+00
20	253+00 - 269+00
21	269+00 - 285+00
22	285+00 - 295+25
23	
24	BRIDGE SHEETS
25	
26	
27 TO 13	CROSS SECTIONS
14-15-16	STANDARD STRUCTURE SHEETS, Nos 17-18-19

STATE OF VERMONT
STATE HIGHWAY DEPARTMENT

PLAN AND PROFILE OF PROPOSED
STATE HIGHWAY

FEDERAL AID PROJECT

BRATTLEBORO-BELLOWS FALLS ROAD

IN TOWNS OF

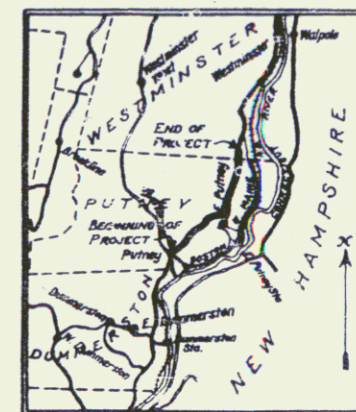
PUTNEY AND WESTMINSTER

BEGINNING AT SACKETT'S BROOK BRIDGE IN PUTNEY VILLAGE
EXTENDING NORTHERLY TO A POINT 4,245 FEET NORTHERLY OF
PUTNEY-WESTMINSTER TOWN LINE

LENGTH OF PROJECT 28,461 FEET 5.579 MILES

PLAN - 1 INCH = 50 FEET
PROFILE - 1 INCH = 50 FEET
VERT. - 1 INCH = 10 FEET
CROSS SECTIONS - 1 INCH = 5 FEET

FED. ROAD DIST. NO.	ROUTE	PROJECT NO.	FISCAL YEAR	DATE	LENGTH
9	VT.	83B	1928	1	76

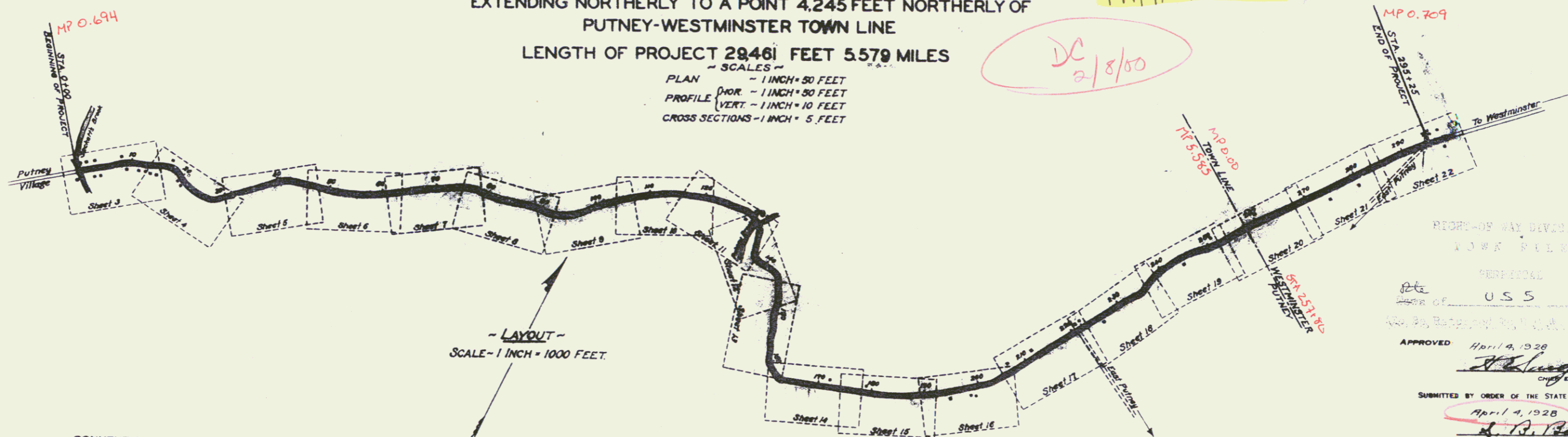


Route: US 5

Project: F83B

Pin# 59R372

DC 2/8/00



- LAYOUT -
SCALE - 1 INCH = 1000 FEET.

CONVENTIONAL SIGNS

COUNTY LINE	GROUND ELEVATION	DATE	LINE
TOWN LINE	GRADE ELEVATION	DATE	LINE
FENCE LINE			
STONE WALL			
UNFENCED PROPERTY			
HARD RAIL			
RAVELED WAY			
RAILROAD			
RETAINING WALL			
CENTER LINE			
DRIVE LINE			
VERT			
DROPPINLET			
ROLLY POLE			
PG WER POLE			
TELEPHONE POLE			
TREES			
HEDGE			

This project to be constructed in accordance with Standard Specifications on file with the U.S. Bureau of Public Roads as approved July 7, 1926

Structures on this project to be constructed in accordance with details given on Standard Structure Sheets, Series S, Nos 17, 18 and 19.

THESE PLANS SUBJECT TO SUCH REVISIONS AS MAY BE REQUIRED BY THE BUREAU OF PUBLIC ROADS OR THE CHIEF ENGINEER

REPORT OF WAY DIVISION
LOWE PEEK
FEDERAL
ROAD OF
U.S.S.
APPROVED April 9, 1928
Submitted by ORDER OF THE STATE HIGHWAY BOARD
April 9, 1928

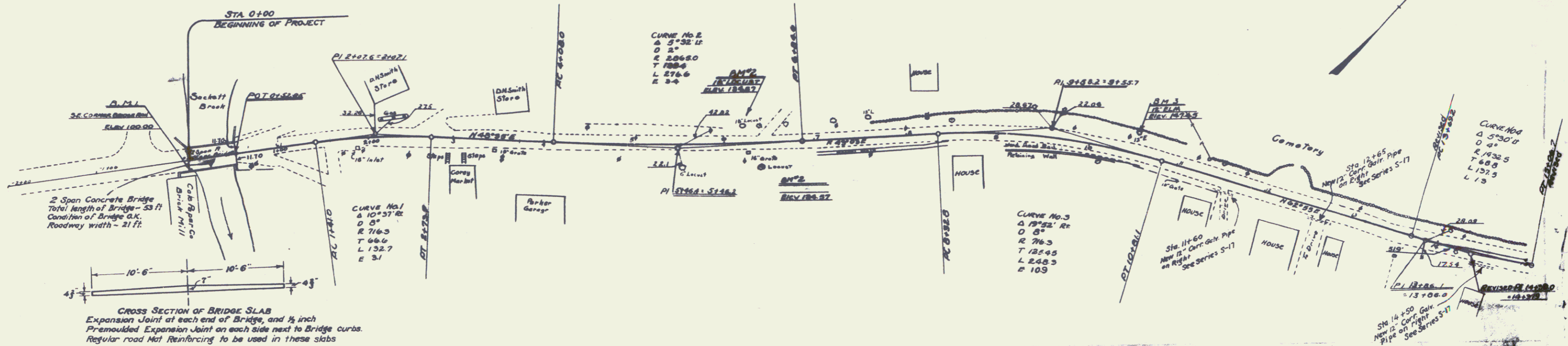
RECOMMENDED
DISTRICT ENGINEER BUREAU OF PUBLIC ROADS
RECOMMENDED FOR APPROVAL
CHIEF ENGINEER BUREAU OF PUBLIC ROADS
APPROVED
DIRECTOR BUREAU OF PUBLIC ROADS

SERIES F. No. 83B FILED

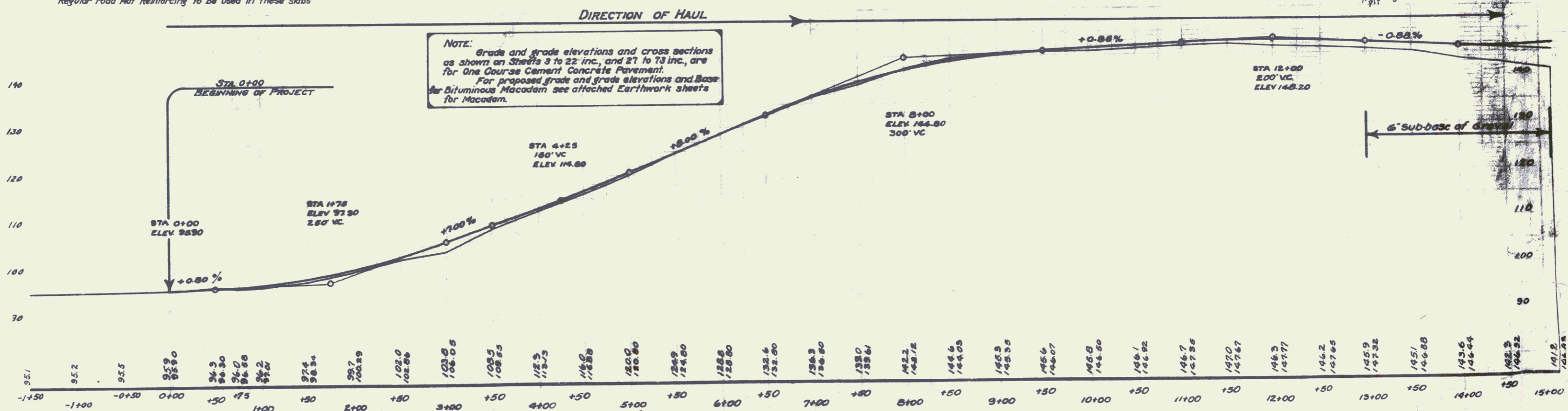
CABLE GUARD RAIL REQUIRED
 ON RIGHT
 Sta. 14+50 to Sta. 15+00 Length 50 Ft.
 ON LEFT
 Sta. 14+50 to Sta. 15+00 Length 50 Ft.

DRIVEWAY CULVERTS REQUIRED
 Sta. 11+00 Right, 12" Corr. Galv. Metal Pipe 18 lin. ft.
 Concrete Class B (1-2 1/2-5) 1 cu. yd.
 Sta. 12+65 Right, 12" Corr. Galv. Metal Pipe 18 lin. ft.
 Concrete Class B (1-2 1/2-5) 1 cu. yd.
 Sta. 14+50 Right, 12" Corr. Galv. Metal Pipe 18 lin. ft.
 Concrete Class B (1-2 1/2-5) 1 cu. yd.

83-0 1920 3 76



CROSS SECTION OF BRIDGE SLAB
 Expansion Joint at each end of Bridge, and 1/2 inch
 Premoulded Expansion Joint on each side next to Bridge curbs.
 Regular road Mat Reinforcing to be used in these slabs



BM^{#1} ON S.E. CORNER OF BRIDGE RAIL ELEV 100'
 BM^{#2} SPIKE IN LOCUST TREE ON RT. STA 6+46 ELEV 134.57'
 BM^{#3} SPIKE IN 12' ELM ON LT. STA 10+50 ELEV 147.45'

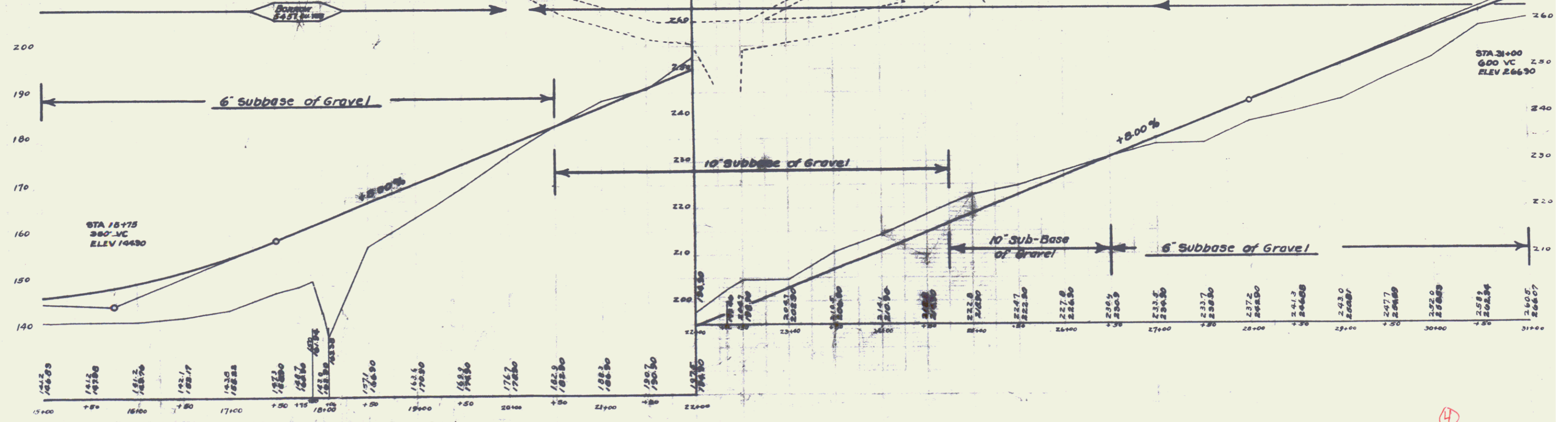
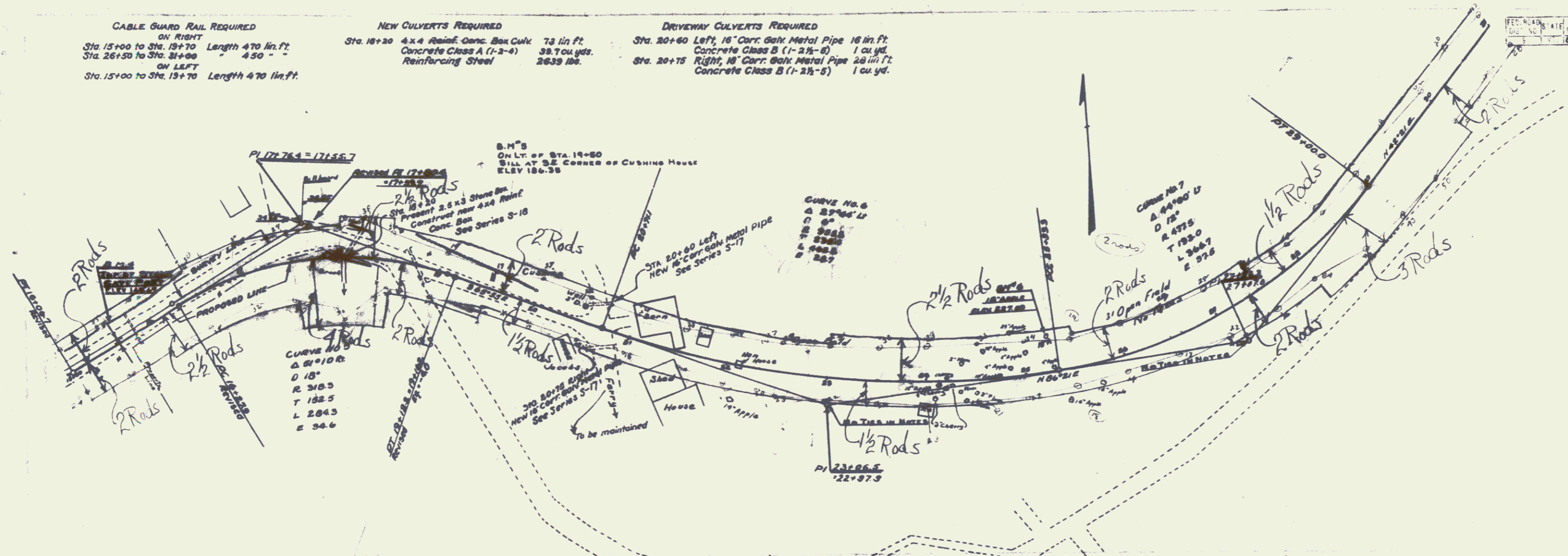
3
 2

CABLE GUARD RAIL REQUIRED
 ON RIGHT
 Sta. 15+00 to Sta. 18+70 Length 470 lin. ft.
 Sta. 26+50 to Sta. 31+00 Length 450 " "
 ON LEFT
 Sta. 15+00 to Sta. 19+70 Length 470 lin. ft.

NEW CULVERTS REQUIRED
 Sta. 18+20 4x4 Rainf. Conc. Box Culv. 73 lin. ft.
 Concrete Class A (1-2-4) 39.7 cu. yds.
 Reinforcing Steel 2639 lbs.

DRIVEWAY CULVERTS REQUIRED
 Sta. 20+60 Left, 18" Corr. Galv. Metal Pipe 16 lin. ft.
 Concrete Class B (1-2 1/2-5) 1 cu. yd.
 Sta. 20+75 Right, 18" Corr. Galv. Metal Pipe 26 lin. ft.
 Concrete Class B (1-2 1/2-5) 1 cu. yd.

PROJECT NO.	DATE	SCALE	SHEET NO.	TOTAL SHEETS
85-6	1928	4	76	



B.M. 4 TOP OF STONE GATE PAST LEFT OF STA. 15+60 ELEV. 143.67'
 B.M. 5 SILL AT S.E. CORNER OF CUSHING HOUSE ON LT. OF STA. 17+50 ELEV. 186.35'
 B.M. 6 SPIKE IN 18\"/>

(4)

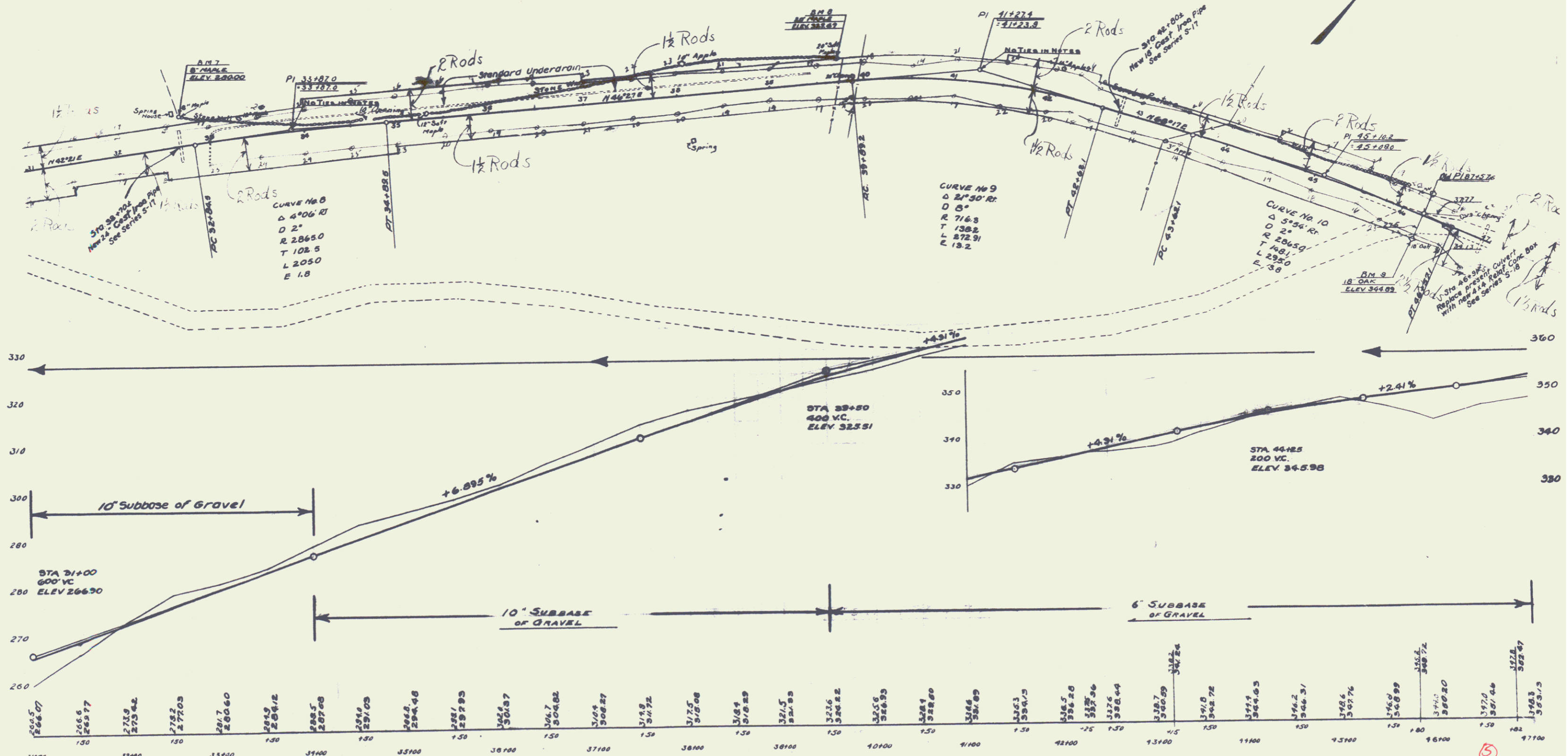
3

CABLE GUARD RAIL REQUIRED
 ON RIGHT
 Sta. 31+00 to Sta. 31+70 70 lin. ft.
 " 45+70 to " 47+00 130 "
 ON LEFT
 Sta. 45+70 to Sta. 47+00 130 lin. ft.

WOOD GUARD RAIL REQUIRED
 ON RIGHT
 Sta. 32+58 to Sta. 32+82 24 lin. ft.
 " 42+68 " " 42+92 24 "
 ON LEFT
 Sta. 32+58 to Sta. 32+82 24 lin. ft.
 " 42+68 " " 42+92 24 "

NEW CULVERTS REQUIRED
 Sta. 32+70±, 24" Cast Iron Pipe Culv. 40 lin. ft.
 Concrete Class A (1-2-4) 2.6 cu. yds.
 Reinforcing Steel 54 lbs.
 Sta. 42+80±, 18" Cast Iron Pipe Culv. 36 lin. ft.
 Concrete Class B (1-2 1/2-8) 3.1 cu. yds.
 Reinforcing Steel 33 lbs.
 Sta. 46+91 4x4 Reinf. Conc. Box Culv. 54 lin. ft.
 Concrete Class A (1-2-4) 31 cu. yds.
 Reinforcing Steel 2040 lbs.

STANDARD UNDERDRAIN REQUIRED (Series S-18)
 Sta. 33+00 to Sta. 39+50 (on left of &) 650 ft.
 " 33+00 from left to across road 35 "
 Total 685 ft.

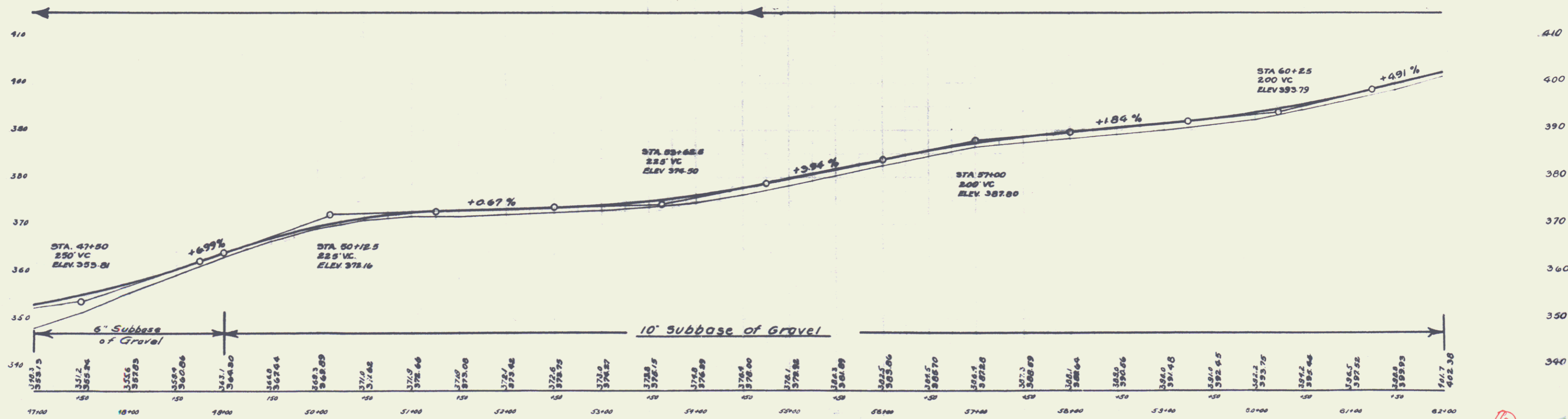
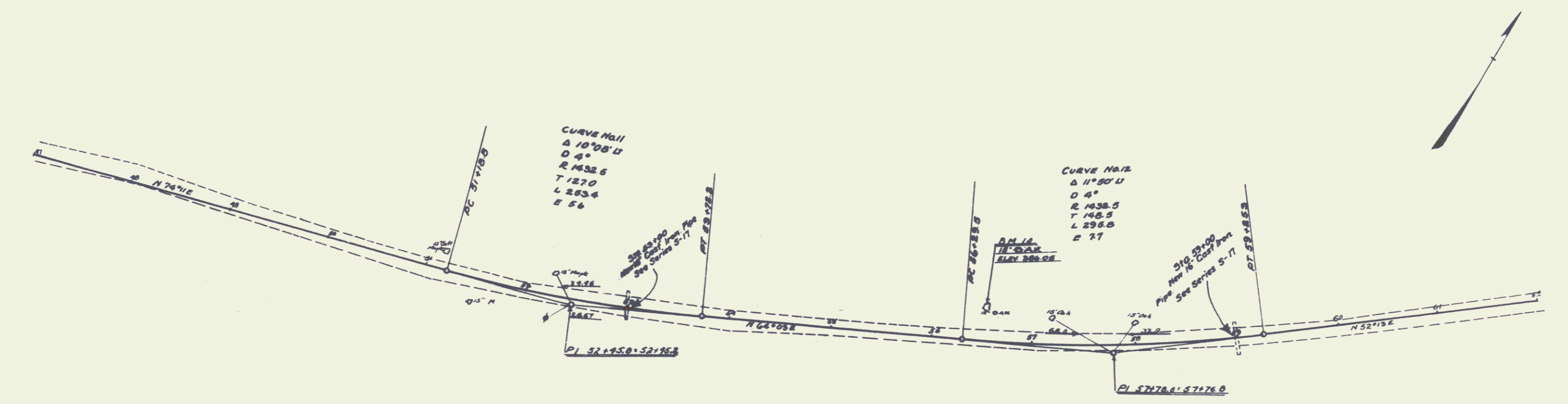


B.M.#7 SPIKE IN 8" MAPLE ON LT. OF STA. 32+75 ELEV. 280.00'
 B.M.#8 SPIKE IN 20" MAPLE ON LT. OF STA. 39+15 ELEV. 327.47'
 B.M.#9 SPIKE IN 18" OAK ON RT. OF STA. 46+20 ELEV. 344.84'

WOOD GUARD RAIL REQUIRED
 ON RIGHT
 Sta. 52+00 to Sta. 53+12 24 lin. ft.
 " 58+00 " " 59+12 24 " "
 ON LEFT
 Sta. 52+00 to Sta. 53+12 24 lin. ft.
 " 58+00 " " 59+12 24 " "

CABLE GUARD RAIL REQUIRED
 ON RIGHT
 Sta. 47+00 to Sta. 47+54 54 lin. ft.
 ON LEFT
 Sta. 47+00 to Sta. 47+54 54 lin. ft.

NEW CULVERTS REQUIRED
 Sta. 53+00 18" Cast. Iron Pipe Culv. 34 lin. ft.
 Conc. Class B (1-2 1/2-5) 3.1 cu. yds.
 Reinforcing Steel 33 lbs.
 Sta. 59+00 18" Cast. Iron Pipe Culv. 34 lin. ft.
 Conc. Class B (1-2 1/2-5) 2.7 cu. yds.
 Reinforcing Steel 33 lbs.



B.M. #10 SPIKE IN 15' OAK ON LT. STA. 56+50 ELEV. 386.05'

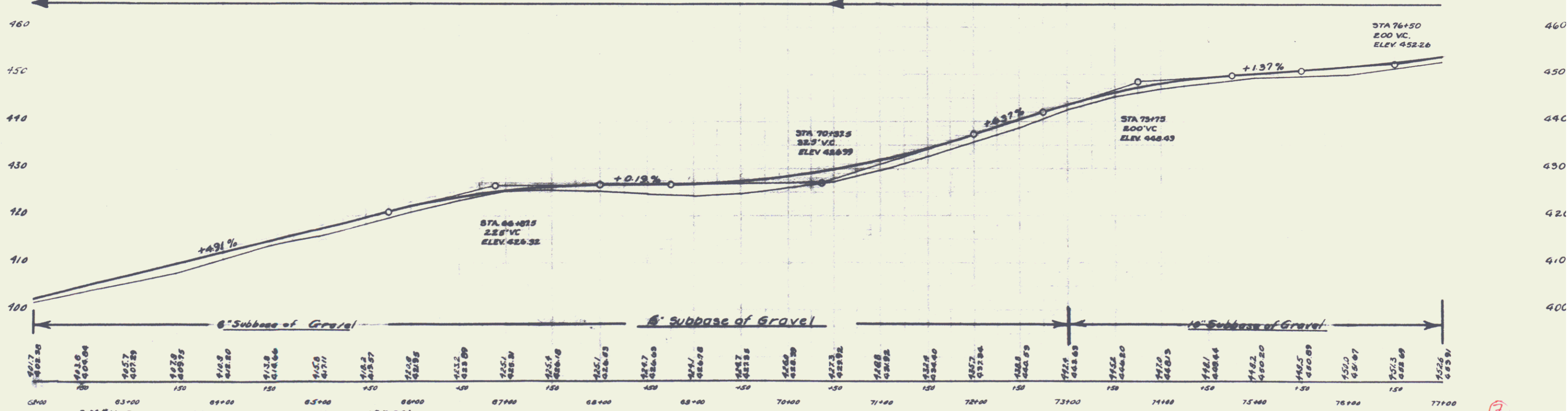
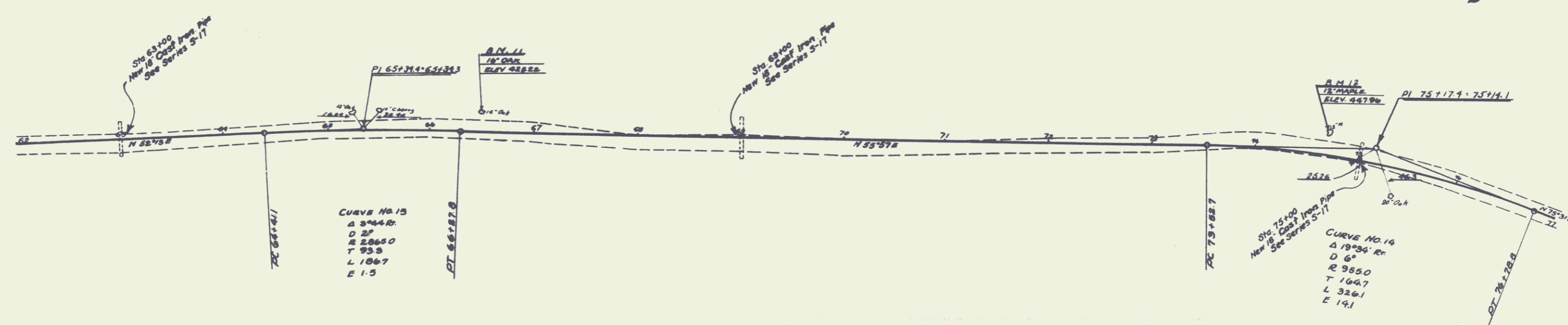
6
5

WOOD GUARD RAIL REQUIRED
 ON RIGHT
 Sta. 62+00 to Sta. 63+12 24 in. ft.
 " 68+00 " " 69+12 24 in. ft.
 " 74+04 " " 75+16 32 " "
 ON LEFT
 Sta. 62+00 to Sta. 63+12 24 in. ft.
 " 74+00 " " 75+12 24 " "

CABLE GUARD RAIL REQUIRED
 ON LEFT
 Sta. 67+75 to Sta. 69+75 200 in. ft.

NEW CULVERTS REQUIRED
 Sta. 63+00, 18" Cast Iron Pipe Culv. 34 in. ft.
 Conc. Class B (1-2 1/2-5) 3.1 cu. yds.
 Reinforcing Steel 33 lbs.
 Sta. 69+00, 18" Cast Iron Pipe Culv. 40 in. ft.
 Conc. Class B (1-2 1/2-5) 3.1 cu. yds.
 Reinforcing Steel 33 lbs.
 Sta. 75+00, 16" Cast Iron Pipe Culv. 36 in. ft.
 Conc. Class B (1-2 1/2-5) 2.7 cu. yds.
 Reinforcing Steel 33 lbs.

FED. ROAD DIST. NO.	STATE	PROJ. NO.	YEAR	SCALE	SHEET NO.	TOTAL SHEETS
		88-8	1928		7	76



B.M. #11 SPIKE IN 18" OAK ON LT. STA. 66+45 ELEV. 425.22'
 B.M. #12 SPIKE IN 12" MAPLE ON LT. STA. 74+65 ELEV. 447.96'

7

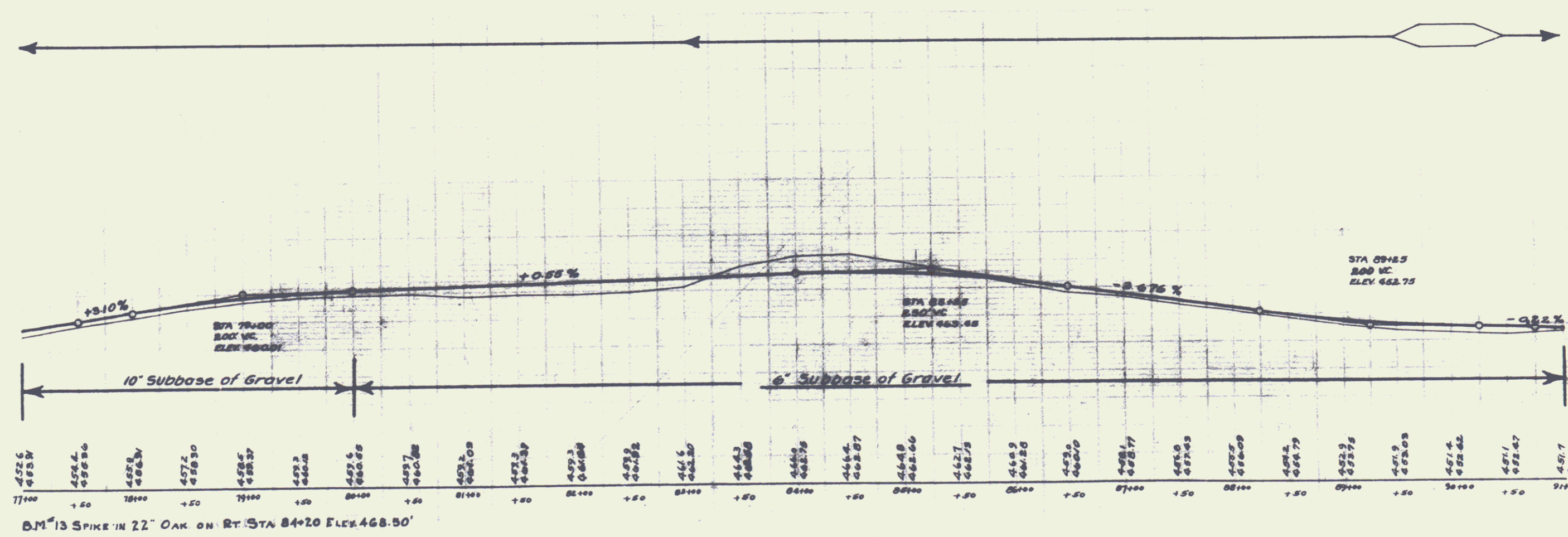
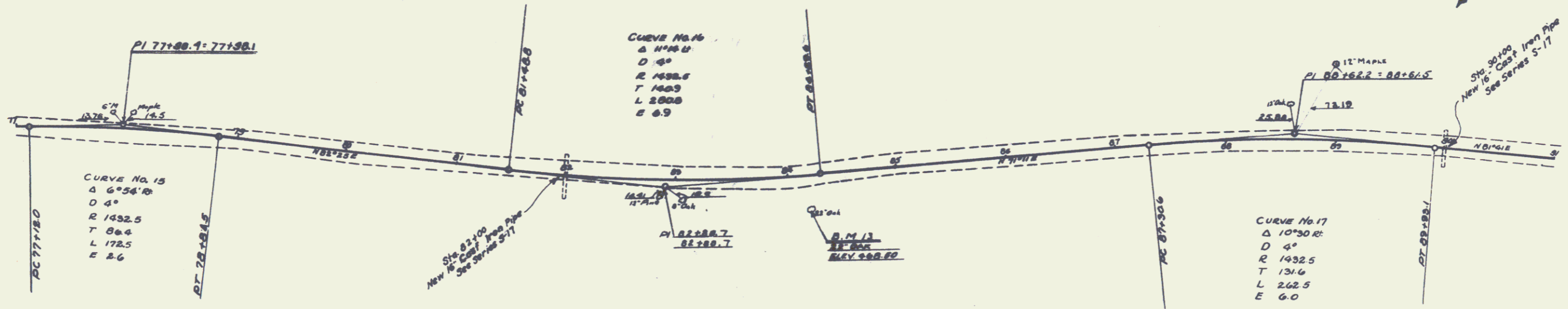
6

WOOD GUARD RAIL REQUIRED
 ON RIGHT
 Sta. 89+88 to Sta. 90+12 24 lin. ft.
 ON LEFT
 Sta. 81+88 to Sta. 82+12 24 lin. ft.
 - 89+88 - 90+12 24 - -

CABLE GUARD RAIL REQUIRED
 ON RIGHT
 Sta. 81+25 to Sta. 82+21 96 lin. ft.

NEW CULVERTS REQUIRED
 Sta. 88+88 18" Cast Iron Pipe Culv. 40 lin. ft.
 Conc. Class B (1-2 1/2 - 5) 2.7 cu yds.
 Reinforcing Steel 33 lbs.
 Sta. 90+00 18" Cast Iron Pipe Culv. 34 lin. ft.
 Conc. Class B (1-2 1/2 - 5) 2.7 cu yds.
 Reinforcing Steel 33 lbs.

US. No. 100
 DATE 1958
 YEAR 80
 SHEET 70



B.M. 13 SPIKE IN 22" OAK ON RT. STA. 84+20 ELEV. 468.50'

8

7

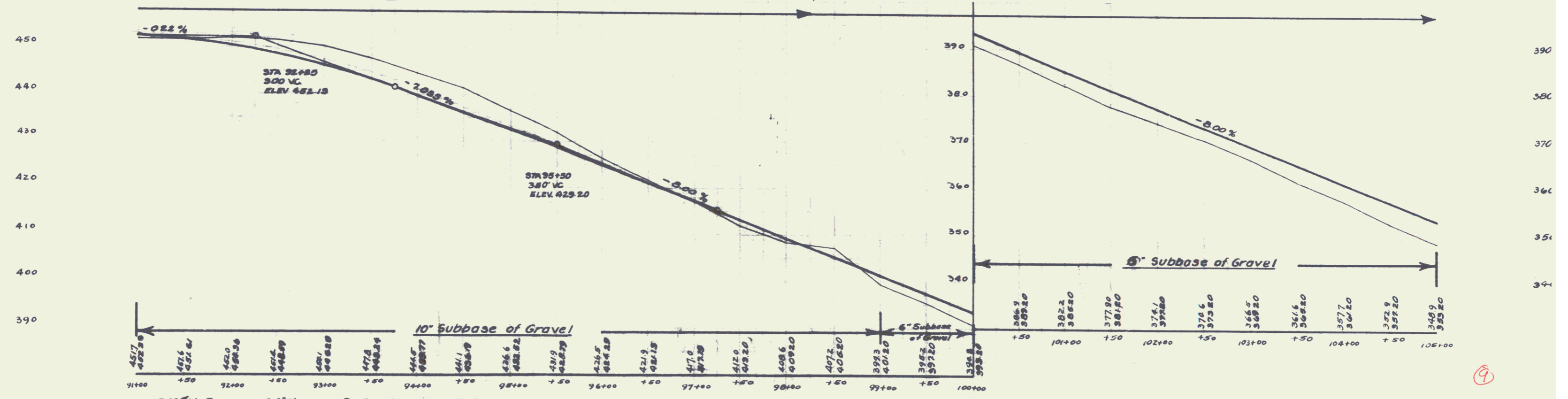
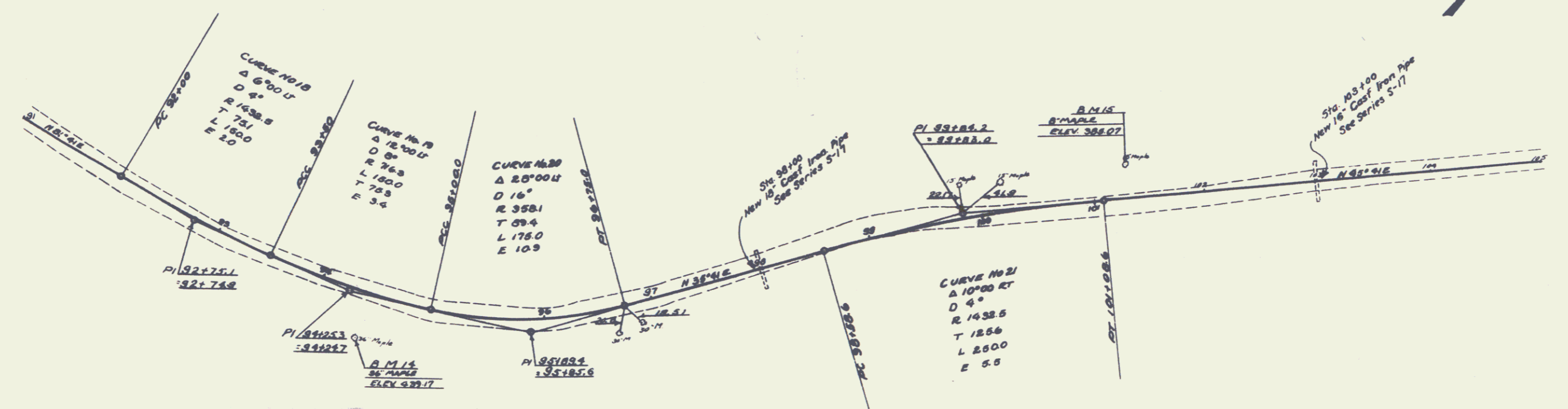
WOOD GUARD RAIL REQUIRED
 ON LEFT
 Sta. 102+00 to Sta. 103+12 24 lin. ft.
 " 37+00 " " 98+12 24 " "
 ON RIGHT
 Sta. 102+00 to Sta. 103+12 24 lin. ft.
 " 37+00 " " 98+12 24 " "

CABLE GUARD RAIL REQUIRED
 ON RIGHT
 Sta. 102+00 to Sta. 105+00 220 lin. ft.

NEW CULVERTS REQUIRED
 Sta. 98+00 18" Coef. Iron Pipe Culv. 34 lin. ft.
 Conc. Class B (1-2 1/2-5) 3.1 cu. yds.
 Reinforcing Steel 33 lbs.
 Sta. 103+00 18" Coef. Iron Pipe Culv. 36 lin. ft.
 Conc. Class B (1-2 1/2-5) 2.7 cu. yds.
 Reinforcing Steel 33 lbs.

J.F.M. 8-20

J.F.M. 3-20



B.M. 14 SPIKE IN 36" MAPLE ON RT STA 94+40 ELEV. 439.17'
 B.M. 15 SPIKE IN 8" MAPLE ON LT STA 101+25 ELEV. 388.07'

9

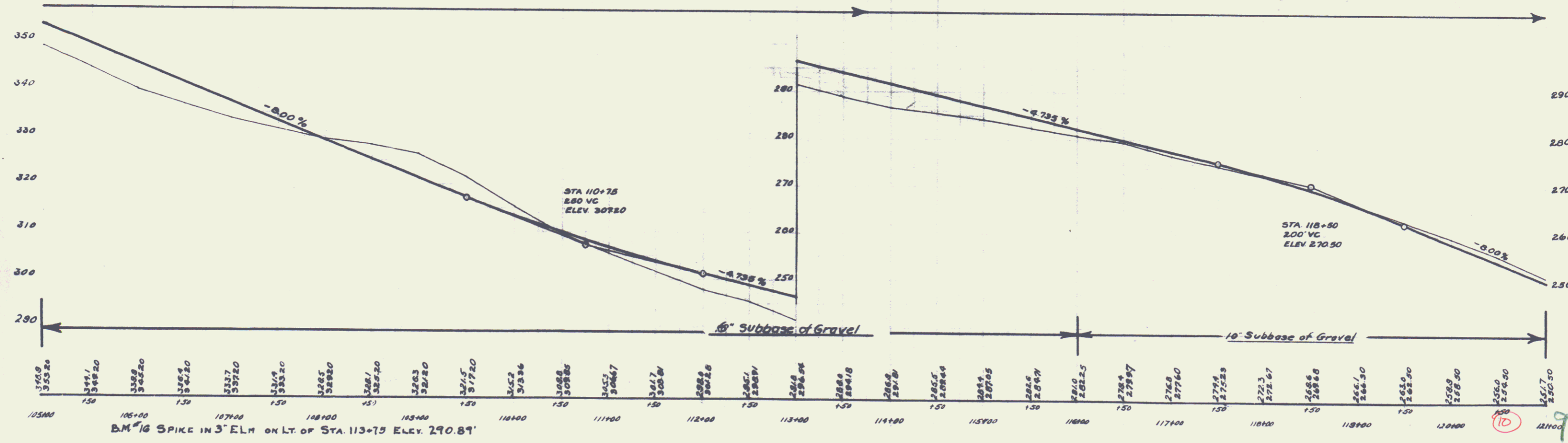
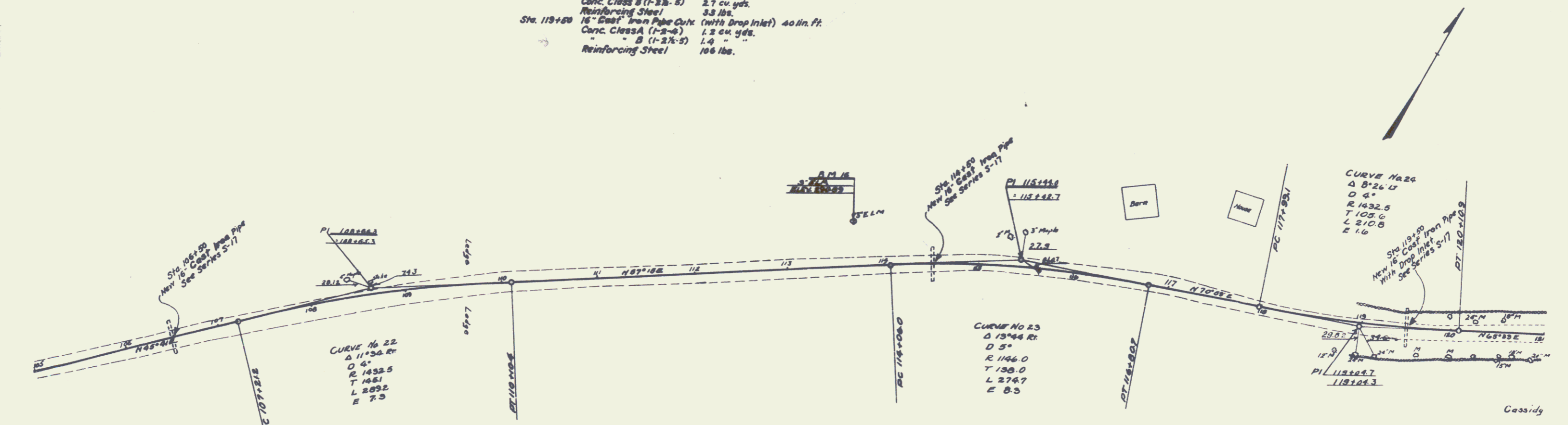
8

WOOD GUARD RAIL REQUIRED
 ON LEFT
 Sta. 106+38 to Sta. 106+62 24 lin. ft.
 118+82 " 119+82 80 " "
 ON RIGHT
 Sta. 113+38 to Sta. 113+62 24 lin. ft.

CABLE GUARD RAIL REQUIRED
 ON LEFT
 Sta. 113+26 to Sta. 114+62 136 lin. ft.
 ON RIGHT
 Sta. 105+00 to Sta. 106+62 164 lin. ft.
 " 112+75 " 114+75 200 " "

NEW CULVERTS REQUIRED
 Sta. 106+50 16" Cast Iron Pipe Culv. 36 lin. ft.
 Conc. Class B (1-2 1/2-5) 2.7 cu. yds.
 Reinforcing Steel 33 lbs.
 Sta. 114+50 16" Cast Iron Pipe Culv. 36 lin. ft.
 Conc. Class B (1-2 1/2-5) 2.7 cu. yds.
 Reinforcing Steel 33 lbs.
 Sta. 119+50 16" Cast Iron Pipe Culv. (with Drop Inlet) 40 lin. ft.
 Conc. Class A (1-2-8) 1.3 cu. yds.
 " B (1-2 1/2-5) 1.4 " "
 Reinforcing Steel 106 lbs.

STATE 2004 1504 SHEET NO. 10
 PROJ. NO. 85-8 YEAR 1988

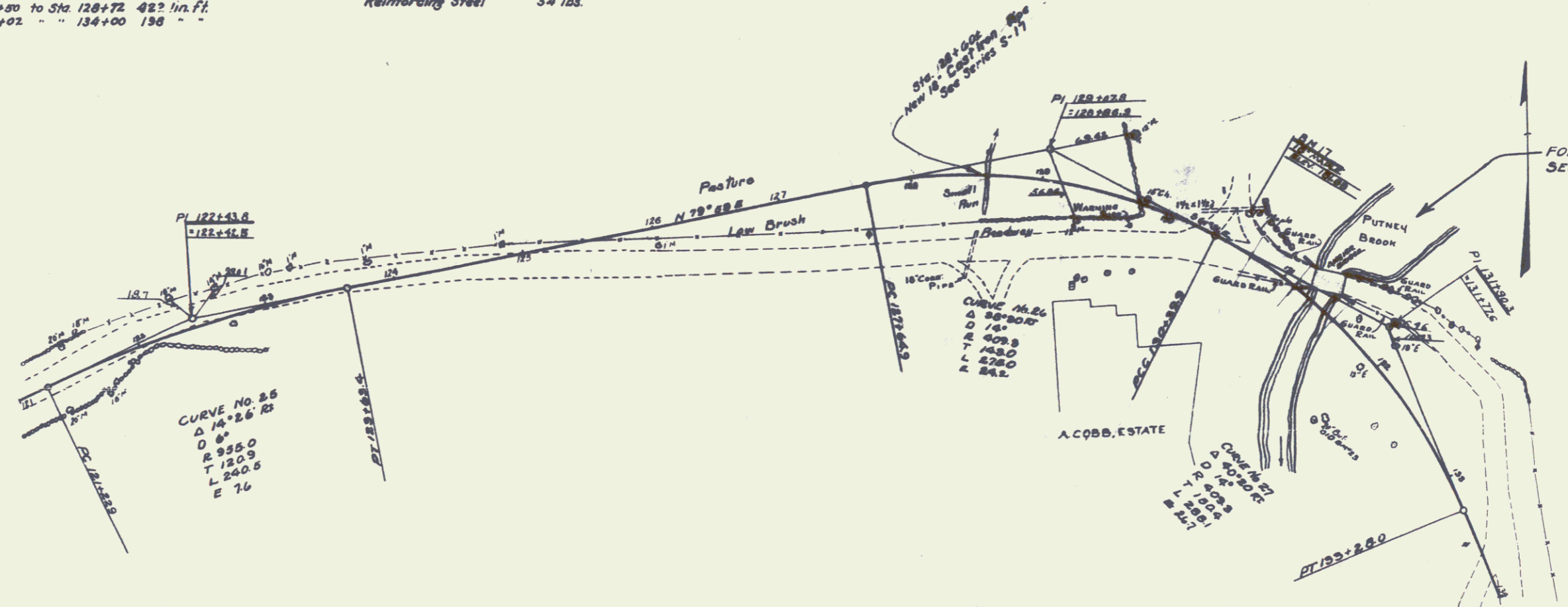


WOOD GUARD RAIL REQUIRED
ON RIGHT
Sta. 129+98 to Sta. 130+50 60 lin. ft.
" 128+48 " " 128+72 24 " "
ON LEFT
Sta. 129+00 to Sta. 130+50 72 lin. ft.

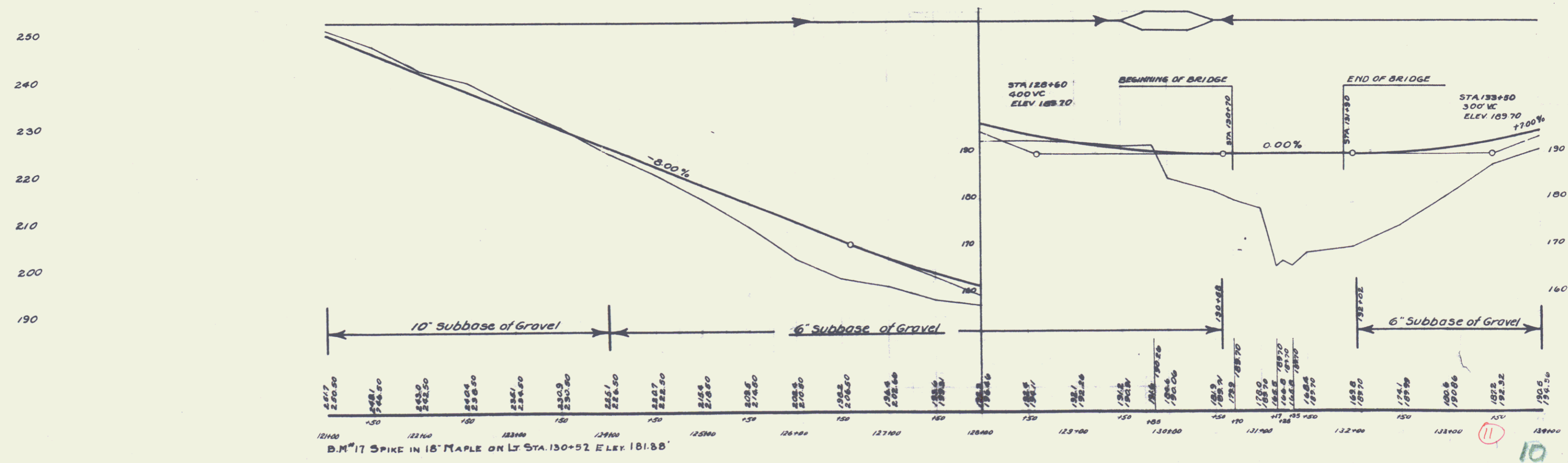
CABLE GUARD RAIL REQUIRED
ON RIGHT
Sta. 132+02 to Sta. 134+00 198 lin. ft.
ON LEFT
Sta. 129+50 to Sta. 128+72 422 lin. ft.
" 132+02 " " 134+00 198 " "

NEW CULVERTS REQUIRED
Sta. 128+80 ± 18" Cast Iron Pipe Cvt. 36 lin. ft.
Conc. Class A (1-2-4) 13 cu. yds
Reinforcing Steel 54 lbs.

FED. ROAD DIST. NO.	STATE	FED. AID PROJ. NO.	FISCAL YEAR	SHEET NO.	TO SHEET
1-1	VT.	85-3	1968	17	18



FOR DETAIL OF BRIDGE
SEE SHEETS NO. 23, 24, 25, 26

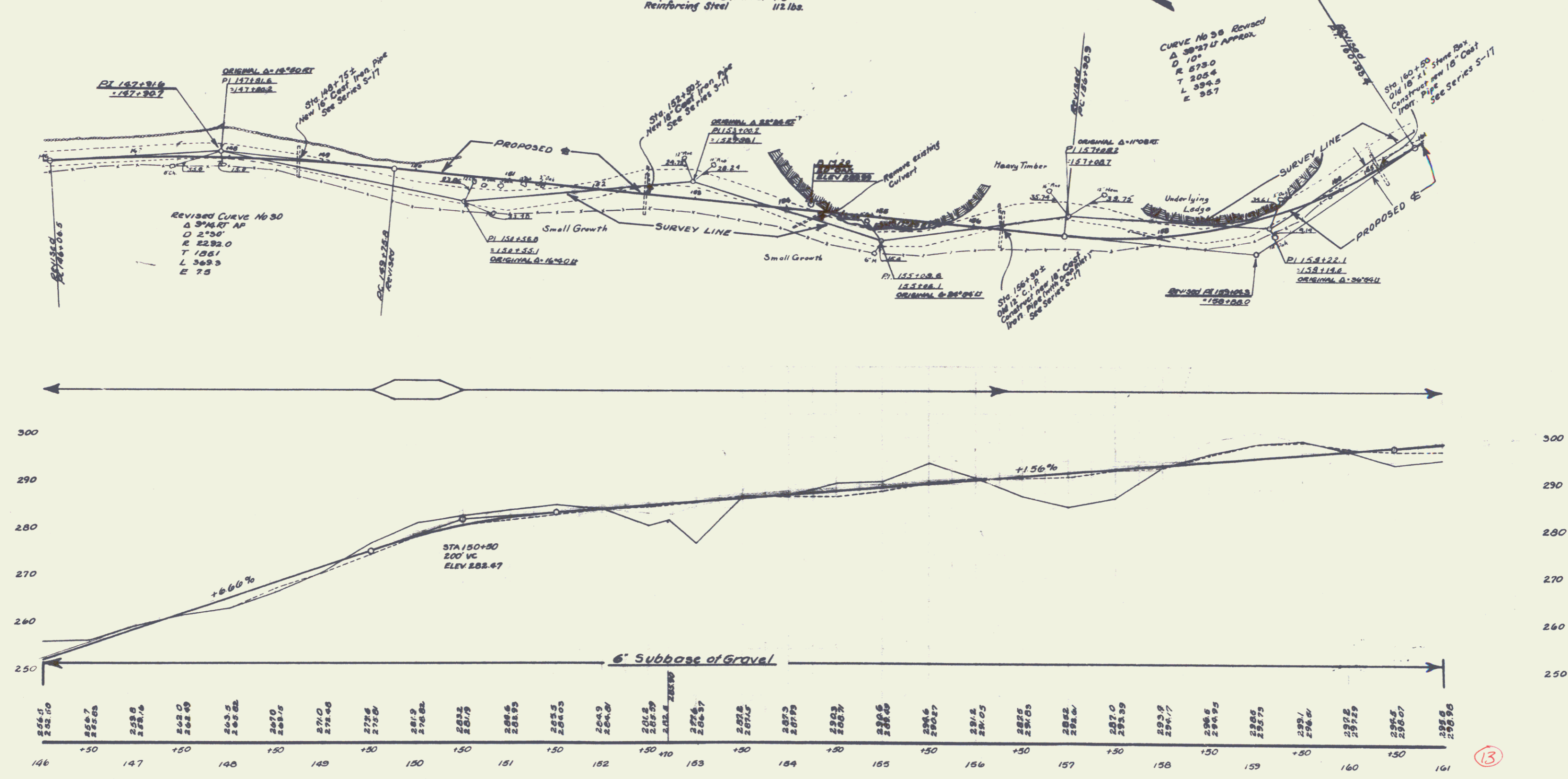


WOOD GUARD RAIL REQUIRED
ON LEFT
 Sta. 148+63 to Sta. 148+87 24 lin. ft.
 " 152+38 " " 152+62 24 " "
 " 158+18 " " 158+42 24 " "
 " 160+38 " " 160+62 24 " "
ON RIGHT
 Sta. 148+63 to Sta. 148+87 24 lin. ft.

CABLE GUARD RAIL REQUIRED
ON RIGHT
 Sta. 152+00 to Sta. 154+00 200 lin. ft.
 " 156+25 " " 158+25 200 " "
 " 160+38 " " 161+00 62 " "

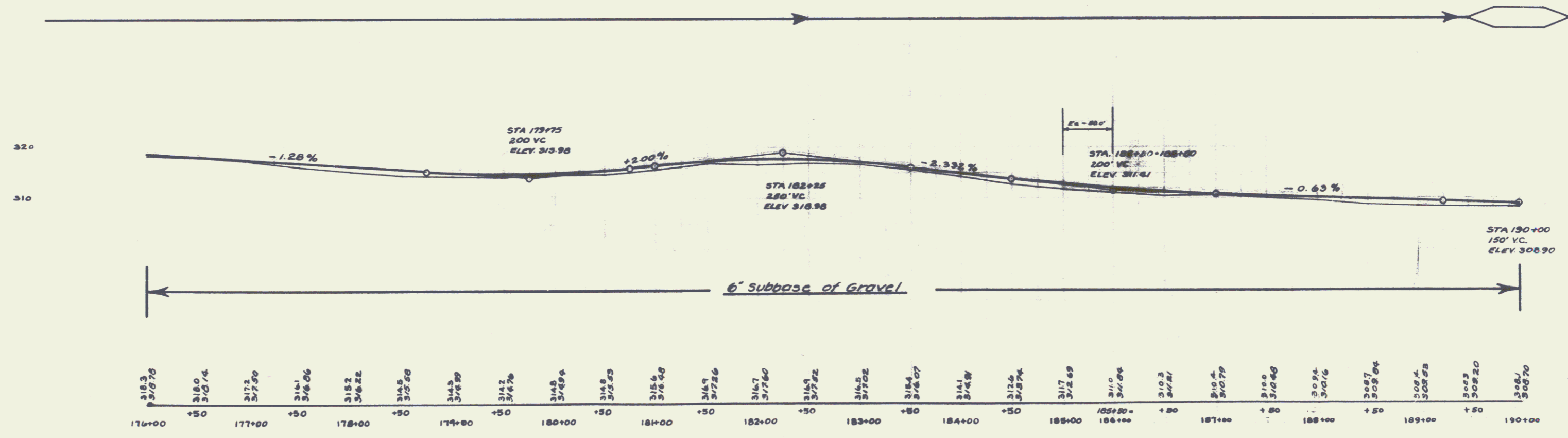
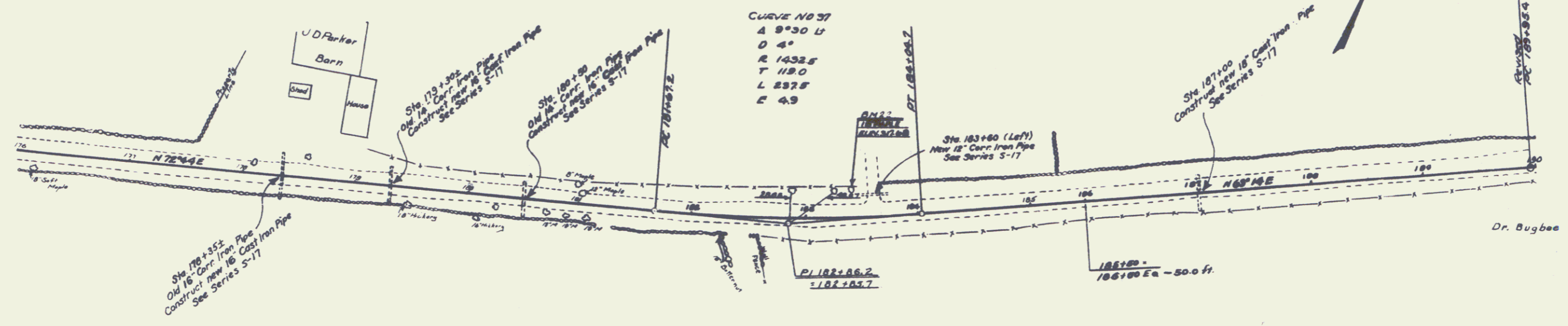
NEW CULVERTS REQUIRED
 Sta. 148+75± 18" Cast Iron Pipe Culv. 32 lin. ft.
 Conc. Class B (1-2 1/2-5) 2.7 cu. yds.
 Reinforcing Steel 33 lbs.
 Sta. 152+80± 18" Cast Iron Pipe Culv. 44 lin. ft.
 Conc. Class B (1-2 1/2-5) 3.1 cu. yds.
 Reinforcing Steel 33 lbs.
 Sta. 156+30± 18" Cast Iron Pipe Culv. 40 lin. ft.
 Conc. Class B (1-2 1/2-5) 3.3 lbs.
 Sta. 160+50± 18" Cast Iron Pipe Culv. (with Drop Inlet) 40 lin. ft.
 Concrete Class A (1-2-4) 1.5 cu. yds.
 " B (1-2 1/2-5) 1.5 " "
 Reinforcing Steel 112 lbs.

NO.	DATE	BY	SCALE	SHEET	TOTAL
85-6	1926	13		76	



BM#20 SPIKE IN 20' OAK ON LT. STA. 154+25 ELEV 289.99'

WOOD GUARD RAIL REQUIRED		NEW CULVERTS REQUIRED		DRIVEWAY CULVERTS REQUIRED	
ON RIGHT		ON LEFT		ON LEFT	
Sta. 178+23 to Sta. 178+47	24 lin. ft.	Sta. 178+35±	18" C.I.P. Culv. 40 lin. ft.	Sta. 183+60	12" Corr. Iron Pipe 16 lin. ft.
- 179+18 "	" 179+42 24 "		Concrete Class B (1-2 1/2-5) 4.8 cu. yds		Conc. Class B (1-2 1/2-5) 1 cu. yd.
- 180+38 "	" 180+62 24 "	Sta. 179+30±	Reinforcing Steel 33 lbs		
- 186+88 "	" 187+12 24 "		16" Cast Iron Pipe Culv. 32 lin. ft.		
			Concrete Class B (1-2 1/2-5) 2.7 cu. yds		
ON LEFT			Reinforcing Steel 33 lbs		
Sta. 178+23 to Sta. 178+47	24 lin. ft.	Sta. 180+30	16" Cast Iron Pipe Culv. 32 lin. ft.		
- 179+18 "	" 179+42 24 "		Concrete Class B (1-2 1/2-5) 2.7 cu. yds		
- 180+38 "	" 180+62 24 "		Reinforcing Steel 33 lbs		
- 186+88 "	" 187+12 24 "	Sta. 187+00	18" Cast Iron Pipe 32 lin. ft.		
			Concrete Class B (1-2 1/2-5) 3.1 cu. yds		
			Reinforcing Steel 33 lbs		



J.A. Williams 3/12/28

15

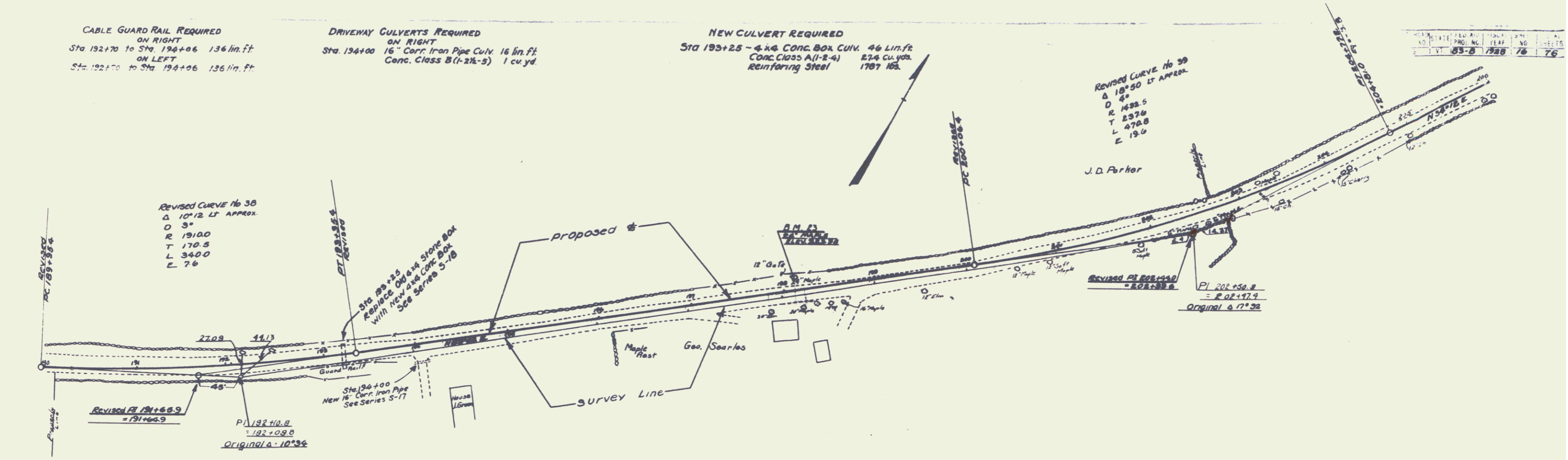
14

CABLE GUARD RAIL REQUIRED
 ON RIGHT
 Sta. 192+70 to Sta. 194+06 136 lin. ft.
 ON LEFT
 Sta. 192+70 to Sta. 194+06 136 lin. ft.

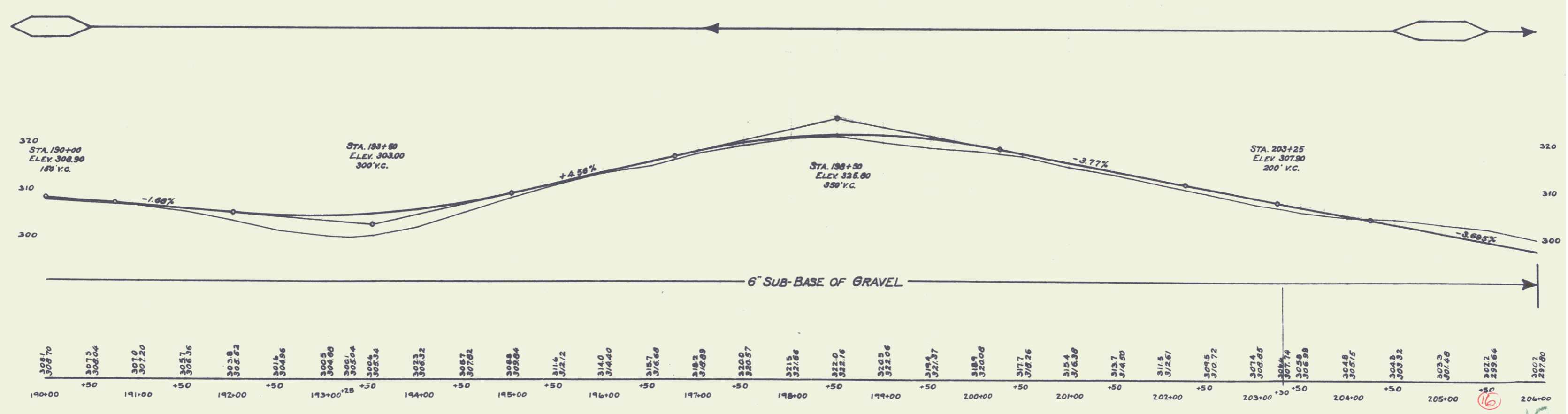
DRIVEWAY CULVERTS REQUIRED
 ON RIGHT
 Sta. 194+00 16" Corr. Iron Pipe Culv. 16 lin. ft.
 Conc. Class B (1-2 1/2-5) 1 cu. yd.

NEW CULVERT REQUIRED
 STA 193+25 - 4x4 Conc. Box Culv. 46 Lin. ft.
 Conc. Class A (1-2-4) 274 cu. yds.
 Reinforcing Steel 1787 lbs.

NO.	DATE	BY	CHKD.
1	10-15-76	JAW	JAW
2	11-15-76	JAW	JAW
3	12-15-76	JAW	JAW



J.A. WILLIAMS
 2/11/78



BM #23 SPIKE IN 24" MAPLE ON LT. STA. 198+20 ELEV. 323.95'

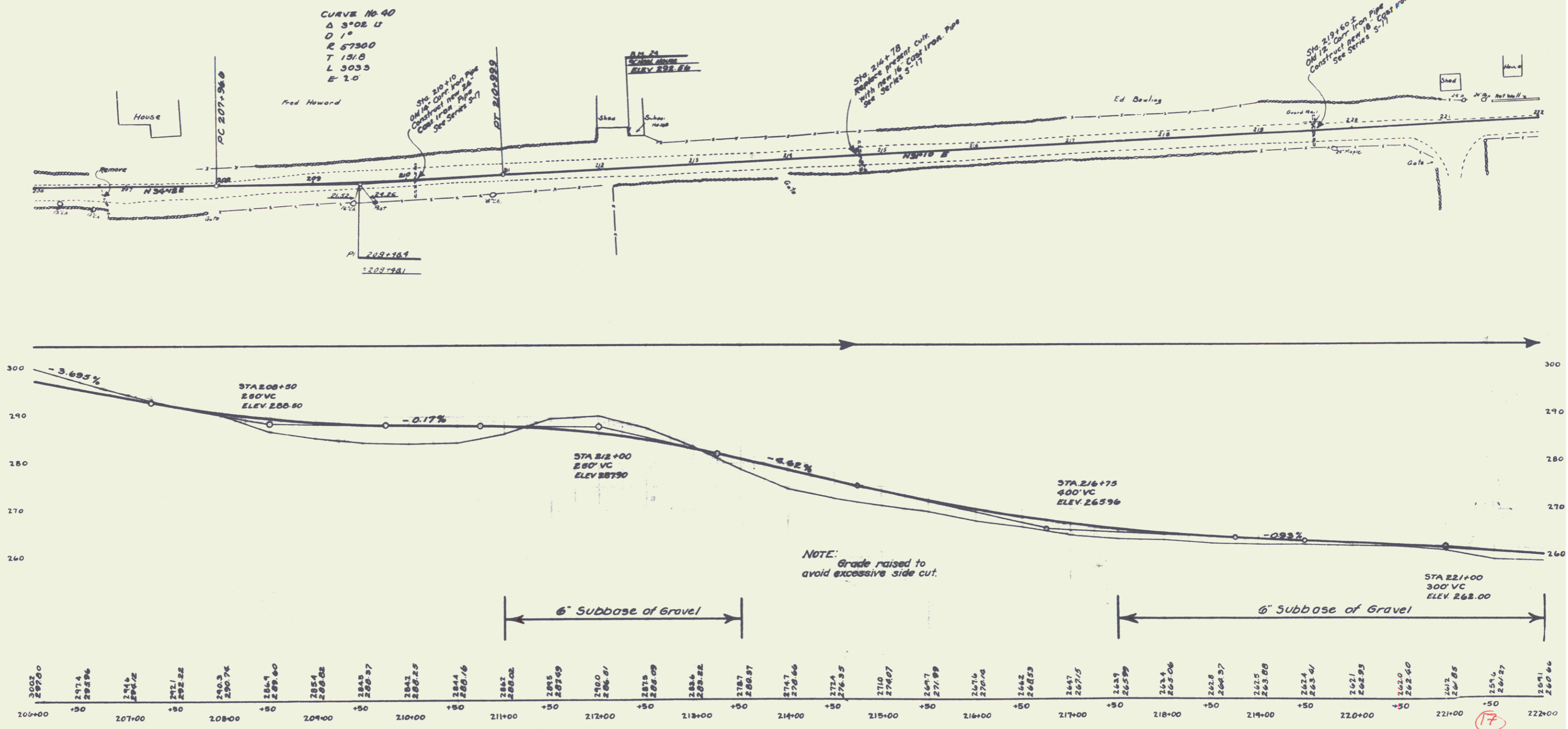
15

WOOD GUARD RAIL REQUIRED
ON RIGHT
 Sta. 209+88 to Sta. 210+12 24 lin. ft.
 " 214+66 " " 216+90 24 " "
 " 219+48 " " 219+72 24 " "
ON LEFT
 Sta. 209+88 to Sta. 210+12 24 lin. ft.
 " 214+66 " " 214+90 24 " "
 " 219+48 " " 219+72 24 " "

NEW CULVERTS REQUIRED
 Sta. 210+18 24" Cast Iron Pipe Culv. 36 lin. ft.
 Conc. Class A (1-2-4) 2.6 cu. yds
 Reinforcing Steel 58 lbs
 Sta. 214+78 16" Cast Iron Pipe Culv. 32 lin. ft.
 Conc. Class B (1-2 1/2-5) 2.7 cu. yds
 Reinforcing Steel 33 lbs
 Sta. 219+60 18" Cast Iron Pipe Culv. 32 lin. ft.
 Conc. Class B (1-2 1/2-5) 3.1 cu. yds
 Reinforcing Steel 33 lbs.

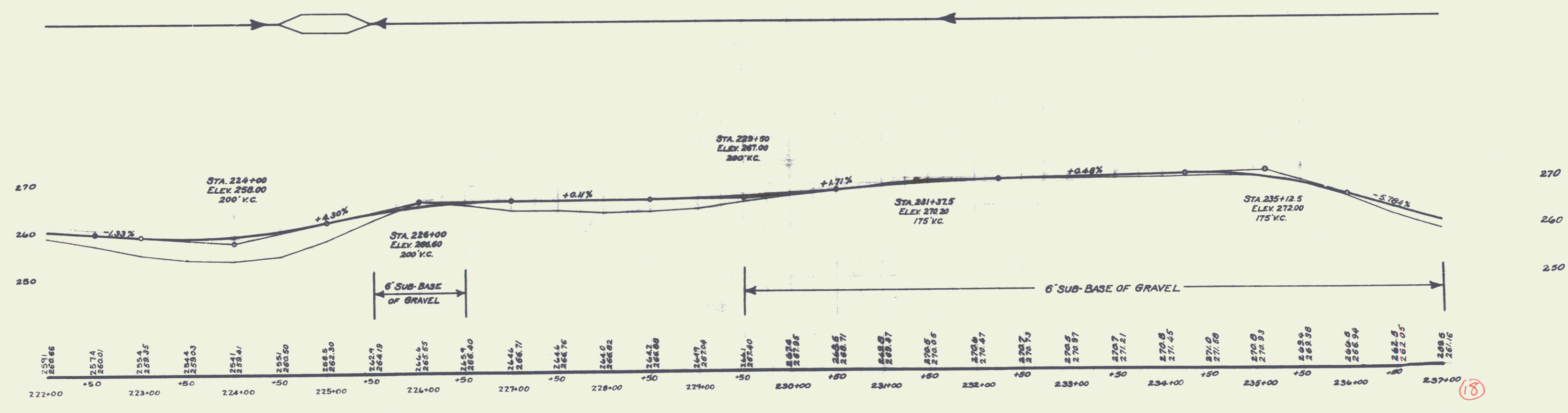
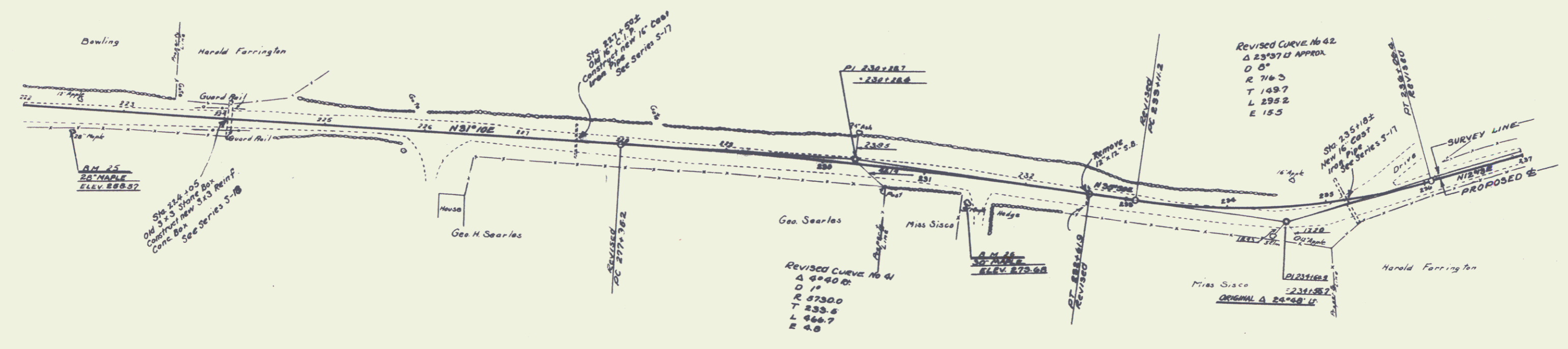
DRIVEWAY CULVERTS REQUIRED
ON LEFT
 Sta. 207+00± 16" Cast Iron Pipe 20 lin. ft.
 Conc. Class B (1-2 1/2-5) 1 cu. yd.

DATE	FILE NO.	SCALE
10-1-58	103-B	1" = 40'
PROJECT	NO.	LEAF
VT 103-B	103-B	17
		76



B.M. 25 ON S.E. CORNER STONE OF SCHOOL HOUSE LT. STA. 212+27 ELEV. 292.56'

- | | | |
|---|---|---|
| WOOD GUARD RAIL REQUIRED | CABLE GUARD RAIL REQUIRED | NEW CULVERTS REQUIRED |
| ON LEFT | ON RIGHT | |
| Sta. 227+38 to Sta. 227+62 2.4 lin. ft. | Sta. 223+80 to Sta. 224+76 176 lin. ft. | Sta. 224+05 3 X 3 Reinf. Conc. Box Culv. 40 lin. ft. |
| 235+06 to 235+30 2.4 " | 235+06 to 237+00 194 " | Conc. Class A (1-2-4) 18.6 cu. yds |
| ON RIGHT | ON LEFT | Reinforcing Steel 1216 lbs. |
| Sta. 227+38 to Sta. 227+62 2.4 lin. ft. | Sta. 223+50 to Sta. 224+94 144 lin. ft. | Sta. 227+38± 16" Cast Iron Pipe Culv. (with Drop Inlet) 32 lin. ft. |
| | | Conc. Class A (1-2-4) 1.5 cu. yds |
| | | B (1-2 1/2-5) 1.4 " |
| | | Reinforcing Steel 112 lbs |
| | | Sta. 235+18± 16" Cast Iron Pipe Culv. (with Drop Inlet) 50 lin. ft. |
| | | Conc. Class A (1-2-4) 1.5 cu. yds |
| | | B (1-2 1/2-5) 1.4 " |
| | | Reinforcing Steel 112 lbs |



DM#25 Spike in 28' MAPLE on Rt. Sta. 222+80 Elev. 258.57
 DM#26 Spike in 30' Maple on Rt. Sta. 231+45 Elev. 273.63

WOOD GUARD RAIL REQUIRED
ON LEFT
Sta. 249+18 to Sta. 249+42 lin. ft.

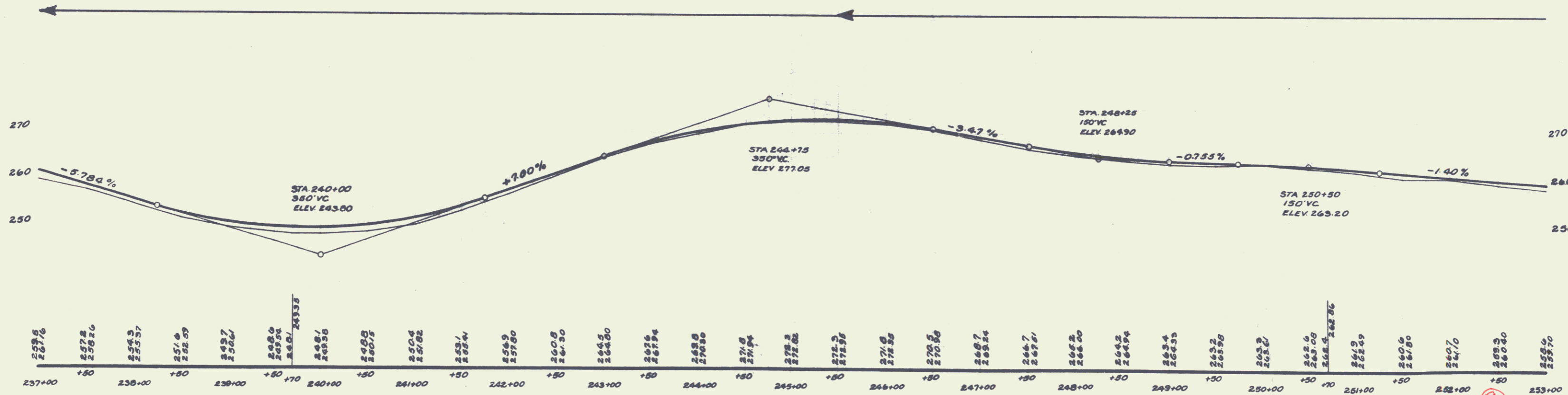
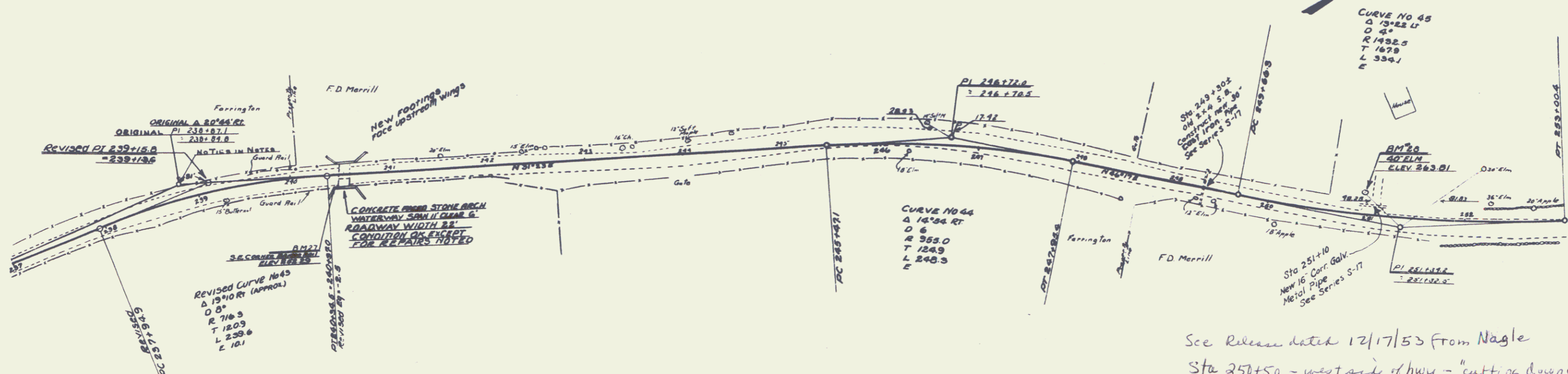
CABLE GUARD RAIL REQUIRED
ON RIGHT
Sta. 237+00 to Sta. 241+86 486 lin. ft.
" 248+76 " " 251+24 248 " "
ON LEFT
Sta. 239+85 to Sta. 242+25 240 lin. ft.

NEW CULVERTS REQUIRED
Sta. 249+30± 30" Cast Iron Pipe 36 lin. ft.
Conc. Class A (1-2-4) 3.5 cu. yds
Reinforcing Steel 58 lbs.

BRIDGE REPAIRS
Sta. 240+55± New Footings Face Upstream Wings
Class A Conc (1-2-4) 5 cu. yds.

DRIVEWAY CULVERT REQUIRED
Sta. 251+00 Lt 16" Corrug. Metal Pipe 16 Lin. ft.
Conc. Class B (1-1.5-3) 1 cu. yd.

311	311	311	311	311	311
11	11	11	11	11	11
11	11	11	11	11	11

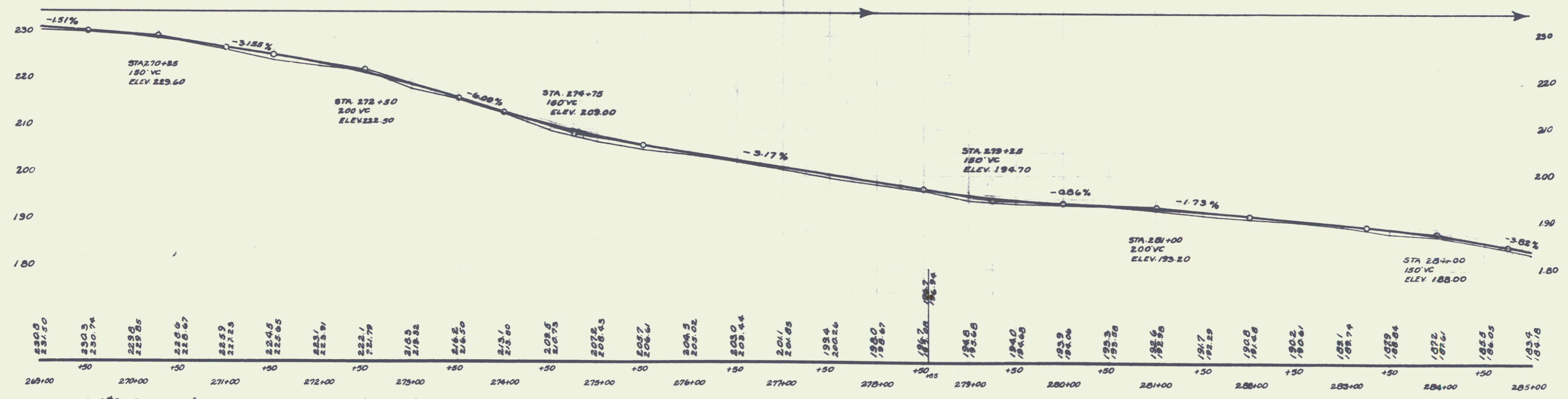
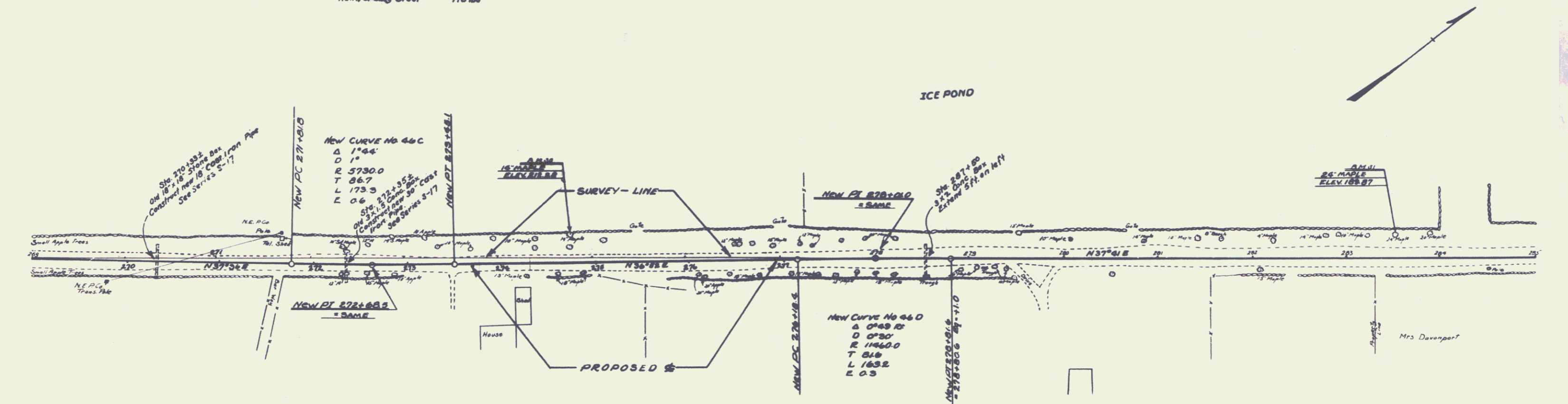


B.M. 21 SE CORNER OF BRIDGE RAIL ON RT. STA. 240+44 ELEV. 252.29
B.M. 28 SPIKE IN 40' ELM ON LT. STA. 251+00 ELEV. 263.81'

WOOD GUARD RAIL REQUIRED
ON RIGHT
 Sta 270+21 to Sta. 270+45 24 lin. ft.
 " 272+23 " " 272+47 24 " "
 " 278+38 " " 278+62 24 " "
ON LEFT
 Sta. 270+21 to Sta. 270+45 24 " "
 " 272+23 " " 272+47 24 " "
 " 278+38 " " 278+62 24 " "

NEW CULVERTS REQUIRED
 Sta. 270+33± 18" Cast Iron Pipe Culv. 36 lin. ft.
 Conc. Class B (1-2-K-5) 3.1 cu. yds
 Reinforcing Steel 33 lbs
 Sta. 272+35± 30" Cast Iron Pipe Culv. 36 lin. ft.
 Conc. Class A (1-2-A) 3.5 cu. yds
 Reinforcing Steel 50 lbs
 Sta. 278+50 3x2 Rect. Conc. Box Culv. (Extend 5' to left)
 Conc. Class A (1-2-A) 3.2 cu. yds
 Reinforcing Steel 178 lbs

DATE	PROJECT	SCALE	SHEET	TOTAL SHEETS
193-8-22	21	1" = 40'	21	76



B.M. #30 SPIKE IN 14" MAPLE ON LT STA 274+75 ELEV. 212.28'
 B.M. #31 SPIKE IN 24" MAPLE ON LT STA 283+50 ELEV. 189.87'

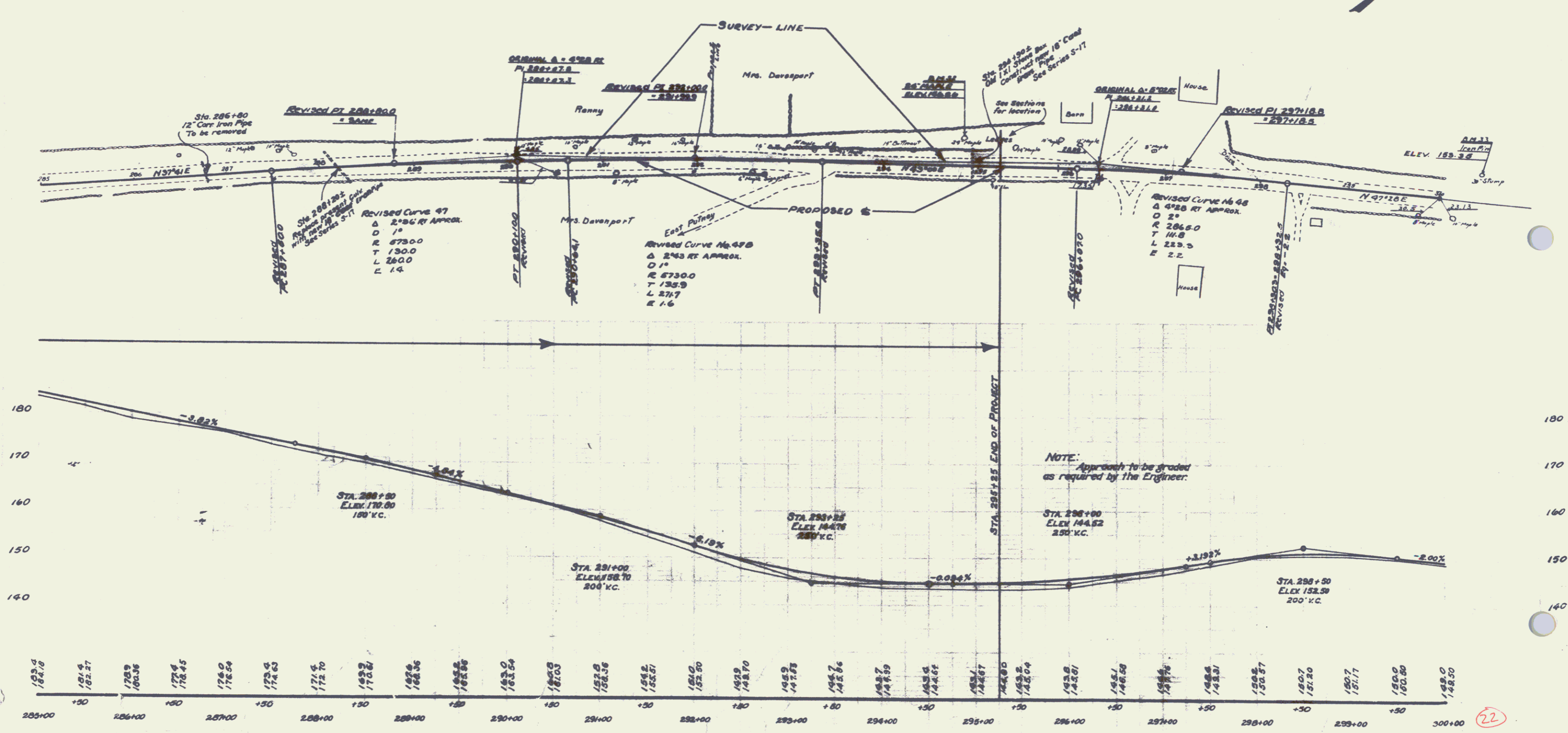
(21)

20

WOOD GUARD RAIL REQUIRED
ON RIGHT
Sta. 288+00 to Sta. 288+32 2.4 lin. ft.
" 294+78 " " 295+02 2.4 " "
ON LEFT
Sta. 288+00 to Sta. 288+32 2.4 lin. ft.
" 294+78 " " 295+02 2.4 " "

NEW CULVERTS REQUIRED
Sta. 288+20± 18" Class Iron Pipe Culv. 4.4 lin. ft.
Conc. Class B (1-2 1/2-5) 3.1 cu. yds.
Reinforcing Steel 33 lbs
Sta. 294+90± 18" Class Iron Pipe Culv. 3.6 lin. ft.
Conc. Class B (1-2 1/2-5) 3.1 cu. yds.
Reinforcing Steel 33 lbs

03-6 1932 2



BM 32 SPIKE IN 24" MAPLE ON LEFT STA. 294+85 ELEV. 146.84
BM 33 IRON PIN IN 30" MAPLE STUMP ON LEFT STA. 300+25 ELEV. 188.35

22

21