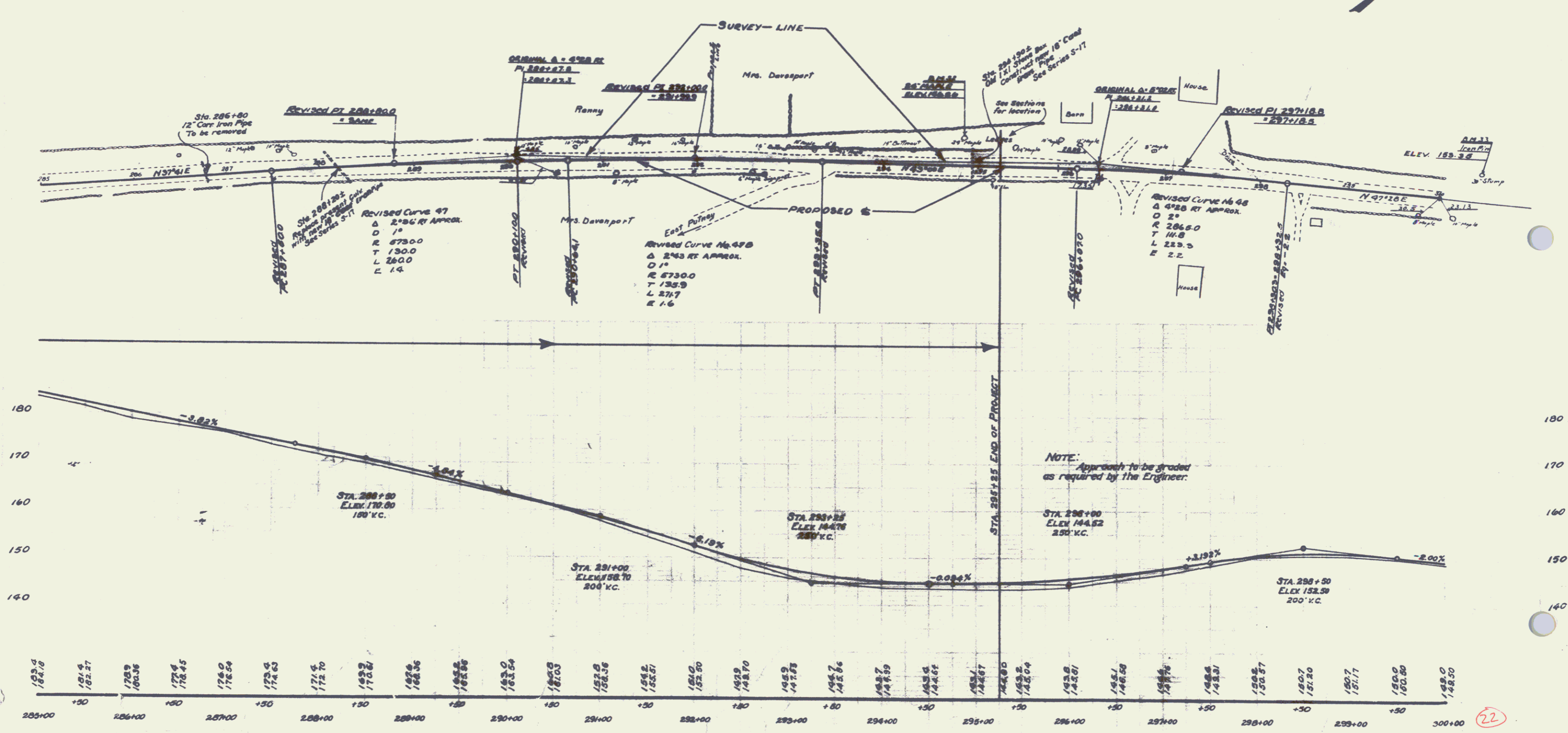


WOOD GUARD RAIL REQUIRED
ON RIGHT
Sta. 288+00 to Sta. 288+32 2.4 lin. ft.
" 294+78 " " 295+02 2.4 " "
ON LEFT
Sta. 288+00 to Sta. 288+32 2.4 lin. ft.
" 294+78 " " 295+02 2.4 " "

NEW CULVERTS REQUIRED
Sta. 288+20± 18" Class Iron Pipe Culv. 4.4 lin. ft.
Conc. Class B (1-2 1/2-5) 3.1 cu. yds.
Reinforcing Steel 33 lbs
Sta. 294+90± 18" Class Iron Pipe Culv. 3.6 lin. ft.
Conc. Class B (1-2 1/2-5) 3.1 cu. yds.
Reinforcing Steel 33 lbs

03-6 1932 2



BM 32 SPIKE IN 24" MAPLE ON LEFT STA. 294+85 ELEV. 146.84
BM 33 IRON PIN IN 30" MAPLE STUMP ON LEFT STA. 300+25 ELEV. 188.35

22

21