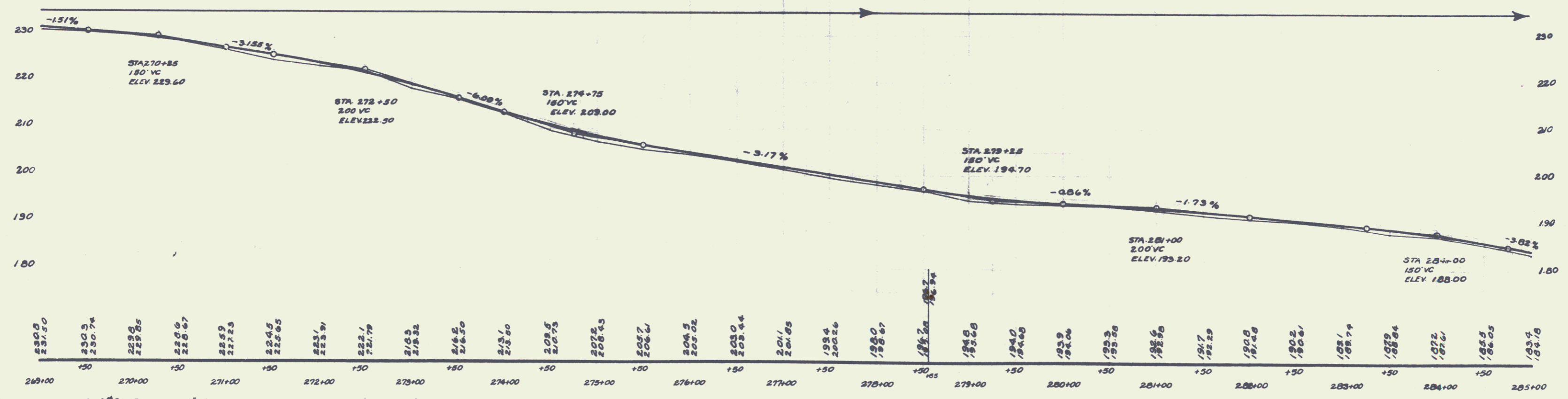
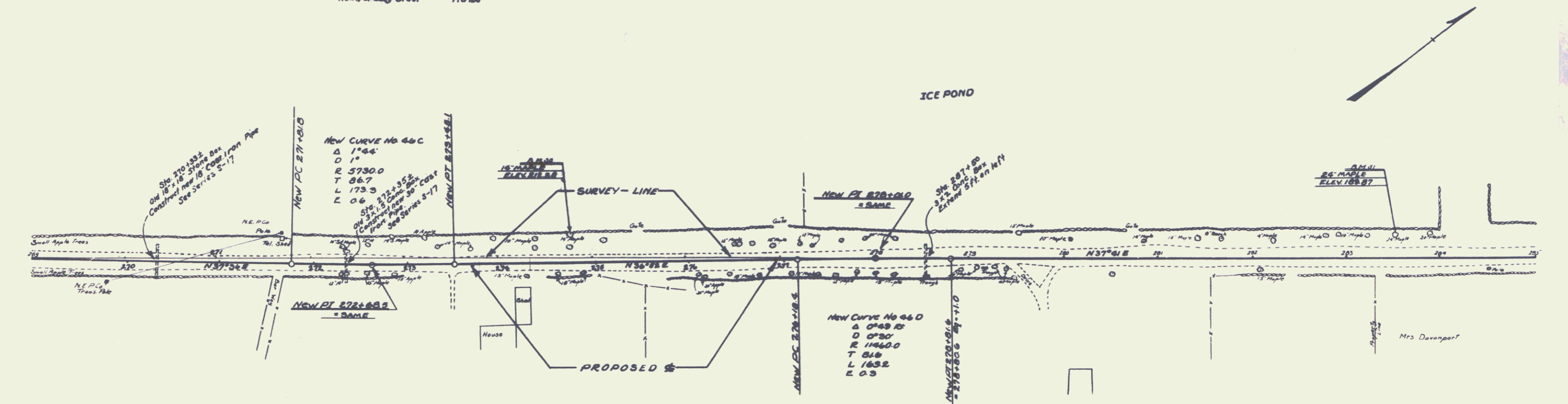


WOOD GUARD RAIL REQUIRED
ON RIGHT
Sta 270+21 to Sta. 270+45 24 lin. ft.
- 272+23 - " 272+47 24 - "
- 278+38 - " 278+62 24 - "
ON LEFT
Sta. 270+21 to Sta. 270+45 24 - "
- 272+23 - " 272+47 24 - "
- 278+38 - " 278+62 24 - "

NEW CULVERTS REQUIRED
Sta. 270+33± 18" Cast Iron Pipe Culv. 36 lin. ft.
Conc. Class B (1-2K-5) 3.1 cu. yds
Reinforcing Steel 33 lbs
Sta. 272+35± 30" Cast Iron Pipe Culv. 36 lin. ft.
Conc. Class A (1-2-4) 3.5 cu. yds
Reinforcing Steel 50 lbs
Sta. 278+50 3x2 Reinf. Conc. Box Culv. (Extend 5' from left)
Conc. Class A (1-2-4) 3.2 cu. yds
Reinforcing Steel 178 lbs

DATE	PROJECT	SCALE	SHEET	TOTAL SHEETS
189-8	1928	21	76	



B.M. #30 SPIKE IN 14" MAPLE ON LT STA 274+75 ELEV 212.28'
B.M. #31 SPIKE IN 24" MAPLE ON LT STA 283+50 ELEV 189.87'

21

20