

WOOD GUARD RAIL REQUIRED
ON LEFT
Sta. 249+18 to Sta. 249+42 lin. ft.

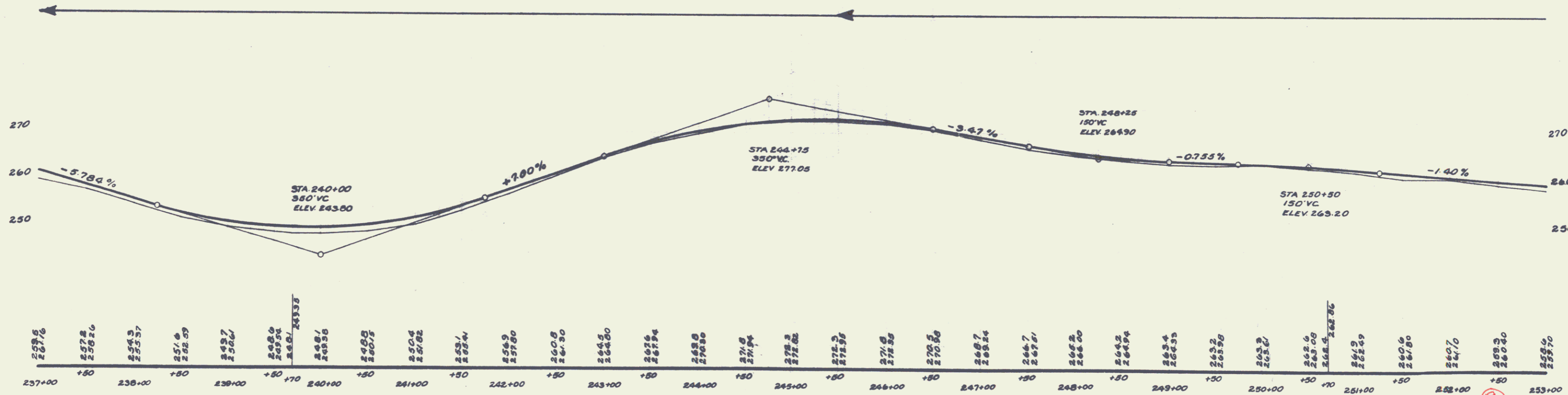
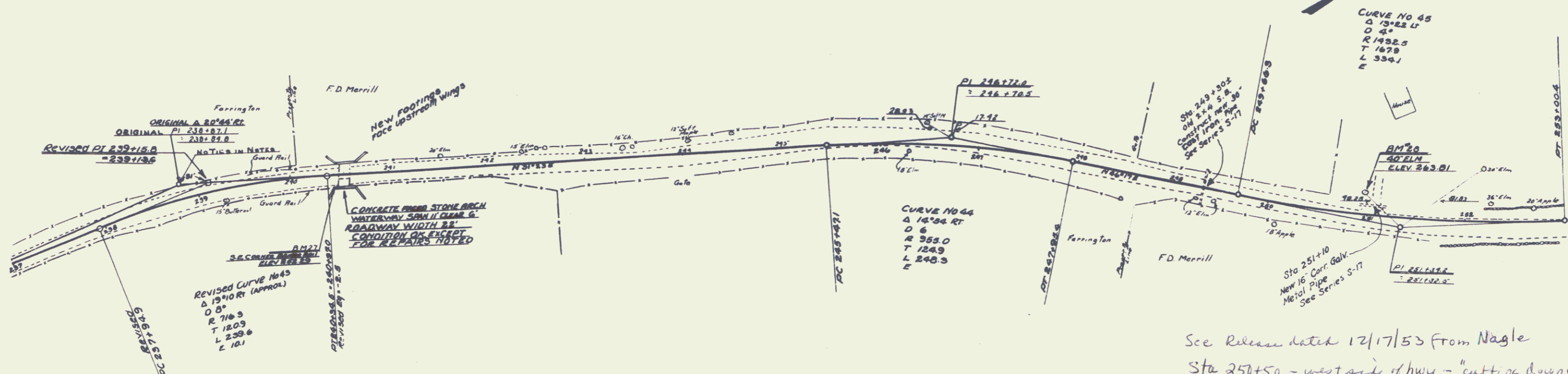
CABLE GUARD RAIL REQUIRED
ON RIGHT
Sta. 237+00 to Sta. 241+86 486 lin. ft.
" 248+76 " " 251+24 248 " "
ON LEFT
Sta. 239+85 to Sta. 242+25 240 lin. ft.

NEW CULVERTS REQUIRED
Sta. 249+30± 30" Cast Iron Pipe 36 lin. ft.
Conc. Class A (1-2-4) 3.5 cu. yds
Reinforcing Steel 58 lbs.

BRIDGE REPAIRS
Sta. 240+55± New Footings Face Upstream Wings
Class A Conc (1-2-4) 5 cu. yds.

DRIVEWAY CULVERT REQUIRED
Sta. 251+00 Lt 16" Corrug. Galv. Metal Pipe 16 Lin. ft.
Conc. Class B (1-1.5-3) 1 cu. yd.

311	311	311	311	311	311
11	11	11	11	11	11
11	11	11	11	11	11



B.M. 21 SE CORNER OF BRIDGE RAIL ON RT. STA. 240+44 ELEV. 252.29
B.M. 28 SPIKE IN 40' ELM ON LT. STA. 251+00 ELEV. 263.81