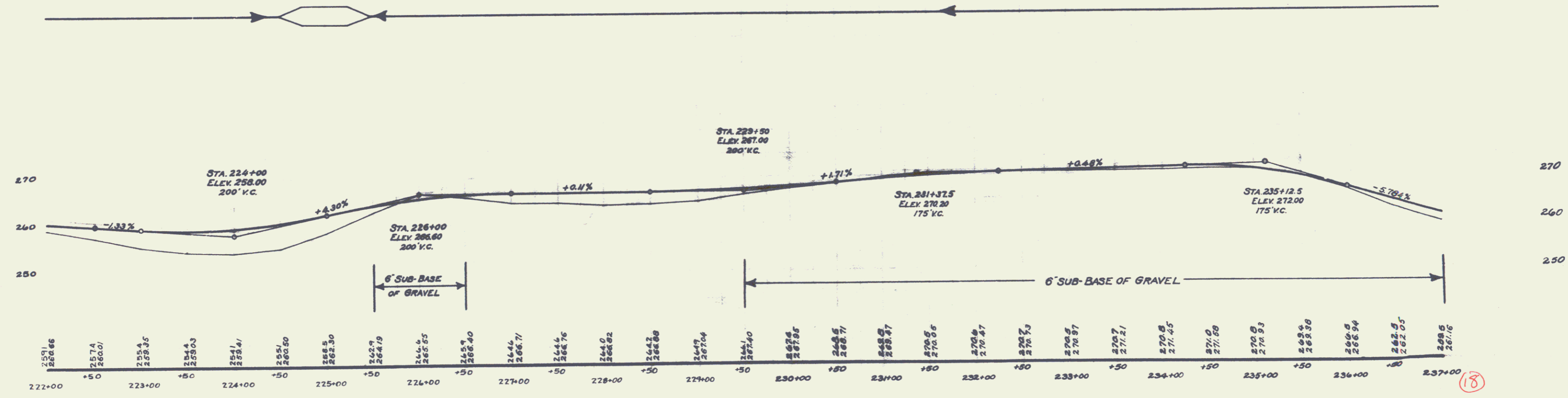
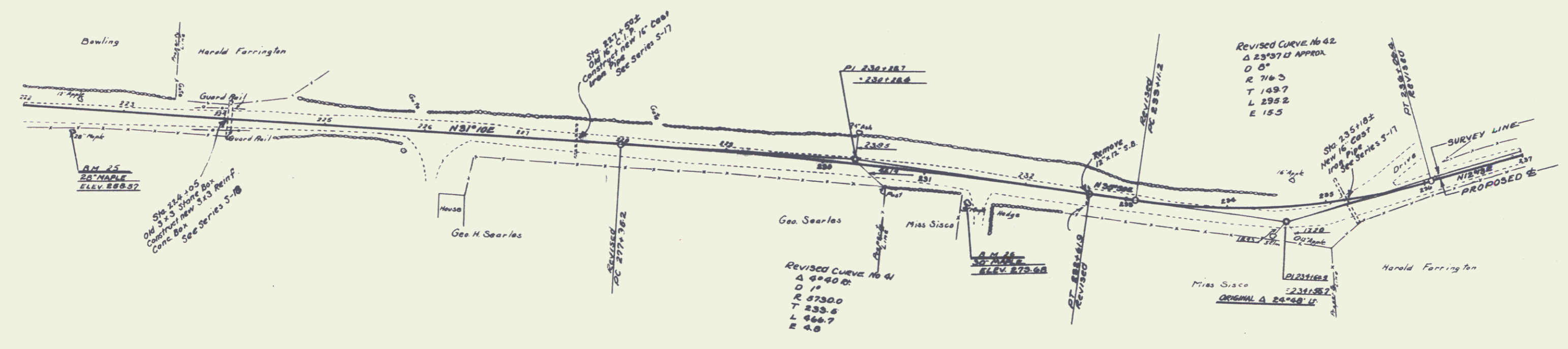


- | | | |
|---|---|---|
| WOOD GUARD RAIL REQUIRED | CABLE GUARD RAIL REQUIRED | NEW CULVERTS REQUIRED |
| ON LEFT | ON RIGHT | |
| Sta. 227+38 to Sta. 227+62 2.4 lin. ft. | Sta. 223+80 to Sta. 224+76 176 lin. ft. | Sta. 224+05 3 X 3 Reinf. Conc. Box Culv. 40 lin. ft. |
| 235+06 to 235+30 2.4 " | 235+06 to 237+00 194 " | Conc. Class A (1-2-4) 18.6 cu. yds |
| ON RIGHT | ON LEFT | Reinforcing Steel 1216 lbs. |
| Sta. 227+38 to Sta. 227+62 2.4 lin. ft. | Sta. 223+50 to Sta. 224+94 144 lin. ft. | Sta. 227+38± 16" Cast Iron Pipe Culv. (with Drop Inlet) 32 lin. ft. |
| | | Conc. Class A (1-2-4) 1.5 cu. yds |
| | | B (1-2 1/2-5) 1.4 " |
| | | Reinforcing Steel 112 lbs |
| | | Sta. 235+18± 16" Cast Iron Pipe Culv. (with Drop Inlet) 50 lin. ft. |
| | | Conc. Class A (1-2-4) 1.5 cu. yds |
| | | B (1-2 1/2-5) 1.4 " |
| | | Reinforcing Steel 112 lbs |



DM#25 Spike in 28' MAPLE on Rt. Sta. 222+80 Elev. 258.57
 DM#26 Spike in 30' Maple on Rt. Sta. 231+45 Elev. 273.63