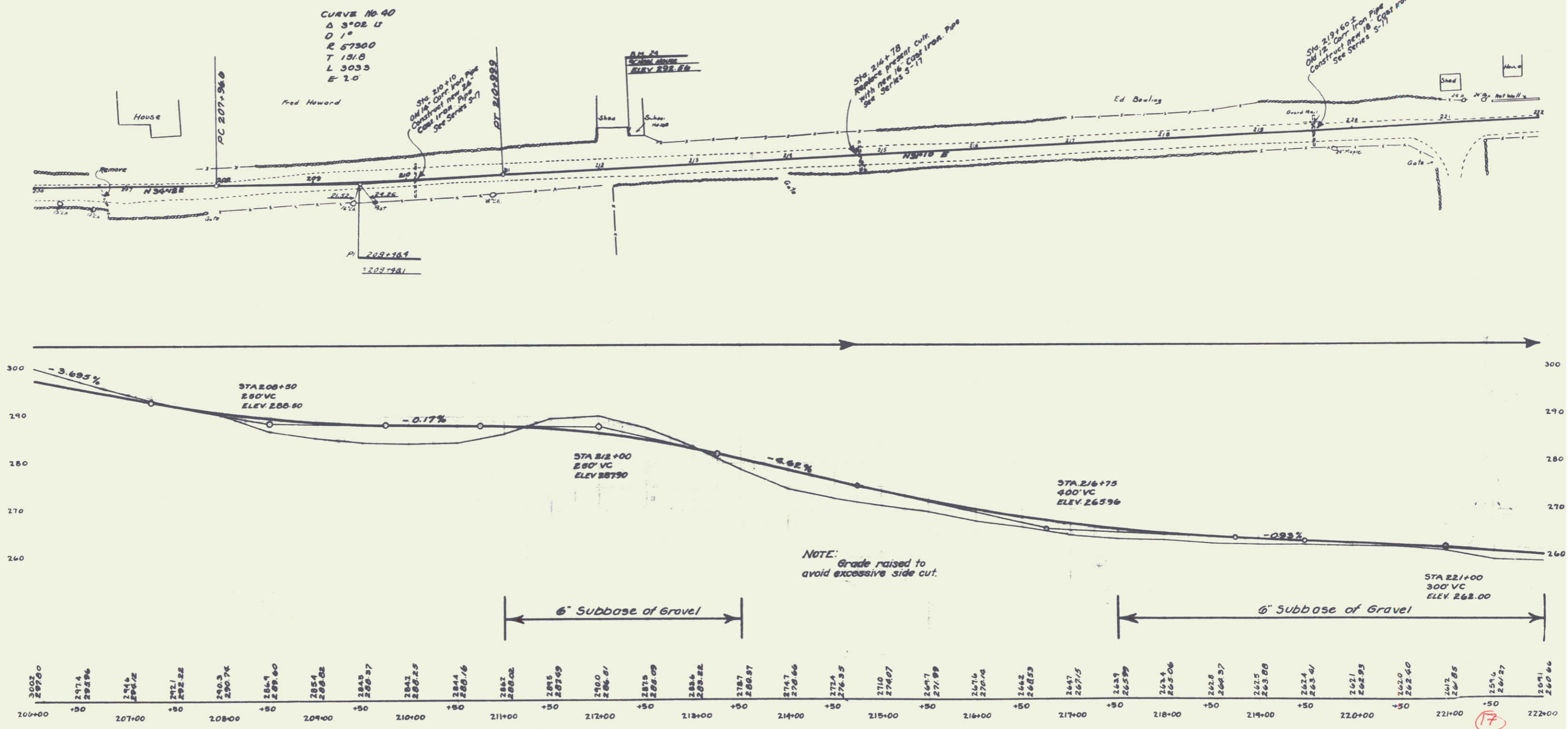


WOOD GUARD RAIL REQUIRED
ON RIGHT
 Sta. 209+88 to Sta. 210+12 24 lin. ft.
 " 214+66 " " 216+90 24 " "
 " 219+48 " " 219+72 24 " "
ON LEFT
 Sta. 209+88 to Sta. 210+12 24 lin. ft.
 " 214+66 " " 214+90 24 " "
 " 219+48 " " 219+72 24 " "

NEW CULVERTS REQUIRED
 Sta. 210+18 24" Cast Iron Pipe Culv. 36 lin. ft.
 Conc. Class A (1-2-4) 2.6 cu. yds
 Reinforcing Steel 58 lbs
 Sta. 214+78 16" Cast Iron Pipe Culv. 32 lin. ft.
 Conc. Class B (1-2 1/2-5) 2.7 cu. yds
 Reinforcing Steel 33 lbs
 Sta. 219+60 18" Cast Iron Pipe Culv. 32 lin. ft.
 Conc. Class B (1-2 1/2-5) 3.1 cu. yds
 Reinforcing Steel 83 lbs.

DRIVEWAY CULVERTS REQUIRED
ON LEFT
 Sta. 207+00± 16" Cast Iron Pipe 20 lin. ft.
 Conc. Class B (1-2 1/2-5) 1 cu. yd.

| | | |
|-----------|----------|----------|
| DATE | FILE NO. | SCALE |
| NOV. 1958 | 103-B | 1" = 40' |
| PROJECT | NO. | SHEET |
| VT. 103-B | 103-B | 17 |



B.M. 25 ON S.E. CORNER STONE OF SCHOOL HOUSE LT. STA. 212+27 ELEV. 292.56'