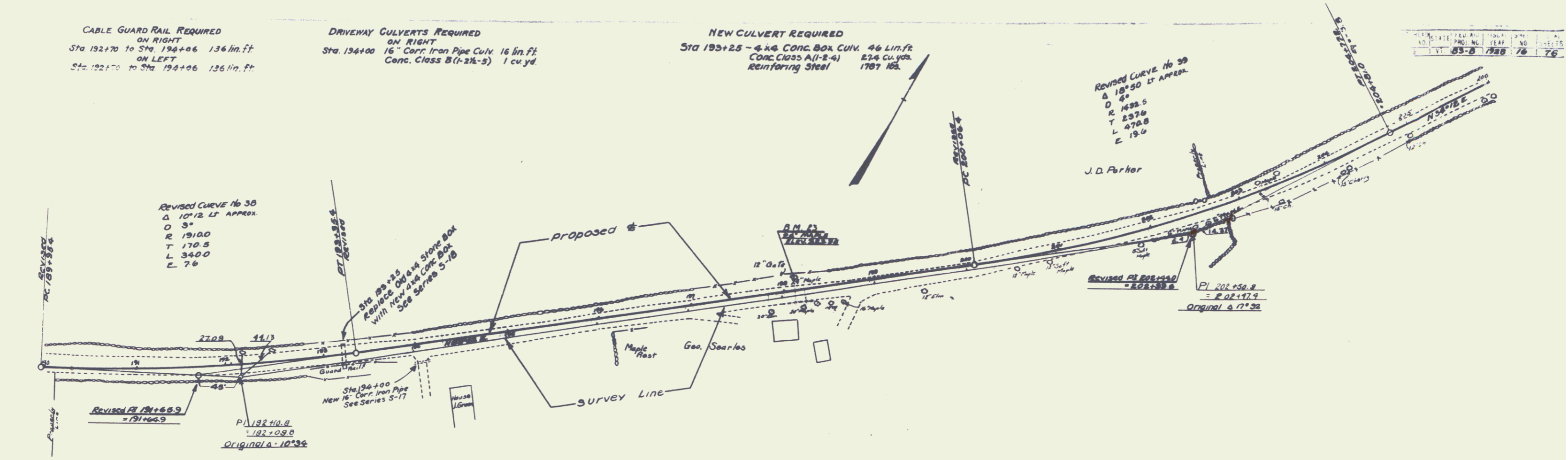


**CABLE GUARD RAIL REQUIRED**  
 ON RIGHT  
 Sta. 192+70 to Sta. 194+06 136 lin. ft.  
 ON LEFT  
 Sta. 192+70 to Sta. 194+06 136 lin. ft.

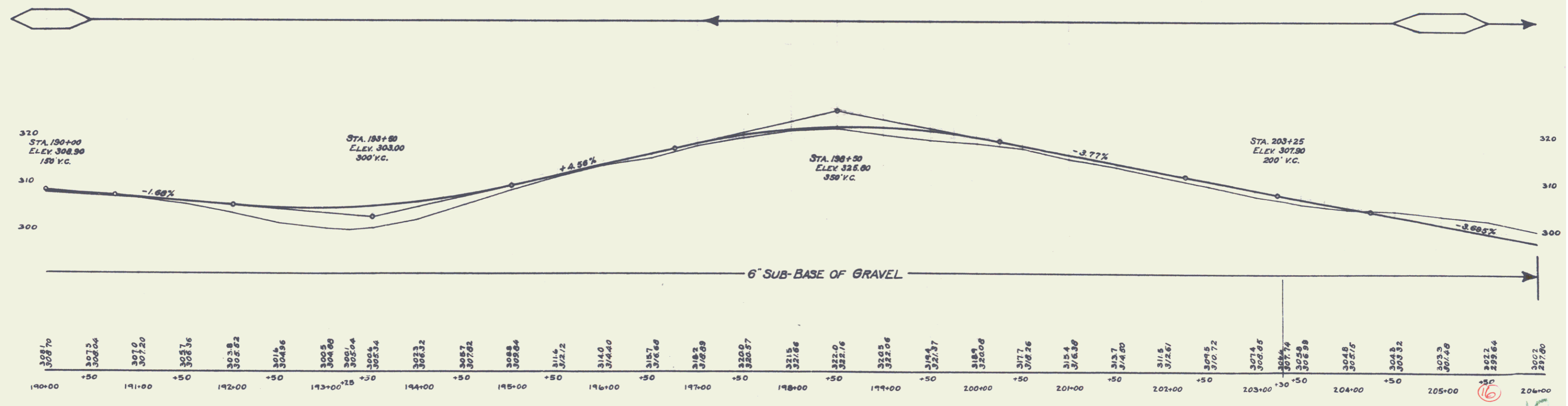
**DRIVEWAY CULVERTS REQUIRED**  
 ON RIGHT  
 Sta. 194+00 16" Corr. Iron Pipe Culv. 16 lin. ft.  
 Conc. Class B (1-2 1/2-5) 1 cu. yd.

**NEW CULVERT REQUIRED**  
 STA 193+25 - 4x4 CONC. BOX CULV. 46 Lin. ft.  
 CONC. CLASS A (1-2-4) 274 cu. yds.  
 Reinforcing Steel 1787 lbs.

NO.	DATE	BY	REVISION
1	10-15-76	JAW	PRELIMINARY
2	11-15-76	JAW	REVISED



J.A. WILLIAMS 2/11/76



BM #23 SPIKE IN 24" MAPLE ON LT. STA. 198+20 ELEV. 323.95'

15