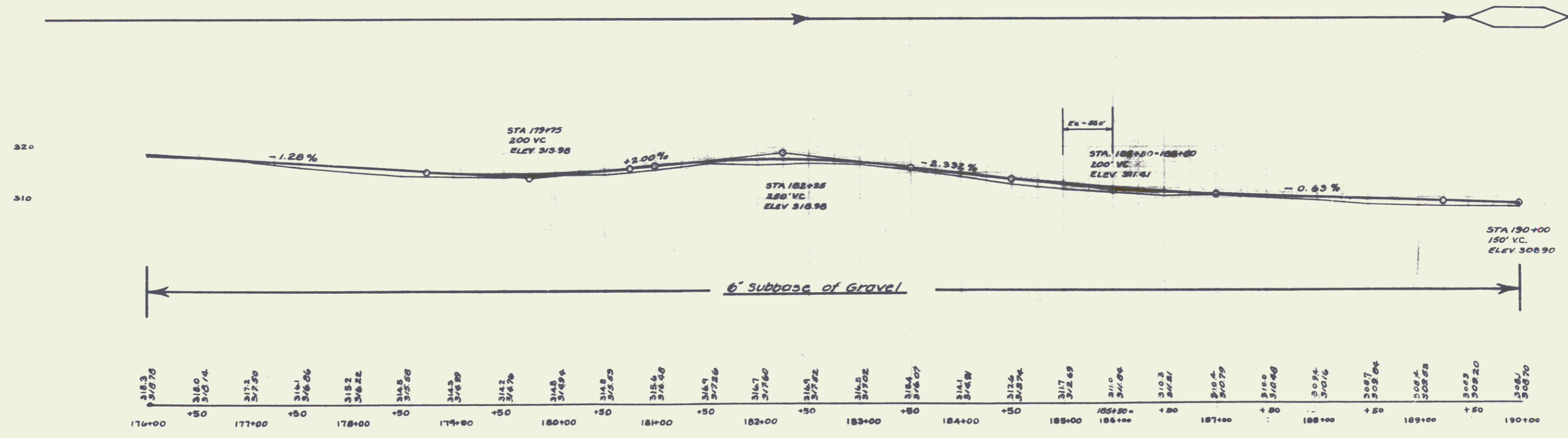
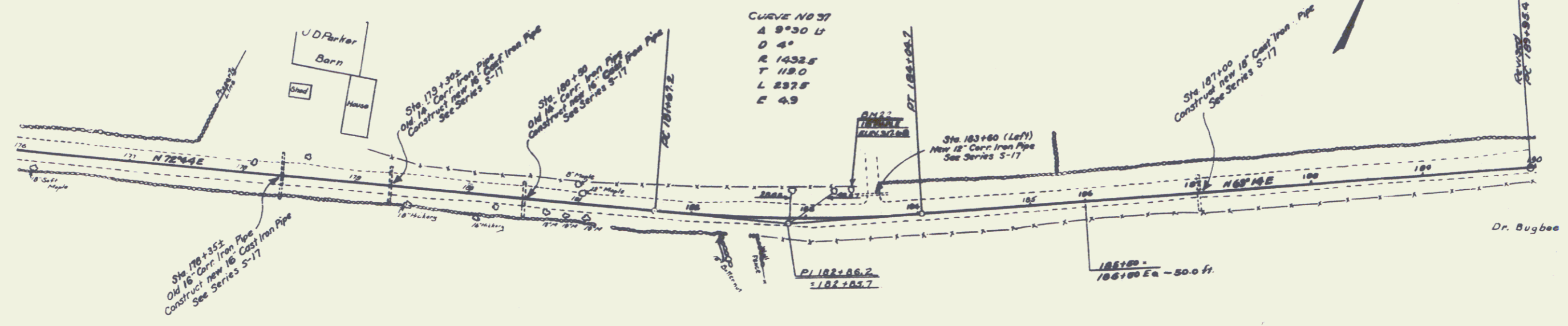


WOOD GUARD RAIL REQUIRED		NEW CULVERTS REQUIRED		DRIVEWAY CULVERTS REQUIRED	
ON RIGHT		ON LEFT		ON LEFT	
Sta. 178+23 to Sta. 178+47	24 lin. ft.	Sta. 178+35±	18" C.I.P. Culv.	40 lin. ft.	12" Corr. Iron Pipe 16 lin. ft.
179+18 "	179+42 24 "		Concrete Class B (1-2 1/2-5)	4.8 cu. yds	Conc. Class B (1-2 1/2-3) 1 cu. yd.
180+38 "	180+62 24 "		Reinforcing Steel	33 lbs	
186+88 "	187+12 24 "	Sta. 179+30±	16" Cast Iron Pipe Culv.	32 lin. ft.	
			Concrete Class B (1-2 1/2-5)	2.7 cu. yds	
ON LEFT			Reinforcing Steel	33 lbs.	
Sta. 178+23 to Sta. 178+47	24 lin. ft.	Sta. 180+30	16" Cast Iron Pipe Culv.	32 lin. ft.	
179+18 "	179+42 24 "		Concrete Class B (1-2 1/2-5)	2.7 cu. yds	
180+38 "	180+62 24 "		Reinforcing Steel	33 lbs.	
186+88 "	187+12 24 "	Sta. 187+00	18" Cast Iron Pipe	33 lin. ft.	
			Concrete Class B (1-2 1/2-5)	3.1 cu. yds	
			Reinforcing Steel	33 lbs	



B.M. #2 Spike in 18" Maple Left Sta. 183+40 ELEV. 317.68

15

14