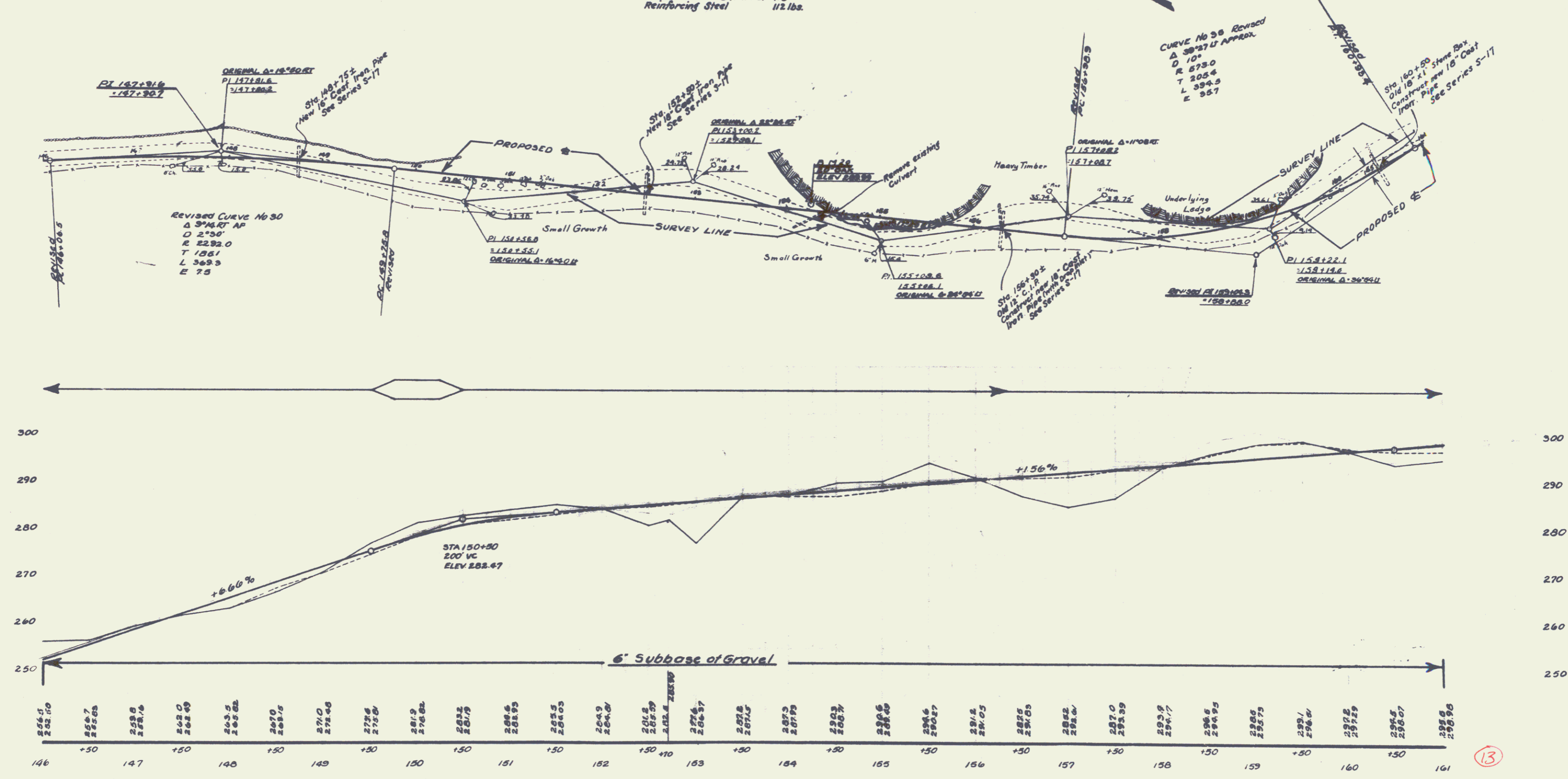


**WOOD GUARD RAIL REQUIRED**  
**ON LEFT**  
 Sta. 148+63 to Sta. 148+87 24 lin. ft.  
 " 152+38 " " 152+62 24 " "  
 " 158+18 " " 158+42 24 " "  
 " 160+38 " " 160+62 24 " "  
**ON RIGHT**  
 Sta. 148+63 to Sta. 148+87 24 lin. ft.

**CABLE GUARD RAIL REQUIRED**  
**ON RIGHT**  
 Sta. 152+00 to Sta. 154+00 200 lin. ft.  
 " 156+25 " " 158+25 200 " "  
 " 160+38 " " 161+00 62 " "

**NEW CULVERTS REQUIRED**  
 Sta. 148+75± 18" Cast Iron Pipe Culv. 32 lin. ft.  
 Conc. Class B (1-2 1/2-5) 2.7 cu. yds.  
 Reinforcing Steel 33 lbs.  
 Sta. 152+80± 18" Cast Iron Pipe Culv. 44 lin. ft.  
 Conc. Class B (1-2 1/2-5) 3.1 cu. yds.  
 Reinforcing Steel 33 lbs.  
 Sta. 156+30± 18" Cast Iron Pipe Culv. 40 lin. ft.  
 Conc. Class B (1-2 1/2-5) 3.3 lbs.  
 Sta. 160+50± 18" Cast Iron Pipe Culv. (with Drop Inlet) 40 lin. ft.  
 Concrete Class A (1-2-4) 1.5 cu. yds.  
 " B (1-2 1/2-5) 1.5 " "  
 Reinforcing Steel 112 lbs.

NO.	DATE	BY	SCALE	SHEET	TOTAL
85-6	1926	13		76	



BM#20 SPIKE IN 20' OAK ON LT. STA. 154+25 ELEV 289.99'