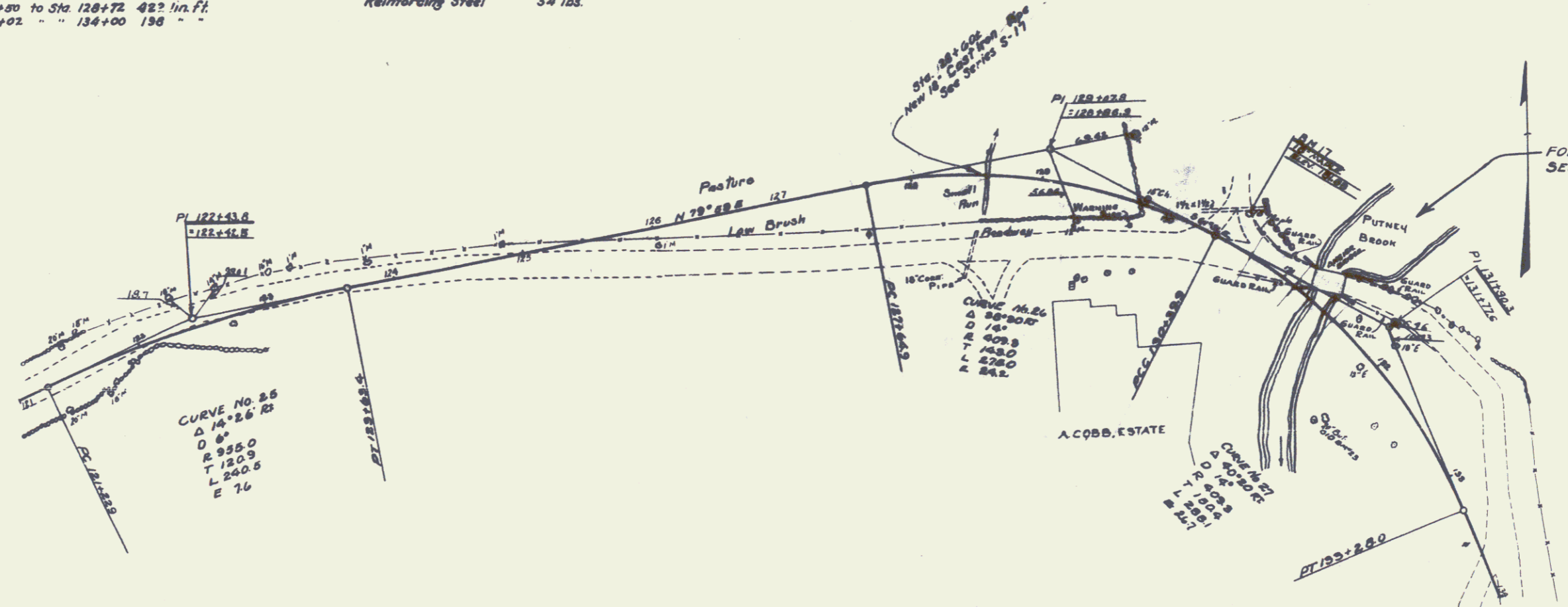


WOOD GUARD RAIL REQUIRED
ON RIGHT
Sta. 129+98 to Sta. 130+50 60 lin. ft.
" 128+48 " " 128+72 24 " "
ON LEFT
Sta. 129+00 to Sta. 130+50 72 lin. ft.

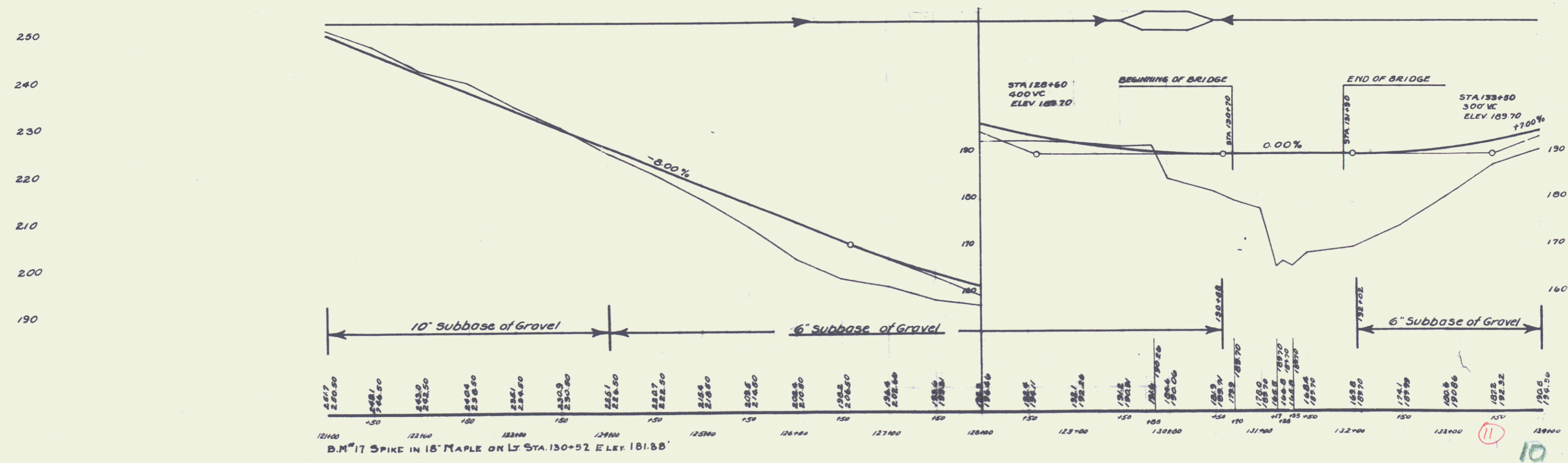
CABLE GUARD RAIL REQUIRED
ON RIGHT
Sta. 132+02 to Sta. 134+00 198 lin. ft.
ON LEFT
Sta. 129+50 to Sta. 128+72 422 lin. ft.
" 132+02 " " 134+00 198 " "

NEW CULVERTS REQUIRED
Sta. 128+80 ± 18" Cast Iron Pipe Cvt. 36 lin. ft.
Conc. Class A (1-2-4) 13 cu. yds
Reinforcing Steel 54 lbs.

FED. ROAD DIST. NO.	STATE	FED. AID PROJ. NO.	FISCAL YEAR	SHEET NO.	OF SHEETS
1-1	VT.	85-3	1968	17	76



FOR DETAIL OF BRIDGE
SEE SHEETS NO. 23, 24, 25, 26



B.M. #17 SPIKE IN 18" MAPLE ON LT. STA. 130+52 ELEV. 181.88'

10