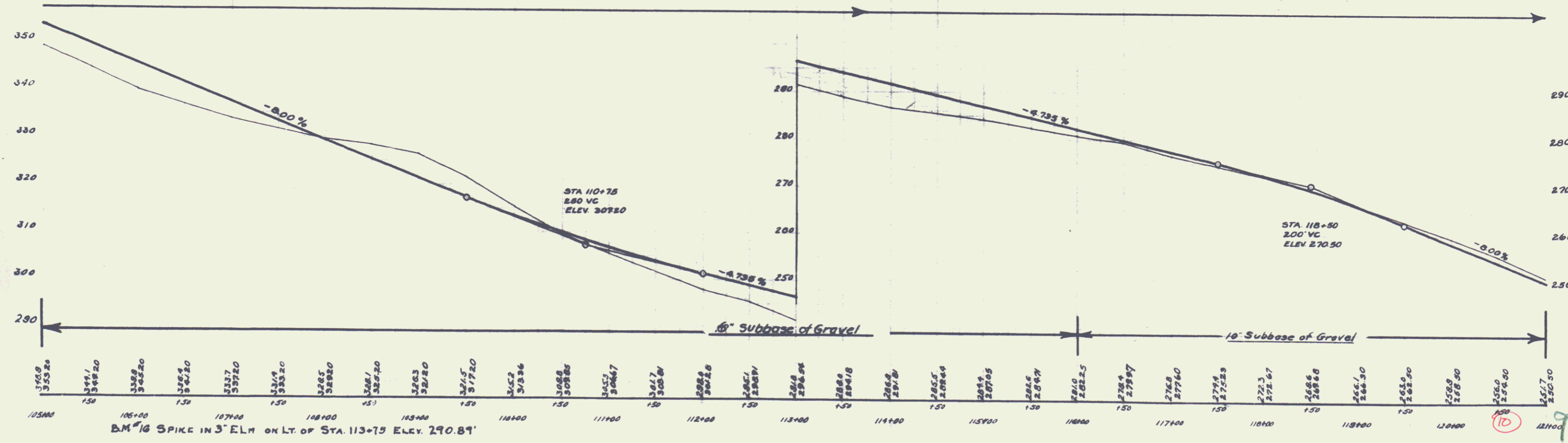
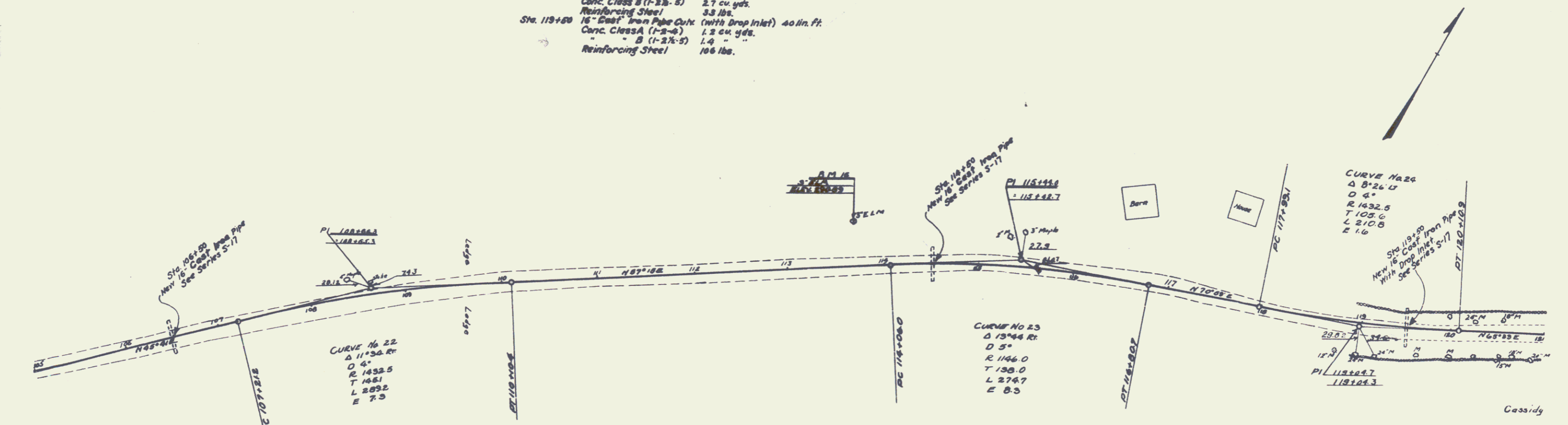


WOOD GUARD RAIL REQUIRED
 ON LEFT
 Sta. 106+38 to Sta. 106+62 24 lin. ft.
 118+82 " 119+82 80 " "
 ON RIGHT
 Sta. 113+38 to Sta. 113+62 24 lin. ft.

CABLE GUARD RAIL REQUIRED
 ON LEFT
 Sta. 113+26 to Sta. 114+62 136 lin. ft.
 ON RIGHT
 Sta. 105+00 to Sta. 106+62 164 lin. ft.
 " 112+75 " 114+75 200 " "

NEW CULVERTS REQUIRED
 Sta. 106+50 16" Cast Iron Pipe Culv. 36 lin. ft.
 Conc. Class B (1-2 1/2-5) 2.7 cu. yds.
 Reinforcing Steel 33 lbs.
 Sta. 114+50 16" Cast Iron Pipe Culv. 36 lin. ft.
 Conc. Class B (1-2 1/2-5) 2.7 cu. yds.
 Reinforcing Steel 33 lbs.
 Sta. 119+50 16" Cast Iron Pipe Culv. (with Drop Inlet) 40 lin. ft.
 Conc. Class A (1-2-8) 1.3 cu. yds.
 " B (1-2 1/2-5) 1.4 " "
 Reinforcing Steel 106 lbs.

STATE OF CALIFORNIA
 COUNTY OF SACRAMENTO
 PROJECT NO. 85-8
 YEAR 1988
 SHEET NO. 10
 TOTAL SHEETS 76



B.M. #16 SPIKE IN 3" ELM ON LT. OF STA. 113+75 ELEV. 290.89'