

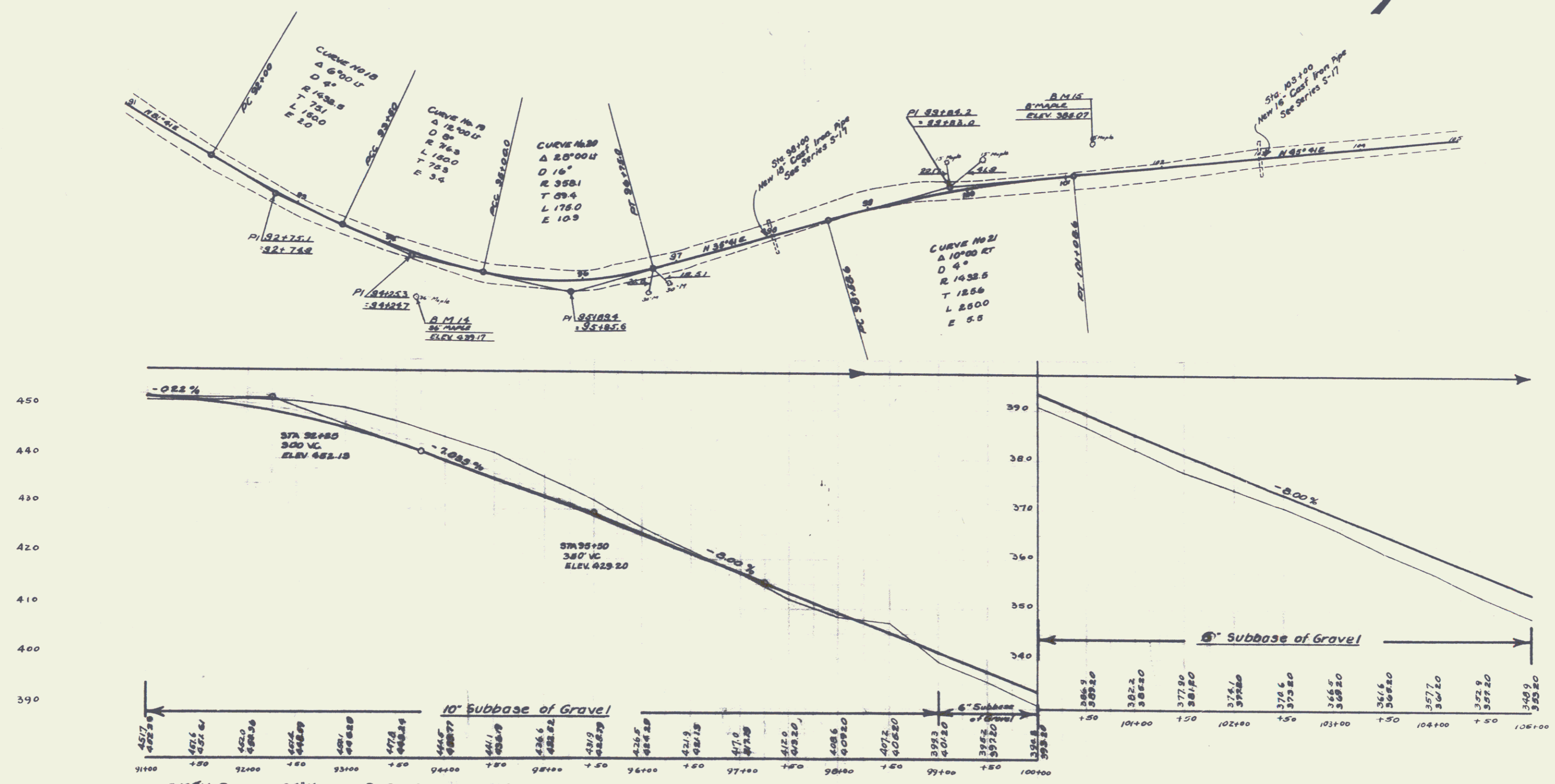
**WOOD GUARD RAIL REQUIRED**  
 ON LEFT  
 Sta. 102+00 to Sta. 103+12 24 lin. ft.  
 " 37+00 " " 98+12 24 " "  
 ON RIGHT  
 Sta. 102+00 to Sta. 103+12 24 lin. ft.  
 " 37+00 " " 98+12 24 " "

**CABLE GUARD RAIL REQUIRED**  
 ON RIGHT  
 Sta. 102+00 to Sta. 105+00 220 lin. ft.

**NEW CULVERTS REQUIRED**  
 Sta. 98+00 18" Coef. Iron Pipe Culv. 34 lin. ft.  
 Conc. Class B (1-2 1/2-5) 3.1 cu. yds.  
 Reinforcing Steel 33 lbs.  
 Sta. 103+00 18" Coef. Iron Pipe Culv. 36 lin. ft.  
 Conc. Class B (1-2 1/2-5) 2.7 cu. yds.  
 Reinforcing Steel 33 lbs.

J.F.M. 8-20

J.F.M. 3-20



B.M. 14 SPIKE IN 36" MAPLE ON RT STA 94+40 ELEV. 439.11'  
 B.M. 15 SPIKE IN 8" MAPLE ON LT STA 101+25 ELEV. 385.07'

(9)

8