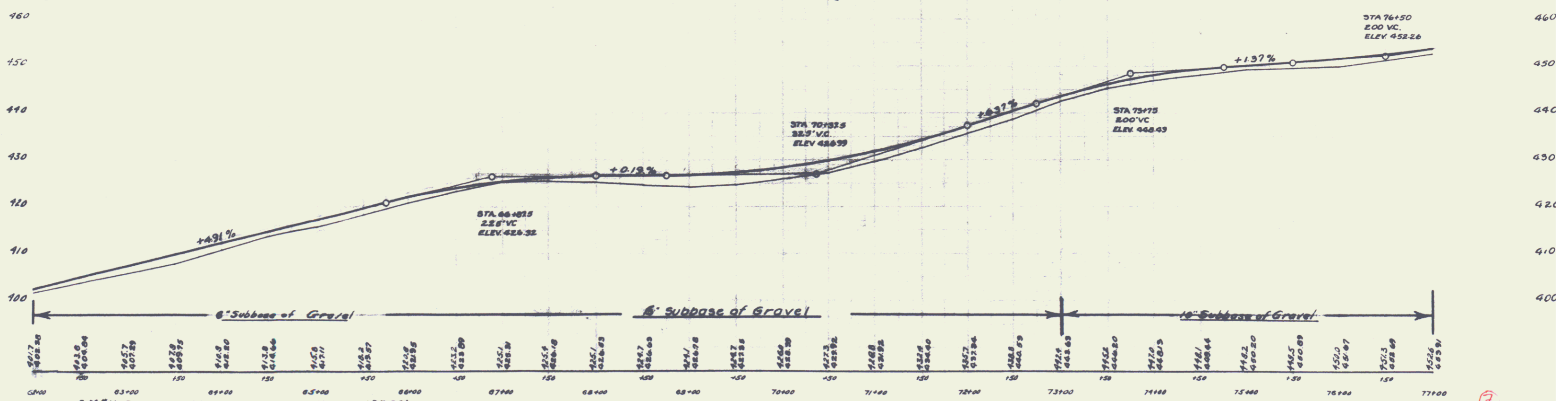
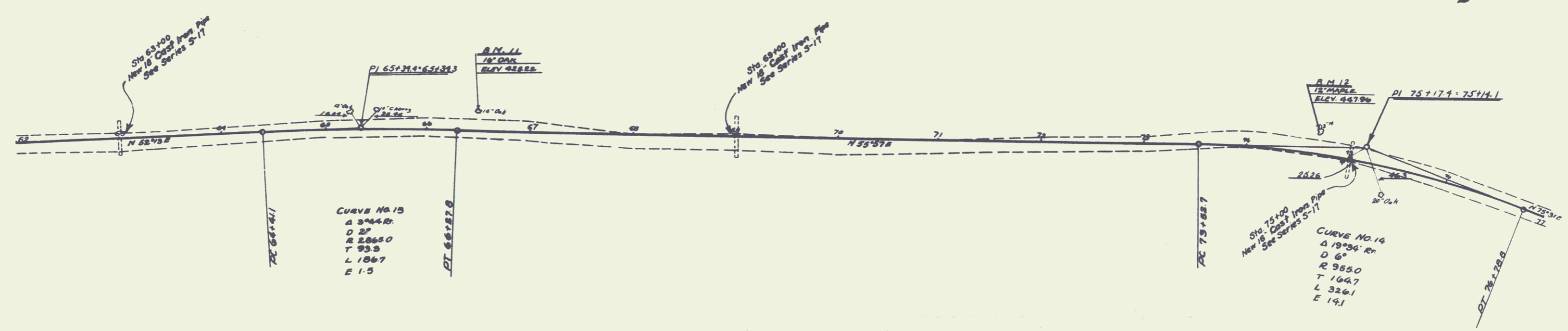


WOOD GUARD RAIL REQUIRED
 ON RIGHT
 Sta. 62+00 to Sta. 63+12 24 in. ft.
 " 68+00 " " 69+12 24 in. ft.
 " 74+04 " " 75+16 32 " "
 ON LEFT
 Sta. 62+00 to Sta. 63+12 24 in. ft.
 " 74+00 " " 75+12 24 " "

CABLE GUARD RAIL REQUIRED
 ON LEFT
 Sta. 67+75 to Sta. 69+75 200 in. ft.

NEW CULVERTS REQUIRED
 Sta. 63+00, 18" Cast Iron Pipe Culv. 34 in. ft.
 Conc. Class B (1-2 1/2-5) 3.1 cu. yds.
 Reinforcing Steel 33 lbs.
 Sta. 69+00, 18" Cast Iron Pipe Culv. 40 in. ft.
 Conc. Class B (1-2 1/2-5) 3.1 cu. yds.
 Reinforcing Steel 33 lbs.
 Sta. 75+00, 16" Cast Iron Pipe Culv. 36 in. ft.
 Conc. Class B (1-2 1/2-5) 2.7 cu. yds.
 Reinforcing Steel 33 lbs.

FED. ROAD DIST. NO.	STATE	PROJ. NO.	YEAR	SCALE	SHEET NO.	TOTAL SHEETS
		88-8	1928		7	76



B.M. #11 SPIKE IN 18" OAK ON LT. STA. 66+45 ELEV. 425.22'
 B.M. #12 SPIKE IN 12" MAPLE ON LT. STA. 74+65 ELEV. 447.96'

7
6