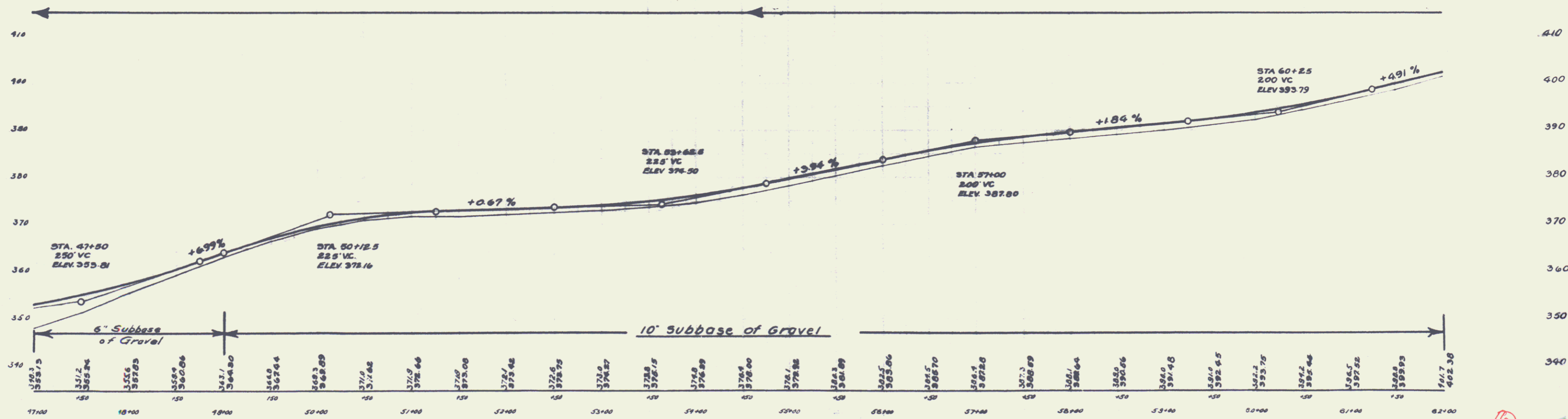
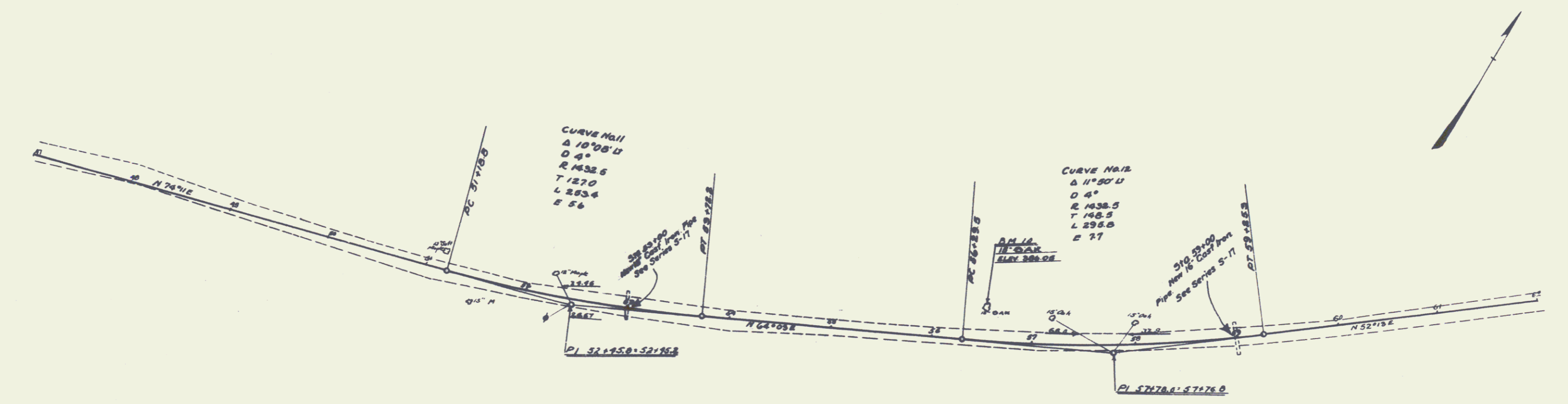


**WOOD GUARD RAIL REQUIRED**  
 ON RIGHT  
 Sta. 52+00 to Sta. 53+12 24 lin. ft.  
 " 58+00 " " 59+12 24 " "  
 ON LEFT  
 Sta. 52+00 to Sta. 53+12 24 lin. ft.  
 " 58+00 " " 59+12 24 " "

**CABLE GUARD RAIL REQUIRED**  
 ON RIGHT  
 Sta. 47+00 to Sta. 47+54 54 lin. ft.  
 ON LEFT  
 Sta. 47+00 to Sta. 47+54 54 lin. ft.

**NEW CULVERTS REQUIRED**  
 Sta. 53+00 18" Cast. Iron Pipe Culv. 34 lin. ft.  
 Conc. Class B (1-2 1/2-5) 3.1 cu. yds.  
 Reinforcing Steel 33 lbs.  
 Sta. 59+00 18" Cast. Iron Pipe Culv. 34 lin. ft.  
 Conc. Class B (1-2 1/2-5) 2.7 cu. yds.  
 Reinforcing Steel 33 lbs.



B.M. #10 SPIKE IN 15' OAK ON LT. STA. 56+50 ELEV. 386.05'

6  
5