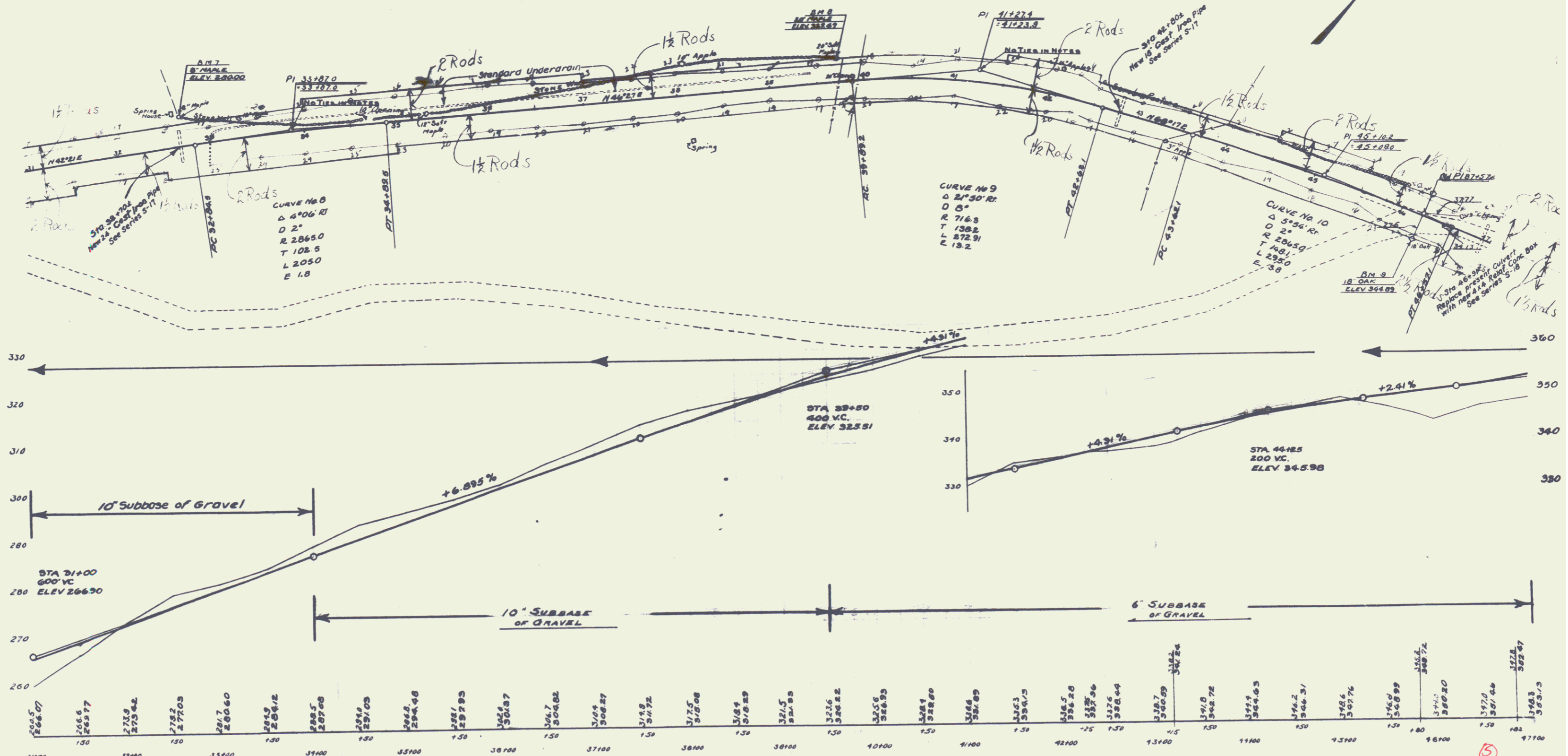


CABLE GUARD RAIL REQUIRED
 ON RIGHT
 Sta. 31+00 to Sta. 31+70 70 lin. ft.
 " 45+70 to " 47+00 130 " "
 ON LEFT
 Sta. 45+70 to Sta. 47+00 130 lin. ft.

WOOD GUARD RAIL REQUIRED
 ON RIGHT
 Sta. 32+58 to Sta. 32+82 24 lin. ft.
 " 42+68 " " 42+92 24 " "
 ON LEFT
 Sta. 32+58 to Sta. 32+82 24 lin. ft.
 " 42+68 " " 42+92 24 " "

NEW CULVERTS REQUIRED
 Sta. 32+70±, 24" Cast Iron Pipe Culv. 40 lin. ft.
 Concrete Class A (1-2-4) 2.6 cu. yds.
 Reinforcing Steel 54 lbs.
 Sta. 42+80±, 18" Cast Iron Pipe Culv. 36 lin. ft.
 Concrete Class B (1-2 1/2-4) 3.1 cu. yds.
 Reinforcing Steel 33 lbs.
 Sta. 46+91, 4x4 Reinf. Conc. Box Culv. 54 lin. ft.
 Concrete Class A (1-2-4) 31 cu. yds.
 Reinforcing Steel 2040 lbs.

STANDARD UNDERDRAIN REQUIRED (Series S-18)
 Sta. 33+00 to Sta. 39+50 (on left of &) 650 ft.
 " 33+00 from left to across road 35 " "
 Total 685 ft.



B.M.#7 SPIKE IN 8" MAPLE ON LT. OF STA. 32+75 ELEV. 280.00'
 B.M.#8 SPIKE IN 20" MAPLE ON LT. OF STA. 39+15 ELEV. 327.47'
 B.M.#9 SPIKE IN 18" OAK ON RT. OF STA. 46+20 ELEV. 344.84'