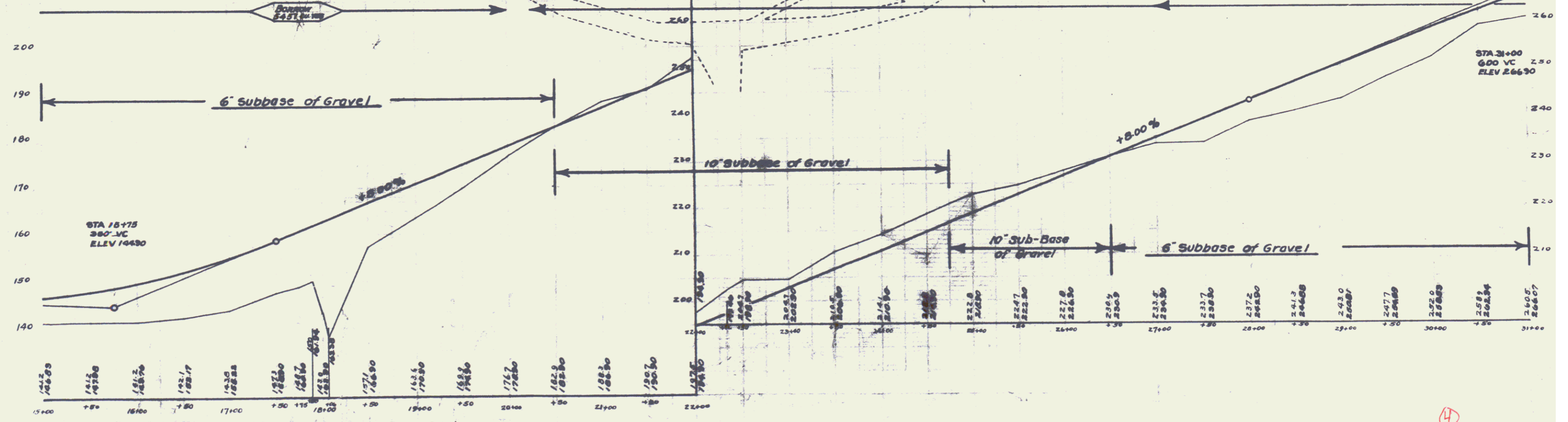
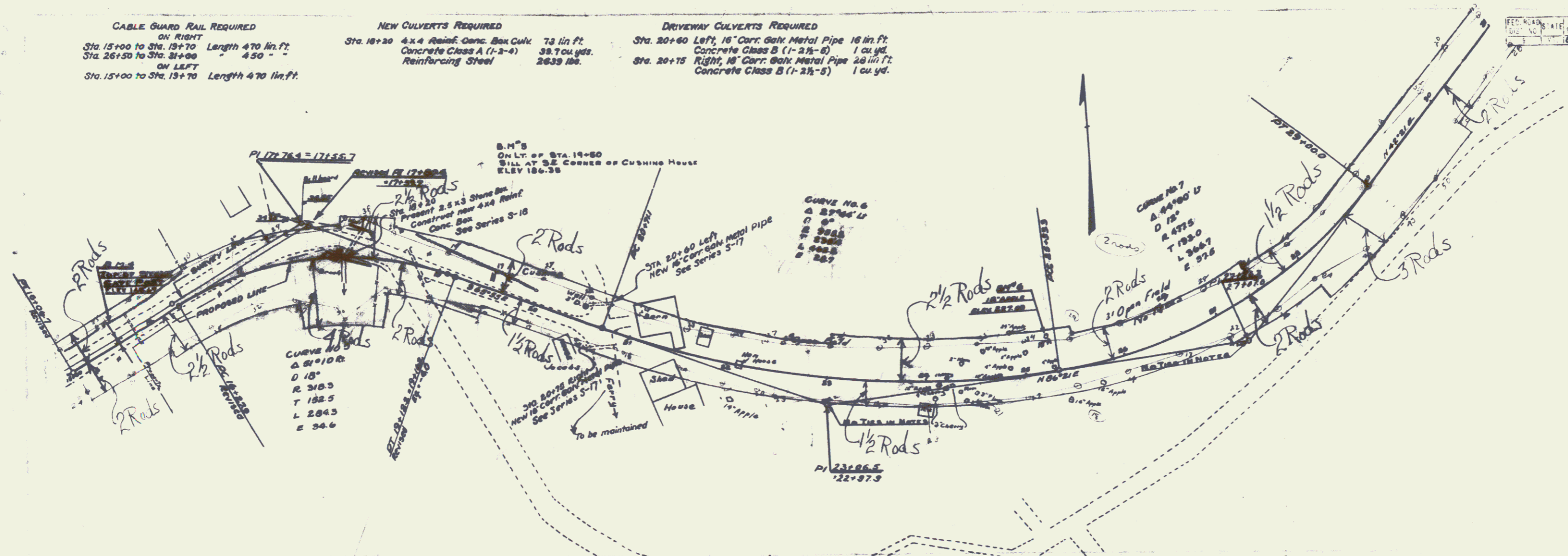


CABLE GUARD RAIL REQUIRED
 ON RIGHT
 Sta. 15+00 to Sta. 18+70 Length 470 lin. ft.
 Sta. 26+50 to Sta. 31+00 Length 450 " "
 ON LEFT
 Sta. 15+00 to Sta. 19+70 Length 470 lin. ft.

NEW CULVERTS REQUIRED
 Sta. 18+20 4x4 Rainf. Conc. Box Culv. 73 lin. ft.
 Concrete Class A (1-2-4) 39.7 cu. yds.
 Reinforcing Steel 2639 lbs.

DRIVEWAY CULVERTS REQUIRED
 Sta. 20+60 Left, 18" Corr. Galv. Metal Pipe 16 lin. ft.
 Concrete Class B (1-2 1/2-5) 1 cu. yd.
 Sta. 20+75 Right, 18" Corr. Galv. Metal Pipe 26 lin. ft.
 Concrete Class B (1-2 1/2-5) 1 cu. yd.

PROJECT NO.	DATE	SCALE	SHEET NO.	TOTAL SHEETS
85-6	1928	4	76	



B.M. 4 TOP OF STONE GATE PAST LEFT OF STA. 15+60 ELEV. 143.67'
 B.M. 5 SILL AT S.E. CORNER OF CUSHING HOUSE ON LT. OF STA. 17+50 ELEV. 186.35'
 B.M. 6 SPIKE IN 18' APPLE ON LT. OF STA. 25+25 ELEV. 227.54'

(4)

3