

INDEX OF SHEETS

SHEET NO.	TITLE PAGE
1	TYPICAL CROSS-SECTION OF IMPROVEMENT
2	BANKING AND WIDENING TABLES
3	PLAN AND PROFILE SHEETS
4	STANDARD STRUCTURE SHEET 5-28 Pipe Culv.
5	5-29 Box "
6	5-30 Guard Rail "
7	5-31 Boundary Markers
8	5-32 Barricades, Signs, & Lights
9	STANDARD STRUCTURE SHEETS

STANDARD STRUCTURE SHEETS APPROVED  
BY THE CHIEF ENGINEER  
5-28 & 5-29 ON JULY 11, 1933  
5-30 ON AUG. 15, 1933  
5-31 ON JULY 25, 1933

STATE OF VERMONT  
STATE HIGHWAY DEPARTMENT

PLAN AND PROFILE OF PROPOSED  
STATE HIGHWAY

EMERGENCY RELIEF PROJECT

TOWN OF SPRINGFIELD

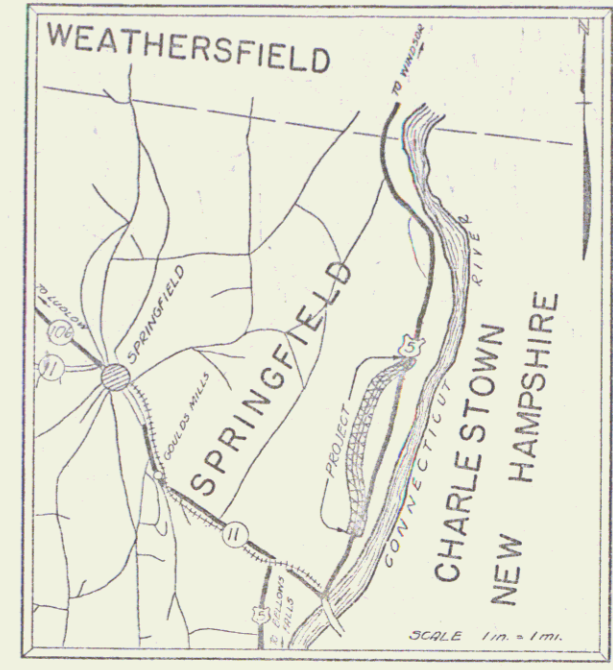
WINDSOR-BELLOWS FALLS ROAD

BEGINNING AT A POINT ABOUT 2.4 MILES SOUTH OF  
THE SPRINGFIELD-WEATHERSFIELD TOWN LINE AND  
EXTENDING SOUTHERLY 2.498 MILES.

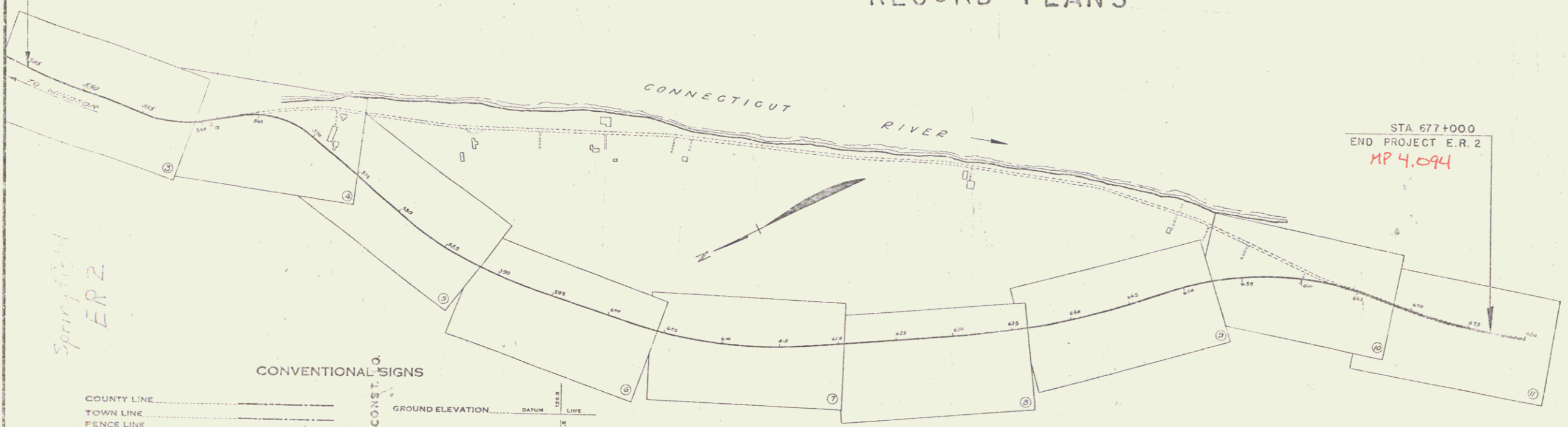
LENGTH OF PROJECT 13,192.5 FT. = 2.498 MI.

Route: US 5  
Project: ER 2  
Pin# 99R371

FED. ROAD DIST. NO.	STATE	PROJ. NO.	YEAR	SHEET NO.	TOTAL SHEETS
9	Vt.	2	1937	1	10



STA. 545+00.0  
BEGIN PROJECT E.R. 2  
MP 6.594



STA 677+000  
END PROJECT E.R. 2  
MP 4.094

RIGHT-OF-WAY DIVISION  
TOWN FILE  
PERPETUAL  
Town of US 5  
(To Be Returned To R.O.W. Division)

APPROVED: Feb 5, 1937  
H. H. ...  
COMMISSIONER OF HIGHWAYS  
SUBMITTED BY ORDER OF THE STATE HIGHWAY BOARD

- CONVENTIONAL SIGNS
- COUNTY LINE
  - TOWN LINE
  - FENCE LINE
  - STONE WALL
  - UNFENCED PROPERTY
  - GUARD RAIL
  - TRAVELED WAY
  - RAILROAD
  - RETAINING WALL
  - CENTER LINE
  - SURVEY LINE
  - CULVERT
  - DROP INLET
  - TROLLEY POLE
  - POWER POLE
  - TELEPHONE POLE
  - TREES
  - HEDGE
- CURVE DATA
- DEFLECTION ANGLE
  - DEGREE OF CURVE
  - RADIUS OF CURVE
  - TANGENT DISTANCE
  - EXTERNAL DISTANCE
  - POINT OF INTERSECTION
  - POINT OF CURVE
  - POINT OF TANGENT
  - POINT ON TANGENT

SCALES

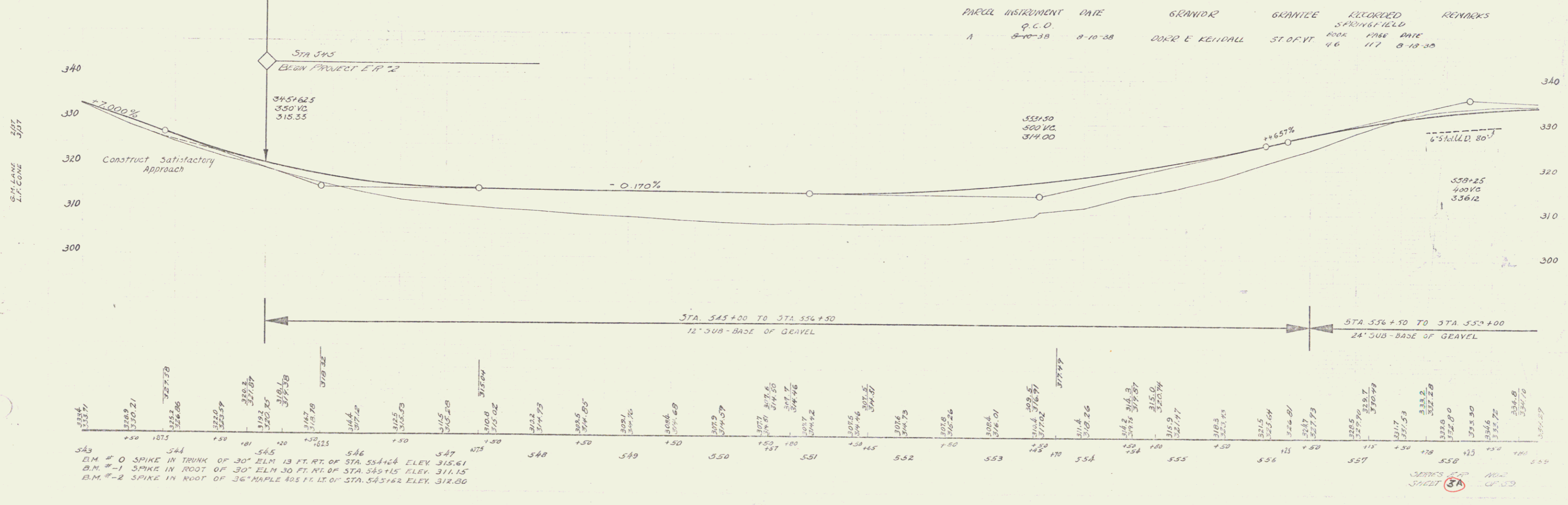
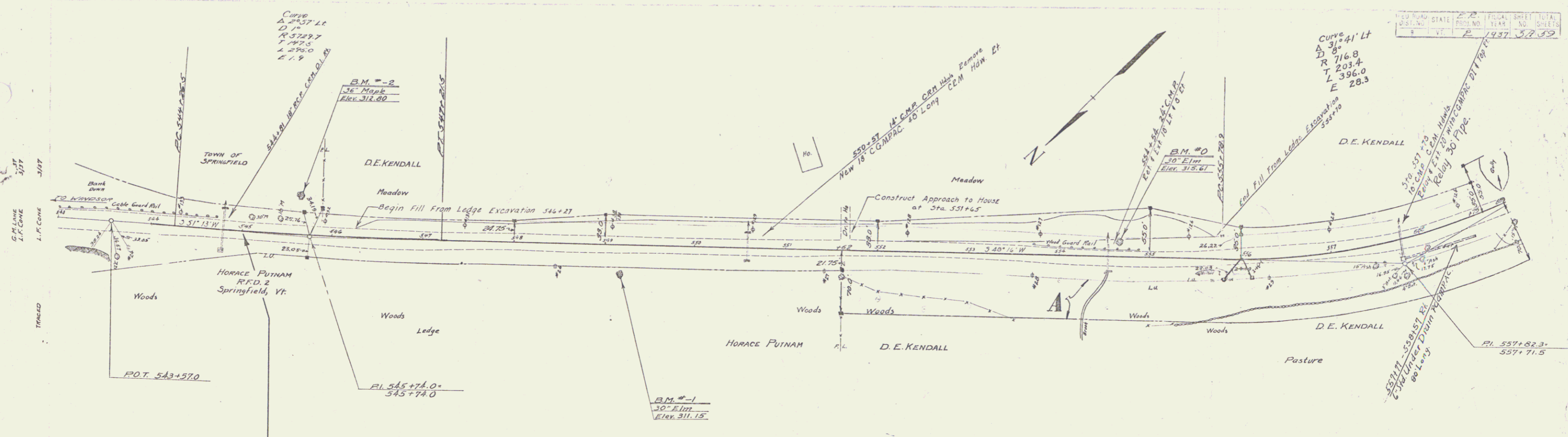
TITLE	1 IN. = 500 FT.
TYPICAL	1 IN. = 2 FT.
PLAN	1 IN. = 50 FT.
PROFILE	1 IN. = 10 FT.
CROSS SECTIONS	1 IN. = 5 FT.

These plans are subject to such revisions as may be required by the Bureau of Public Roads or the Commissioner of Highways.  
Construction is to be carried on in accordance with the plans and Standard Road and Bridge Specifications of 1936 as approved Dec. 20, 1936 by the Bureau of Public Roads, with all subsequent approved revisions and such revised specifications and special provisions as are submitted with the plans.

APPROVED: Feb 5, 1937  
H. H. ...  
ROAD ENGINEER

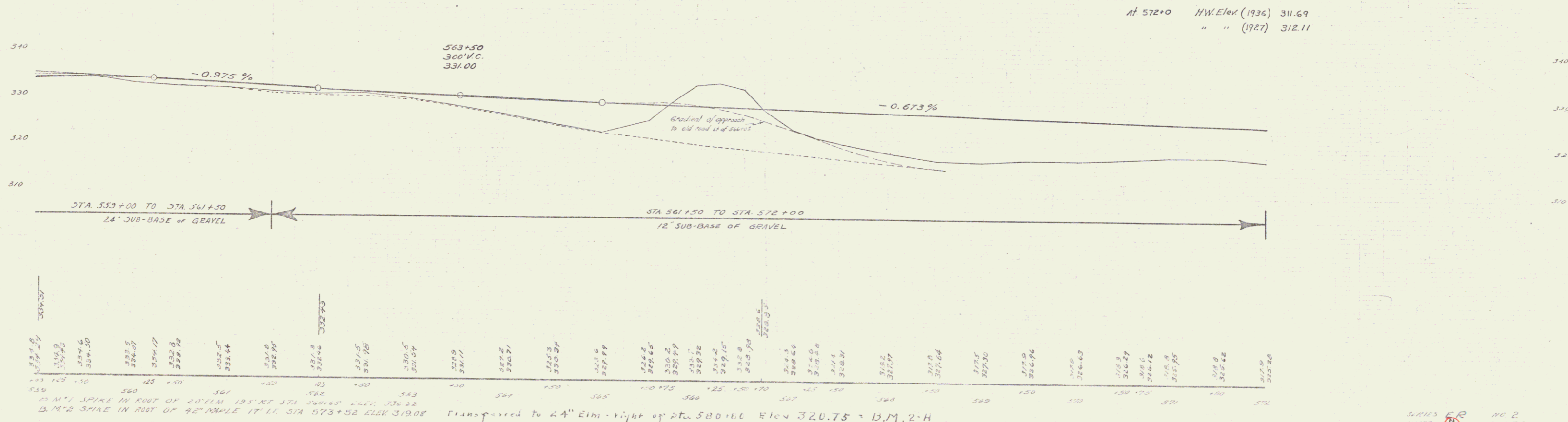
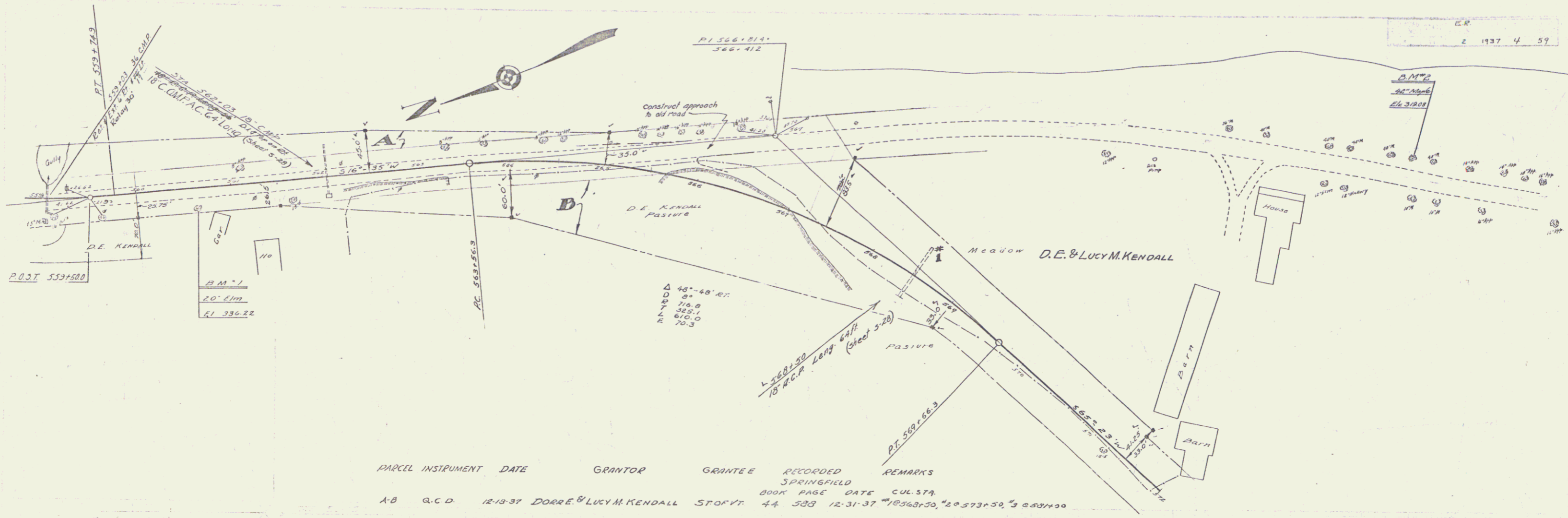
SERIES E.R. NO. 2  
SHEET 1 OF 10

DIST. #2 PLANS



STA. 543 TO STA. 557  
 12" SUB-BASE OF GRAVEL  
 STA. 556 TO STA. 557  
 24" SUB-BASE OF GRAVEL

543  
 E.M. # 0 SPIKE IN TRUNK OF 30" ELM. 13 FT. RT. OF STA. 544+64 ELEV. 315.61  
 B.M. # 1 SPIKE IN ROOT OF 30" ELM. 30 FT. RT. OF STA. 545+15 ELEV. 311.15  
 B.M. # 2 SPIKE IN ROOT OF 36" MAPLE 405 FT. LT. OF STA. 545+62 ELEV. 312.80



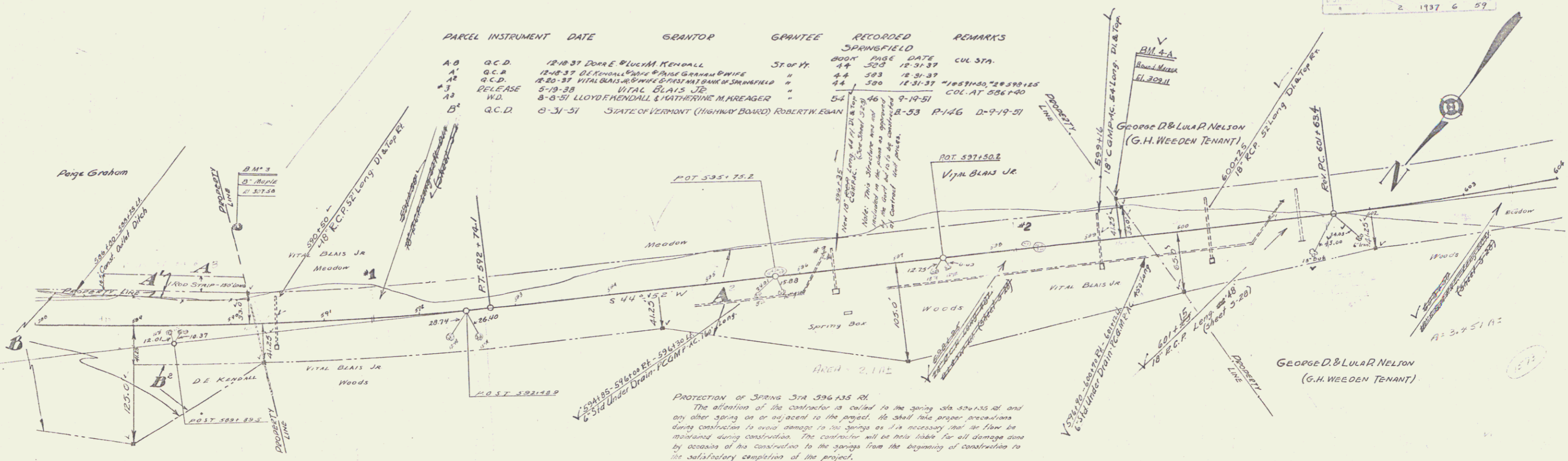
D.M.'s SPIKE IN FOOT OF 20' LIM 195' RT STA 571+52 ELEV 336.22  
 D.M.'s SPIKE IN FOOT OF 42" APPLE 17' LT STA 573+52 ELEV 319.08  
 Transferred to 24" Elm. Right of Pt. 580+00 Elev 320.75 - D.M. 2-H



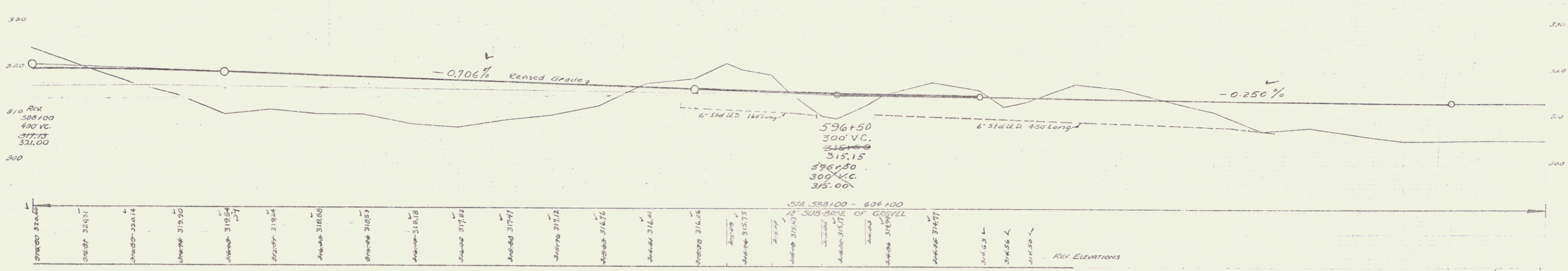
2 1937 6 59

PARCEL INSTRUMENT DATE GRANTOR GRANTEE RECORDED SPRINGFIELD REMARKS

ST. OF PT.	BOOK	PAGE	DATE	CUL. STA.
A <sup>0</sup>	G.C.D.	12-18-37	DORR E. BLUMH. KENOLL	500
A <sup>1</sup>	G.C.D.	12-18-37	DORR E. BLUMH. KENOLL	500
A <sup>2</sup>	G.C.D.	12-18-37	DORR E. BLUMH. KENOLL	500
A <sup>3</sup>	RELEASE	5-19-38	VITAL BLAIS JR	500
A <sup>4</sup>	W.D.	8-8-51	LLOYD FRENDAHL & MATHIEPINE M. FREAGER	500
B <sup>1</sup>	G.C.D.	8-31-51	STATE OF VERMONT (HIGHWAY BOARD)	ROBERT W. EBAN



Protection of Spring Sta 596+35.00  
 The attention of the contractor is called to the spring sta 596+35.00 and any other spring on or adjacent to the project. He shall take proper precautions during construction to avoid damage to the springs as it is necessary that the flow be maintained during construction. The contractor will be held liable for all damage done by occasion of his construction to the springs from the beginning of construction to the satisfactory completion of the project.

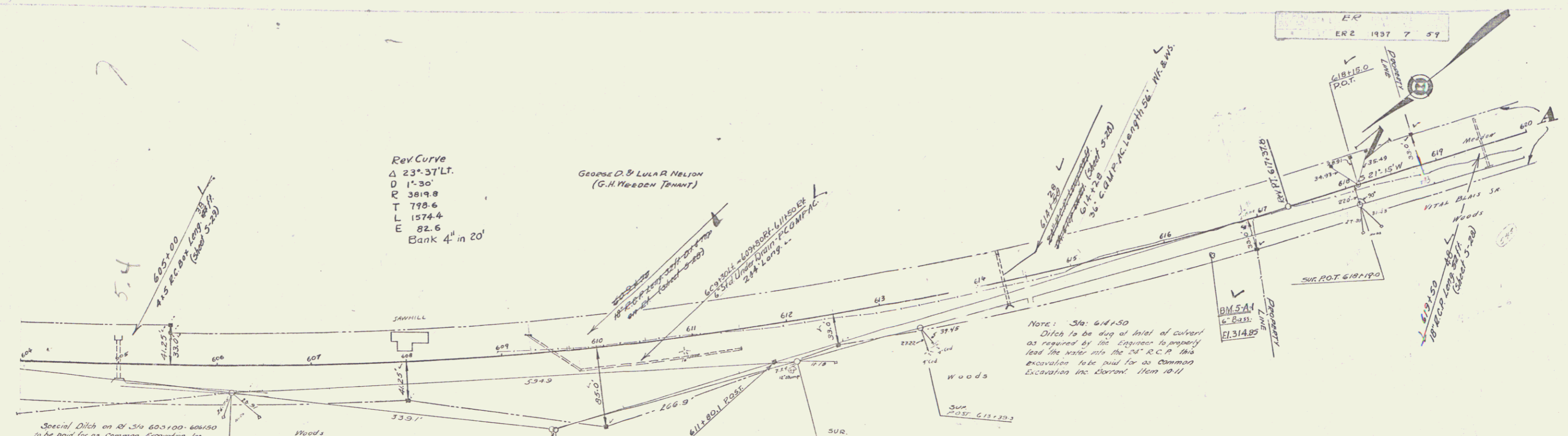


STATION	ELEVATION
596+00	315.00
596+10	315.00
596+20	315.00
596+30	315.00
596+40	315.00
596+50	315.15
596+60	315.15
596+70	315.15
596+80	315.15
596+90	315.15
597+00	315.15
597+10	315.15
597+20	315.15
597+30	315.15
597+40	315.15
597+50	315.15
597+60	315.15
597+70	315.15
597+80	315.15
597+90	315.15
598+00	315.15
598+10	315.15
598+20	315.15
598+30	315.15
598+40	315.15
598+50	315.15
598+60	315.15
598+70	315.15
598+80	315.15
598+90	315.15
599+00	315.15
599+10	315.15
599+20	315.15
599+30	315.15
599+40	315.15
599+50	315.15
599+60	315.15
599+70	315.15
599+80	315.15
599+90	315.15
600+00	315.15
600+10	315.15
600+20	315.15
600+30	315.15
600+40	315.15
600+50	315.15
600+60	315.15
600+70	315.15
600+80	315.15
600+90	315.15
601+00	315.15
601+10	315.15
601+20	315.15
601+30	315.15
601+40	315.15
601+50	315.15
601+60	315.15
601+70	315.15
601+80	315.15
601+90	315.15
602+00	315.15
602+10	315.15
602+20	315.15
602+30	315.15
602+40	315.15
602+50	315.15
602+60	315.15
602+70	315.15
602+80	315.15
602+90	315.15
603+00	315.15
603+10	315.15
603+20	315.15
603+30	315.15
603+40	315.15
603+50	315.15
603+60	315.15
603+70	315.15
603+80	315.15
603+90	315.15
604+00	315.15
604+10	315.15
604+20	315.15
604+30	315.15
604+40	315.15
604+50	315.15
604+60	315.15
604+70	315.15
604+80	315.15
604+90	315.15
605+00	315.15
605+10	315.15
605+20	315.15
605+30	315.15
605+40	315.15
605+50	315.15
605+60	315.15
605+70	315.15
605+80	315.15
605+90	315.15
606+00	315.15
606+10	315.15
606+20	315.15
606+30	315.15
606+40	315.15
606+50	315.15
606+60	315.15
606+70	315.15
606+80	315.15
606+90	315.15
607+00	315.15
607+10	315.15
607+20	315.15
607+30	315.15
607+40	315.15
607+50	315.15
607+60	315.15
607+70	315.15
607+80	315.15
607+90	315.15
608+00	315.15

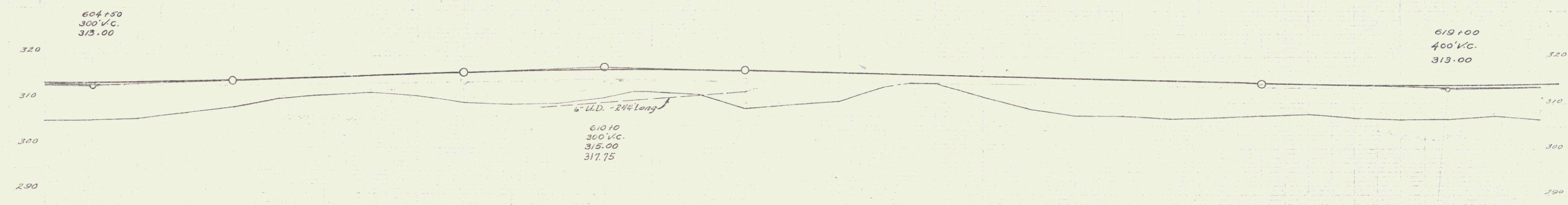
B.M. 3 1/4\"/>

5 59

Buttlet  
Boring  
1946



INSTRUMENT	DATE	GRANTOR	GRANTEE	RECORDED BOOK	BASE DATE	REMARKS
A ADMIN DEED	12-30-37	VITAL BLAIS SR ESTATE	STAY FR	44	390	12-31-37
A O.C.D.	12-30-37	ANNIE L. PUTMAN (MORTGAGE)	"	44	382	12-31-37



STA. 604+00 TO STA 620+00  
12" SUB-BASE OF GRAVEL

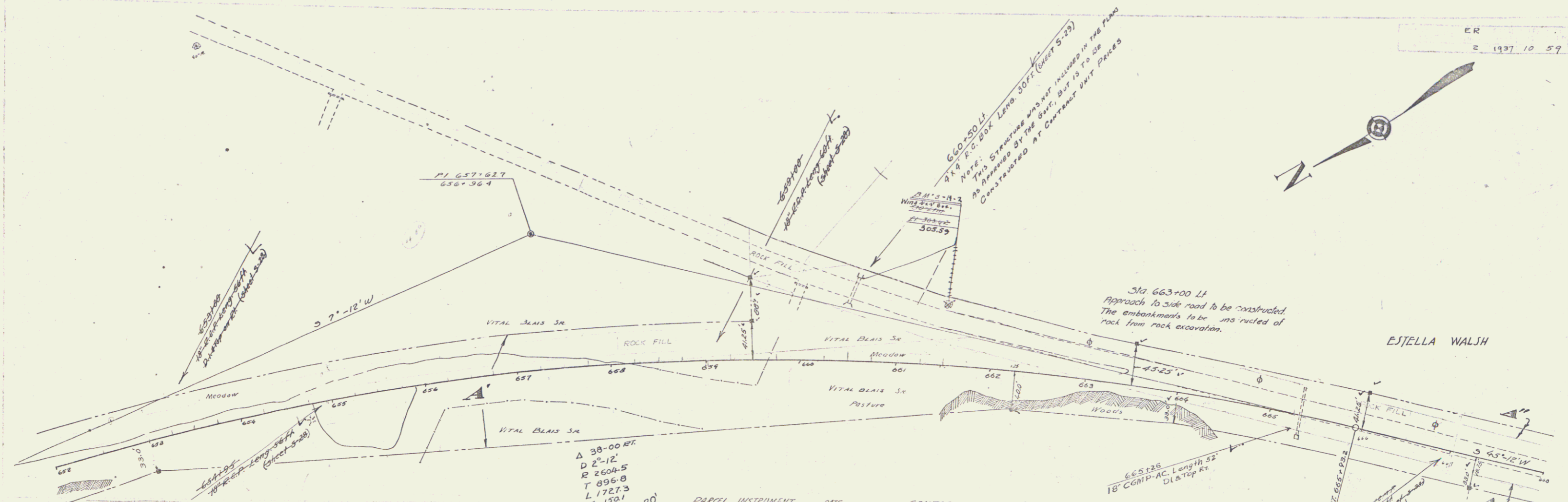
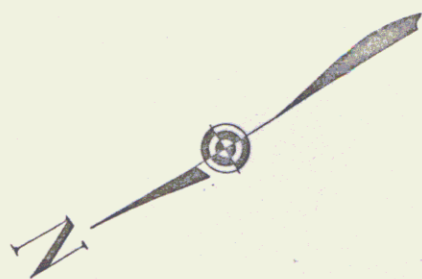
STATION	ELEVATION
604+50	313.22
605+00	313.42
605+50	313.62
606+00	313.91
606+50	314.30
607+00	314.73
607+50	315.16
608+00	315.59
608+50	315.80
609+00	316.02
609+50	316.46
610+00	316.83
610+25	317.01
610+50	317.23
610+75	317.26
611+00	317.16
611+25	316.96
611+50	316.69
611+75	316.48
612+00	316.17
612+25	315.90
612+50	315.64
613+00	315.37
613+25	315.11
613+50	314.85
614+00	314.59
614+25	314.32
614+50	314.05
615+00	313.82
615+25	313.65
615+50	313.54
616+00	313.49
616+25	313.51
616+50	313.57

610  
SERIALS ER NO 2  
SHEET 7 OF 59





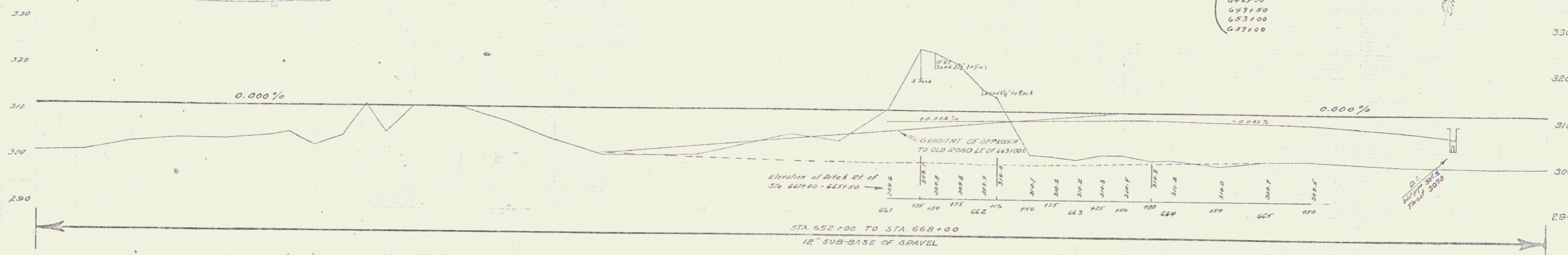
ER  
= 1937 10 59



NOTE -- Sta 651+50 - 674+50 LT  
Beginning at Sta 651+00 LT the outer four feet of fill is to be made from rock encountered in excavation on the project. This rock fill shall be made full height as shown on Typical Section

Δ 38-00 R.P.  
D 2°-12'  
R 2604.5  
T 896.8  
L 1727.3  
E 150.1  
Bank 6" in 20'

PARCEL	INSTRUMENT	DATE	GRANTOR	GRANTEE	RECORDED	REMARKS
A	G.C.D.	3-19-37	DIAMOND MATCH CO	STONFIELD	602	619+50
A'	ADMIN. DEV.	12-30-37	VITAL BLAIS SR ESTATE	"	44	622+00
A"	W.D.	12-20-37	ESTELLA WALSH	"	44	624+50
					44	628+50
					44	632+50
					44	636+50
					44	640+50
					44	644+50
					44	648+50
					44	652+50
					44	656+50
					44	660+50
					44	664+50
					44	668+50

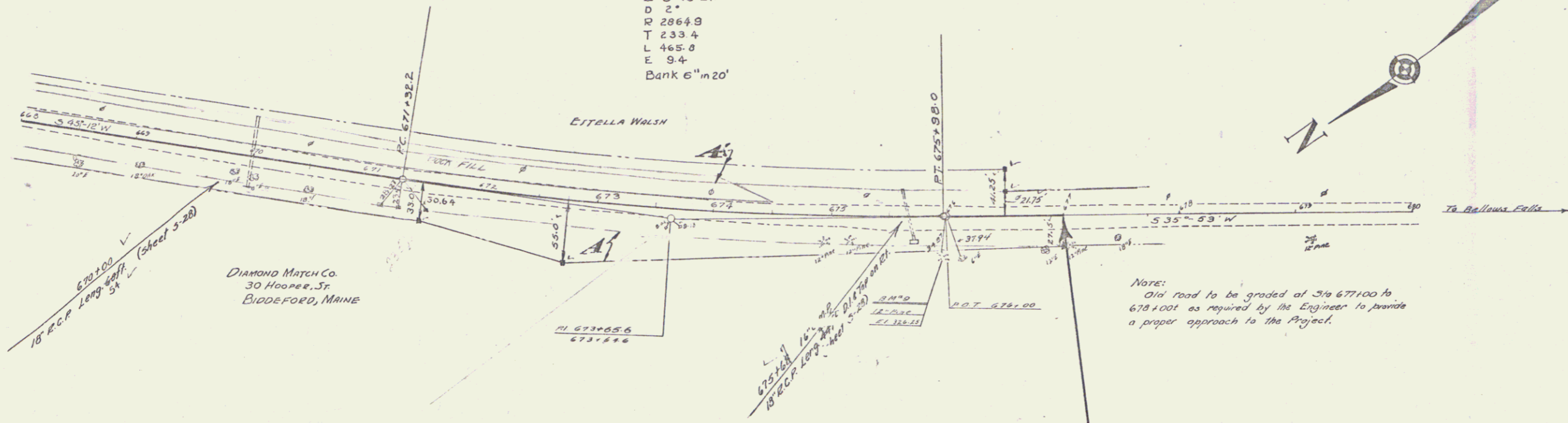


STATION	ELEVATION	STATION	ELEVATION	STATION	ELEVATION	STATION	ELEVATION
652	312.00	653	311.00	654	310.00	655	309.00
656	308.00	657	307.00	658	306.00	659	305.00
660	304.00	661	303.00	662	302.00	663	301.00
664	300.00	665	299.00	666	298.00	667	297.00
668	296.00						

BH 8-A-7. Spot on Lt. Wing of 4x4 R.C. Box 660+50 Lt. Elev. 304.59 V

12711 ER NO 12  
SHEET 10 OF 59

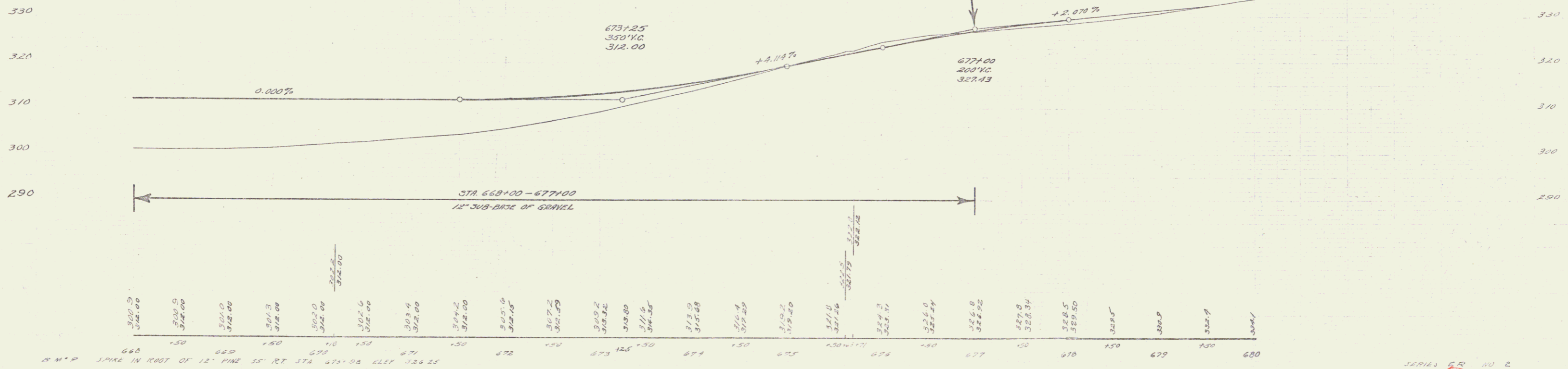
Δ 0°-10 Lt  
 D 2"  
 R 2864.9  
 T 233.4  
 L 465.0  
 E 9.4  
 Bank 6"m20'



Note:  
 Old road to be graded at Sta 677+00 to 678+00 as required by the Engineer to provide a proper approach to the Project.

STA. 677+00  
 END OF PROJECT E.R. 2

PARCEL	INSTRUMENT	DATE	GRANTOR	GRANTEE	RECORDED	REMARKS
A	O.C.D.	3-19-37	DIAMOND MATCH CO.	S.F.O.P.R.	SPRINGFIELD	49 445 4-2937
A'	M.D.	12-29-37	ESTELLA WALSH	"	44 597 12-3137	670+00



2" N.P. SPIKE IN ROOT OF 12" PINE 55' RT. STA. 671+00 ELEV. 326.25

