

- INDEX OF SHEETS**
1. TITLE SHEET
 2. TYPICAL CROSS SECTION of IMPROVEMENT
3" Bituminous Concrete Pavement, Item 361-B, Mod.
 3. DRAINAGE AND ITEM QUANTITY SHEET
 4. EARTHWORK SHEET
 - 5-8. LAYOUT and PROFILE SHEETS
 9. B-1 BANKING TABLES
 10. B-5 TYPICAL SLOPE GRADING
 11. D-2 HEADWALLS
 12. D-3 JUTE MATTING
 13. D-4 FLUSHING BASINS
 14. D-6 OROP INLETS
 15. E-1 HARRICADED SIGNS & LIGHTS
 16. E-3 CONSTRUCTION IDENTIFICATION SIGNS
 17. G-3 THREE CABLE GUARD RAIL
 18. G-4 PLATE GUARD RAIL
 19. J-1 PROJECT AND BOUNDARY MARKERS
 20. BLANK
 - 21-28. CROSS SECTIONS

STATE OF VERMONT
DEPARTMENT OF HIGHWAYS
PROPOSED IMPROVEMENT

TOWN OF SPRINGFIELD
COUNTY OF WINDSOR
U.S. ROUTE 5

WHITE RIVER JCT. - BELLOWS FALLS ROAD

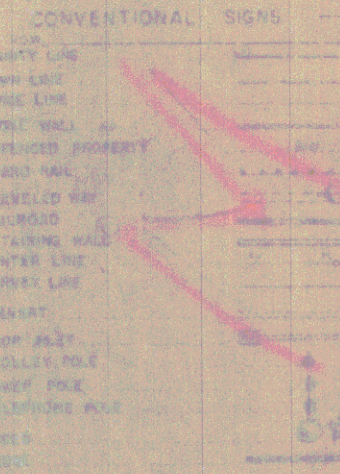
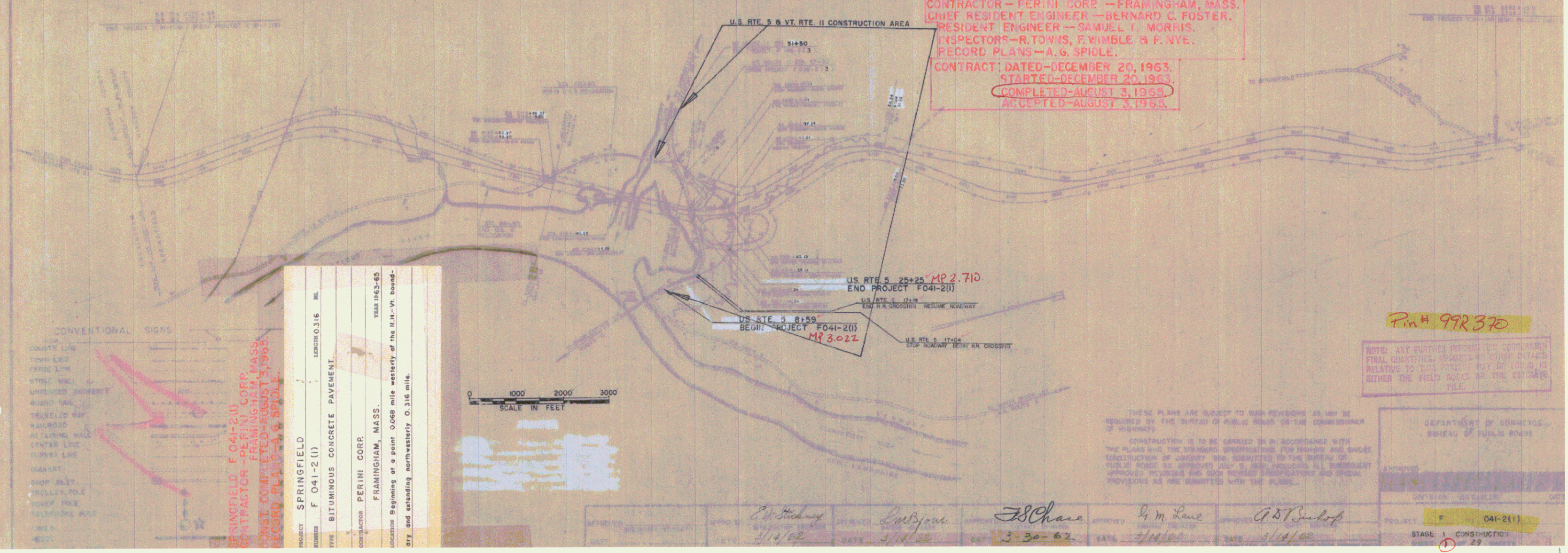
BEGINNING AT A POINT 0.068 MILE WESTERLY OF THE NH.-VT. BOUNDARY AND EXTENDING NORTHWESTERLY 0.316 MILE.
LENGTH OF ROADWAY 1652 FEET = 0.313 MILE
LENGTH OF RR CROSSING 14 FEET = 0.003 MILE
LENGTH OF PROJECT 1666 FEET = 0.316 MILE

DOT 1958	1400
DOT 1975 (EST)	2340
DIV 1975	339
D	58%
T	-4 1/2%
V	50

PROJECT NAME & NUMBER TYPE PAVEMENT AREA
SPRINGFIELD F041-2(1) BIT. CONC. PAVT. 3640 S.Y.
RECORD PLANS
MATERIALS

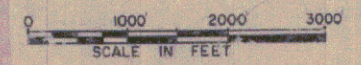
SUBBASE OF GRAVEL - WEIRZICKI PIT - CHARLESTOWN, N.H.
SUBBASE OF SAND - HOWE PIT - SPRINGFIELD, VT.
SUBBASE OF CRUSHED ROCK - PADDOCK QUARRY - SPRINGFIELD, VT.
GRAVEL BACKFILL - FISK PIT - CHARLESTOWN, N.H.
PLANT MIXED CRUSHED GRAVEL BASE COURSE - L.M. FIKS (PLANT) - WEST LEBANON, N.H.
CRUSHED STONE SHOULDERS - PADDOCK QUARRY - SPRINGFIELD, VT.
PEA STONE & STONE CRITS - BASSO QUARRY (PERINI CRUSHER) - SPRINGFIELD, VT.
REFINED TAR - WITCO CHEMICAL CO. - CAMBRIDGE, MASS.
ASPHALT - HUMBLE OIL & REFINING CO. - EVERETT, MASS.
BITUMINOUS CONCRETE PAVEMENT - L.M. FIKS (PLANT) - WEST LEBANON, N.H. & COLD RIVER HOT MIX - NEWALPOLE, N.H.
CONCRETE CLASS 'B' - CHARLESTOWN READY MIX INC. - CHARLESTOWN, N.H.
REINFORCING STEEL - BETHLEHEM STEEL CO. - ALBANY, N.Y.
REINFORCED CONCRETE PIPE - HUME PIPE OF NEW ENGLAND INC. - WINDSOR, VT.
METAL PIPE CULVERTS - NORTHEASTERN CULVERT CORP. - WESTMINSTER, VT.
THREE CABLE GUARD RAIL W/ STEEL POSTS, WOOD GUIDE & STEEL MARKER POSTS - S.T. GRISWOLD & CO., INC. - WILLISTON, VT.
JUTE MATTING - BELTON BAGGING CO. - FARMINGTON, ME.
CONTRACTOR - PERINI CORP. - FRAMINGHAM, MASS.
CHIEF RESIDENT ENGINEER - BERNARD C. FOSTER.
RESIDENT ENGINEER - SAMUEL T. MORRIS.
INSPECTORS - R. TOWNS, F. WIMBLE & F. NYE.
RECORD PLANS - A. G. SPIDLE.

CONTRACT DATED - DECEMBER 20, 1963.
STARTED - DECEMBER 20, 1963.
COMPLETED - AUGUST 3, 1965.
ACCEPTED - AUGUST 3, 1965.



SPRINGFIELD F041-2(1)
CONTRACTOR - PERINI CORP., FRAMINGHAM, MASS.
CONST. COMPLETED - AUGUST 3, 1965.
RECORD PLANS - A. G. SPIDLE.

PROJECT SPRINGFIELD
NUMBER F 041-2(1)
LENGTH 0.316 MI.
TYPE BITUMINOUS CONCRETE PAVEMENT.
CONTRACTOR PERINI CORP.
FRAMINGHAM, MASS.
Location Beginning at a point 0.068 mile westerly of the N.H.-Vt. boundary and extending northwesterly 0.316 mile.



Pin# 99R370

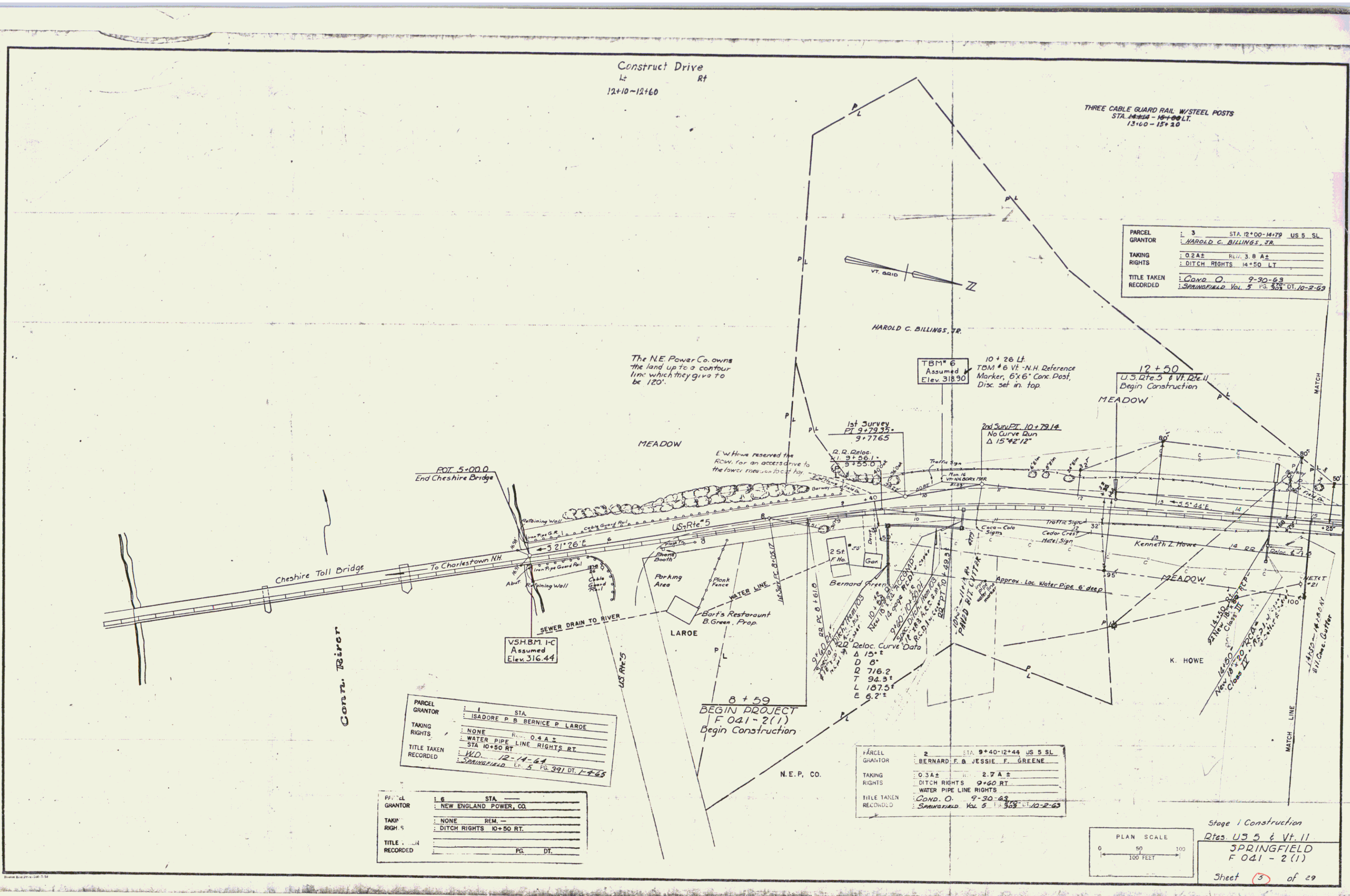
NOTE: ANY FURTHER REVISIONS TO CORRECTING FINAL QUANTITIES SHOWN IN OTHER DETAILS RELATIVE TO THIS PROJECT MAY BE OBTAINED EITHER THE FIELD BOOKS OR THE CONTRACT FILE.

APPROVED: *C. W. Stearns* 3/14/62
DATE: 3/14/62
APPROVED: *L. M. Lane* 3-30-62
DATE: 3/14/62
APPROVED: *F. S. Chase*
DATE: 3/14/62
APPROVED: *G. M. Lane*
DATE: 3/14/62
APPROVED: *A. D. Burhop*
DATE: 3/14/62

DEPARTMENT OF HIGHWAYS
BUREAU OF PUBLIC ROADS

PROJECT: F 041-2(1)
STAGE: 1 CONSTRUCTION
PAGE: 29

Plan	By	Date
Surveyed	Ensign	8/63
Plotted	Ensign	3/60
Checked	Ensign	2/67

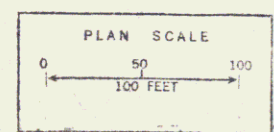


PARCEL	3	STA. 12+00-14+79	US S. SL.
GRANTOR	HAROLD C. BILLINGS, JR.		
TAKING RIGHTS	0.2 A ±	RECORD	3.8 A ±
TITLE TAKEN	COND. O. 9-30-63		
RECORDED	SPRINGFIELD Vol. 5 Pg. 305 DT. 10-2-63		

PARCEL	1	STA.	
GRANTOR	ISADORE P. B. BERNICE P. LAROE		
TAKING RIGHTS	NONE	RECORD	0.4 A ±
TITLE TAKEN	W.D. 12-14-64		
RECORDED	SPRINGFIELD Vol. 5 Pg. 291 DT. 1-7-65		

PARCEL	2	STA.	9+40-12+44	US S. SL.
GRANTOR	BERNARD F. B. JESSIE F. GREENE			
TAKING RIGHTS	0.3 A ±	RECORD	2.7 A ±	
TITLE TAKEN	COND. O. 9-30-63			
RECORDED	SPRINGFIELD Vol. 5 Pg. 305 DT. 10-2-63			

PARCEL	1	STA.	
GRANTOR	NEW ENGLAND POWER, CO.		
TAKING RIGHTS	NONE	RECORD	-
TITLE TAKEN	COND. O. 9-30-63		
RECORDED	SPRINGFIELD Vol. 5 Pg. 305 DT. 10-2-63		



Stage 1 Construction
 Rtes. US 5 & Vt. 11
 SPRINGFIELD
 F 041-2(1)
 Sheet 3 of 29

REMOVAL & DISPOSAL OF PRESENT
GUARD RAIL ITEM 550
RTE 5811 STA. 15+65-17+06 LT
12+50

CONSTRUCT DRIVE
18+50 LT
17+72-18+00 RT
16+09-17+13 RT

WOOD GUIDE POSTS
18+0 LT. 4
18+50 LT. 4

MOVING AND SETTING RR SIGNALS
FROM STA. 44+00 LT TO 17+35 LT
TO BE DONE BY OTHERS

THREE CABLE GUARD RAIL W/STEEL POSTS
STA. 15+00-17+00 LT
24+25 STA. 22+26-25+25 RT
(SEE RAMP G STA 16+12 LT
FOR END OF GUARD RAIL)

PARCEL GRANTOR	S.A.B.	STA. 14+68-24+88 US 5 SL
TAKING	EDWARD W.B. FERN A. HOWE	
RIGHTS	5.6 A±	F.M.
TITLE TAKEN RECORD ID	None	
	Cono O. 7-30-63	
	Springfield Vol. 5 508	DT. 10-2-63

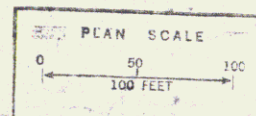
PARCEL GRANTOR	S.A.	STA. 14+68-16+25 US 5 SL
TAKING		1002 SQ FTS

ASSUMED RR CURVE DATA
Δ 48°
D 182'
R 115.3'
L 2500'
E 26.2'

DD Station Sta
10+38 = 12100 DLS
End RR Relocation

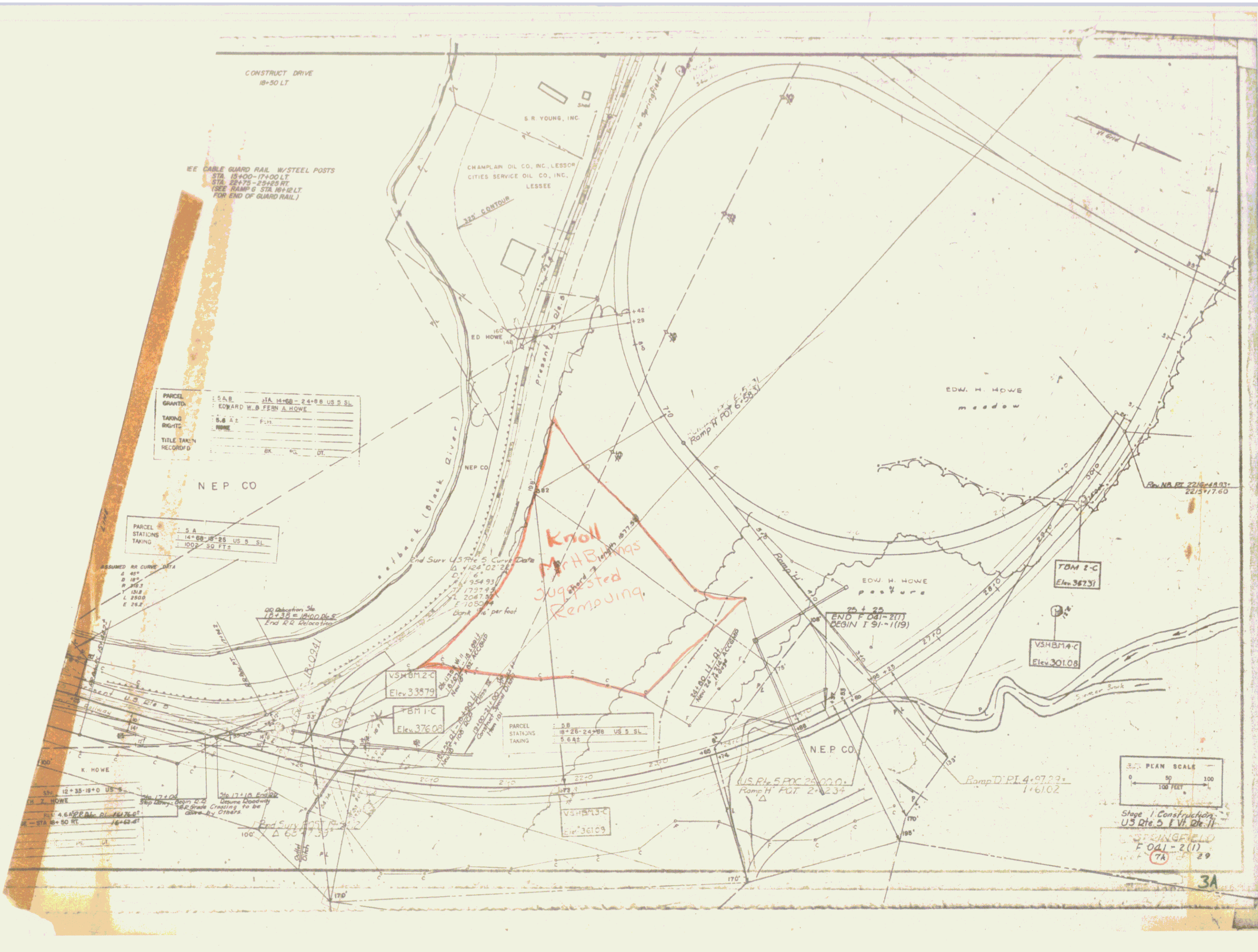
PARCEL GRANTOR	S.B.	STA. 18+26-24+88 US 5 SL
TAKING		5.6 A±

PARCEL GRANTOR	K. HOWE	STA. 12+35-19+00 US 5 SL
TAKING		4.6 A±
RIGHTS		DRAINAGE - STA 18+50 RT
TITLE TAKEN RECORD ID	Cono O. 9-30-63	Springfield Vol. 5 508 DT. 10-2-63



Stage 1 Construction
U5 Dte. 5 & V1 Dte. 11
F 041-2(1)
29

3

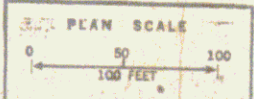


PARCEL	5 A	14+88 - 24+98 US S SL
GRANT	EDWARD W. B. FEEN & HOWE	
TAKING	5.6 AC	PL 11
RIGHTS	NONE	
TITLE TAKEN		
RECORDED	BR	PL DT

PARCEL	5 A	14+88 - 24+98 US S SL
STATIONS		
TAKING	1000	50 FT ²

ASSUMED RR CURVE DATA	
A	45°
B	18°
R	215.3
L	131.8
L	240.0
E	26.2

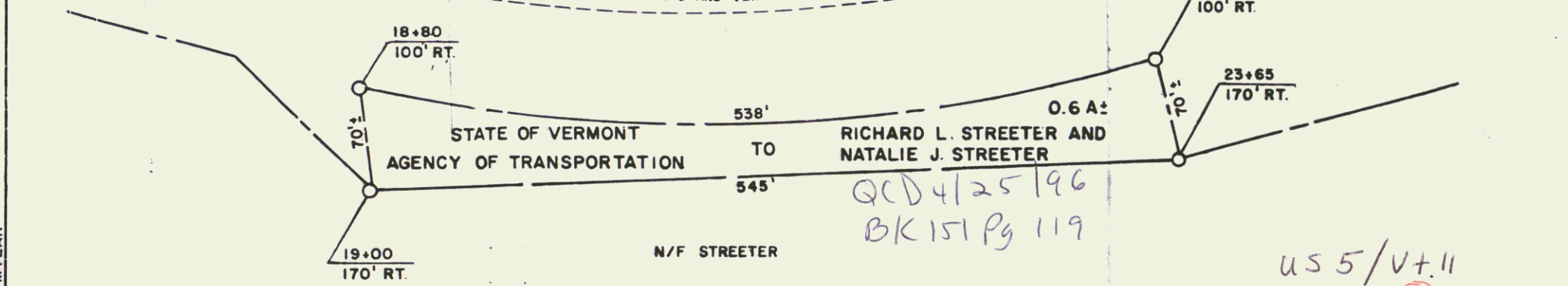
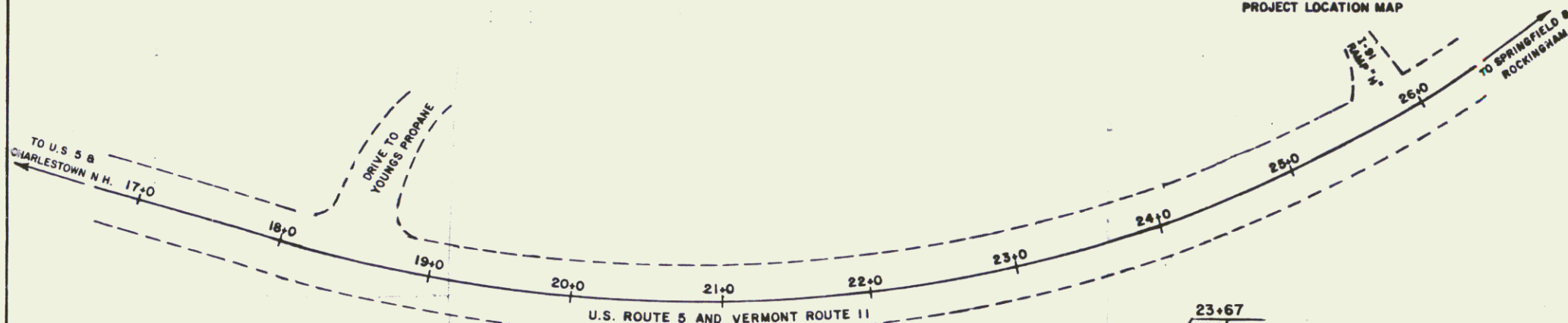
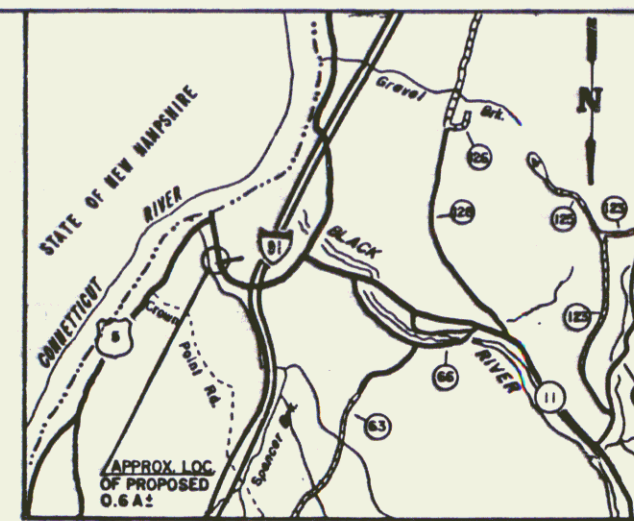
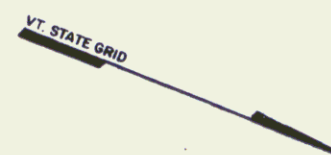
PARCEL	5 B	18+26 - 24+98 US S SL
TAKING	5.6 AC	



Stage I Construction
 US Rte. 5 F.V. Dte. II
 SPRINGFIELD
 F 041-2(1)
 (TA) 29

3A

THIS IS PART OF THE SAME LAND AND PREMISES ACQUIRED BY THE STATE FROM EDWARD W. AND FERN A. HOWE BY CONDEMNATION ORDER DATED SEPTEMBER 30, 1963 AND RECORDED IN BOOK 5, PAGES 270-303 OF THE SPRINGFIELD HIGHWAY RECORDS.



THIS IS AN ORIGINAL MYLAR

LEGEND

--- EXISTING R.O.W. AFTER CONVEYANCE



QC D 4125196
BK 151 Pg 119

U.S. 5 / V. 11

SHEET 3A
REF. PROJECT: SPRINGFIELD F 041-2(1)

STATE OF VERMONT
AGENCY OF TRANSPORTATION

TOWN OF SPRINGFIELD

APPROX. SCALE 1"=50' 98 DRAWN BY R.L.M.