

FED. ROAD DIST. NO.	STATE	FED. AID PROJ. NO.	FISCAL YEAR	SHEET NO.	TOTAL SHEETS
9	VT.	E135B	1932	1	20

INDEX OF SHEETS

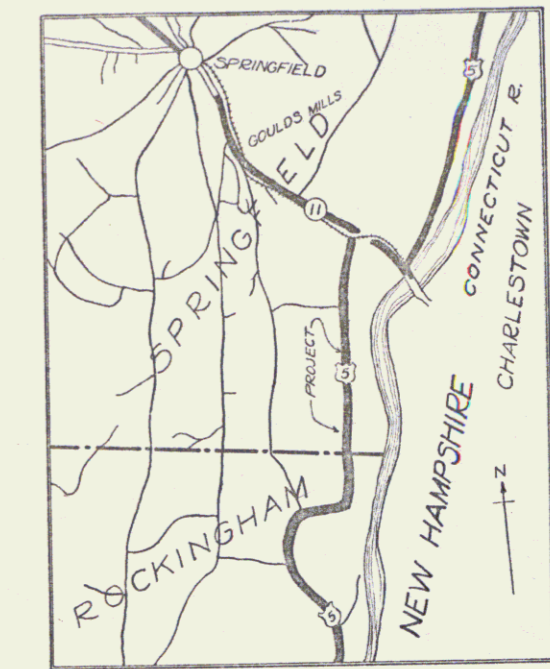
SHEET NO. 1	TITLE PAGE	
2	TYPICAL CROSS-SECTION OF IMPROVEMENT	GRADING, BASE & CULVERT CONST.
3	BANKING & WIDENING TABLES	
4-8	PLAN & PROFILE SHEETS	
9	STANDARD STRUCTURE SHEET	520 (PIPE CULVERTS)
10	BARRICADES, SIGNS & LIGHTS	25.11
11-20	CROSS SECTIONS	

STATE OF VERMONT
STATE HIGHWAY DEPARTMENT

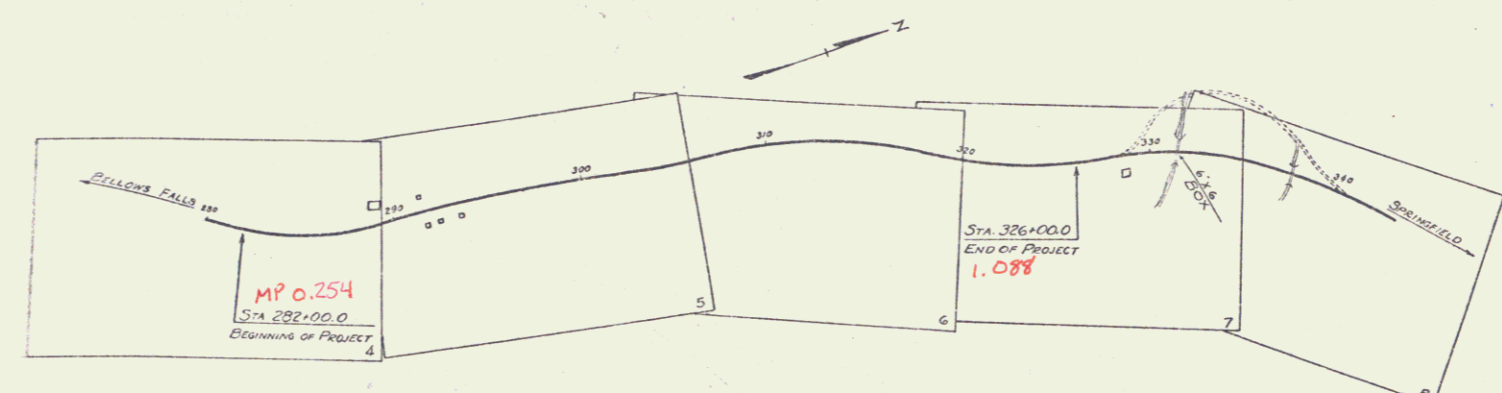
PLAN AND PROFILE OF PROPOSED
STATE HIGHWAY
FEDERAL AID PROJECT

TOWN OF SPRINGFIELD **Route: US 5**
MISSING LINK ROAD **Project: F#E-135B**
Pin# 99R368

FROM 1200 FEET NORTH OF THE ROCKINGHAM-
SPRINGFIELD TOWN LINE NORTHERLY 0.831 MILES
TO 600 FEET SOUTH OF 6X6 BOX CULVERT
LENGTH OF PROJECT 4390.0 FEET = 0.831 MILES



SCALE 1" = 1 MILE
RIGHT-OF-WAY DIVISION
TOWN FILE
PERPETUAL
Town of US 5
(To Be Returned To R.O.W. Division)



APPROVED SEPT 23 1932
H. E. Langan
COMMISSIONER OF HIGHWAYS
SUBMITTED BY ORDER OF THE STATE HIGHWAY DEPARTMENT

CONVENTIONAL SIGNS

COUNTY LINE	GROUND ELEVATION	100'
TOWN LINE	FENCE LINE	100'
STONE WALL	UNFENCED PROPERTY	
GUARD RAIL	TRAVELED WAY	
RAILROAD	RETAINING WALL	
CENTER LINE	SURVEY LINE	
CULVERT	DROP INLET	
TROLLEY POLE	POWER POLE	
TELEPHONE POLE	TREES	
HEDGE		

CURVE DATA

DEFLECTION ANGLE	Δ
DEGREE OF CURVE	D
RADIUS OF CURVE	R
TANGENT DISTANCE	T
LENGTH OF CURVE	L
EXTERNAL DISTANCE	E
POINT OF INTERSECTION	P.I.
POINT OF CURVE	P.C.
POINT OF TANGENT	P.T.
POINT ON TANGENT	P.O.T.

SCALES
TITLE 1" = 500'
PLAN 1" = 30'
PROFILE 1" = 10'
VERT 1" = 10'
CROSS SECTION 1" = 5'

These plans are subject to such revisions as may be required by the Bureau of Public Roads or the Commissioner of Highways. Construction is to be carried on in accordance with the Standard Road and Bridge Specifications of 1930 with such revised specifications and special provisions as are submitted with these plans.

RECOMMENDED _____
DISTRICT ENGINEER BUREAU OF PUBLIC ROADS

RECOMMENDED FOR APPROVAL _____
CHIEF ENGINEER BUREAU OF PUBLIC ROADS

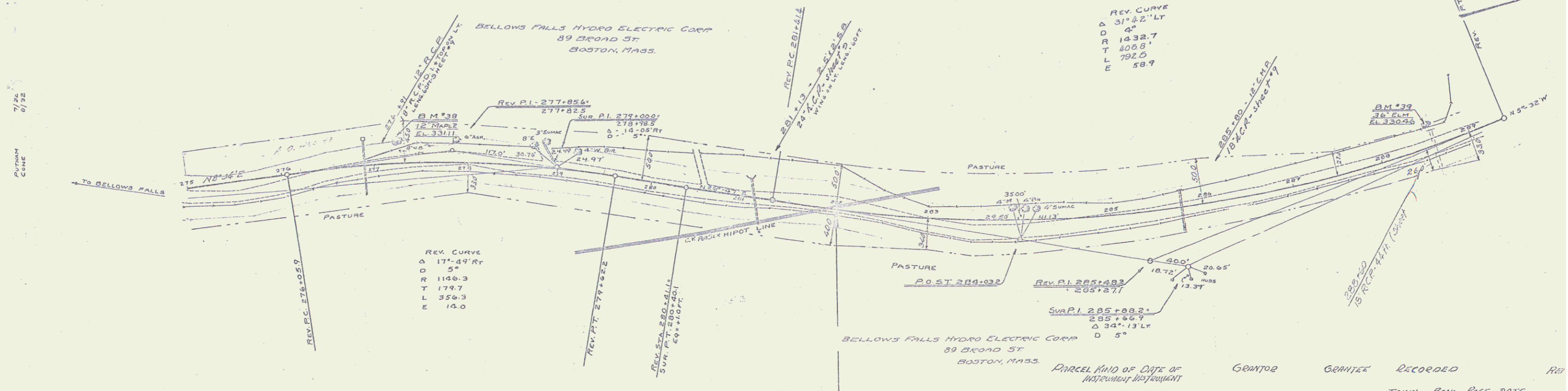
APPROVED _____
DIRECTOR BUREAU OF PUBLIC ROADS

CORRECT Sept 23 1932
ROAD ENGINEER

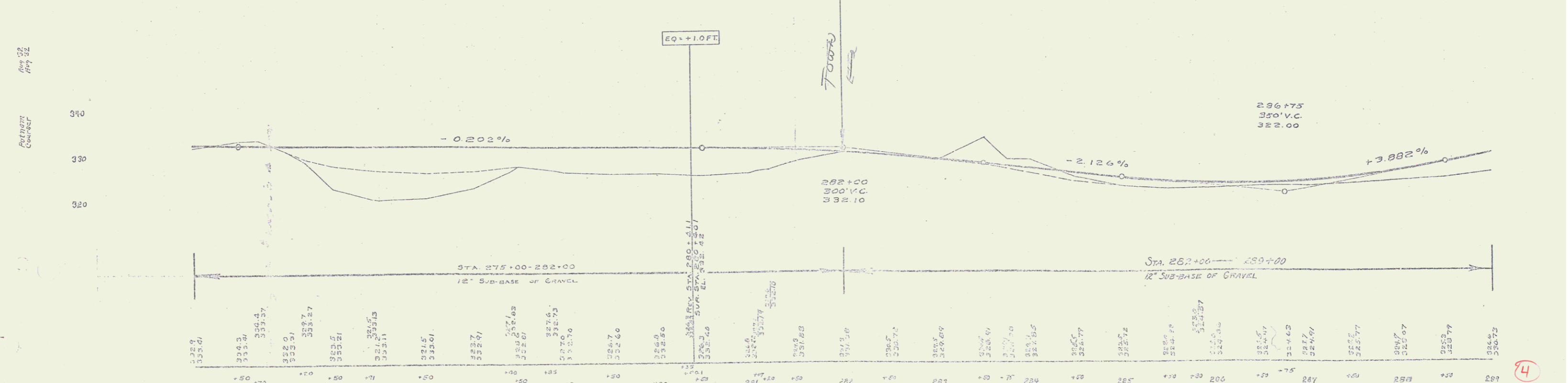
SERIES F. NO. E135B/F1
SHEET 1 OF 20

DIST # 2 PLANS

E-135A 1932
(en) E-135B 1932

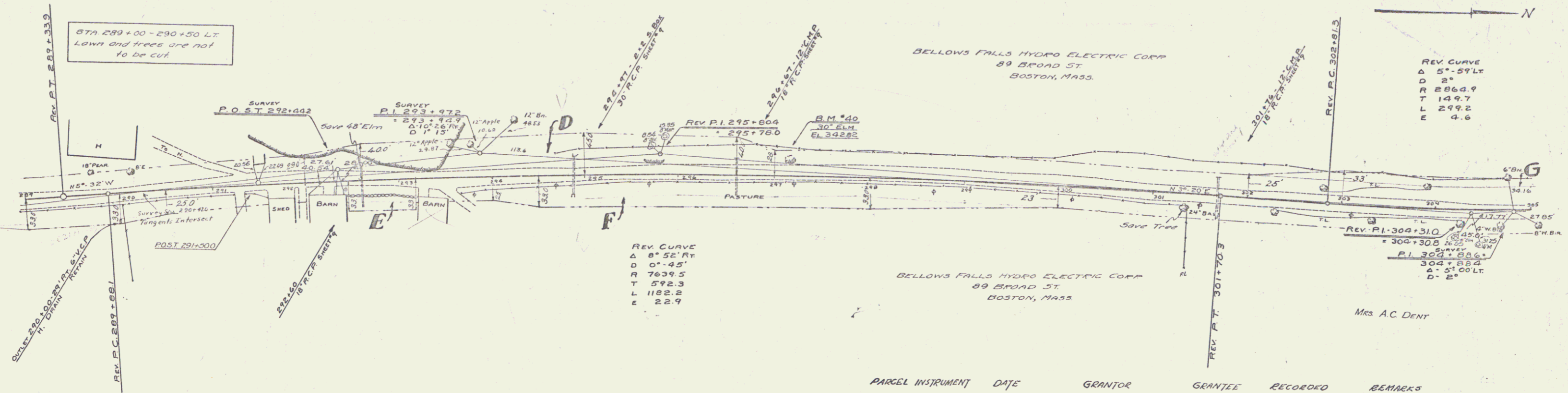


PARCEL	KIND OF DATE OF INSTRUMENT	GRANTOR	GRANTEE	RECORDED	REMARKS
B,C CORP. Q.C.	6-26-1933	BELLINGS FALLS HYDRO-ELECTRIC CORP.	ST. OF VT. SPRINGFIELD 44	89-90	7-5-1933 SE
A,B,C CORP. Q.C.	6-26-1933	BELLINGS FALLS HYDRO-ELECTRIC CORP.	ST. OF VT. SPRINGFIELD 44	93-95	7-5-1933 SE OF E

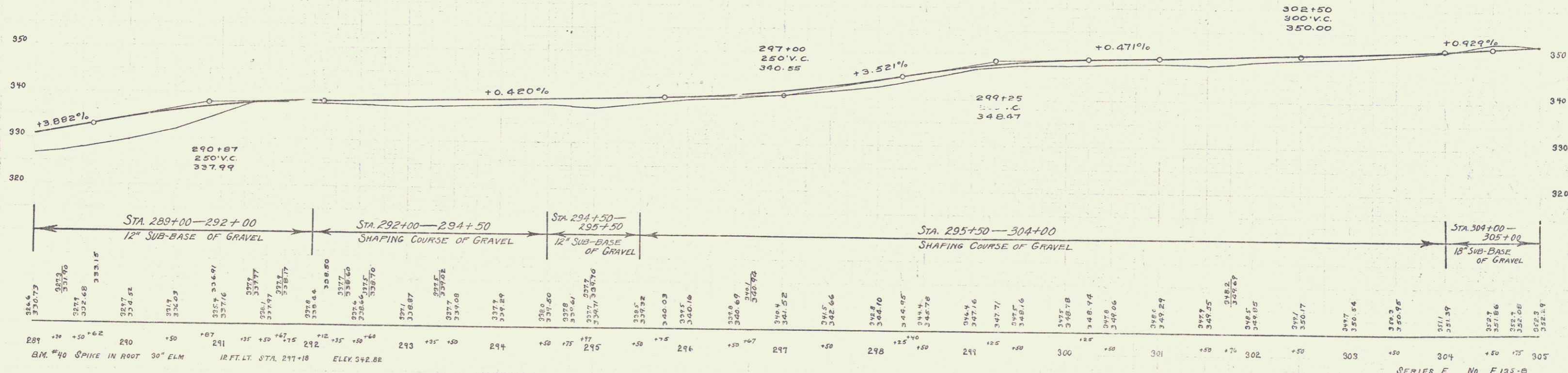


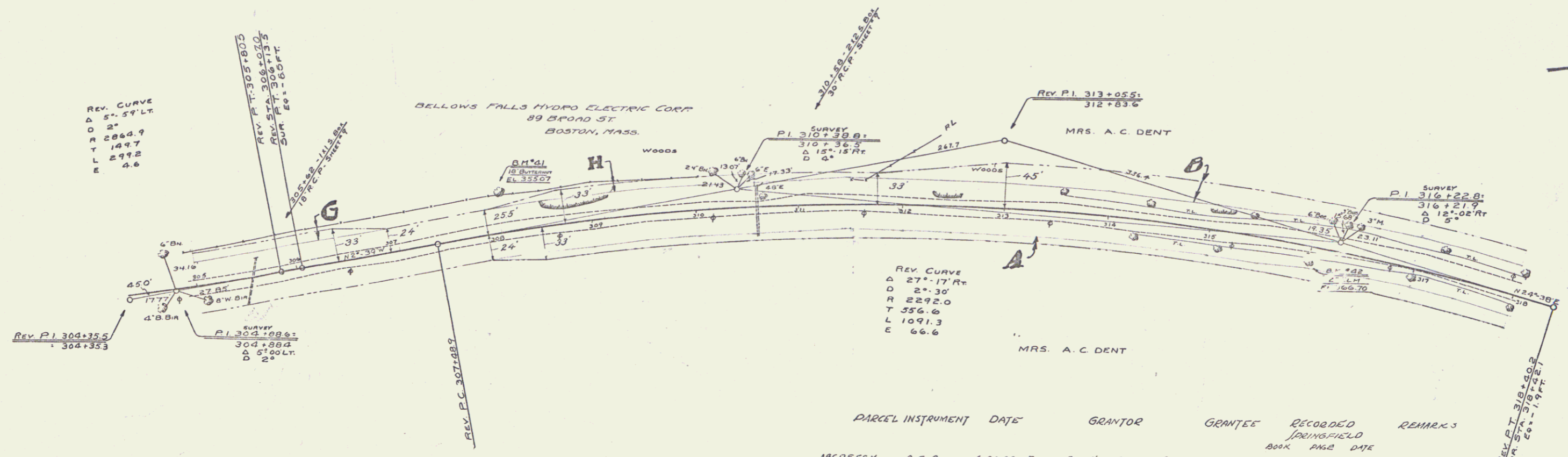
STATION	ELEVATION	STATION	ELEVATION	STATION	ELEVATION
275	325.8	280	325.0	285	325.0
276	325.3	281	325.0	286	325.0
277	325.3	282	325.0	287	325.0
278	325.3	283	325.0	288	325.0
279	325.3	284	325.0	289	325.0
280	325.3	285	325.0		
281	325.3	286	325.0		
282	325.3	287	325.0		
283	325.3	288	325.0		
284	325.3	289	325.0		
285	325.3				
286	325.3				
287	325.3				
288	325.3				
289	325.3				

SERIES SHEET (4) No. E-135A

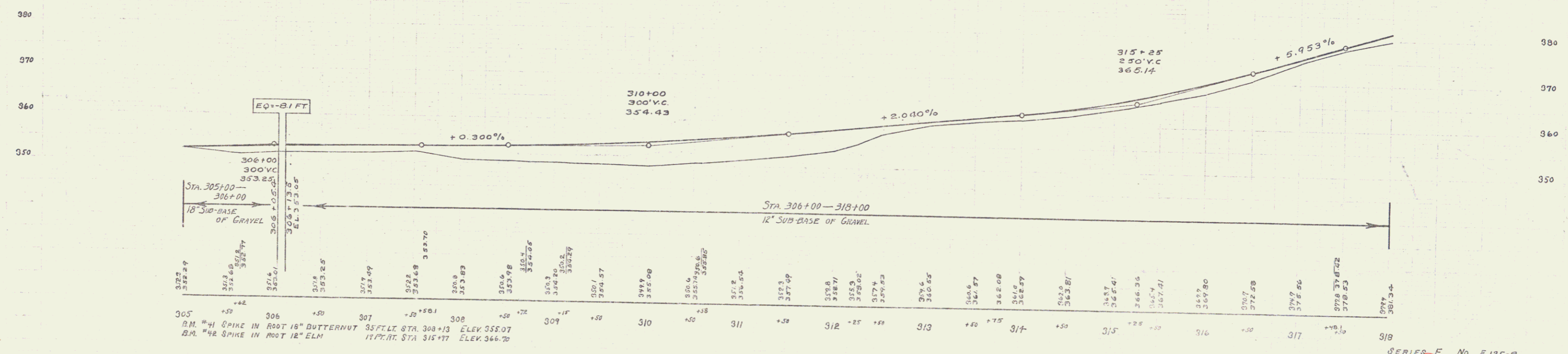


PARCEL	INSTRUMENT	DATE	GRANTOR	GRANTEE	RECORDED	REMARKS
ABCDERGH	G.C.O.	6-26-30	BELLOWS FALLS HYDRO ELEC. CO.	ST. OF VT.	BOOK PAGE DATE 44 93-95 7-5-33	See Sheet E of E-135A PROJECT for Beginning.



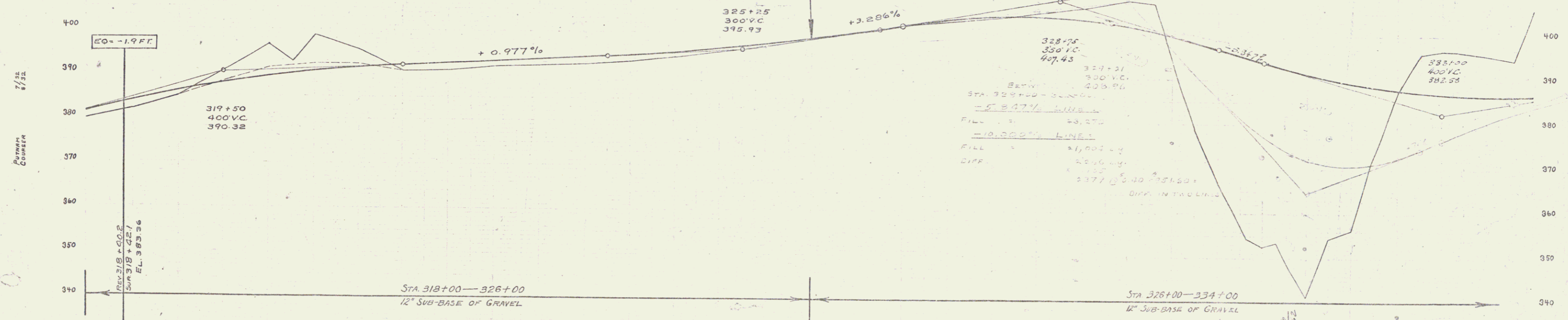
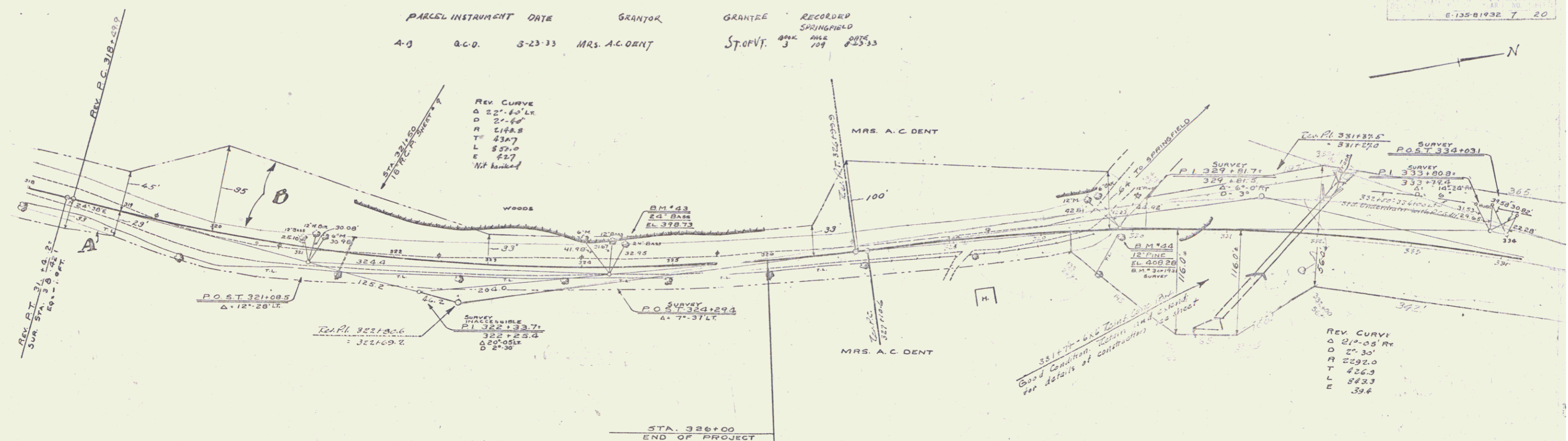


PARCEL	INSTRUMENT	DATE	GRANTOR	GRANTEE	RECORDED	REMARKS
					BOOK PAGE DATE	
ABCDEFH	A.C.D.	6-28-33	BELLWIS FALLS HYDRO ELECTRIC CO.	ST. OF VT.	43 93-95 7-5-33	CUL STA. 301+70
A'B'	A.C.D.	8-23-33	MRS. A. C. DENT	"	3 109 8-23-33	305+50 310+50 321+50



PARCEL INSTRUMENT DATE GRANTOR GRANTEE RECORDED
 A-0 G.C.O. 3-23-33 MRS. A.C. DENT ST. OF VT. BANK FILE DATE
 3 109 823-33

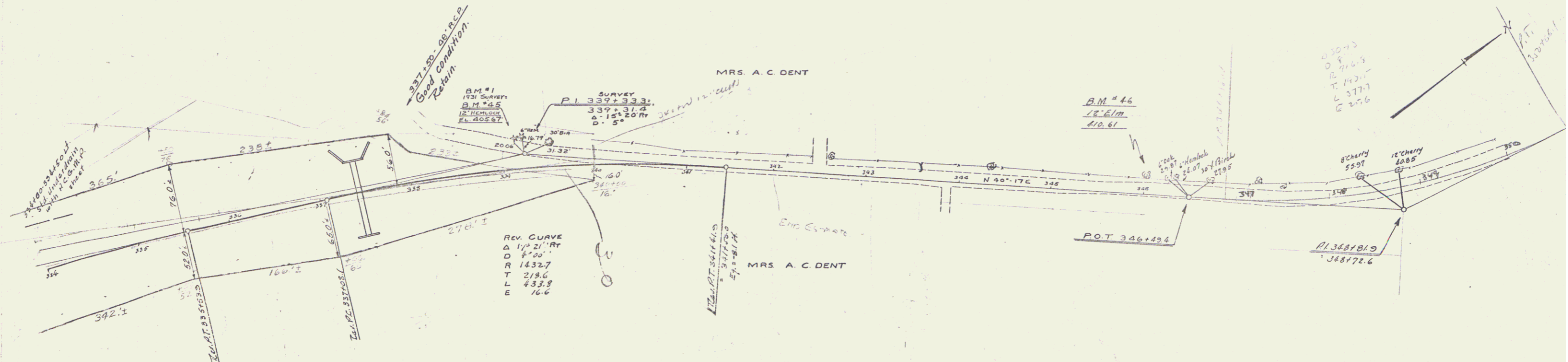
6:135-8193E 7 20



318	319	320	321	322	323	324	325	326	327	328	329	330	331	332	333	334
387.34	387.5	387.94	387.83	387.74	387.67	387.65	387.63	387.62	387.61	387.60	387.59	387.58	387.57	387.56	387.55	387.54
B.M. #43 SPIKE IN ROOT 2 1/2" BRSSWOOD 2.2 FT. LT. STA. 324+47 ELEV. 318.73																
B.M. #44 SPIKE IN ROOT 12" PINE 1 FT. RT. STA. 321+80 ELEV. 308.88																

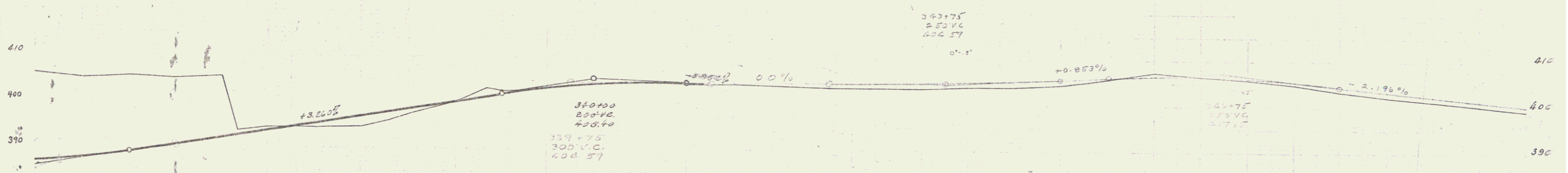
SHEET 7 No. E 135-81 of 20

5



PARCEL INSTRUMENT	DATE	GRANTOR	GRANTEE	RECORDED SPRINGFIELD BOOK PAGE DATE	REMARKS
		MRS. A. C. DENT	11071		

A. C. DENT
CONTRACTOR



STATION	DESCRIPTION	ELEVATION
334	B.M. #45 Spike in root 12" Hemlock	405.57
335	B.M. #46 Spike in root 12" Elm	410.61
336	17' Lt. Sta. 339+22	405.57
337	17' Lt. Sta. 346+00	410.61
338	17' Lt. Sta. 346+00	410.61
339	17' Lt. Sta. 346+00	410.61
340	17' Lt. Sta. 346+00	410.61
341	17' Lt. Sta. 346+00	410.61
342	17' Lt. Sta. 346+00	410.61
343	17' Lt. Sta. 346+00	410.61
344	17' Lt. Sta. 346+00	410.61
345	17' Lt. Sta. 346+00	410.61
346	17' Lt. Sta. 346+00	410.61
347	17' Lt. Sta. 346+00	410.61
348	17' Lt. Sta. 346+00	410.61
349	17' Lt. Sta. 346+00	410.61
350	17' Lt. Sta. 346+00	410.61

6