

INDEX OF SHEETS

SHEET NO.	TITLE PAGE
"	" 2 TYPICAL CROSS-SECTION OF IMPROVEMENT } GRADING, DITCHING AND
"	" 3 BANKING AND WIDENING TABLES } BASE CONSTRUCTION
"	" 3 LAYOUTS
"	" 9 STANDARD STRUCTURE SHEET 5-20 PIPE CULVERT
"	" 10 " " 3-22 GROUTED COBBLE GUTTER
"	" 11 BARRICADE SIGNS + LIGHTS 5B-11
"	" 12-47 CROSS SECTIONS

FED. ROAD DIST. NO.	STATE	FED. AID PROJ. NO.	FISCAL YEAR	SHEET NO.	TOTAL SHEETS
9	VT.	C-135A	1932	1	47

STATE OF VERMONT
STATE HIGHWAY DEPARTMENT

PLAN AND PROFILE OF PROPOSED
STATE HIGHWAY

FEDERAL AID PROJECT

TOWNS OF ROCKINGHAM - SPRINGFIELD

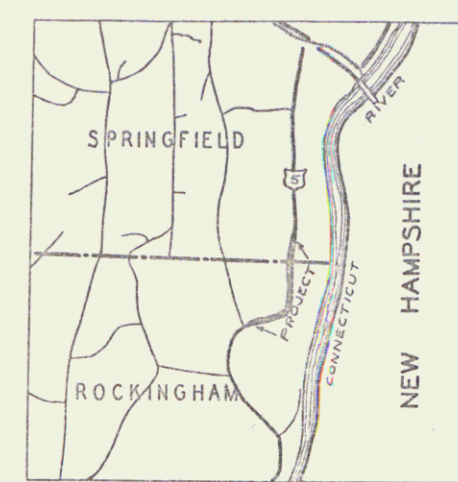
MISSING LINK ROAD

Route: US 5

Project: FE-135A

Pin # 99 R367

FROM 300 FEET SOUTH OF ROAD TO GUN CLUB
NORTHERLY 1.075 MILES TO A POINT 1342 FEET
NORTH OF THE SPRINGFIELD-ROCKINGHAM TOWN LINE
LENGTH OF PROJECT: 5676.4 FEET=1.075 MILES



SCALE: 1 INCH = 1 MILE

sheet #5 missing
RIGHT-OF-WAY DIVISION
TOWN FILE
PERPETUAL
Town of US 5
(To Be Returned To R.O.W. Division)

APPROVED Oct. 31, 1932
H. E. Langart
COMMISSIONER OF HIGHWAYS
SUBMITTED BY ORDER OF THE STATE HIGHWAY BOARD

CONVENTIONAL SIGNS

- COUNTY LINE
- TOWN LINE
- FENCE LINE
- STONE WALL
- UNFENCED PROPERTY
- GUARD RAIL
- TRAVELED WAY
- RAILROAD
- RETAINING WALL
- CENTER LINE
- SURVEY LINE
- CULVERT
- DROP INLET
- TROLLEY POLE
- POWER POLE
- TELEPHONE POLE
- TRICES
- HEDGE

- GROUND ELEVATION
- GRADE ELEVATION

- CURVE DATA
- DEFLECTION ANGLE
 - DEGREES OF CURVE
 - RADIUS OF CURVE
 - TANGENT DISTANCE
 - LENGTH OF CURVE
 - EXTERNAL DISTANCE
 - POINT OF INTERSECTION
 - POINT OF CURVE
 - POINT OF TANGENT
 - POINT ON TANGENT



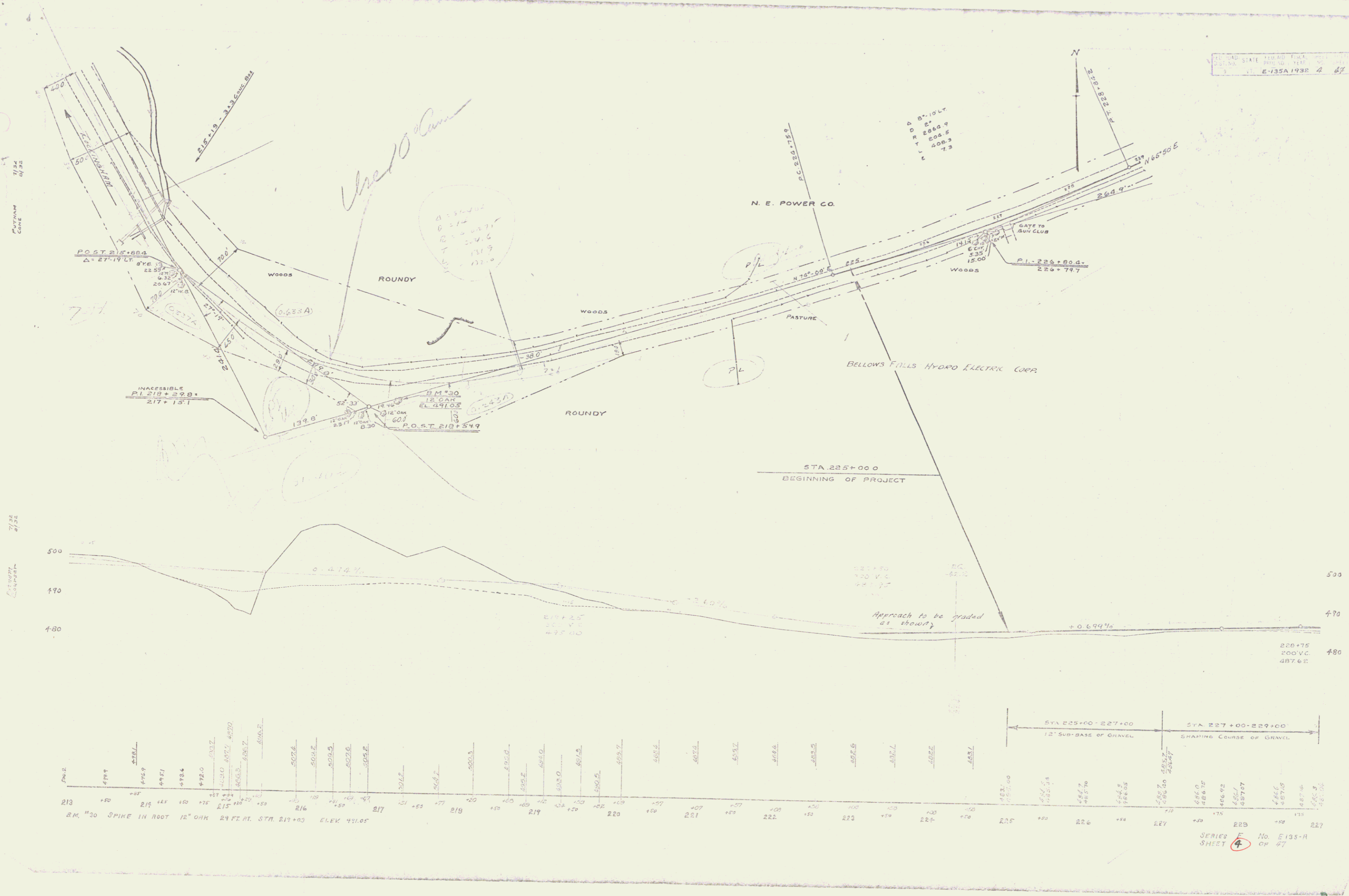
SCALES
PLAN 1" = 100'
PROFILE 1" = 10'
VERTICAL CURVE 1" = 10'

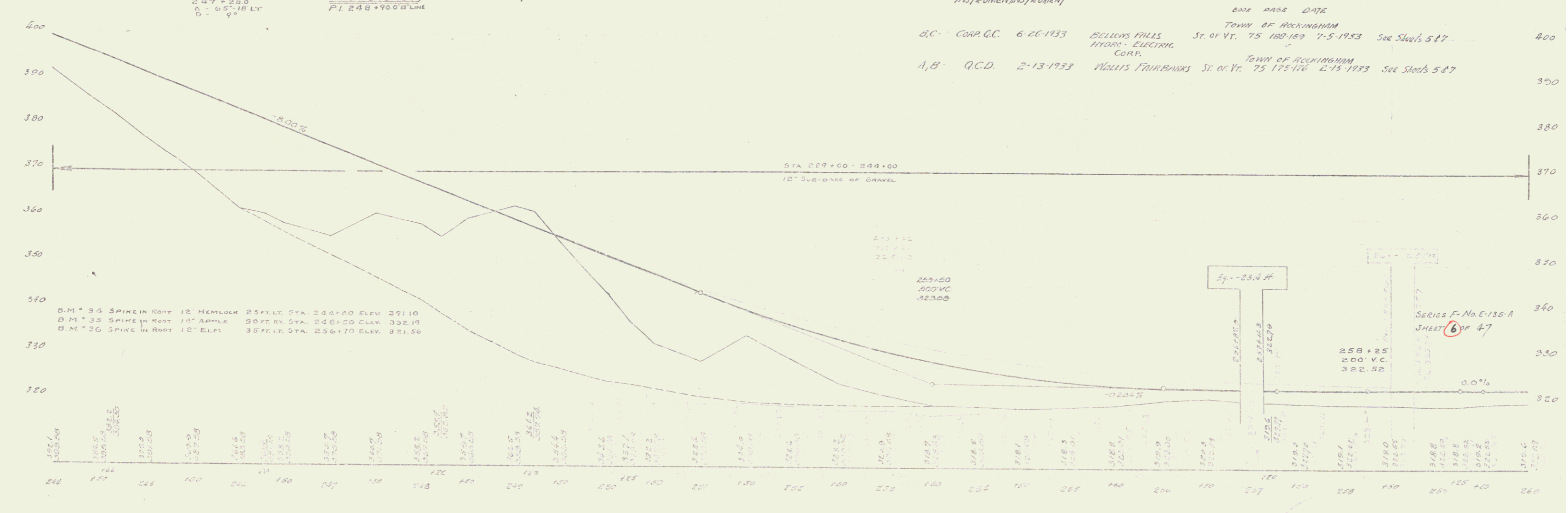
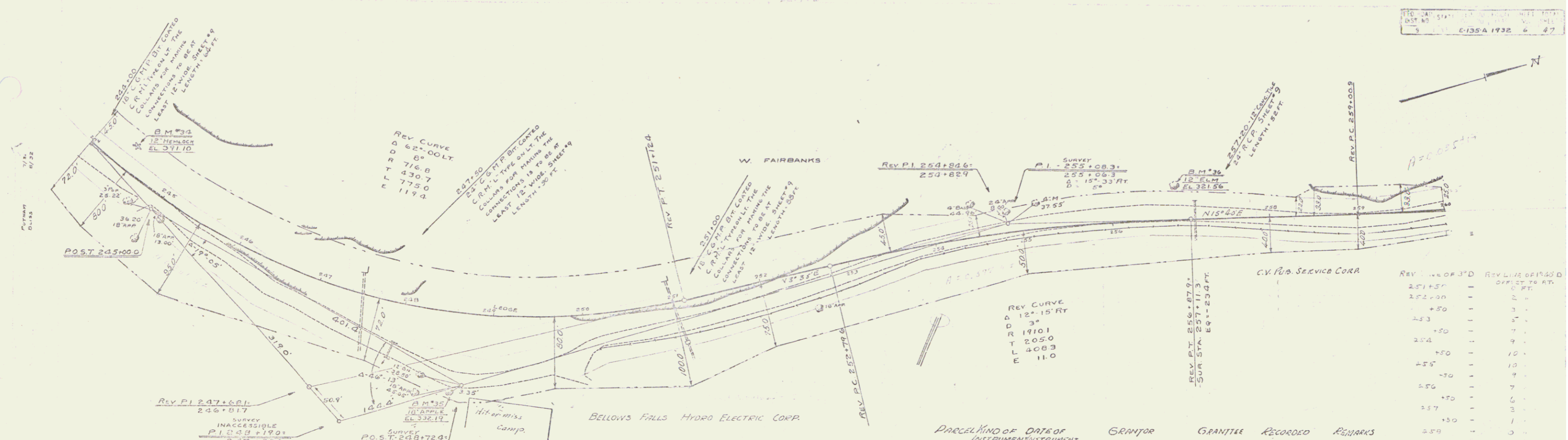
These plans are subject to such revisions as may be required by the Bureau of Public Roads or the Commissioner of Highways. Construction is to be carried on in accordance with the Standard Road and Bridge Specifications of 1930 with such revised specifications and special provisions as are admitted with these plans.

RECOMMENDED
RECOMMENDED FOR APPROVAL
APPROVED

APPROVED Oct. 31, 1932
H. E. Langart
COMMISSIONER OF HIGHWAYS
NO. 2-354 FILED
SHEET 1 OF 47

DIST #2 PLANS 1



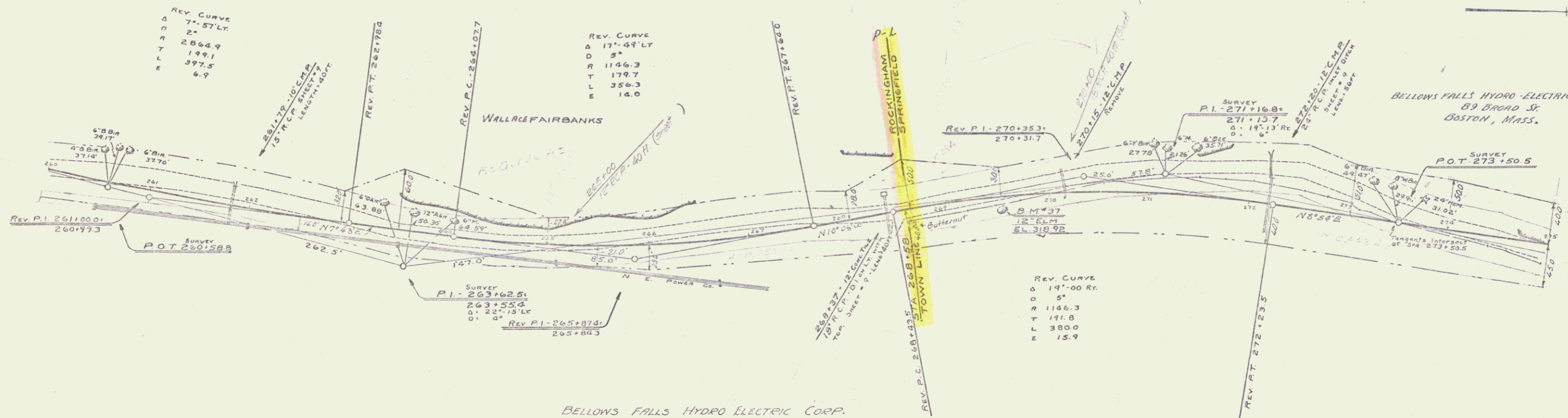


PARCEL	KIND OF INSTRUMENT	DATE OF INSTRUMENT	GRANTOR	GRANTEE	RECORDED	REMARKS
B,C	COMP. G.C.	6-26-1933	BELLOWS FALLS HYDRO-ELECTRIC CORP.	TOWN OF ROCKINGHAM ST. OF VT.	75-189-189	7-5-1933 See Sheets 5 & 7
A,B	Q.C.D.	2-13-1933	WALLIS FAIRBANKS	TOWN OF ROCKINGHAM ST. OF VT.	75-175-176	2-15-1933 See Sheets 5 & 7

B.M. 34 SPIKE IN ROOT 12 HEMLOCK 25 FT. STA. 244+40 ELEV. 391.10
 B.M. 33 SPIKE IN ROOT 10" APPLE 30 FT. STA. 248+20 ELEV. 332.19
 B.M. 26 SPIKE IN ROOT 10" ELPI 35 FT. STA. 256+70 ELEV. 321.56

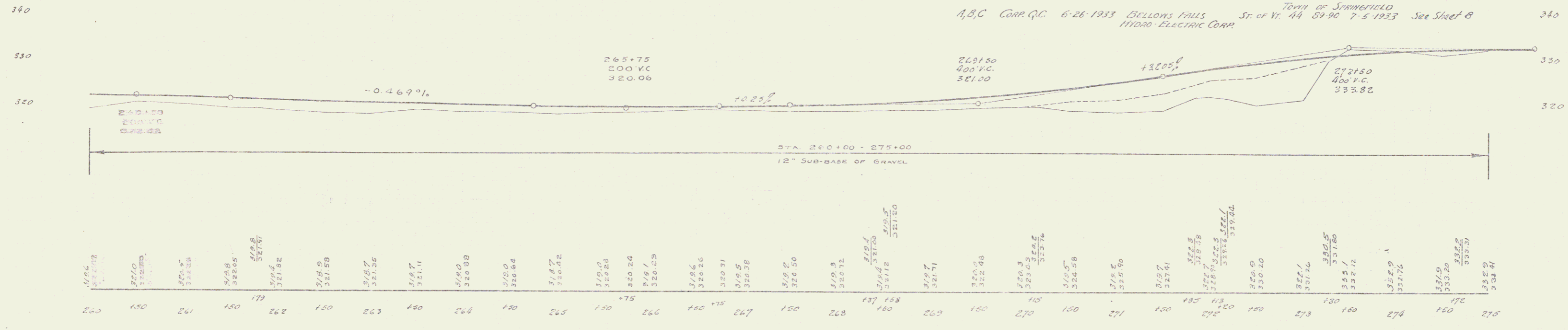
Eq. 25.4 #
 258+25
 2.00 V.C.
 322.52

SERIES F-NO. E-136-A
 SHEET 6 OF 47



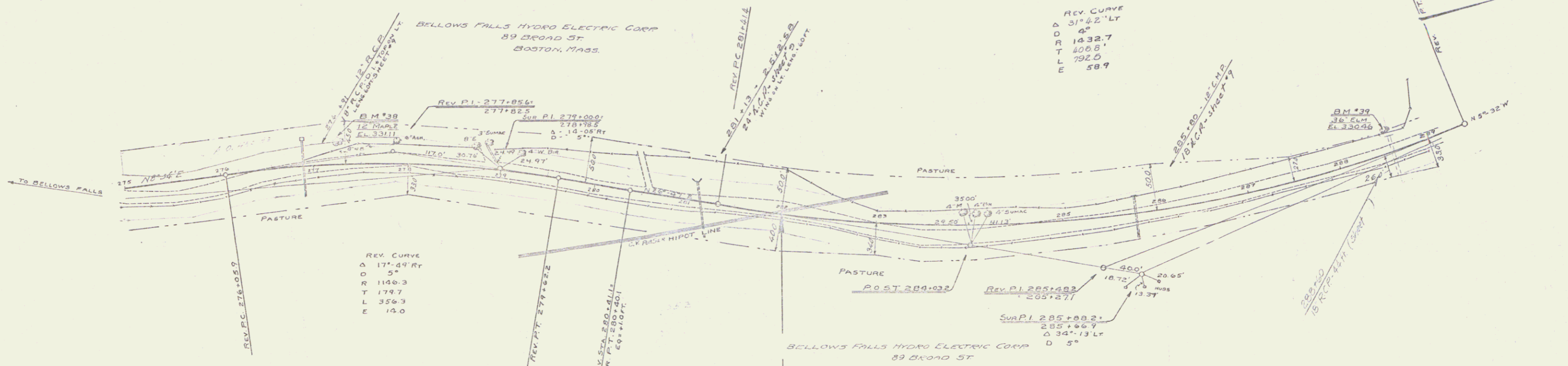
BELLOWS FALLS HYDRO ELECTRIC CORP.

Parcel	Kind of	Date of	Grantor	Grantee	Grantee	Recorded	Remarks
G, D	Comp. Q.C.	6-26-1933	BELLOWS FALLS HYDRO-ELECTRIC CORP.	Town of Rockingham	St. of Vt. 15	188-189	7-5-1933 See Sheet 5 & 6
G, D	Q.C.D.	2-13-1933	WALLACE FAIRBANKS	Town of Rockingham	St. of Vt. 75	175-176	2-13-1933 See Sheet 5 & 6
A, B, C	Comp. Q.C.	6-26-1933	BELLOWS FALLS HYDRO-ELECTRIC CORP.	Town of Springfield	St. of Vt. 44	89-90	7-5-1933 See Sheet 8

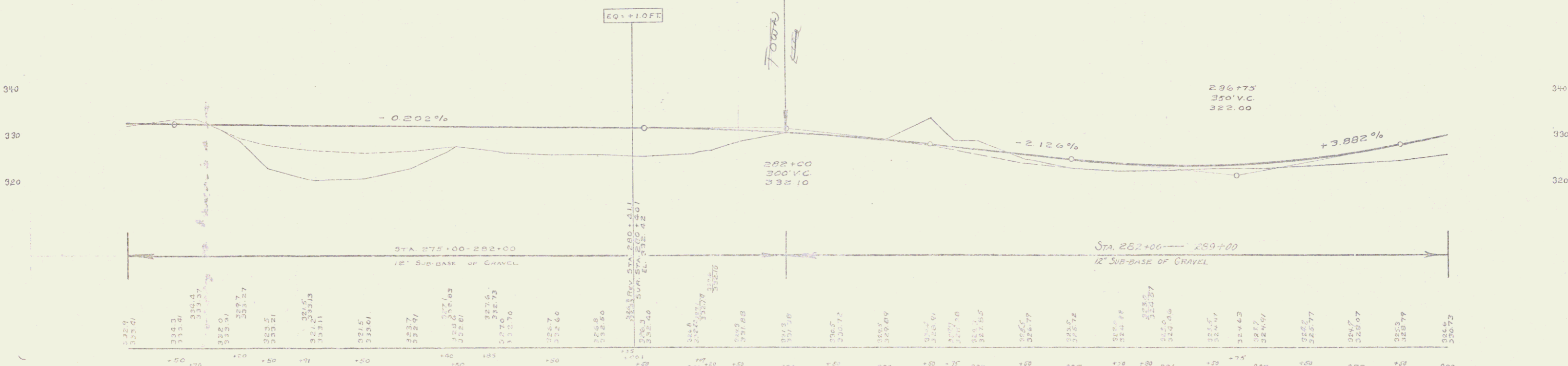


B.M. 37 SPIKE IN ROOT 12" GLM 14 FT. RT. STA. 269+50 ELEV. 318.92

E-135A 1932
 (M) E-135B 1932



PARCEL	KIND OF DATE OF INSTRUMENT	GRANTOR	GRANTEE	TOWN BOOK	RECORDED PAGE DATE	REMARKS
B, C	CONF. Q.C.	6-26-1933	BELLOWS FALLS HYDRO ELECTRIC CORP.	ST. OF VT. SPRINGFIELD 44	89-90 7-5-1933	See Sheet 7
A, B, C	CONF. Q.C.	6-26-1933	BELLOWS FALLS HYDRO ELECTRIC CORP.	ST. OF VT. SPRINGFIELD 44	93-95 7-5-1933	See Sheet 5 of Map From E-135 B



275 276 277 278 279 280 281 282 283 284 285 286 287 288 289

12" SUB-BASE OF GRAVEL

12" SUB-BASE OF GRAVEL

B.M. 38 SPIKE IN ROOT 12" MAPLE 17' ELY. S.W. 277+00 ELEV. 331.11
 B.M. 37 SPIKE IN ROOT 36" ELN 24' ELY. S.W. 286+02 ELEV. 336.75

SERIES E No. E-135-A
 SHEET 8 OF 67

5