

INDEX OF SHEETS

SHEET NO.	TITLE PAGE
1	TITLE PAGE
2	TYPICAL CROSS-SECTION OF IMPROVEMENT - CRUSHED GRAVEL MIXED-IN-PLACE SURFACE COURSE WITH REFINED TAR.
3	BANKING AND WIDENING TABLES
4-10	PLAN & PROFILE SHEETS
11	STANDARD STRUCTURE SHEET 5-23 Pipe Curb
12	" " " " 5-29 Box "
13	" " " " 5-30 Guard Rail
14	" " " " 5-31 Boundary Markers
15	" " " " 5-50 Barricades, Signs, & Lights
16	" " " " 30-1 Box Curb
17-35	CROSS SECTION SHEETS

STANDARD STRUCTURE SHEETS APPROVED BY THE CHIEF ENGINEER.

328 & 329	JULY 11, 1933
330	AUG. 15, 1933
331	JULY 23, 1934

STATE OF VERMONT  
STATE HIGHWAY DEPARTMENT

PLAN AND PROFILE OF PROPOSED  
STATE HIGHWAY

FEDERAL AID PROJECT

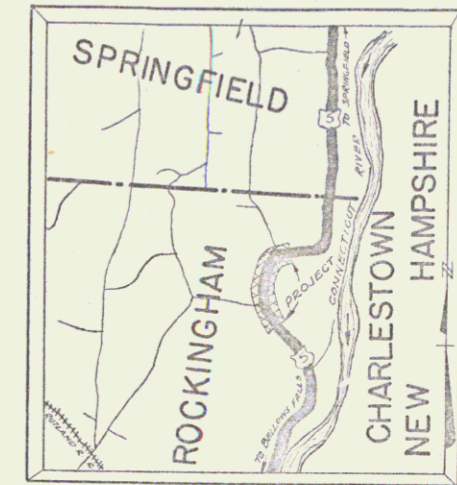
TOWN OF ROCKINGHAM

BELLOWS FALLS-SPRINGFIELD ROAD

BEGINNING AT A POINT 2.01 MILES SOUTHERLY OF THE  
ROCKINGHAM-SPRINGFIELD TOWN LINE AND EXTENDING  
NORTHERLY 1.194 MILES

LENGTH OF PROJECT 6307.0 FT. = 1.194 MI.

FED. ROAD DIST. NO.	STATE	FED. AID PROJ. NO.	FISCAL YEAR	SHEET NO.	TOTAL SHEETS
9	VT.	235-0	1937	7	18

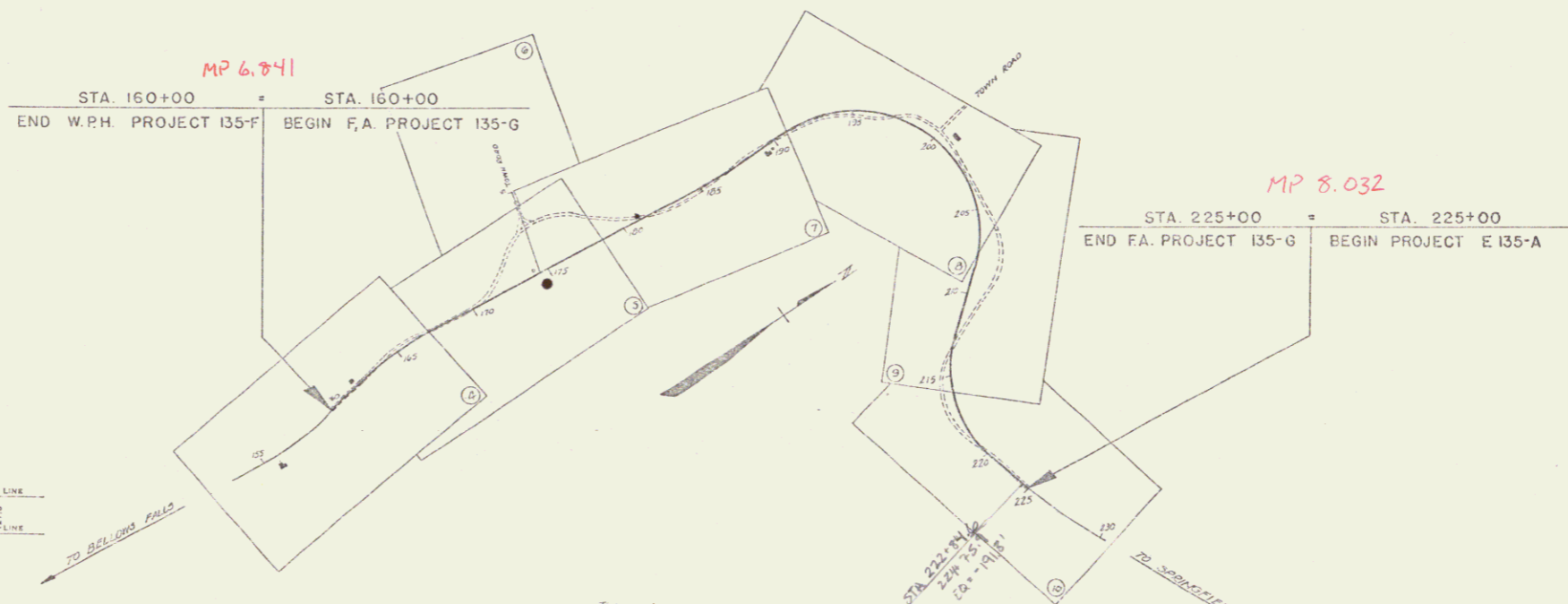


SCALE 1 in. = 1 mi.

Pin# 99R366

Route: US5

Project: FAP135G



RIGHT-OF-WAY DIVISION  
TOWN FILE  
PERPETUAL  
Term of US5  
[To Be Returned To R.O.W. Division]

APPROVED: February 18, 1937  
H. H. [Signature]  
COMMISSIONER OF HIGHWAYS  
SUBMITTED BY ORDER OF THE STATE HIGHWAY BOARD

CONVENTIONAL SIGNS

COUNTY LINE	GROUND ELEVATION
TOWN LINE	RAILROAD
FENCE LINE	STONE WALL
STONE WALL	UNFENCED PROPERTY
UNFENCED PROPERTY	GUARD RAIL
GUARD RAIL	TRAVELED WAY
TRAVELED WAY	RAILROAD
RAILROAD	RETAINING WALL
RETAINING WALL	CENTER LINE
CENTER LINE	SURVEY LINE
SURVEY LINE	CULVERT
CULVERT	DROP INLET
DROP INLET	TROLLEY POLE
TROLLEY POLE	POWER POLE
POWER POLE	TELEPHONE POLE
TELEPHONE POLE	TREES
TREES	HEDGE
HEDGE	

CURVE DATA

DEFLECTION ANGLE	Δ
DEGREE OF CURVE	D
RADIUS OF CURVE	R
TANGENT DISTANCE	T
LENGTH OF CURVE	L
EXTERNAL DISTANCE	E
POINT OF INTERSECTION	P. I.
POINT OF CURVE	P. C.
POINT OF TANGENT	P. T.
POINT ON TANGENT	P. O. T.

SCALES

TITLE	1 in. = 500 ft.
TYPICAL	1 in. = 20 ft.
PLAN	1 in. = 50 ft.
PROFILE	1 in. = 50 ft.
CROSS SECTIONS	1 in. = 5 ft.

These plans are subject to such revisions as may be required by the Bureau of Public Roads or the Commissioner of Highways.  
Construction is to be carried on in accordance with the plans and Standard Road and Bridge Specifications of 1936, as approved Dec. 23, 1936 by the Bureau of Public Roads, including all subsequent approved revisions and such revised specifications and special provisions as are submitted with the plans.

RECOMMENDED  
DISTRICT ENGINEER  
RECOMMENDED FOR APPROVAL  
CHIEF ENGINEER  
APPROVED  
SECTION CHIEF

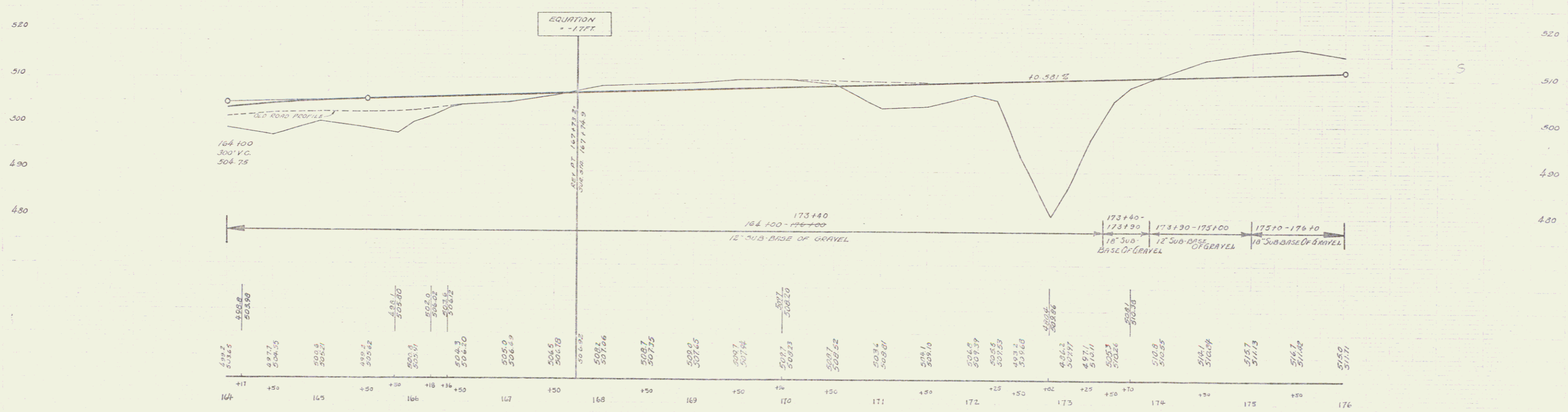
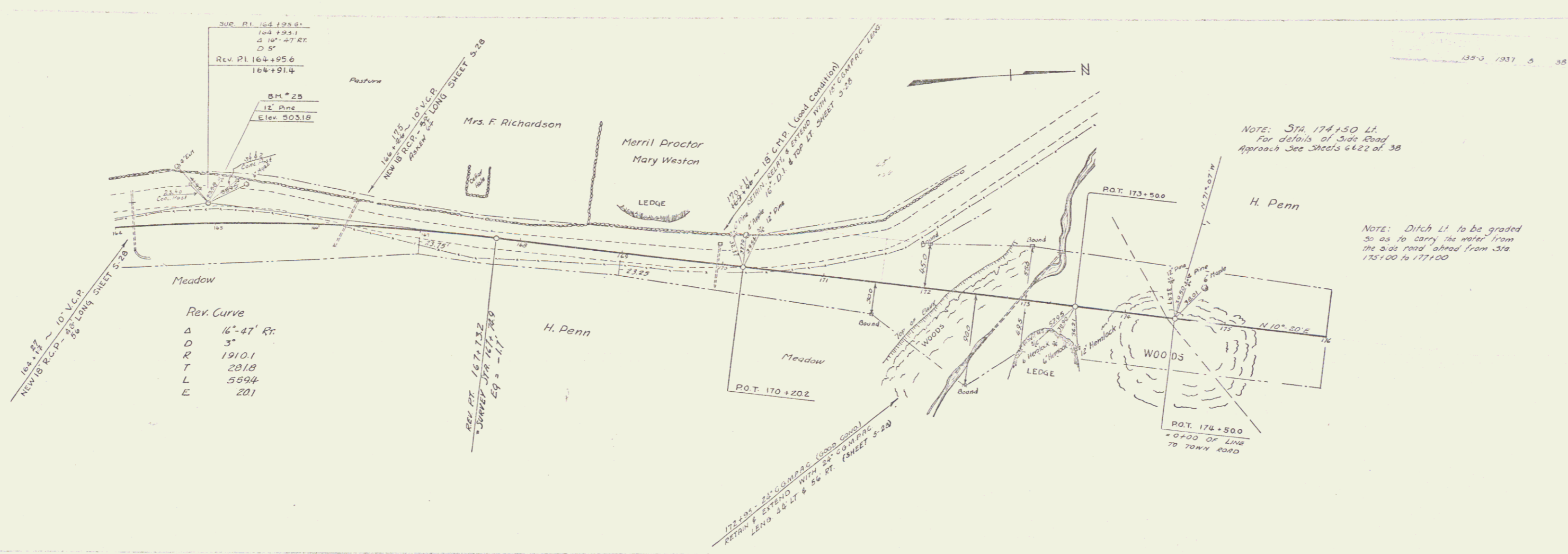
APPROVED: February 23, 1937  
[Signature]  
ROAD ENGINEER

SERIES F 7 AND 135-G FILED  
SHEET 1 OF 34

DIST. # 2 PLANS



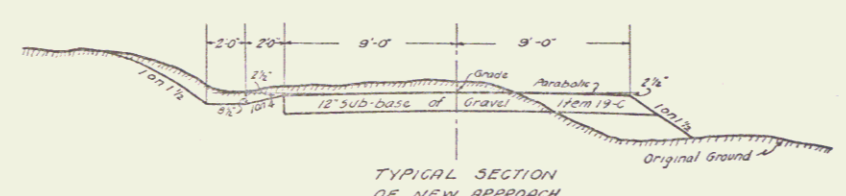
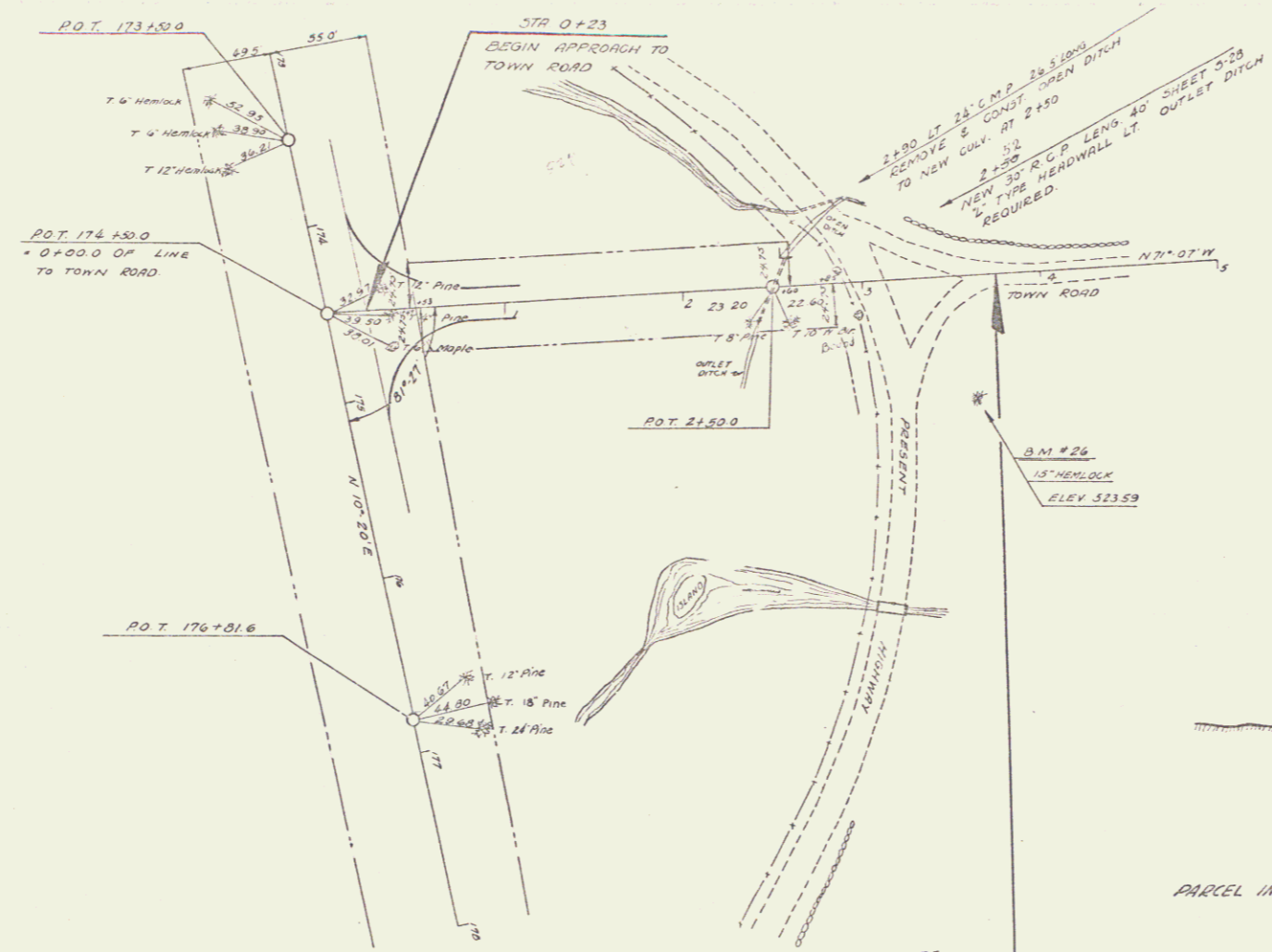
PARTIAL  
 REVISIONS



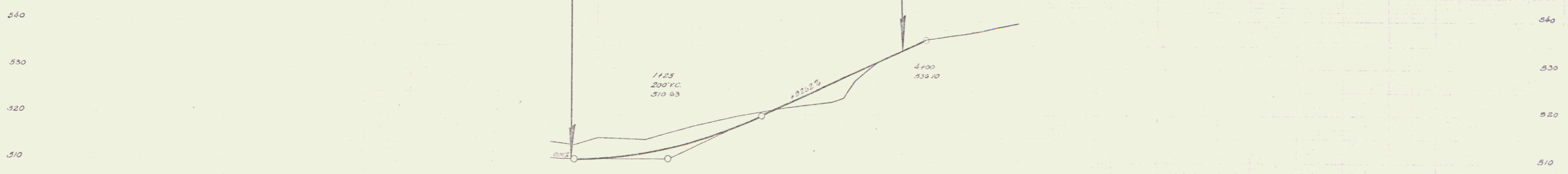
B.M. # 25 SPIKE IN ROOT 12" PINE 42' LT. STA. 165+50 ELEV. 503.18

SERIES F.R.P. NO. 135-0  
SHEET 5 OF 38

3



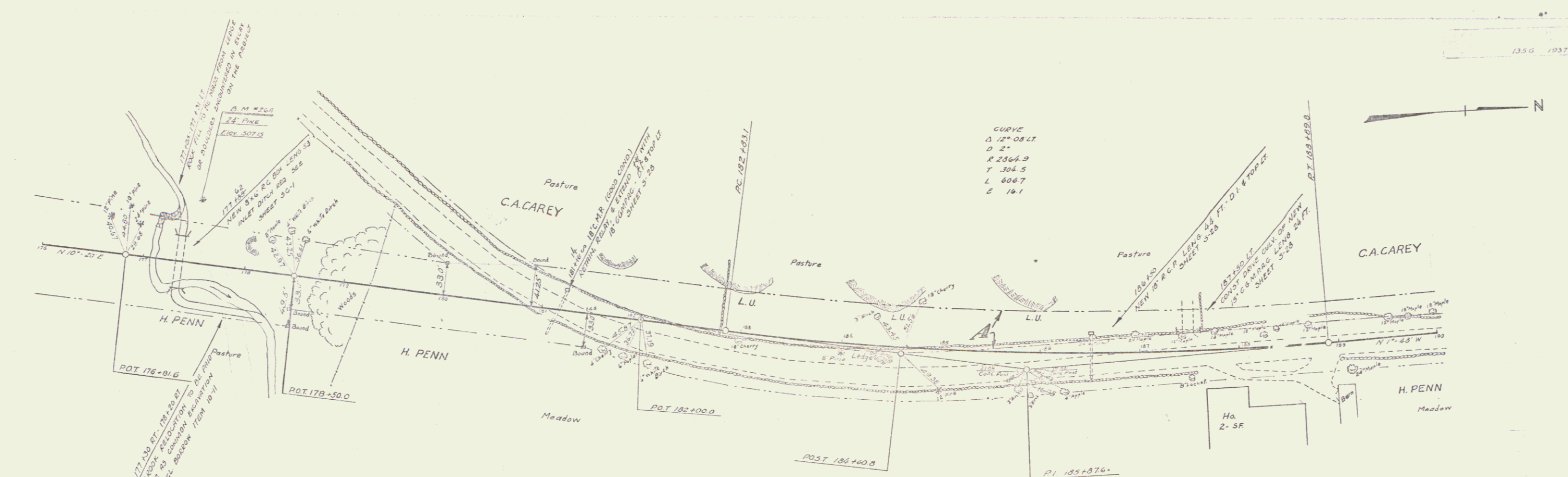
PARCEL	INSTRUMENT	DATE	GRANTOR	GRANTEE	RECORDED	REMARKS
					BOOK	DATE



Station	Elevation
0+23	310.02
0+50	310.63
1+00	311.24
1+50	317.72
2+00	323.59
2+50	329.46
3+00	335.33
3+75	336.10

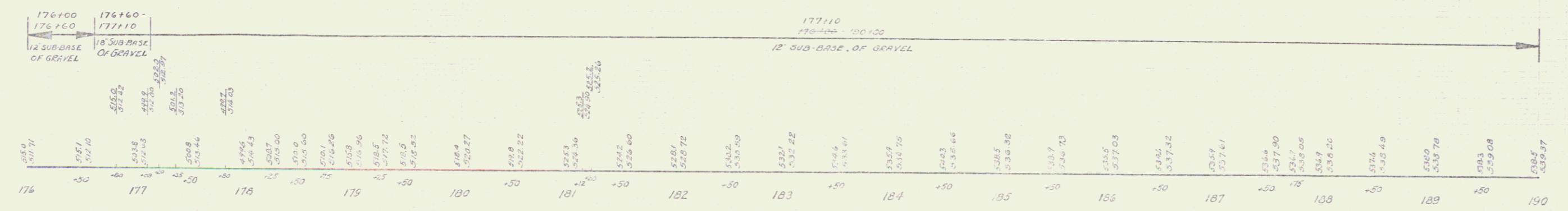
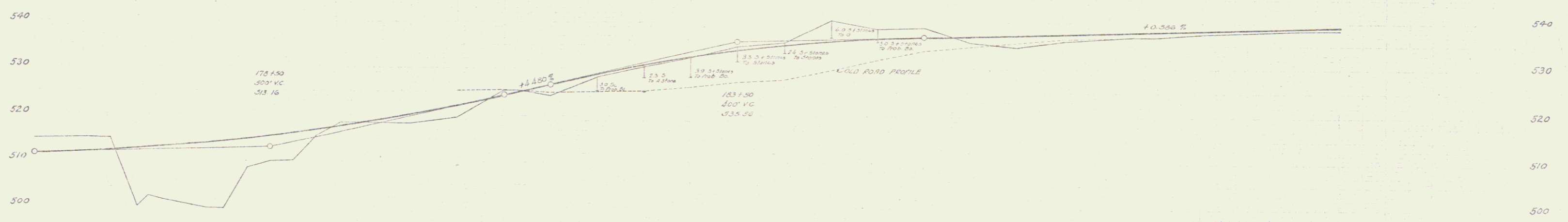
D.M. #26 SPIKE IN ROOT OF 15' HENLOCK 60 FT RT STA 3+00 ELEV 323.59

APPROX  
1935



CURVE  
Δ 12° 08' 17  
D 2'  
R 2564.9  
T 304.5  
L 6067  
E 161

PARCEL	INSTRUMENT	DATE	GRANTOR	GRANTEE	RECORDED
A	G.C.O.	4-29-37	C.A. CAREY	ROCKINGHAM	BOOK PAGE DATE 75 390 5-1-37



3/4" x 2 1/4" Spike in Root of 24" Pine 63' Lt of Sta 177+50 Elev 507.15

5

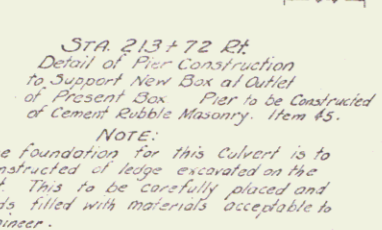
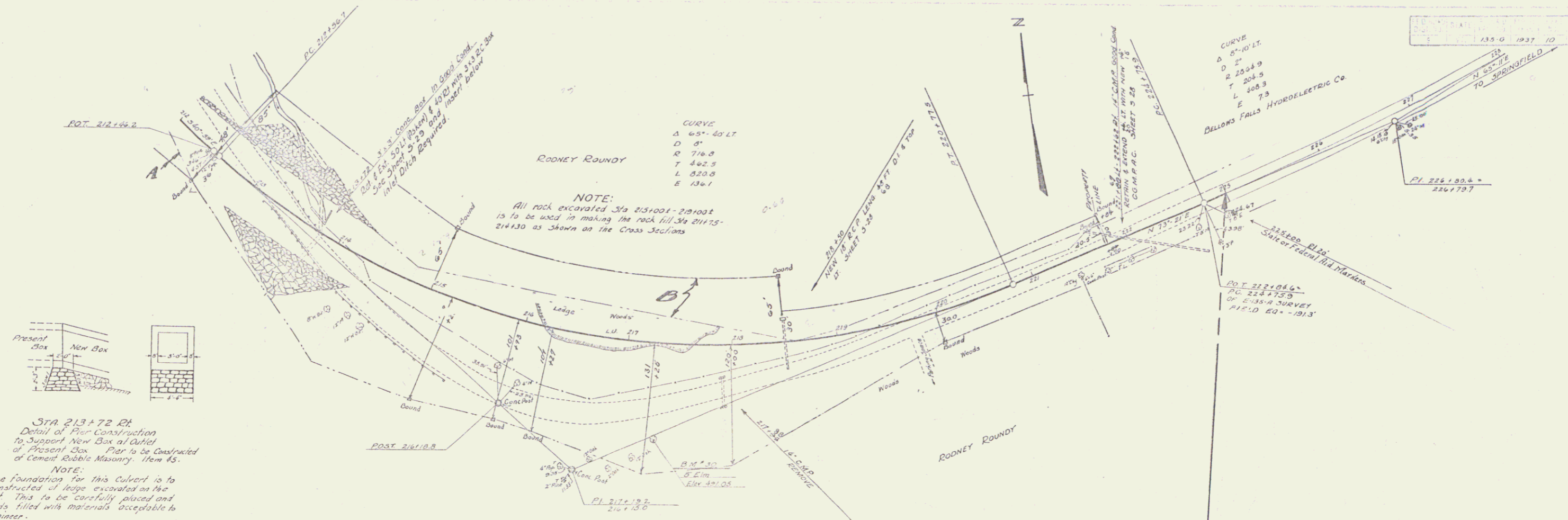




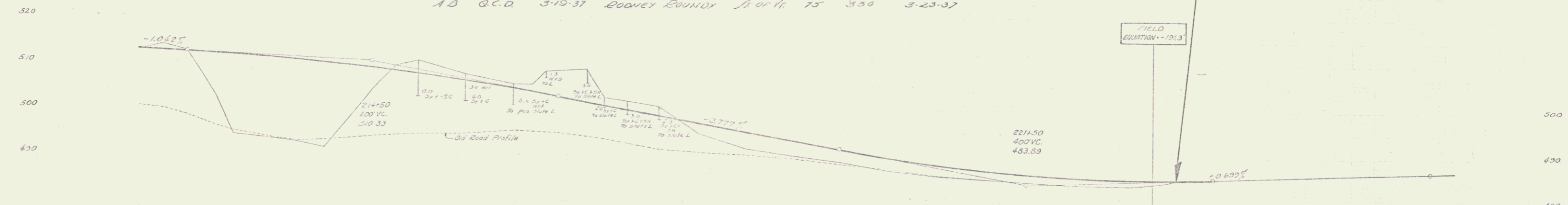
Sheet  
135-G

Sheet  
135-G

Sheet  
135-G



PARCEL INSTRUMENT DATE	GRANTOR	GRANTEE	RECORDED BOOK PAGE DATE	REMARKS
A.D. Q.C.D. 3-10-37	RODNEY ROUNDY	J. OF H. 75	350 3-23-37	



**212+00 - 225+00**  
12' SUB-BASE OF CONCRETE

212+00	492.27
212+05	492.07
212+10	491.87
212+15	491.67
212+20	491.47
212+25	491.27
212+30	491.07
212+35	490.87
212+40	490.67
212+45	490.47
212+50	490.27
212+55	490.07
212+60	489.87
212+65	489.67
212+70	489.47
212+75	489.27
212+80	489.07
212+85	488.87
212+90	488.67
212+95	488.47
213+00	488.27
213+05	488.07
213+10	487.87
213+15	487.67
213+20	487.47
213+25	487.27
213+30	487.07
213+35	486.87
213+40	486.67
213+45	486.47
213+50	486.27
213+55	486.07
213+60	485.87
213+65	485.67
213+70	485.47
213+75	485.27
213+80	485.07
213+85	484.87
213+90	484.67
213+95	484.47
214+00	484.27
214+05	484.07
214+10	483.87
214+15	483.67
214+20	483.47
214+25	483.27
214+30	483.07
214+35	482.87
214+40	482.67
214+45	482.47
214+50	482.27
214+55	482.07
214+60	481.87
214+65	481.67
214+70	481.47
214+75	481.27
214+80	481.07
214+85	480.87
214+90	480.67
214+95	480.47
215+00	480.27
215+05	480.07
215+10	479.87
215+15	479.67
215+20	479.47
215+25	479.27
215+30	479.07
215+35	478.87
215+40	478.67
215+45	478.47
215+50	478.27
215+55	478.07
215+60	477.87
215+65	477.67
215+70	477.47
215+75	477.27
215+80	477.07
215+85	476.87
215+90	476.67
215+95	476.47
216+00	476.27
216+05	476.07
216+10	475.87
216+15	475.67
216+20	475.47
216+25	475.27
216+30	475.07
216+35	474.87
216+40	474.67
216+45	474.47
216+50	474.27
216+55	474.07
216+60	473.87
216+65	473.67
216+70	473.47
216+75	473.27
216+80	473.07
216+85	472.87
216+90	472.67
216+95	472.47
217+00	472.27
217+05	472.07
217+10	471.87
217+15	471.67
217+20	471.47
217+25	471.27
217+30	471.07
217+35	470.87
217+40	470.67
217+45	470.47
217+50	470.27
217+55	470.07
217+60	469.87
217+65	469.67
217+70	469.47
217+75	469.27
217+80	469.07
217+85	468.87
217+90	468.67
217+95	468.47
218+00	468.27
218+05	468.07
218+10	467.87
218+15	467.67
218+20	467.47
218+25	467.27
218+30	467.07
218+35	466.87
218+40	466.67
218+45	466.47
218+50	466.27
218+55	466.07
218+60	465.87
218+65	465.67
218+70	465.47
218+75	465.27
218+80	465.07
218+85	464.87
218+90	464.67
218+95	464.47
219+00	464.27
219+05	464.07
219+10	463.87
219+15	463.67
219+20	463.47
219+25	463.27
219+30	463.07
219+35	462.87
219+40	462.67
219+45	462.47
219+50	462.27
219+55	462.07
219+60	461.87
219+65	461.67
219+70	461.47
219+75	461.27
219+80	461.07
219+85	460.87
219+90	460.67
219+95	460.47
220+00	460.27
220+05	460.07
220+10	459.87
220+15	459.67
220+20	459.47
220+25	459.27
220+30	459.07
220+35	458.87
220+40	458.67
220+45	458.47
220+50	458.27
220+55	458.07
220+60	457.87
220+65	457.67
220+70	457.47
220+75	457.27
220+80	457.07
220+85	456.87
220+90	456.67
220+95	456.47
221+00	456.27
221+05	456.07
221+10	455.87
221+15	455.67
221+20	455.47
221+25	455.27
221+30	455.07
221+35	454.87
221+40	454.67
221+45	454.47
221+50	454.27
221+55	454.07
221+60	453.87
221+65	453.67
221+70	453.47
221+75	453.27
221+80	453.07
221+85	452.87
221+90	452.67
221+95	452.47
222+00	452.27
222+05	452.07
222+10	451.87
222+15	451.67
222+20	451.47
222+25	451.27
222+30	451.07
222+35	450.87
222+40	450.67
222+45	450.47
222+50	450.27
222+55	450.07
222+60	449.87
222+65	449.67
222+70	449.47
222+75	449.27
222+80	449.07
222+85	448.87
222+90	448.67
222+95	448.47
223+00	448.27
223+05	448.07
223+10	447.87
223+15	447.67
223+20	447.47
223+25	447.27
223+30	447.07
223+35	446.87
223+40	446.67
223+45	446.47
223+50	446.27
223+55	446.07
223+60	445.87
223+65	445.67
223+70	445.47
223+75	445.27
223+80	445.07
223+85	444.87
223+90	444.67
223+95	444.47
224+00	444.27
224+05	444.07
224+10	443.87
224+15	443.67
224+20	443.47
224+25	443.27
224+30	443.07
224+35	442.87
224+40	442.67
224+45	442.47
224+50	442.27
224+55	442.07
224+60	441.87
224+65	441.67
224+70	441.47
224+75	441.27
224+80	441.07
224+85	440.87
224+90	440.67
224+95	440.47
225+00	440.27

B.M. #30 SNAKE IN ROOT OF CEDAR 82' LT. STA 217+33 ELEV 491.00

SERIES 135-G NO 135-G  
SHEET 10 OF 38