

INDEX OF SHEETS

SHEET NO.	TITLE PAGE
1	TITLE PAGE
2	TYPICAL CROSS-SECTION OF IMPROVEMENT (2 1/2% GRAVEL MIXED-IN-PLACE SURFACE COURSE WITH REFINED TAR ITEMS 2ND & 24TH)
3	BANKING AND WIDENING TABLES
4-7	PLAN AND PROFILE SHEETS
8	STANDARD SHEET 520; PIPE CULVERTS
9	529; BOX CULVERTS
10	530; GUARD RAIL
11	531; BOUNDARY MARKERS
12	540; BARRICADES, SIGNS & LIGHTS
13-34	CROSS-SECTIONS

Standard Sheet 528 & 529 approved by the Chief Engineer on July 16, 1933.

Standard Sheet 530 approved by the Chief Engineer on Aug. 12, 1933.

Standard Sheet 531 approved by the Chief Engineer on July 25, 1934.

STATE OF VERMONT  
STATE HIGHWAY DEPARTMENT

PLAN AND PROFILE OF PROPOSED  
STATE HIGHWAY

FEDERAL AID PROJECT

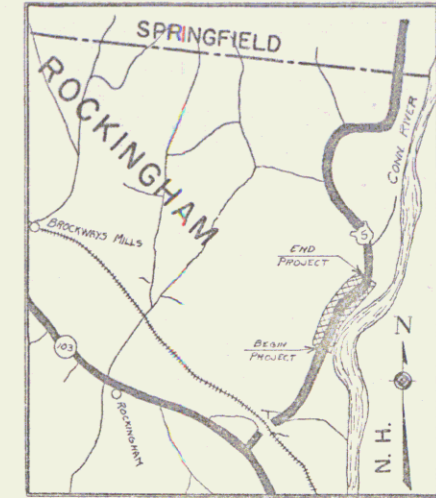
TOWN OF ROCKINGHAM

ROCKINGHAM-SPRINGFIELD ROAD

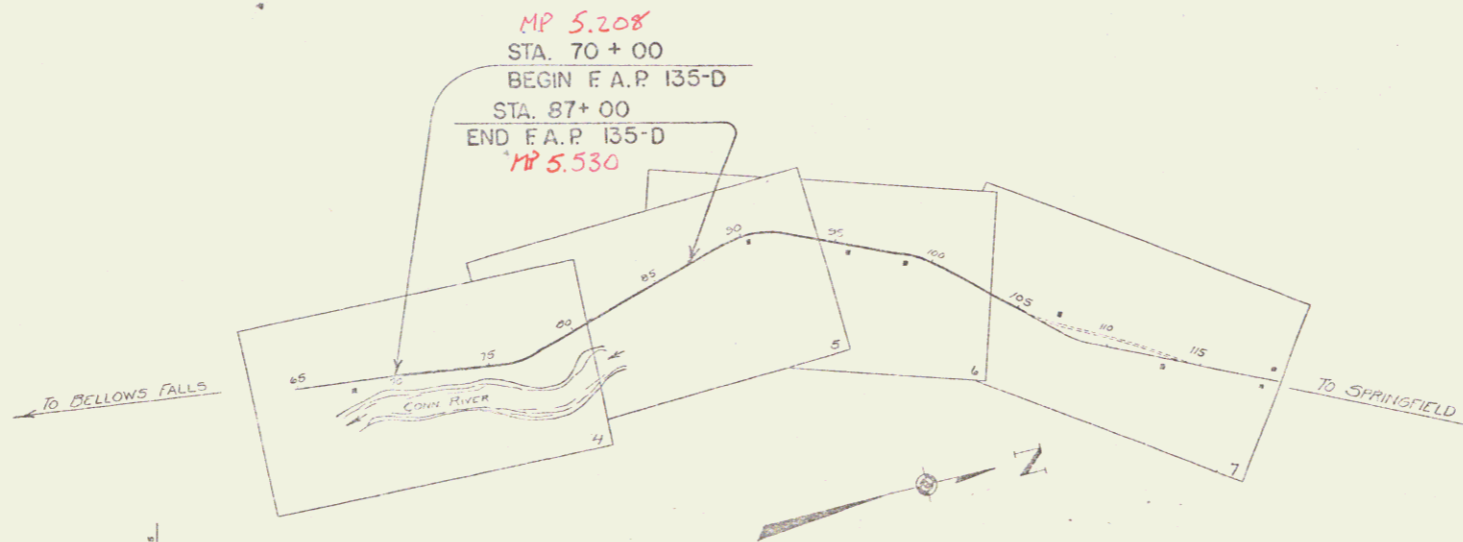
BEGINNING AT A POINT 200± FT. NORTH OF THE RESIDENCE OF W. J. DAYS AND EXTENDING NORTHERLY 0.320 MILES.

LENGTH OF PROJECT 1691.9 FT. = 0.320 MILES

FED. ROAD DIST. NO.	STATE	FED. AID PROJ. NO.	FISCAL YEAR	SHEET NO.	TOTAL SHEETS
9	Vt.	135-D	1936	1	34



Route: US5  
Project: FAP 135-D  
Pin # 992364



CONVENTIONAL SIGNS

COUNTY LINE	GROUND ELEVATION
TOWN LINE	FENCE LINE
STONE WALL	RAILROAD
UNFENCED PROPERTY	TRAVELED WAY
GUARD RAIL	RETAINING WALL
CULVERT	CENTER LINE
DROP INLET	SURVEY LINE
TROLLEY POLE	POWER POLE
TELEPHONE POLE	TREES
HEDGE	

CURVE DATA

DEFLECTION ANGLE	Δ
DEGREE OF CURVE	D
RADIUS OF CURVE	R
TANGENT DISTANCE	T
LENGTH OF CURVE	L
EXTERNAL DISTANCE	E
POINT OF INTERSECTION	P. I.
POINT OF CURVE	P. C.
POINT OF TANGENT	P. T.
POINT ON TANGENT	P. O. T.

SCALES

TITLE	1" = 500'
TYPICAL	1" = 20'
PLAN	1" = 50'
PROFILE	1" = 10'
CROSS-SECTIONS	1" = 5'

These plans are subject to such revisions as may be required by the Bureau of Public Roads or the Commissioner of Highways. Construction is to be carried on in accordance with the plans and Standard Road and Bridge Specifications of 1935 including all subsequent approved revisions and such revised specifications and special provisions as are submitted with the plans.

Attention of Contractors is called to the fact that the State Highway Board reserves the right to extend this project northerly at the same contract price. Said cost of extension not to exceed 25% of the amount of the contract.

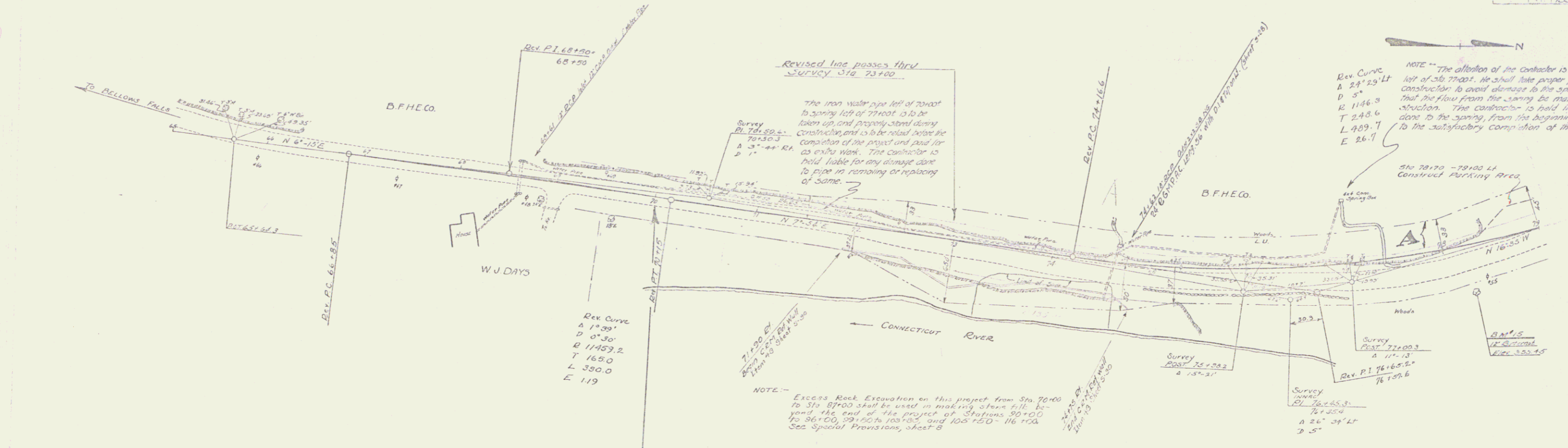
RIGHT-OF-WAY DIVISION  
TOWN FILE  
PERPETUAL  
Route of US5  
(To Be Returned To R.O.W. Division)

APPROVED: *H. E. Sargent*  
August 26, 1935  
COMMISSIONER OF HIGHWAYS  
SUBMITTED BY ORDER OF THE STATE HIGHWAY BOARD

RECOMMENDED  
DISTRICT ENGINEER BUREAU OF PUBLIC ROADS  
RECOMMENDED FOR APPROVAL  
CHIEF ENGINEER BUREAU OF PUBLIC ROADS  
APPROVED  
DIRECTOR BUREAU OF PUBLIC ROADS

CORRECT: August 26, 1935  
SERIES FAP NO. 135-D FILED  
SHEET 1 OF 34

DIST. # 2 PLANS

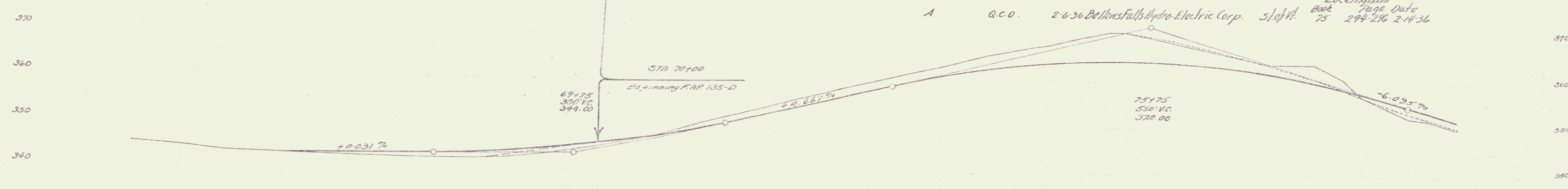


NOTE: The attention of the contractor is called to the spring left of Sta. 70+00. He shall take proper precautions during construction to avoid damage to the spring, as it is necessary that the flow from the spring be maintained during construction. The contractor is held liable for any damage done to the spring, from the beginning of construction to the satisfactory completion of the contract.

Rev Curve  
A 14.29'  
D 0.35'  
R 11453.2  
T 160.0  
L 380.0  
E 1.19

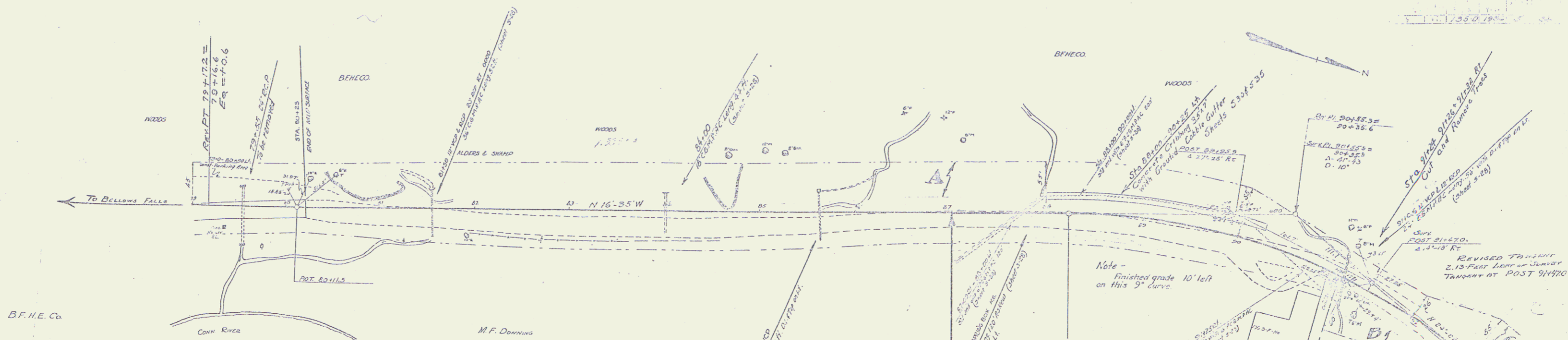
Survey Point 72+00.3  
A 11.13  
L 26.53  
E 2.5

Parcel	Instrument	Date	Grantor	Grantee	Recorded Book	Recorded Page	Remarks
A	a.c.o.	2-6-36	Bellows Falls Hydro-Electric Corp.	S/1944	75	294-296	2-14-36



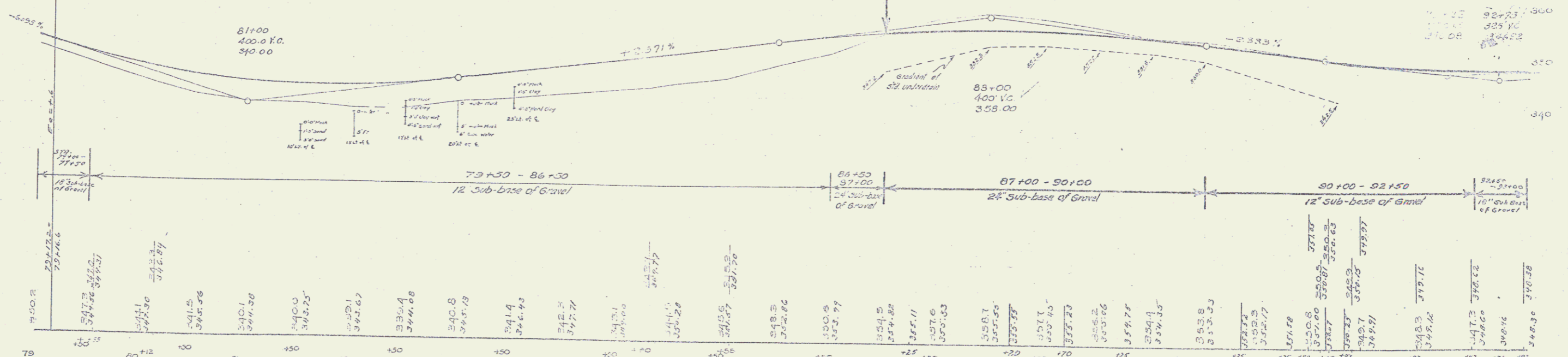
Station	Elevation
65	344.8
66	344.1
67	343.2
68	343.0
69	342.8
70	342.6
71	342.3
72	342.47
73	342.39
74	342.27
75	342.15
76	342.02
77	341.89
78	341.76
79	341.63
80	341.50
81	341.37
82	341.24
83	341.11
84	340.98
85	340.85
86	340.72
87	340.59
88	340.46
89	340.33
90	340.20
91	340.07
92	339.94
93	339.81
94	339.68
95	339.55
96	339.42
97	339.29
98	339.16
99	339.03
100	338.90
101	338.77
102	338.64
103	338.51
104	338.38
105	338.25
106	338.12
107	337.99
108	337.86
109	337.73
110	337.60
111	337.47
112	337.34
113	337.21
114	337.08
115	336.95
116	336.82
117	336.69
118	336.56
119	336.43
120	336.30
121	336.17
122	336.04
123	335.91
124	335.78
125	335.65
126	335.52
127	335.39
128	335.26
129	335.13
130	335.00

B.M. #15 SPIKE IN ROOT OF 12' BUTTERNUT 50 FT. TO RT. OF STATION 78+18. ELEV 355.45



**NOTE:**  
 Fill from ledge on project FAR 135-D now under construction is used in construction of embankment between 91± and 116±. The contractor of project WPH 135-F is requested to carry on his construction operations so as to permit the contractor of FAR 135-D to have access to these locations during the construction of FAR 135-D.  
 Upon completion of FAR 135-D the sections where rock has been used in the making of embankments will be cross-sectioned by the State.

Parcel	Instrument Data	Grantor	Grantee	Recorded
A-C-C	A.C.D.	2-6-36 Bellows Falls Hydro-Elec. Corp.	State	2-19-36



15 22'± IN ROOT OF 12" BUTTERNUT SOF. RT. OF STA 78+18 - ELEV. 355.40