

INDEX OF SHEETS

SHEET NO.	TITLE PAGE
1	TITLE PAGE
2	TYPICAL CROSS-SECTION OF IMPROVEMENT (2 1/2% GRAVEL MIXED-IN-PLACE SURFACE COURSE WITH REFINED TAR ITEMS 2ND & 24TH)
3	BANKING AND WIDENING TABLES
4-7	PLAN AND PROFILE SHEETS
8	STANDARD SHEET 520; PIPE CULVERTS
9	520; BOX CULVERTS
10	530; GUARD RAIL
11	531; BOUNDARY MARKERS
12	540; BARRICADES, SIGNS & LIGHTS
13-34	CROSS-SECTIONS

Standard Sheet 528 & 529 approved by the Chief Engineer on July 16, 1933.
 Standard Sheet 530 approved by the Chief Engineer on Aug. 12, 1933.
 Standard Sheet 531 approved by the Chief Engineer on July 25, 1934.

STATE OF VERMONT
 STATE HIGHWAY DEPARTMENT

PLAN AND PROFILE OF PROPOSED
 STATE HIGHWAY

FEDERAL AID PROJECT

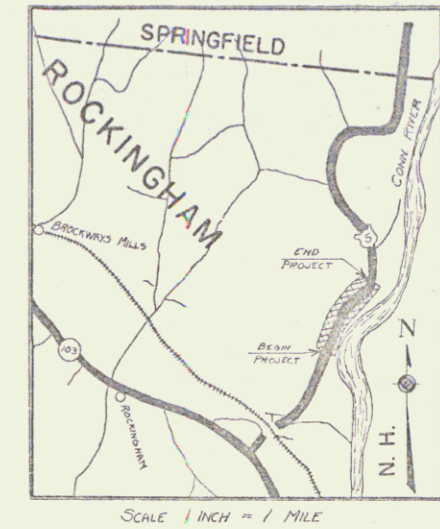
TOWN OF ROCKINGHAM

ROCKINGHAM-SPRINGFIELD ROAD

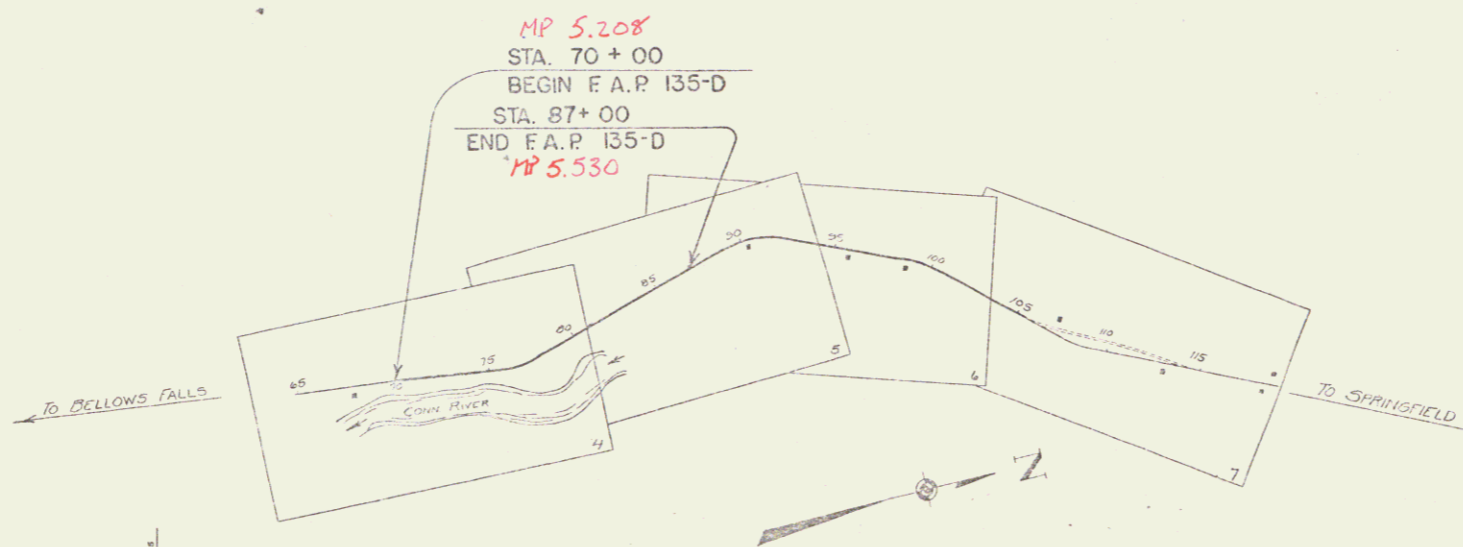
BEGINNING AT A POINT 200± FT. NORTH OF THE RESIDENCE OF W. J. DAYS AND EXTENDING NORTHERLY 0.320 MILES.

LENGTH OF PROJECT 1691.9 FT. = 0.320 MILES

FED. ROAD DIST. NO.	STATE	FED. AID PROJ. NO.	FISCAL YEAR	SHEET NO.	TOTAL SHEETS
9	Vt.	135-D	1936	1	34



Route: US5
 Project: FAP 135-D
 Pin # 992364



CONVENTIONAL SIGNS

COUNTY LINE	GROUND ELEVATION
TOWN LINE	FENCE LINE
STONE WALL	RAILROAD
UNFENCED PROPERTY	TRAVELED WAY
GUARD RAIL	RETAINING WALL
RAILROAD	CENTER LINE
TRAVELED WAY	SURVEY LINE
RETAINING WALL	CULVERT
CENTER LINE	DROP INLET
SURVEY LINE	TROLLEY POLE
CULVERT	POWER POLE
DROP INLET	TELEPHONE POLE
TROLLEY POLE	TREES
POWER POLE	HEDGE
TELEPHONE POLE	
TREES	
HEDGE	

SCALES

TITLE	1" = 500'
TYPICAL	1" = 20'
PLAN	1" = 50'
PROFILE	1" = 10'
CROSS-SECTIONS	1" = 5'

These plans are subject to such revisions as may be required by the Bureau of Public Roads or the Commissioner of Highways. Construction is to be carried on in accordance with the plans and Standard Road and Bridge Specifications of 1935 including all subsequent approved revisions and such revised specifications and special provisions as are submitted with the plans.

Attention of Contractors is called to the fact that the State Highway Board reserves the right to extend this project northerly of the same contract price. Said cost of extension not to exceed 25% of the amount of the contract.

RIGHT-OF-WAY DIVISION
 TOWN FILE
 PERPETUAL
 Town of US5
 (To Be Returned To R.O.W. Division)

APPROVED: *H. E. Sargent*
 August 26, 1935
 COMMISSIONER OF HIGHWAYS
 SUBMITTED BY ORDER OF THE STATE HIGHWAY BOARD

RECOMMENDED
 DISTRICT ENGINEER BUREAU OF PUBLIC ROADS
 RECOMMENDED FOR APPROVAL
 CHIEF ENGINEER BUREAU OF PUBLIC ROADS
 APPROVED
 DIRECTOR BUREAU OF PUBLIC ROADS

CORRECT: August 26, 1935
 ROAD ENGINEER
 SERIES FAP NO. 135-D FILED
 SHEET 1 OF 34

DIST. #2 PLANS