

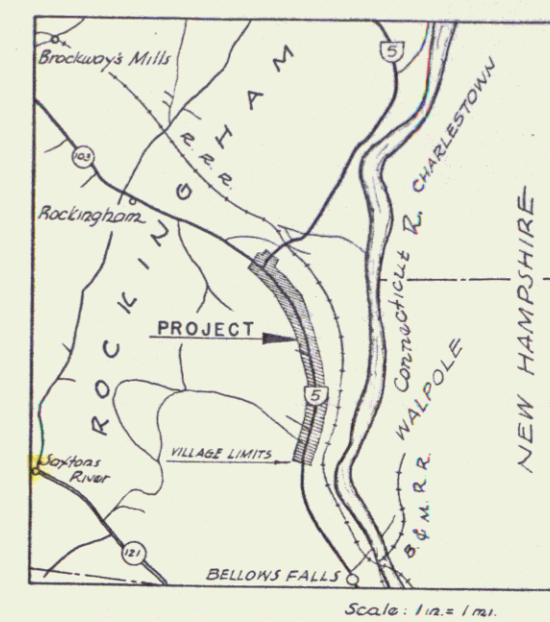
FED. ROAD DIST. NO.	STATE	FED. AID FISCAL YEAR	SHEET NO.	TOTAL SHEETS
9	Vt.	135-J(1) 1941	1	8

INDEX OF SHEETS
 NO. 1 TYPICAL CROSS-SECTION OF IMPROVEMENT
 NO. 2 TYPICAL CROSS-SECTION OF IMPROVEMENT
 NO. 3 PLAN AND PROFILE

STATE OF VERMONT
 STATE HIGHWAY DEPARTMENT

PLAN AND PROFILE OF PROPOSED
 STATE HIGHWAY
 FEDERAL AID PROJECT
 ROADSIDE IMPROVEMENT
 TOWN OF ROCKINGHAM

Pin# 99R3(23)
 Project: SN FAP 135J(2)



BEGINNING AT THE BELLOWS FALLS VILLAGE LIMITS ON ROUTE U.S. 5 AND
 EXTENDING NORTHERLY 2.219 MILES TO A POINT 616.0 FEET BEYOND THE
 INTERSECTION OF STATE ROUTE 103 AND ROUTE U.S. 5

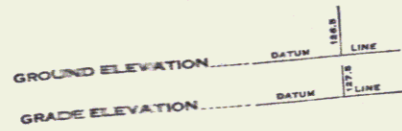
LENGTH OF MAIN LINE ✓ 11,718.4 FEET = 2.219 MILES
 LENGTH OF "B" LINE ✓ 1,116.0 FEET = 0.211 MILES
 TOTAL LENGTH OF PROJECT 12,834.4 FEET = 2.430 MILES

STA 33+83 MP 1.955
 STA 61+00 MP 3.972

RIGHT-OF-WAY DIVISION
 TOWN FILE
 PERPETUAL
 Town of USS
 (To Be Returned To R.O.W. Division)

APPROVED: Mar 24, 1941
 Commissioner of Highways
 SUBMITTED BY ORDER OF THE STATE HIGHWAY BOARD

- CONVENTIONAL SIGNS
- CUT SLOPE
 - FILL SLOPE
 - PROPOSED PLANTING—TREE
 - COUNTY LINE
 - TOWN LINE
 - FENCE LINE
 - STONE WALL
 - UNFENCED PROPERTY
 - GUARD RAIL
 - TRAVELED WAY
 - RAILROAD
 - RETAINING WALL
 - CENTER LINE
 - SURVEY LINE
 - CULVERT
 - DROP INLET
 - TROLLEY POLE
 - POWER POLE
 - TELEPHONE POLE
 - TREES
 - HEDGE



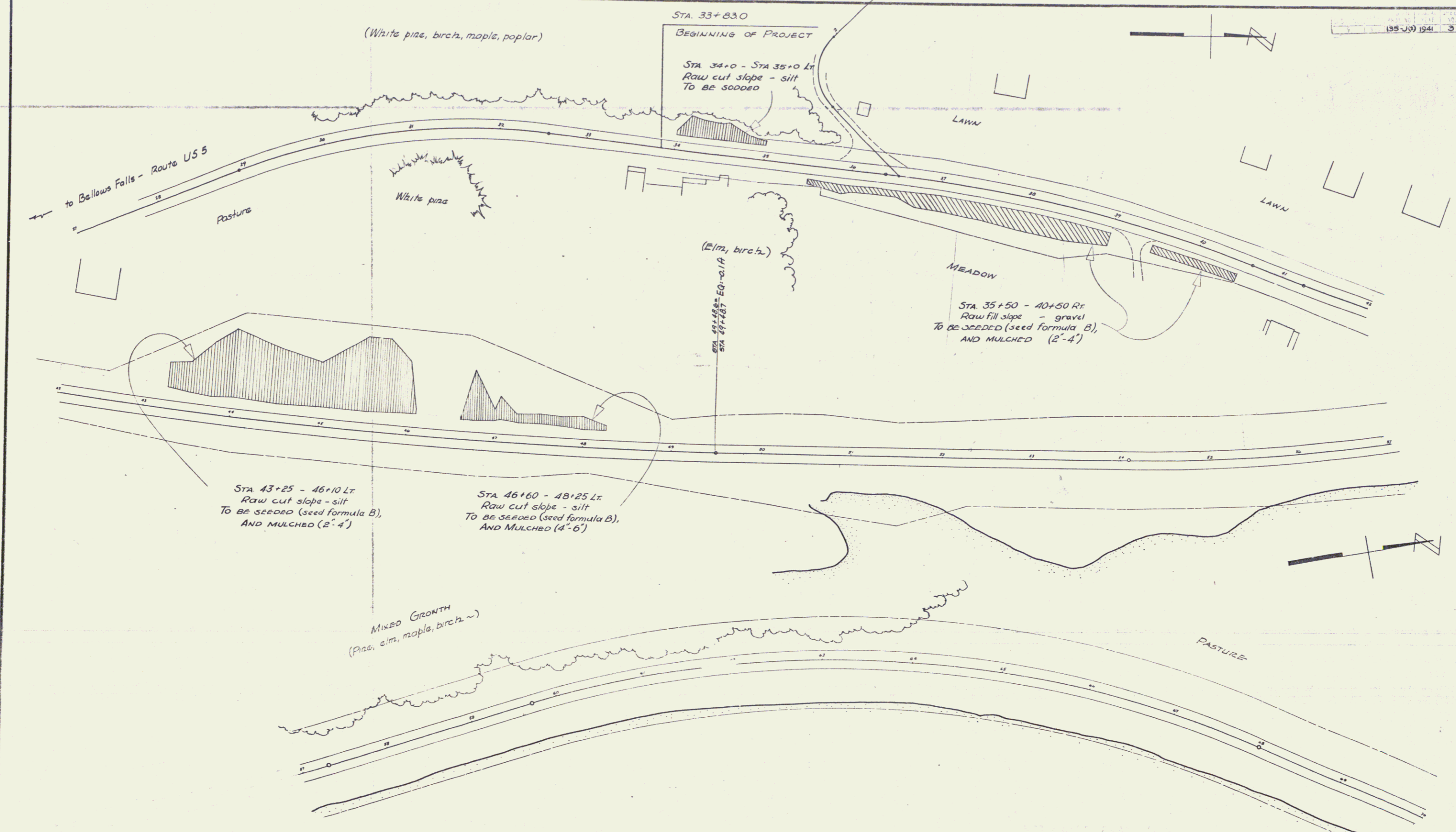
- CURVE DATA
- DEFLECTION ANGLE..... Δ
 - DEGREE OF CURVE..... D
 - RADIUS OF CURVE..... R
 - TANGENT DISTANCE..... T
 - LENGTH OF CURVE..... L
 - EXTERNAL DISTANCE..... E
 - POINT OF INTERSECTION..... P. I.
 - POINT OF CURVE..... P. C.
 - POINT OF TANGENT..... P. T.
 - POINT ON TANGENT..... P. O. T.

SCALES

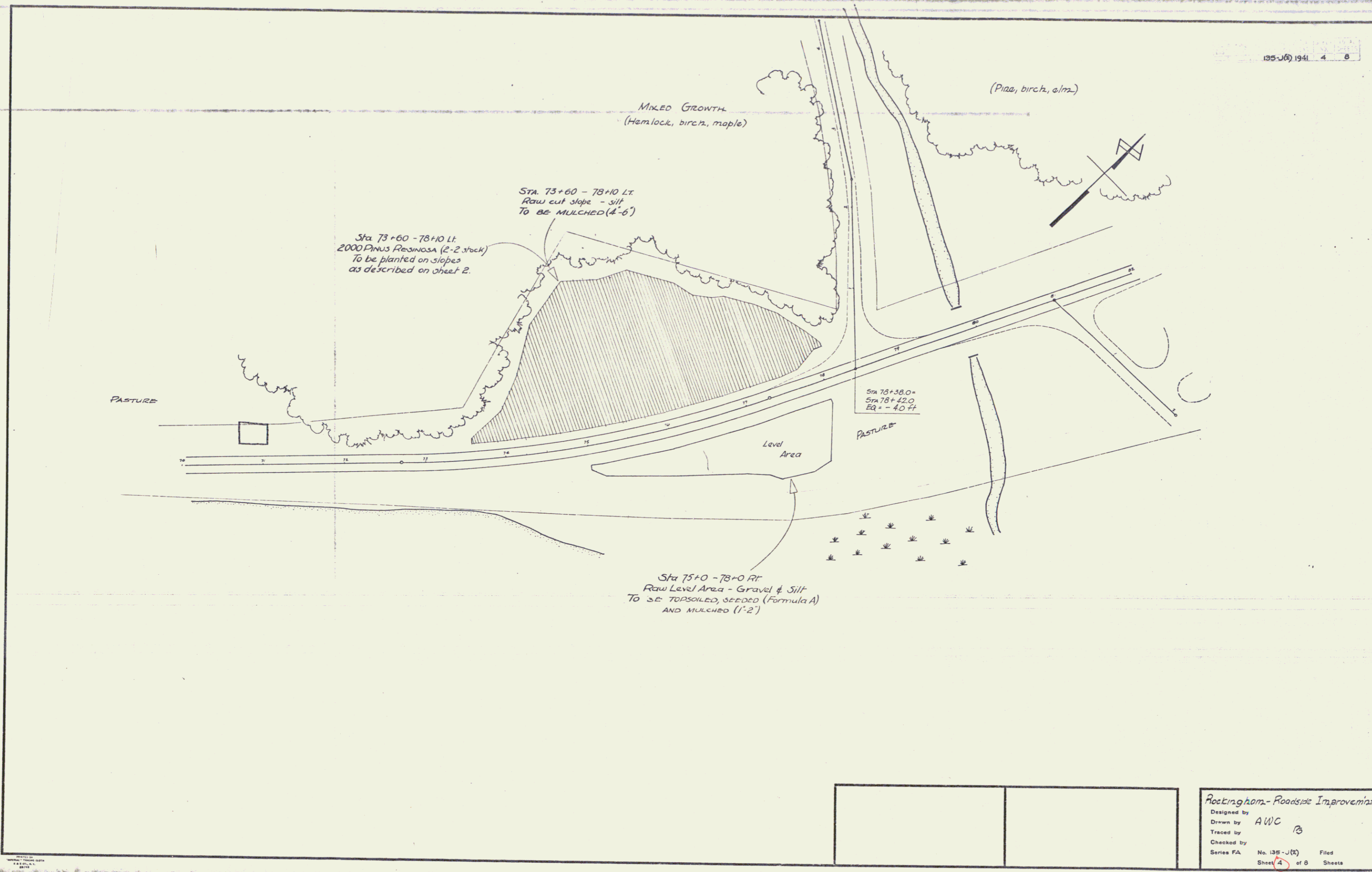
TITLE	1" = 100'
TYPICAL	1" = 8'
PLAN	1" = 50'
PROFILE HORIZONTAL	1" = 50'
PROFILE VERTICAL	1" = 10'
CROSS SECTIONS	1" = 10'

THESE PLANS ARE SUBJECT TO SUCH REVISIONS AS MAY BE REQUIRED BY THE PUBLIC ROADS ADMINISTRATION OR THE COMMISSIONER OF HIGHWAYS.
 CONSTRUCTION IS TO BE CARRIED ON IN ACCORDANCE WITH THE PLANS AND THE STANDARD ROAD AND BRIDGE SPECIFICATIONS OF 1936, AS APPROVED DECEMBER 29TH, 1936 BY THE PUBLIC ROADS ADMINISTRATION, INCLUDING ALL SUBSEQUENT APPROVED REVISIONS AND SUCH REVISED SPECIFICATIONS AND SPECIAL PROVISIONS AS ARE SUBMITTED WITH THE PLANS.

APPROVED: [Signature] ROAD ENGINEER
 APPROVED: [Signature] DISTRICT HIGHWAY COMMISSIONER
 SERIES FA NO. 135-J(1) FILED
 SHEET 1 OF 8

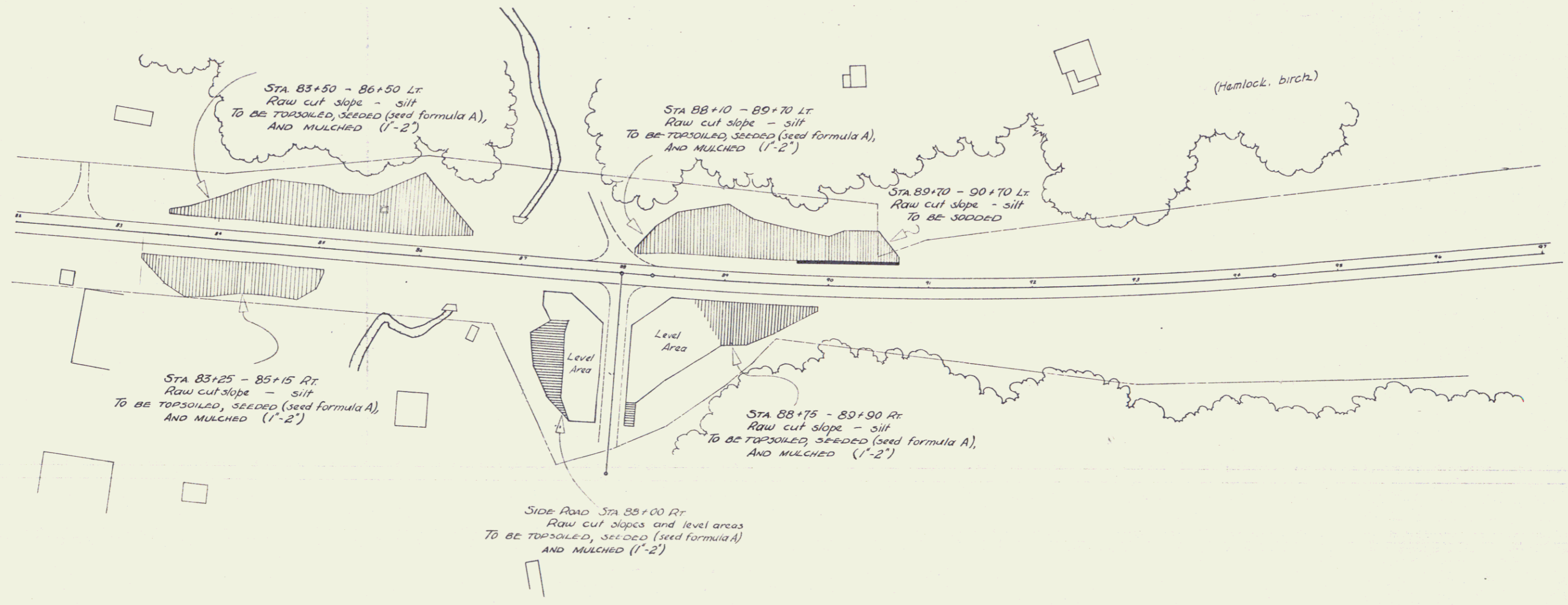


Rockingham Roadside Improvement
 Drawn by AWC B
 Traced by
 Checked by
 Series FA No. 135-J9
 Sheet 3 of 8 Sheets



Rockingham - Roadside Improvement
 Designed by
 Drawn by AWC
 Traced by
 Checked by
 Series FA No. 135-J(6) Filed
 Sheet 4 of 8 Sheets

DATE	BY	NO.	REVISION
1953	AWC	3	



STA 83+50 - 86+50 Lt
Raw cut slope - silt
TO BE TOPSOILED, SEEDED (seed formula A),
AND MULCHED (1'-2")

STA 88+10 - 89+70 Lt
Raw cut slope - silt
TO BE TOPSOILED, SEEDED (seed formula A),
AND MULCHED (1'-2")

STA 89+70 - 90+70 Lt
Raw cut slope - silt
TO BE SODDED

STA 83+25 - 85+15 Rt
Raw cut slope - silt
TO BE TOPSOILED, SEEDED (seed formula A),
AND MULCHED (1'-2")

STA 88+75 - 89+90 Rt
Raw cut slope - silt
TO BE TOPSOILED, SEEDED (seed formula A),
AND MULCHED (1'-2")

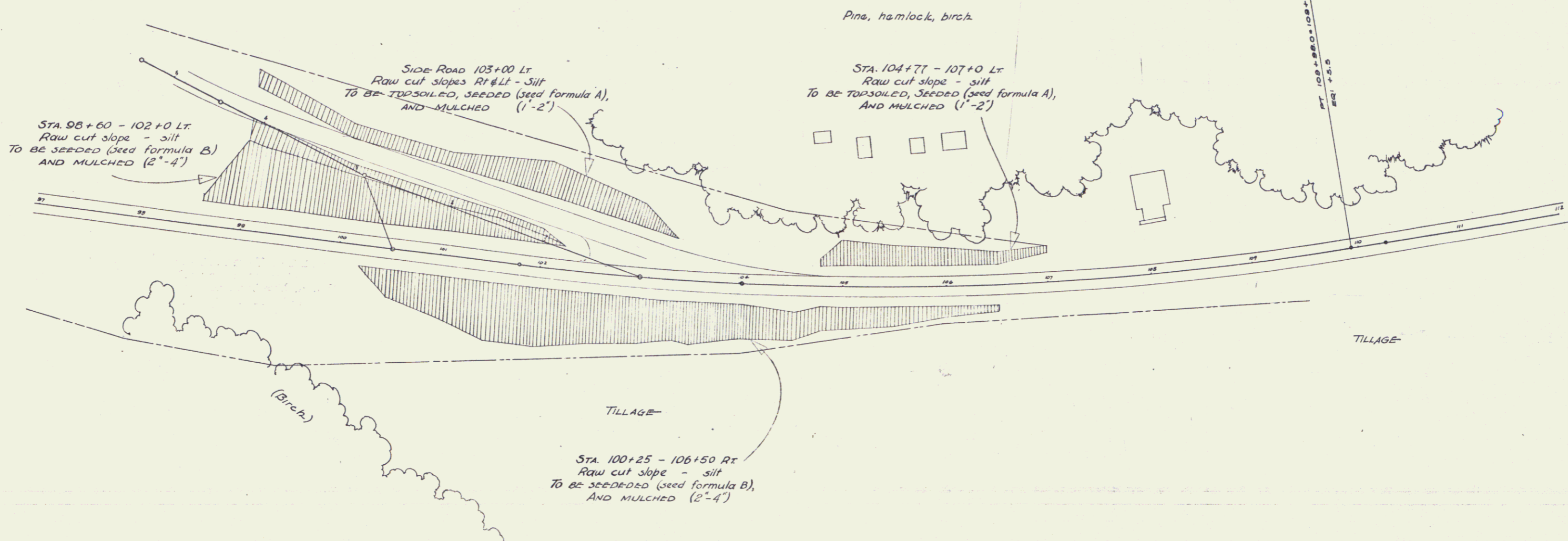
SIDE ROAD STA 88+00 Rt
Raw cut slopes and level areas
TO BE TOPSOILED, SEEDED (seed formula A)
AND MULCHED (1'-2")

(Hamlock, birch)

Level Area

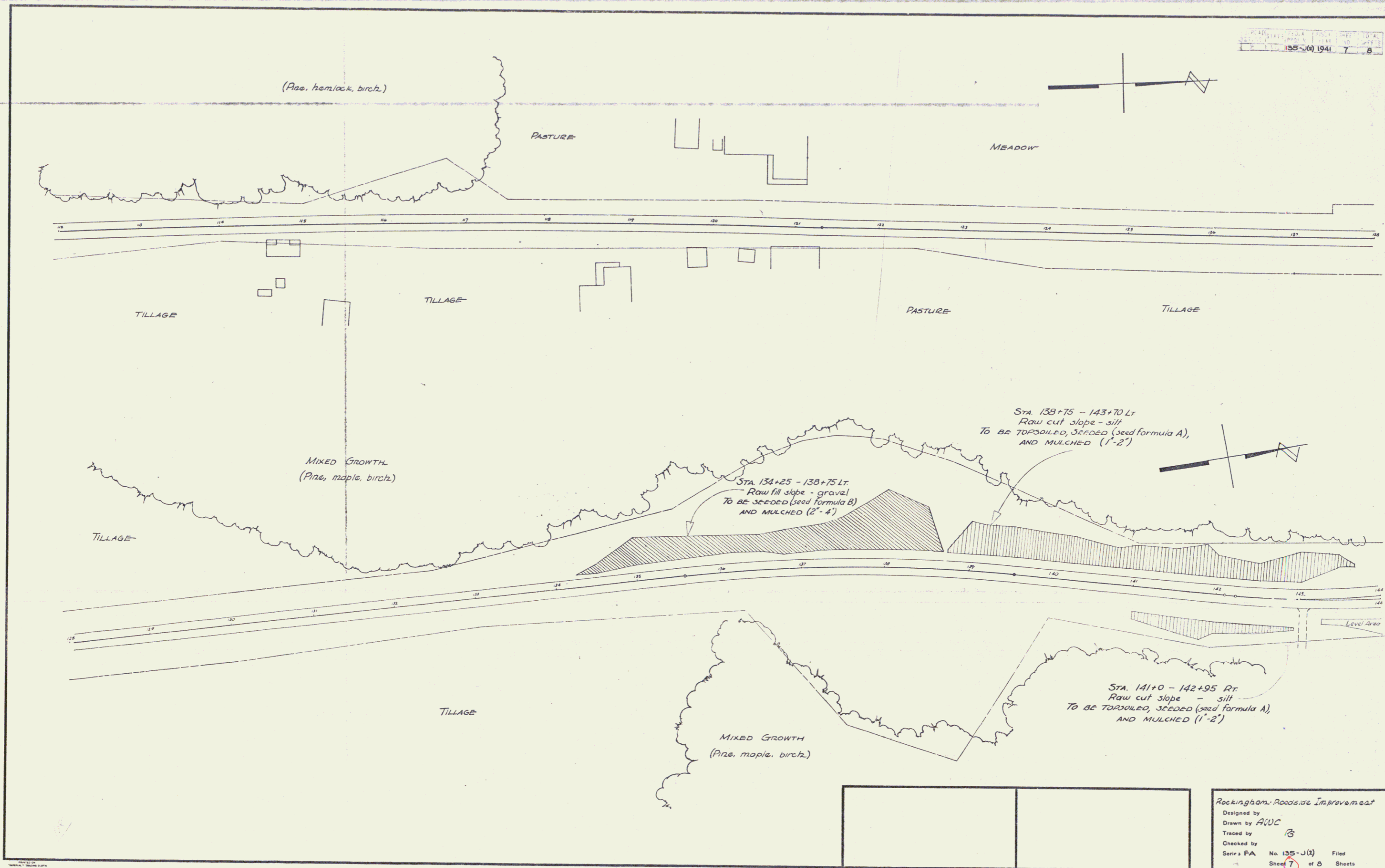
Level Area

Rockingham Roadside Improvement
Designed by
Drawn by AWC
Traced by B
Checked by
Series FA No. 135-J(3) Filed
Sheet 5 of 8 Sheets

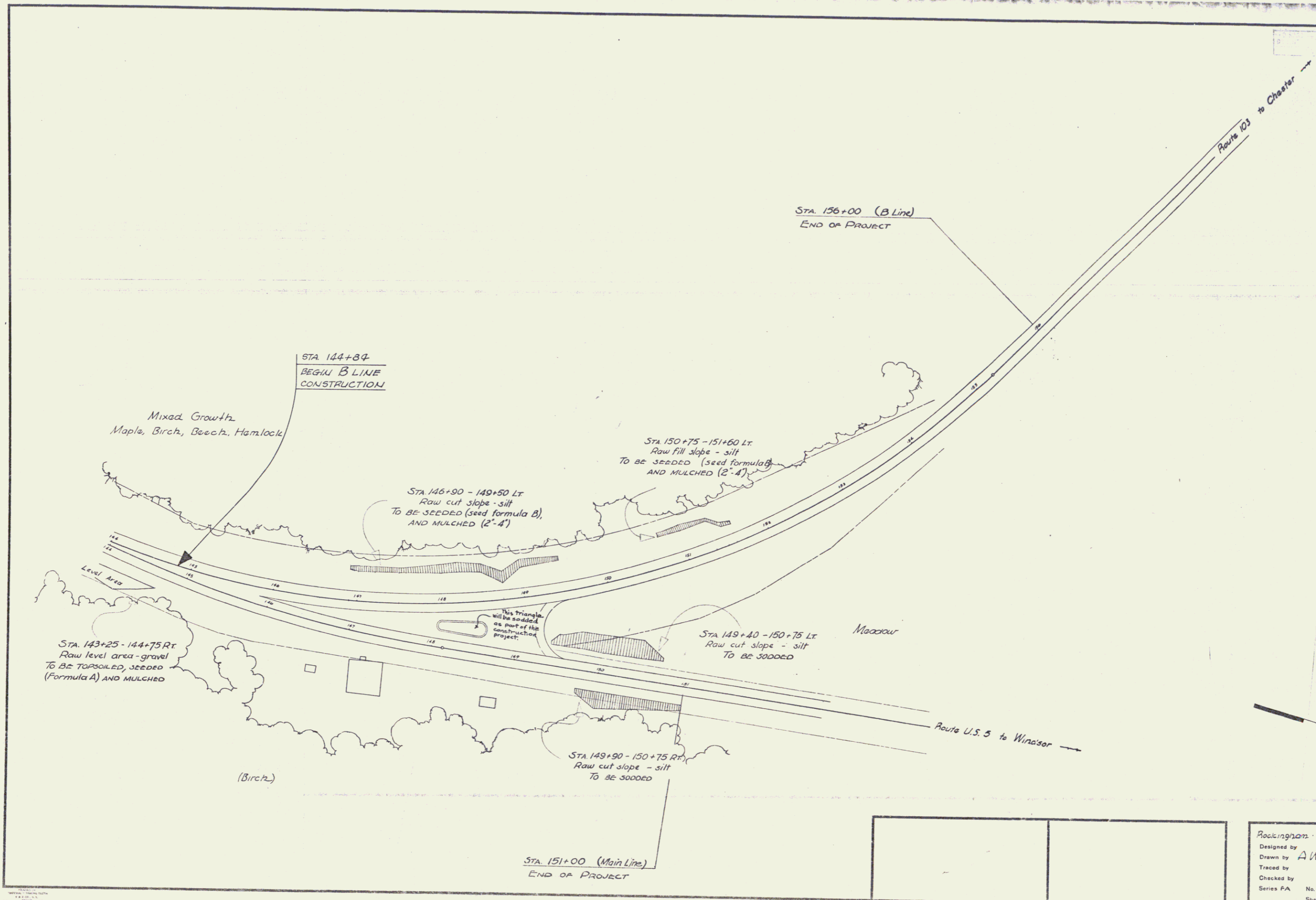


--	--

Rockingham Roadside Improvement
 Designed by
 Drawn by **AWC**
 Traced by **RS**
 Checked by
 Series FA No. 135-J (5) Filed
 Sheet **6** of 8 Sheets



Rockingham Roadside Improvement
 Designed by
 Drawn by *AWC*
 Traced by *B*
 Checked by
 Series FA No. 135-J(4) Filed
 Sheet 7 of 8 Sheets



Rockingham Roadside Improvement			
Designed by	AWC		
Drawn by	RG		
Traced by			
Checked by			
Series P.A.	No. 135-J (2)	Filed	
	Sheet 8	of 8	Sheets