

132  
 1944

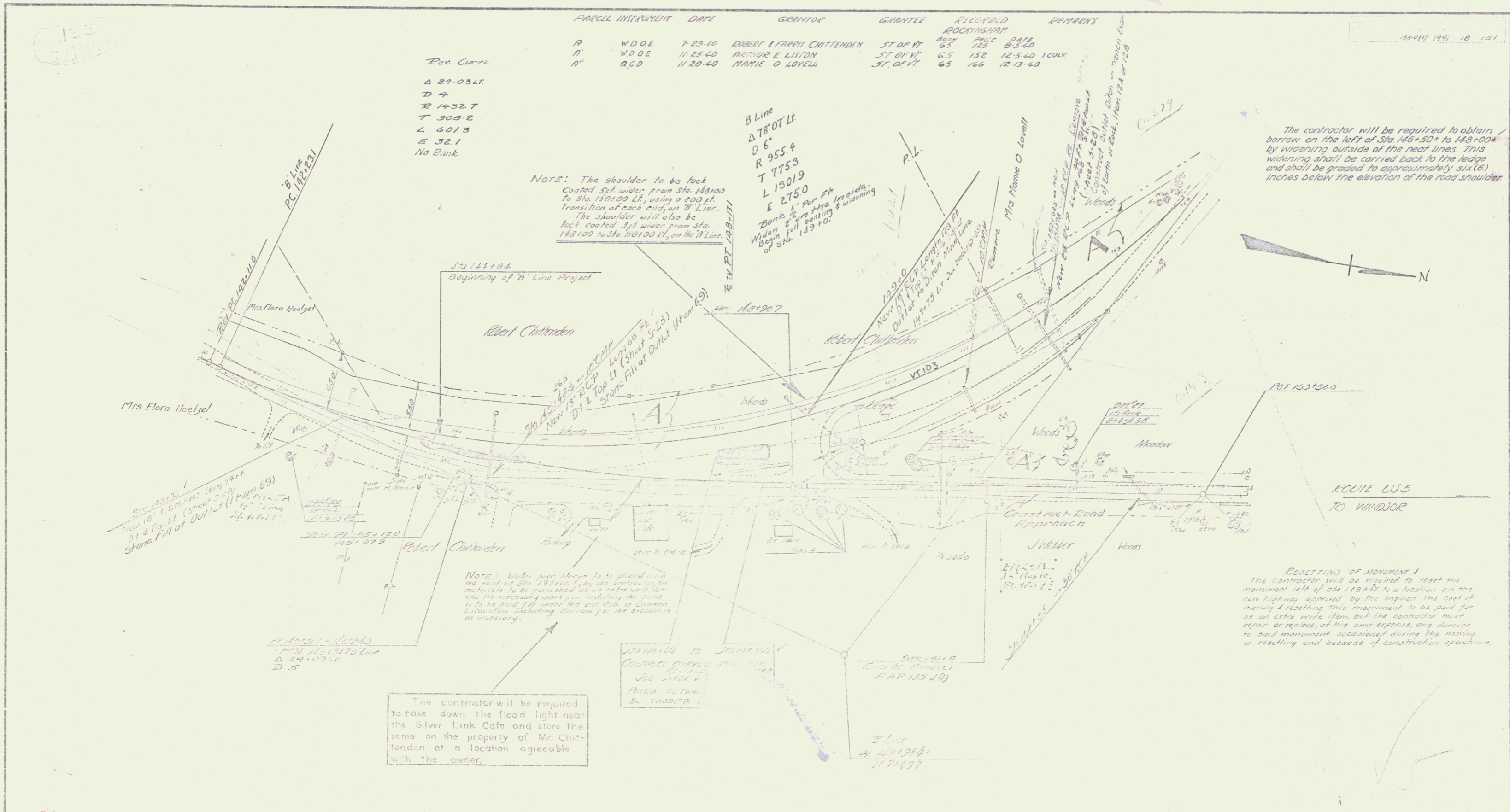
PARCEL	INSTRUMENT	DATE	GRANTOR	GRANTEE	RECORDED BOOKINGHAM	REMARKS
A	W D O E	7-23-40	ROBERT E FRANK CHITTENDEN	ST OF VT	65 125	8-3-40
A'	W D O E	11-25-40	ARTHUR E LITTON	ST OF VT	65 152	12-5-40 100x1
A''	R G D	11-20-40	MARIE O LOVELL	ST OF VT	65 166	12-13-40

Ret Curve  
 Δ 29-03.4  
 D 4  
 R 1432.7  
 T 305.2  
 L 601.3  
 E 32.1  
 No Bank

Note: The shoulder to be lock coated 3/4" wider from sta. 148100 to sta. 150100 ft, using a 200 ft. transition of each end, on B' Line. The shoulder will also be lock coated 3/4" wider from sta. 148100 to sta. 150100 ft, on the A' Line.

B Line  
 Δ 78° 07' 11"  
 D 6'  
 R 955.4  
 T 775.3  
 L 1501.9  
 E 275.0  
 Bank 2' on top of grade  
 Widen 2' on top of banking & widening of sta. 149100

The contractor will be required to obtain borrow on the left of Sta 148100 to 149100 by widening outside of the road lines. This widening shall be carried back to the ledge and shall be graded to approximately six (6) inches below the elevation of the road shoulder.



NOTE: Water pipe above to be placed under the road of Sta. 147100. The contractor has the duty to be provided an extra soil line and the necessary work including the going to the hole for water the full depth of ground excavation including drainage pipe excavation as necessary.

The contractor will be required to take down the flood light near the Silver Link Cafe and store the same on the property of Mr. Chittenden at a location agreeable with the owner.

RESETTING OF MONUMENT J  
 The contractor will be required to reset the monument left of sta. 148100 to a location on the new highway approved by the engineer. The cost of moving & resetting this monument to be paid for as an extra work item, but the contractor must repair or replace, at his own expense, any damage to said monument occasioned during the moving or resetting and because of construction operations.

AMPS SAME IN FOOT OF ROAD SPANST-SHRT 0.14225

1st 2A	12.110	12.110	12.110
2nd 2A	12.110	12.110	12.110
3rd 2A	12.110	12.110	12.110
4th 2A	12.110	12.110	12.110

ESTIMATED QUANTITIES	

BOOKINGHAM  
 Surveyed by G. L. LAMM  
 Located by J. J. RANNEY  
 Drawn by E. L. LAMM  
 Traced by E. L. LAMM  
 Checked by  
 Date 10/27/44