

CONCRETE GUTTER REQUIRED

STATION	L or R	CONC A	STEEL
6+00-7+00	LT	8.0	150"

CONCRETE CURBS + GUTTER REQUIRED

STATIONS	L or R	LENGTH	CONC. A	STEEL
10+85-13+00	LT	2'15"	14.0	387 lbs
4+12-6+00	LT	1'88"	12.2	358 lbs
7+00-10+10	LT	3'10"	20.2	558 lbs

GRADED COBBLE GUTTER REQUIRED

STATIONS	L or R	LENGTH	WIDTH	AREA
GOV'T 7+00-13+00	RT	600'	4'	266 sq yds
NON GOV'T 6+00-7+00	RT	100'	Variable	44 sq yds

CHANGING ELEVATIONS OF CATCH BASINS

STATION	L or R	PT
10+85	PT	
12+70	LT	

NEW CATCH BASINS REQUIRED

STATION	L or R	C.B.#
10+85	LT	1

DROP INLETS REQUIRED

STA	L or R	CONC. A	STEEL	10" V.C.P.	CONC. CURB	PI	PI - 0.116
4+67	LT	1.64	33	1		Δ 88' 27"	

EXCAVATION AS ENCOUNTERED ON THE PROJECT IS TO BE USED AS SIDE FILL UNLESS PERMITTED BY THE ENGINEER TO USE SAME AS FILL UNDER SLAB. BORROW FROM APPROVED SOURCE AND OF ACCEPTABLE QUALITY IS TO BE USED FOR FILL UNDER SLAB AND FOR SHOULDER CONSTRUCTION.

AT STATIONS AS SHOWN ON LAYOUTS WHERE EXISTING CATCH BASINS ARE RETAINED BUT COVERED BY FILL AND NEW CATCH BASINS OR DROP INLETS CONSTRUCTED, PRESET TOPS ARE TO BE RELEASD OVER THE EXISTING CATCH BASIN OPENINGS AND PAID FOR AS CONCRETE 2" x REINFORCING STEEL. GRATES NOW IN PLACE AT THESE LOCATIONS BECOME THE PROPERTY OF THE STATE OR TOWN WHERE NOT USED IN CONSTRUCTION OF PROJECT.

THE ATTENTION OF THE ENGINEER IS CALLED TO THE USE OF 10% SLOPE AT LOCATIONS SHOWN ON THE CROSS SECTIONS.

REMOVAL OF EXISTING CURBS + GUTTER IS TO BE PAID FOR AS SOLID ROCK EXCAVATION.

A. E. WATSON

Parcel	Kind of Instrument	Date of Instrument	Grantor	Grantee	Recorded	Remarks
#1	A	6-11-31	Alfred E. Watson	St. of H.	Book 428	Page 45

The attention of the Engineer is called to the construction of pavement 11 feet wide with curbs down to pavement. STA 10+14-21+50 RT 33+00-10+00 RT 52+50-30+10 RT 63+50-64+50 RT AS SHOWN ON THE TYPICAL SECTION SHEET 2 AND LAYOUT SHEET 7.

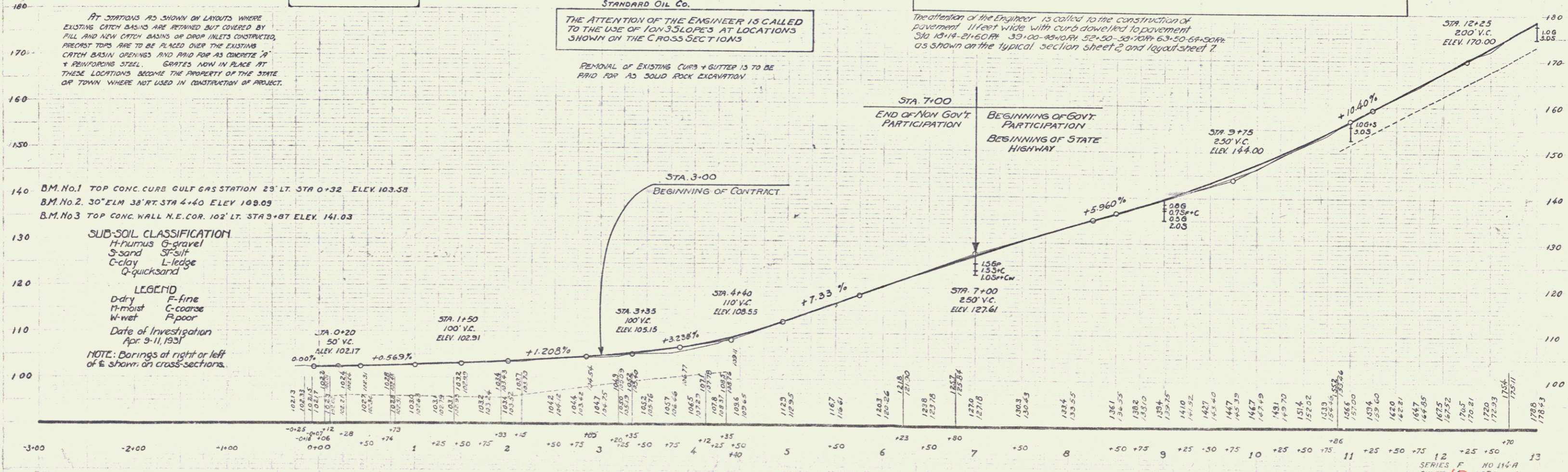
BM.No.1 TOP CONC. CURB GULF GAS STATION 23' LT. STA 0+32 ELEV. 103.58
 BM.No.2 30" ELM 38' RT. STA 4+40 ELEV. 109.09
 BM.No.3 TOP CONC. WALL N.E. COR. 102' LT. STA 3+87 ELEV. 141.03

SUB-SOIL CLASSIFICATION
 H-fluvius G-gravel
 S-sand SF-silt
 C-clay L-ledge
 Q-quicksand

LEGEND
 D-dry F-fine
 M-moist C-coarse
 W-wet P-poor

Date of Investigation
 Apr 3-11, 1937

NOTE: Borings at right or left of & shown on cross-sections.



CONCRETE CURB REQUIRED

STATIONS	L or R	LENG.	CONC. A.	STEEL
18+4-19+22	RT	108'	1.2 cy.	72 lbs.
19+80-20+30	RT	30'	1.0 cy.	60 lbs.
20+50-21+6	RT	34'	0.4 cy.	25 lbs.
21+40-21+60	RT	12'	0.1 cy.	6 lbs.

DROP INLETS REQUIRED

STA.	L or R	CONC. A.	SI. M.	OVCR.	GRATE
20+81	LT.	1.6 cy.	99"	4'	1
22+74	LT.	1.6 cy.	99"	4'	1
24+64	RT.	1.6 cy.	99"	4'	1

GRADED COBBLE GUTTER REQUIRED

STATIONS	L or R	LENG.	WIDTH	AREA
13+00-13+80	RT.	80'	4'-0"	36 sq. yds.

CONCRETE CURB + GUTTER REQUIRED

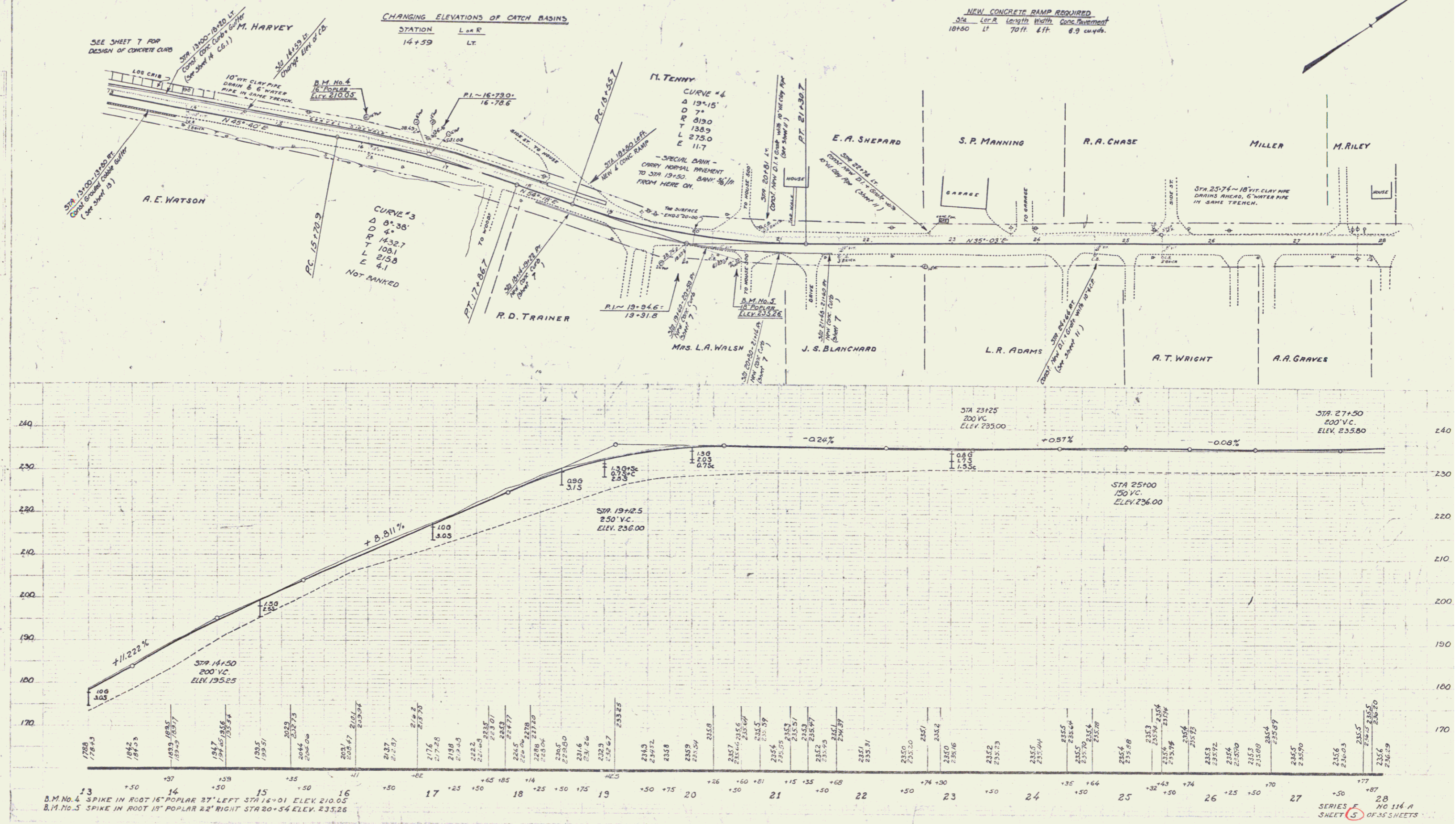
STATIONS	L or R	LENG.	CONC. A.	STEEL
13+00-18+20	LT.	520'	34.0 cy.	336 lbs.

NEW CONCRETE RAMP REQUIRED

STA.	L or R	LENG.	WIDTH	CONC. A.	STEEL
18+50	LT.	70 ft.	4 ft.	8.9 cu yds.	

CHANGING ELEVATIONS OF CATCH BASINS

STATION	L or R
14+59	LT.



13 D.M. No. 4 SPIKE IN ROOT 16" POPLAR 27' LEFT STA 16+01 ELEV. 210.05
 16 D.M. No. 5 SPIKE IN ROOT 19" POPLAR 22' RIGHT STA 20+54 ELEV. 235.26

SERIES 5 NO. 114-A SHEET 5 OF 35 SHEETS

GLUE POSTS OF WOOD REQUIRED		
CURVEY STATION	LEFT	RIGHT
45+00	-	1
45+24	-	1
52+73	-	1

WOOD GUARD RAIL REQUIRED		
CURVEY STATION	LEFT	RIGHT
45+00	24'	-
48+24	24'	-

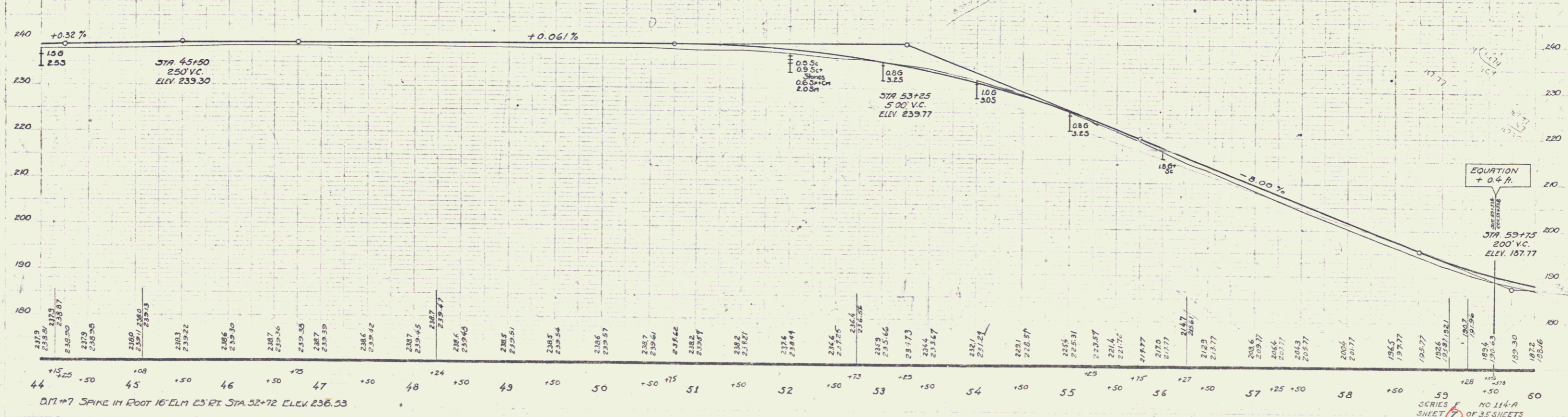
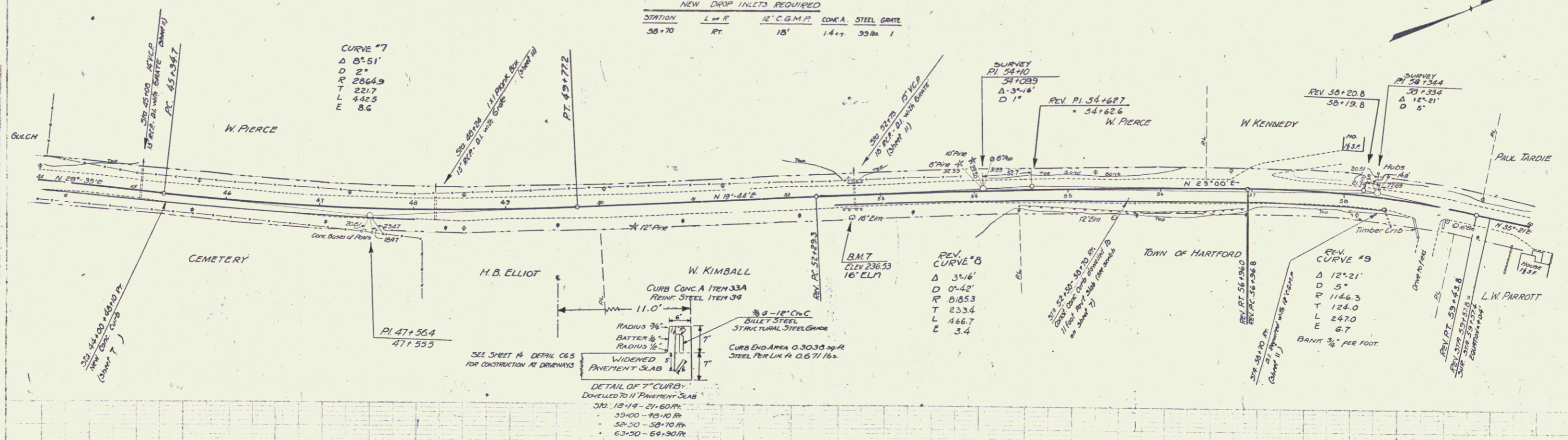
CABLE GUARD RAIL REQUIRED			
STATIONS	LENGTH	CONSTANT	PIV LENGTH
52+50 - 52+90.41	40'	40'	80'

CONCRETE CURB REQUIRED				
STATIONS	L or R	LENS	CONC. A	STEEL
44+00-48+10	RT	4'-10"	4.6 cy	275 lbs.
52+50-56+50	RT	4'-0"	4.5 cy	268 lbs.
56+50-59+70	RT	2'-0"	2.5 cy	148 lbs.

NEW REINFORCED CONCRETE PIPE CULVERTS REQUIRED						
STATION	SIZE	LENG.	CONC. A	CONC. C	REIN. STEEL	D.I. GRATES
45+00	15" x 36"	1.9 cy	1.2 cy	116 lbs.	7	7
48+24	15" x 36"	1.9 cy	1.2 cy	116 lbs.	7	7
52+73	15" x 40"	1.6 cy	1.5 cy	116 lbs.	1	1

NEW DROP INLETS REQUIRED			
STATION	L or R	12" C.G.M.P.	CONC. A. STEEL GRATE
58+70	RT	18'	1.4 cy, 93 lbs.

PROJECT NO. 114-A
 SHEET NO. 7 OF 35



DIT #7 SPARK IN ROOT 16' ELM 23' RT STA. 52+72 ELEV. 236.53

EQUATION
 + 0.4 P.
 STA 59+75
 200' V.C.
 ELEV. 187.77

SERIES E
 SHEET 7 OF 35 SHEETS

4

CABLE GUARD RAIL REQUIRED

STATIONS	LENGTH	CURVATURE	AM. LENGTH
62+10-64+36	LT. 176'	40'	216'
63+20-64+30	RT. 100'	40'	200'

CONCRETE CURB REQUIRED

STATIONS	LEN. R.	LEN. CONCR.	STEEL
63+50-64+90	RT.	140'	1.6 cy. 94 lbs.

NEW DROP INLETS REQUIRED

STATION	LEN. R.	CONCR. A.	STEEL	GRATE	Q.P.	Q.P.	Q.P.
61+17	LT.	1.4 cy.	99 lbs.	1	-	-	-
68+76	RT.	1.4 cy.	99 lbs.	1	6'	-	-
71+00	RT.	1.4 cy.	99 lbs.	1	4'	-	30'
73+36	LT.	1.4 cy.	99 lbs.	1	4'	-	-
64+30	RT.	1.4 cy.	99 lbs.	1	-	50'	-

NEW REIN. CONCRETE BOX CULVERTS REQUIRED

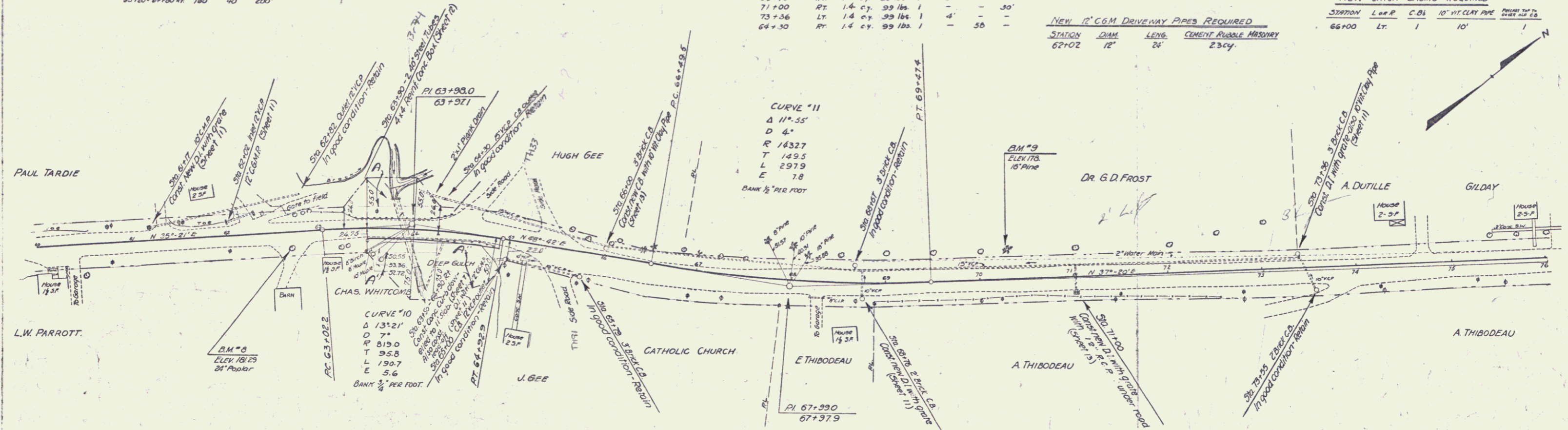
STATION	SIZE	CONCR. A.	REIN. STEEL
63+30	4'x4'	58.7 cu. y.	4018 lbs.

NEW 12" CGM DRIVEWAY PIPES REQUIRED

STATION	DIAM.	LEN.	CEMENT RUBBLE MESH
62+02	12"	24'	23 cy.

NEW CATCH BASINS REQUIRED

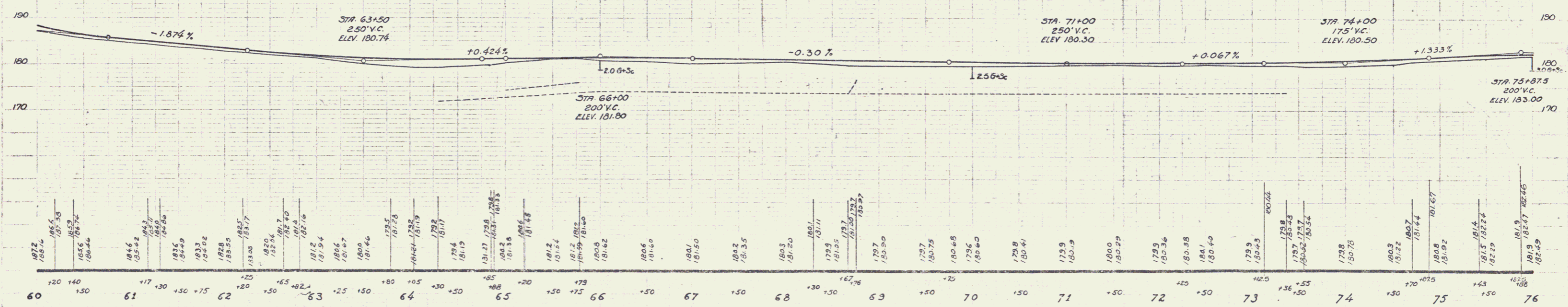
STATION	LEN. R.	C.B.	10" V.C. CLAY PIPE
66+00	LT.	1	10'



LINE REVISION JUNE 13, 1931

ORIG.	REV.
PI 67+990	67+990
Δ 11°22'	11°55'
D 4'	4'

Parcel	Kind of Instrument	Date of Instrument	Grantor	Grantee	Recorded	Remarks
A	G.C.D.	6-2-31	Paul Tardie	Stefft	Book 450-1	6-23-31
A'	"	6-5-31	Chas. Whitcomb	"	AS 451	6-23-31
A''	"	6-2-31	J.A. Gee	"	AS 448	6-23-31



DIT #8 SPIKE IN ROOT 24" POPLAR 17' RT. STA. 62+60 ELEV. 181.29
 DIT #9 SPIKE IN ROOT 16" W. PIN 20' LT. STA. 70+28 ELEV. 178.92

NEW CATCH BASINS REQUIRED

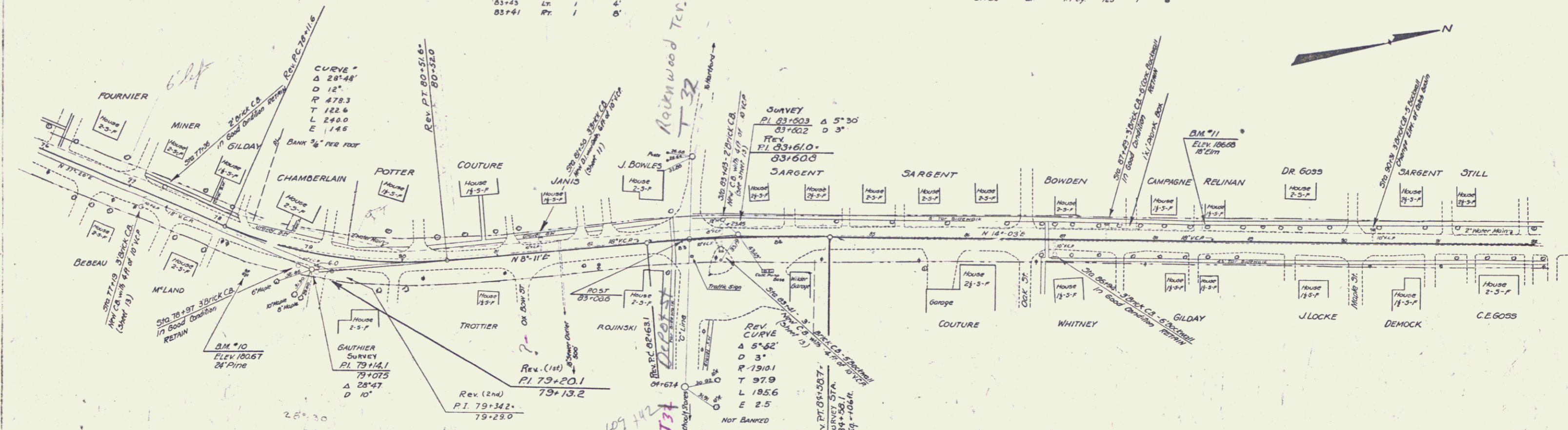
STATION	Loc	R	C. S.	10" VIT. CLAY PIPE	PROPOSED TOP
77+19	RT.	1	4'		
83+43	LT.	1	4'		
83+41	RT.	1	8'		

CHANGING ELEVATIONS OF MANHOLES & CATCH BASINS

STATION	Loc	R	CATCH BASIN
90+31	LT.	1	

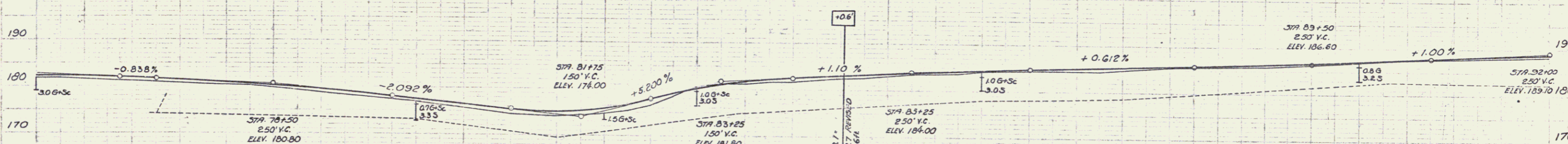
DROPP INLETS REQUIRED

Sta	Loc	R	CORR. A.	SH	GRIP	10" VCP
81+50	LT.	1	17 in.	125'	1	6'



LINE REVISION JUNE 19, 1931

	Orig.	1st Rev.	2nd Rev.
PI	79+14.1	79+20.1	79+34.2
Δ	28°47'	25°02'	28°48'
D	10'	10'	12'



Sta	Elev.	Sta	Elev.	Sta	Elev.	Sta	Elev.	Sta	Elev.	Sta	Elev.	Sta	Elev.	Sta	Elev.	Sta	Elev.	Sta	Elev.
76	181.3	77	181.5	78	181.2	79	180.8	80	180.5	81	180.2	82	180.0	83	180.1	84	180.3	85	180.5
76	182.5	77	182.8	78	182.5	79	182.1	80	181.8	81	181.5	82	181.3	83	181.4	84	181.6	85	181.8
76	183.7	77	184.0	78	183.7	79	183.3	80	183.0	81	182.7	82	182.5	83	182.6	84	182.8	85	183.0
76	184.9	77	185.2	78	184.9	79	184.5	80	184.2	81	183.9	82	183.7	83	183.8	84	184.0	85	184.2
76	186.1	77	186.4	78	186.1	79	185.7	80	185.4	81	185.1	82	184.9	83	185.0	84	185.2	85	185.4
76	187.3	77	187.6	78	187.3	79	186.9	80	186.6	81	186.3	82	186.1	83	186.2	84	186.4	85	186.6
76	188.5	77	188.8	78	188.5	79	188.1	80	187.8	81	187.5	82	187.3	83	187.4	84	187.6	85	187.8
76	189.7	77	190.0	78	189.7	79	189.3	80	189.0	81	188.7	82	188.5	83	188.6	84	188.8	85	189.0
76	190.9	77	191.2	78	190.9	79	190.5	80	190.2	81	189.9	82	189.7	83	189.8	84	190.0	85	190.2
76	192.1	77	192.4	78	192.1	79	191.7	80	191.4	81	191.1	82	190.9	83	191.0	84	191.2	85	191.4
76	193.3	77	193.6	78	193.3	79	192.9	80	192.6	81	192.3	82	192.1	83	192.2	84	192.4	85	192.6
76	194.5	77	194.8	78	194.5	79	194.1	80	193.8	81	193.5	82	193.3	83	193.4	84	193.6	85	193.8
76	195.7	77	196.0	78	195.7	79	195.3	80	195.0	81	194.7	82	194.5	83	194.6	84	194.8	85	195.0
76	196.9	77	197.2	78	196.9	79	196.5	80	196.2	81	195.9	82	195.7	83	195.8	84	196.0	85	196.2
76	198.1	77	198.4	78	198.1	79	197.7	80	197.4	81	197.1	82	196.9	83	197.0	84	197.2	85	197.4
76	199.3	77	199.6	78	199.3	79	198.9	80	198.6	81	198.3	82	198.1	83	198.2	84	198.4	85	198.6
76	200.5	77	200.8	78	200.5	79	200.1	80	199.8	81	199.5	82	199.3	83	199.4	84	199.6	85	199.8
76	201.7	77	202.0	78	201.7	79	201.3	80	201.0	81	200.7	82	200.5	83	200.6	84	200.8	85	201.0
76	202.9	77	203.2	78	202.9	79	202.5	80	202.2	81	201.9	82	201.7	83	201.8	84	202.0	85	202.2
76	204.1	77	204.4	78	204.1	79	203.7	80	203.4	81	203.1	82	202.9	83	203.0	84	203.2	85	203.4
76	205.3	77	205.6	78	205.3	79	204.9	80	204.6	81	204.3	82	204.1	83	204.2	84	204.4	85	204.6
76	206.5	77	206.8	78	206.5	79	206.1	80	205.8	81	205.5	82	205.3	83	205.4	84	205.6	85	205.8
76	207.7	77	208.0	78	207.7	79	207.3	80	207.0	81	206.7	82	206.5	83	206.6	84	206.8	85	207.0
76	208.9	77	209.2	78	208.9	79	208.5	80	208.2	81	207.9	82	207.7	83	207.8	84	208.0	85	208.2
76	210.1	77	210.4	78	210.1	79	209.7	80	209.4	81	209.1	82	208.9	83	209.0	84	209.2	85	209.4
76	211.3	77	211.6	78	211.3	79	210.9	80	210.6	81	210.3	82	210.1	83	210.2	84	210.4	85	210.6
76	212.5	77	212.8	78	212.5	79	212.1	80	211.8	81	211.5	82	211.3	83	211.4	84	211.6	85	211.8
76	213.7	77	214.0	78	213.7	79	213.3	80	213.0	81	212.7	82	212.5	83	212.6	84	212.8	85	213.0
76	214.9	77	215.2	78	214.9	79	214.5	80	214.2	81	213.9	82	213.7	83	213.8	84	214.0	85	214.2
76	216.1	77	216.4	78	216.1	79	215.7	80	215.4	81	215.1	82	214.9	83	215.0	84	215.2	85	215.4
76	217.3	77	217.6	78	217.3	79	216.9	80	216.6	81	216.3	82	216.1	83	216.2	84	216.4	85	216.6
76	218.5	77	218.8	78	218.5	79	218.1	80	217.8	81	217.5	82	217.3	83	217.4	84	217.6	85	217.8
76	219.7	77	220.0	78	219.7	79	219.3	80	219.0	81	218.7	82	218.5	83	218.6	84	218.8	85	219.0
76	220.9	77	221.2	78	220.9	79	220.5	80	220.2	81	219.9	82	219.7	83	219.8	84	220.0	85	220.2
76	222.1	77	222.4	78	222.1	79	221.7	80	221.4	81	221.1	82	220.9	83	221.0	84	221.2	85	221.4
76	223.3	77	223.6	78	223.3	79	222.9	80	222.6	81	222.3	82	222.1	83	222.2	84	222.4	85	222.6
76	224.5	77	224.8	78	224.5	79	224.1	80	223.8	81	223.5	82	223.3	83	223.4	84	223.6	85	223.8
76	225.7	77	226.0	78	225.7	79	225.3	80	225.0	81	224.7	82	224.5	83	224.6	84	224.8	85	225.0
76	226.9	77	227.2	78	226.9	79	226.5	80	226.2	81	225.9	82	225.7	83	225.8	84	226.0	85	226.2
76	228.1	77	228.4	78	228.1	79	227.7	80	227.4	81	227.1	82	226.9	83	227.0	84	227.2	85	227.4
76	229.3	77	229.6	78	229.3	79	228.9	80	228.6	81	228.3	82	228.1	83	228.2	84	228.4	85	228.6
76	230.5	77	230.8	78	230.5	79	230.1	80	229.8	81	229.5	82	229.3	83	229.4	84	229.6	85	229.8
76	231.7	77	232.0	78	231.7	79	231.3	80	231.0	81	230.7	82	230.5	83	230.6	84	230.8	85	231.0
76	232.9	77	233.2	78	232.9	79	232.5	80	232.2	81	231.9	82	231.7	83	231.8	84	232.0	85	232.2
76	234.1	77	234.4	78	234.1	79	233.7	80	233.4	81	233.1	82	232.9	83	233.0	84	233.2	85	233.4
76	235.3	77	235.6	78	235.3	79	234.9	80	234.6	81	234.3	82	234.1	83	234.2	84	234.4	85	234.6
76	236.5	77	236.8	78	236.5	79	236.1	80	235.8	81	235.5	82	235.3	83	235.4	84	235.6	85	235.8
76	237.7	77	238.0	78	237.7	79	237.3	80	237.0	81	236.7	82	236.5	83	236.6	84	236.8	85	237.0
76	238.9	77	239.2	78	238.9	79	238.5	80	238.2	81	237.9	82	237.7	83	237.8	84	238.0	85	238.2
76	240.1	77	240.4	78	240.1	79	239.7	80	239.4	81	239.1	82	238.9	83	239.0	84	239.2	85	239.4
76	241.3	77	241.6	78	241.3	79	240.9	80	240.6	81	240.3	82	240.1	83	240.2	84	240.4	85	240.6
76	242.5	77	242.8	78	242.5	79	242.1	80	241.8	81	241.5	82	241.3	83	241.4	84	241.6	85	241.8
76	243.7	77	244.0	78	243.7	79	243.3	80	243.0	81	242.7	82	242.5	83	242.6	84	242.8	85	243.0
76	244.9	77	245.2	78	244.9	79	244.5	80	244.2	81	243.9	82	243.7	83	243.8	84	244.0	85	244.2
76	246.1	77	246.4	78	246.1	79	245.7	80	245.4	81	245.1	82	244.9	83	245.0	84	245.2	85	245.4
76	247.3	77	247.6	78	247.3	79	246.9	80	246.6	81	246.3	82	246.1	83	246.2	84	246.4	85	246.6
76	248.5	77	248.8	78	248.5	79	248.1	80	247.8	81	247.5	82	247.3	83	247.4	84	247.6	85	247.8
76	249.7	77	250.0	78	249.7	79	249.3	80	249.0	81	248.7	82	248.5	83	248.6	84	248.8	85	249.0
76	250.9	77	251.2	78	250.9	79	250.5	80	250.2	81	249.9	82	249.7	83	249.8	84	250.0	85	250.2
76	252.1	77	252.4	78	252.1	79	251.7	80	251.4	81	251.1	82	250.9	83	251.0	84	251.2	85	251.4
76	253.3	77	253.6	78	253.3	79	252.9	80	252.6	81	252.3	82	252.1	83	252.2	84	252.4	85	252.6
76	254.5	77	254.8	78	254.5	79	254.1	80	253.8	81	253.5	82	253.3	83	253.4	84	253.6	85	25

