

NEW CATCH BASINS REQUIRED

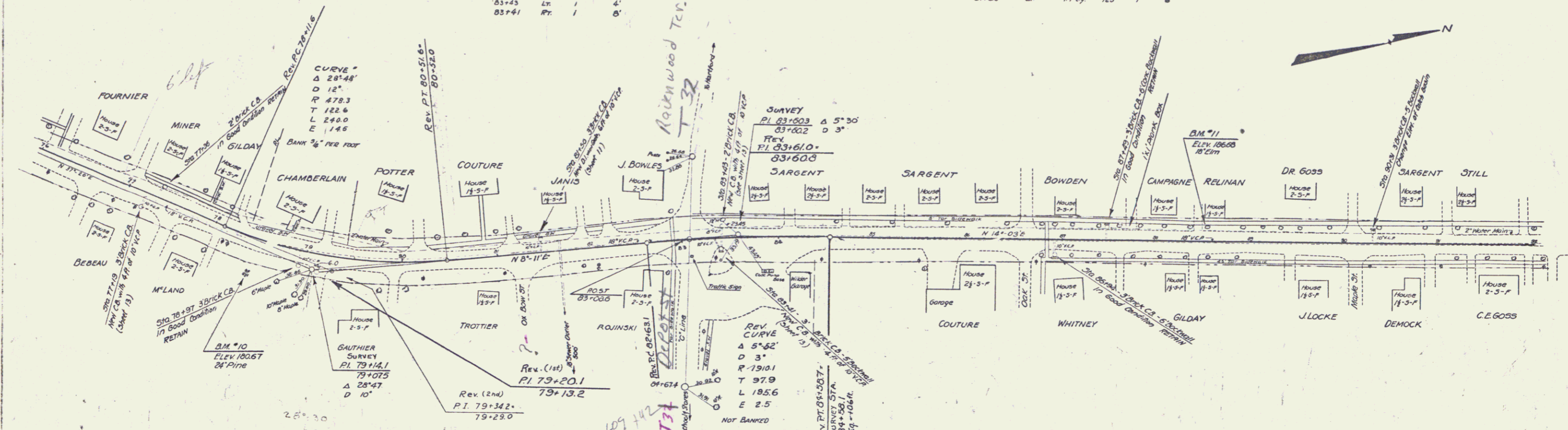
STATION	Loc	R	C. S.	10" VIT. CLAY PIPE	PROPOSED TOP
77+19	RT.	1	4'		
83+43	LT.	1	4'		
83+41	RT.	1	8'		

CHANGING ELEVATIONS OF MANHOLES & CATCH BASINS

STATION	Loc	R	CATCH BASIN
90+31	LT.	1	

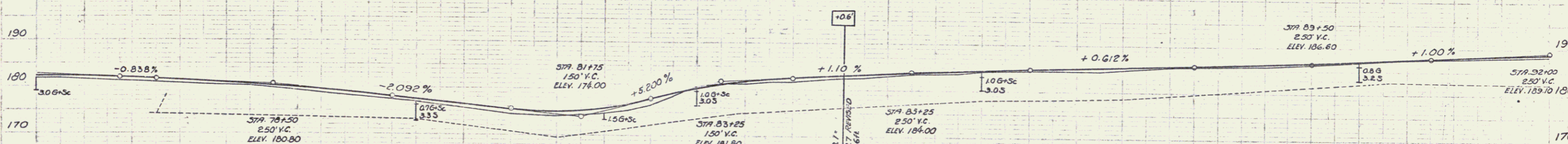
DROPPING INLETS REQUIRED

Sta.	Loc	R	CORR. A.	SH	GRIP	10" VCP
81+50	LT.	1	17 in.	125'	1	6'



LINE REVISION JUNE 19, 1931

	Orig.	1st Rev.	2nd Rev.
P.I.	79+14.1	79+20.1	79+34.2
Δ	28'47"	25'02"	28'48"
D	10'	10'	12'



Station	Elevation
76	181.3
77	182.5
78	183.7
79	184.9
80	186.1
81	187.3
82	188.5
83	189.7
84	190.9
85	192.1
86	193.3
87	194.5
88	195.7
89	196.9
90	198.1
91	199.3
92	200.5

B.M. #10 SPIKE IN ROOT 24' PINE 32' RT 79+50 ELEV 180.67
 B.M. #11 18" ELEV 185.17 88+36 180.08