

CABLE GUARD RAIL REQUIRED

STATIONS	LENGTH	CURVATURE	AM. LENGTH
62+10-64+36	LT. 176'	40'	216'
63+20-64+30	RT. 100'	40'	200'

CONCRETE CURB REQUIRED

STATIONS	LEN. R.	LEN. CONCR.	STEEL
63+50-64+90	RT.	140'	1.6 cy. 94 lbs.

NEW DROP INLETS REQUIRED

STATION	LEN. R.	CONCR.	STEEL	GRATE	Q.P.	Q.P.	Q.P.
61+17	LT.	1.4 cy.	99 lbs.	1	-	-	-
68+76	RT.	1.4 cy.	99 lbs.	1	6'	-	-
71+00	RT.	1.4 cy.	99 lbs.	1	4'	-	30'
73+36	LT.	1.4 cy.	99 lbs.	1	4'	-	-
64+30	RT.	1.4 cy.	99 lbs.	1	-	50'	-

NEW REIN. CONCRETE BOX CULVERTS REQUIRED

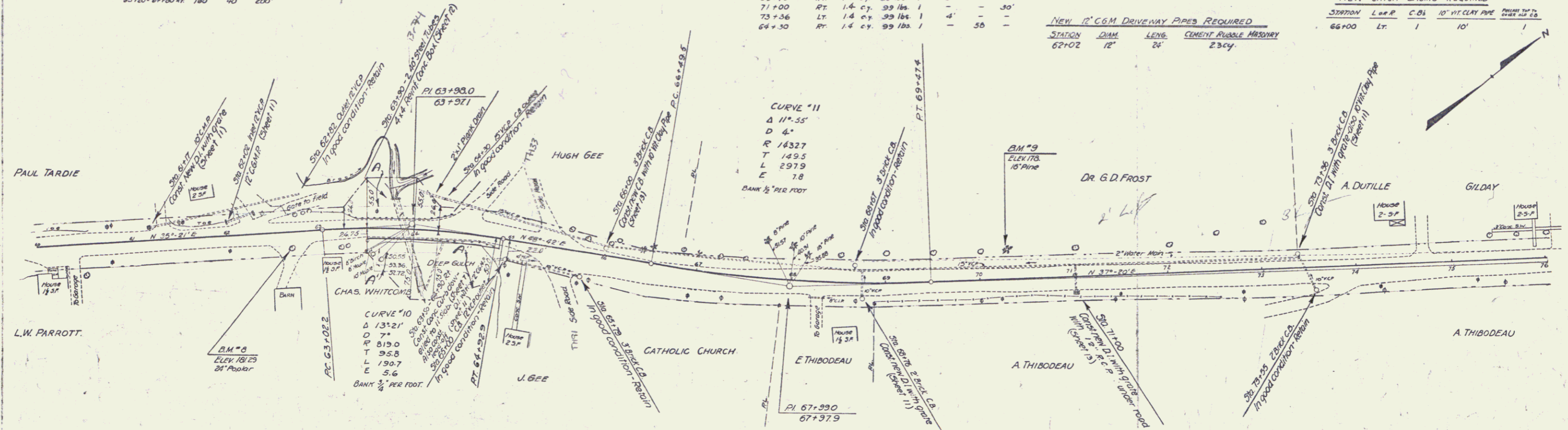
STATION	SIZE	CONCR.	REIN. STEEL
63+30	4'x4'	58.7 cu. y.	4018 lbs.

NEW 12" CGM DRIVEWAY PIPES REQUIRED

STATION	DIAM.	LEN.	CEMENT RUBBLE MESH
62+02	12"	24'	23 cy.

NEW CATCH BASINS REQUIRED

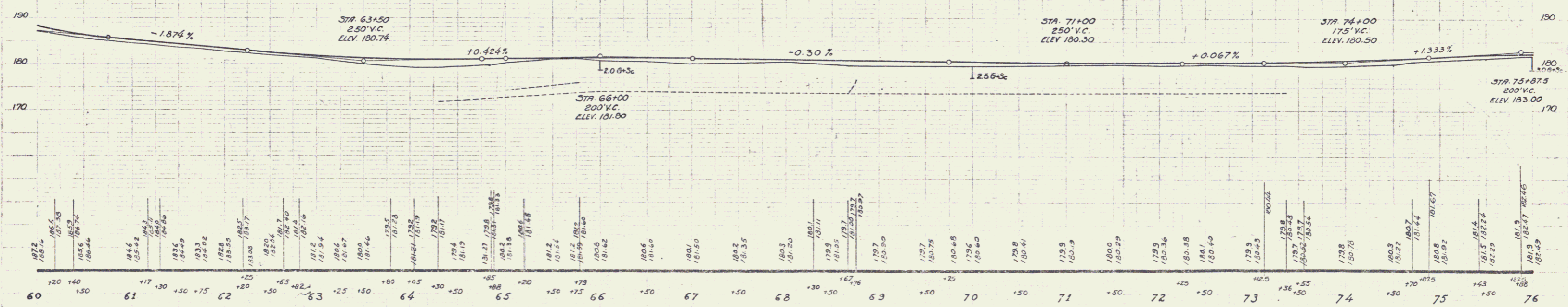
STATION	LEN. R.	C.B.	10" V.C. CLAY PIPE
66+00	LT.	1	10'



LINE REVISION JUNE 13, 1931

ORIG.	REV.
PI 67+990	67+990
Δ 11°22'	11°55'
D 4'	4'

Parcel	Kind of Instrument	Date of Instrument	Grantor	Grantee	Recorded	Remarks
A	G.C.D.	6-2-31	Paul Tardie	Stefft	Book Page Date	A5 480-1 6-23-31
A'	"	6-5-31	Chas. Whitcomb	"	A5 481 6-23-31	
A''	"	6-2-31	J.A. Gee	"	A5 448 6-23-31	



DIT #8 SPIKE IN ROOT 24" POPLAR 17' RT. STA. 62+60 ELEV. 181.29
 DIT #9 SPIKE IN ROOT 16" W. PINE 20' LT. STA. 70+28 ELEV. 178.92