

GLUE POSTS OF WOOD REQUIRED		
CURVEY STATION	LEFT	RIGHT
45+00	-	1
45+24	-	1
52+73	-	1

WOOD GUARD RAIL REQUIRED		
CURVEY STATION	LEFT	RIGHT
45+00	24'	-
48+24	24'	-

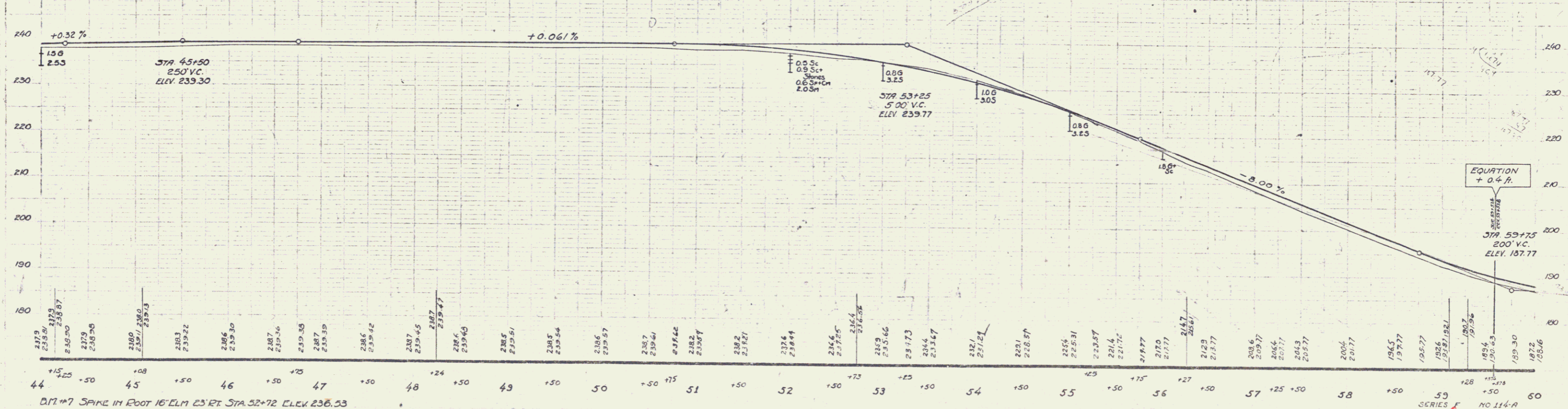
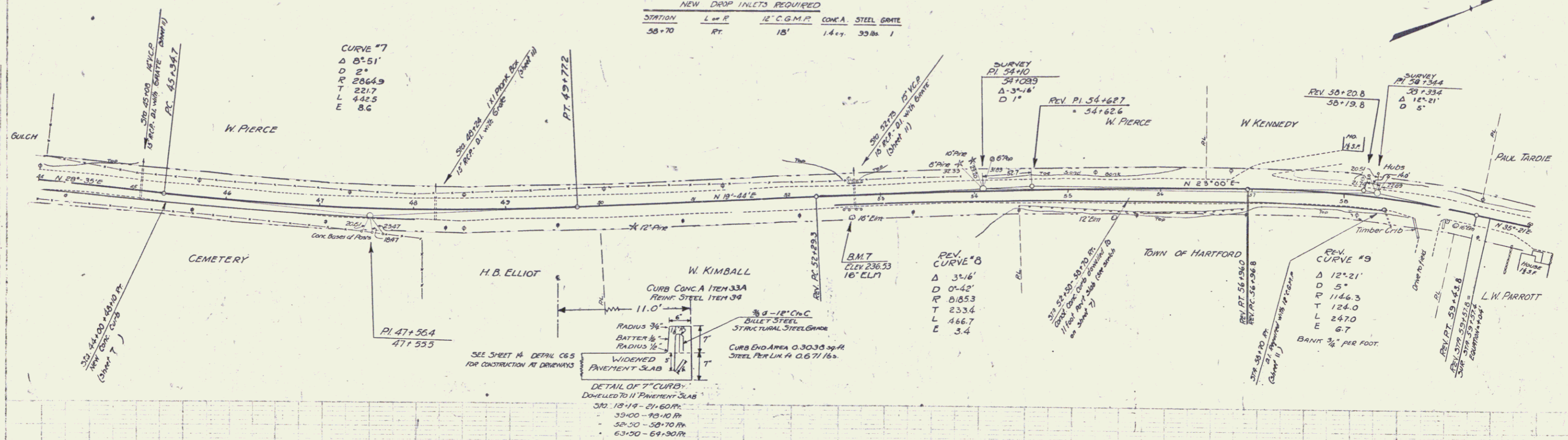
CABLE GUARD RAIL REQUIRED			
STATIONS	LENGTH	CONSTANT	PIV LENGTH
52+50 - 52+90.41	40'	40'	80'

CONCRETE CURB REQUIRED				
STATIONS	L or R	LENS	CONC. A	STEEL
44+00-48+10	RT	4'-10"	4.6 cy	275 lbs.
52+50-56+50	RT	4'-0"	4.5 cy	268 lbs.
56+50-59+70	RT	2'-0"	2.5 cy	148 lbs.

NEW REINFORCED CONCRETE PIPE CULVERTS REQUIRED						
STATION	SIZE	LENS	CONC. A	CONC. C	REIN. STEEL	D.I. GRATES
45+00	15"	36'	1.9 cy	1.2 cy	116 lbs.	7
48+24	15"	36'	1.9 cy	1.2 cy	116 lbs.	1
52+73	15"	40'	1.6 cy	1.5 cy	116 lbs.	1

NEW DROP INLETS REQUIRED			
STATION	L or R	12" C.G.M.P.	CONC. A. STEEL GRATE
58+70	RT	18'	1.4 cy, 33 lbs.

PROJECT NO. 114-A
 SHEET NO. 7 OF 35



DIT #7 SPARK IN ROOT 16' ELM 23' RT STA 52+72 ELEV 236.53

EQUATION
 + 0.4 P.
 STA 59+75
 200' V.C.
 ELEV 187.77