

**CONCRETE CURB REQUIRED**

STATIONS	L or R	LENG.	CONC. A.	STEEL
18+44-19+22	RT	100'	1.2 cy.	72 lbs.
19+80-20+30	RT	30'	1.0 cy.	60 lbs.
20+50-21+16	RT	34'	0.4 cy.	25 lbs.
21+40-21+60	RT	12'	0.1 cy.	6 lbs.

**DROP INLETS REQUIRED**

STA.	L or R	CONC. A.	SI. M.	OVCR.	GRATE
20+81	LT.	1.6 cy.	99"	4'	1
22+74	LT.	1.6 cy.	99"	4'	1
24+64	RT.	1.6 cy.	99"	4'	1

**GRAOUTED COBBLE GUTTER REQUIRED**

STATIONS	L or R	LENG.	WIDTH	AREA
13+00-13+80	RT.	80'	4'-0"	36 sq. yds.

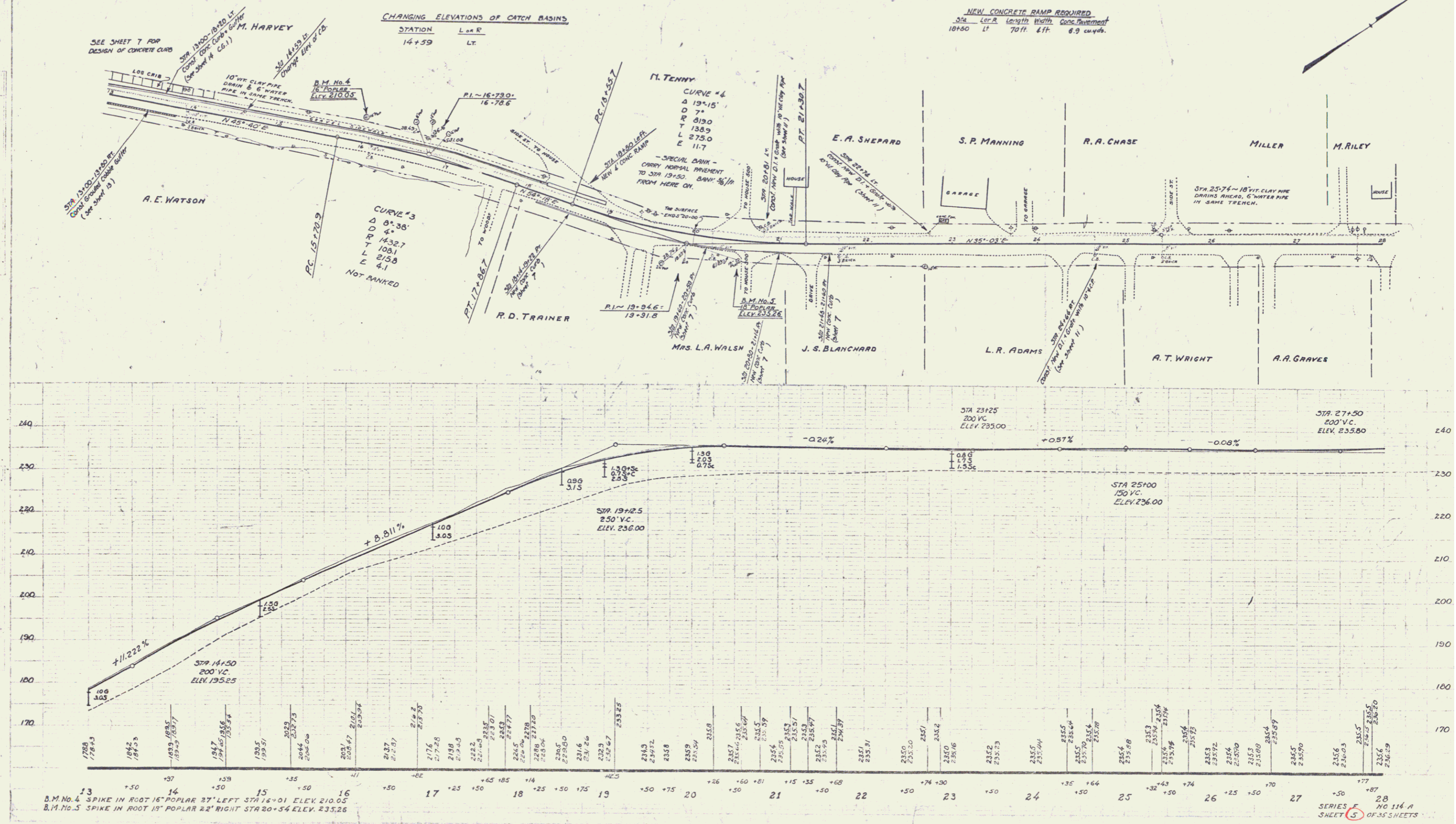
**CONCRETE CURB + GUTTER REQUIRED**

STATIONS	L or R	LENG.	CONC. A.	STEEL
13+00-18+20	LT.	520'	34.0 cy.	336 lbs.

**NEW CONCRETE RAMP REQUIRED**  
 STA. 18+10 LT. 10' 10" x 10' 10" CONC. 1.0 cy. 60 lbs.  
 18+50 LT. 70' 10" x 10" 6.9 cu. yds.

**CHANGING ELEVATIONS OF CATCH BASINS**

STATION	L or R
14+59	LT.



13 B.M. No. 4 SPIKE IN ROOT 16" POPLAR 27' LEFT STA 16+01 ELEV. 210.05  
 B.M. No. 5 SPIKE IN ROOT 18" POPLAR 22' RIGHT STA 20+54 ELEV. 235.26

SERIES 5 NO. 114 A  
 SHEET 5 OF 35 SHEETS