

WOOD GUARD RAIL REQUIRED
 STA 291+00 TO 291+50
 24' H. 24' W.

SABLE GUARD RAIL REQUIRED
 STA 291+50 TO 292+00
 24' H. 24' W.

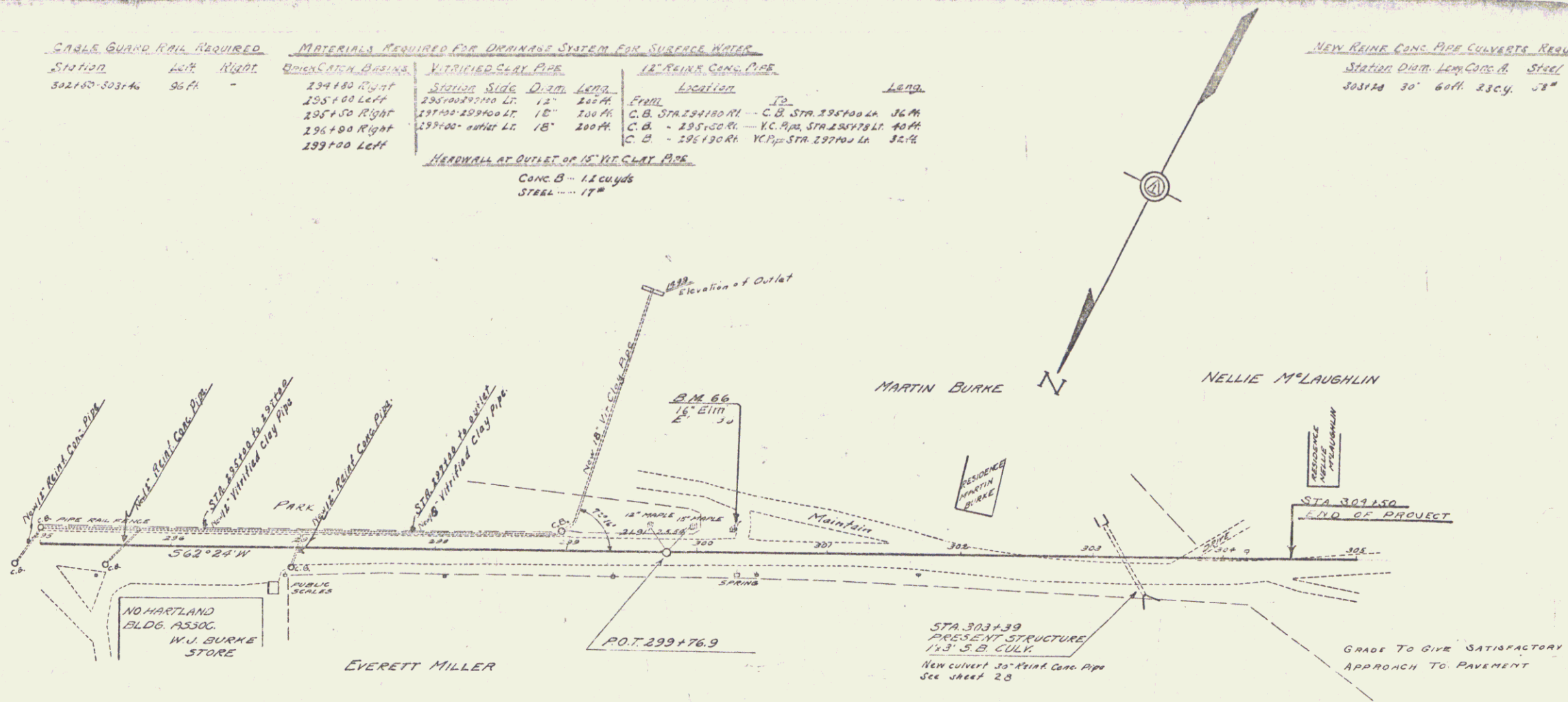
MATERIALS REQUIRED FOR DRAINAGE SYSTEM FOR SURFACE WATER

CONCRETE DRAINAGE	VITRIFIED CLAY PIPE	12" RAINFALL CONC. PIPE	LEAD
294+00 RIGHT	294+00 TO 294+50 LT. 12" 200 FT.	294+00 TO 294+50 LT. 12" 200 FT.	
295+00 LEFT	294+50 TO 295+00 LT. 12" 200 FT.	294+50 TO 295+00 LT. 12" 200 FT.	
295+00 RIGHT	295+00 TO 295+50 LT. 12" 200 FT.	295+00 TO 295+50 LT. 12" 200 FT.	
296+00 LEFT	295+50 TO 296+00 LT. 12" 200 FT.	295+50 TO 296+00 LT. 12" 200 FT.	
296+00 RIGHT	296+00 TO 296+50 LT. 12" 200 FT.	296+00 TO 296+50 LT. 12" 200 FT.	
297+00 LEFT	296+50 TO 297+00 LT. 12" 200 FT.	296+50 TO 297+00 LT. 12" 200 FT.	

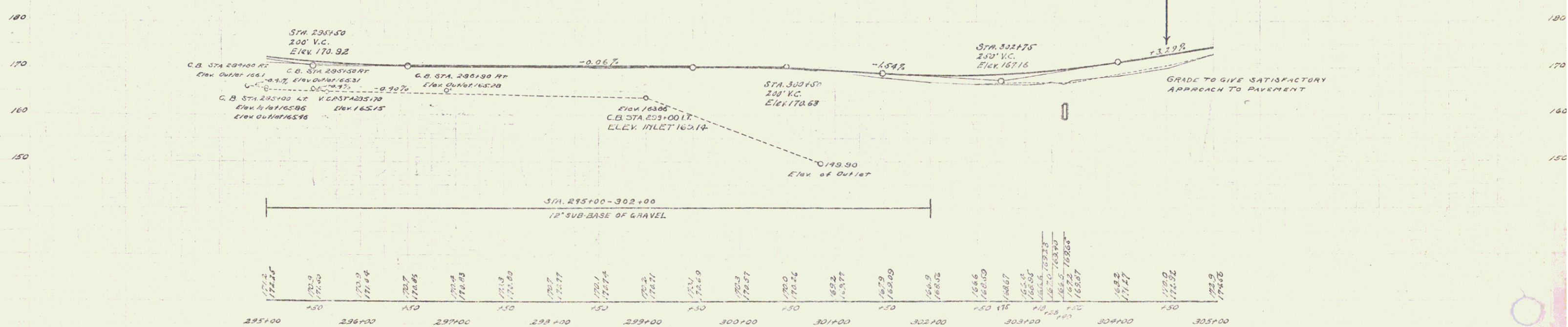
HEADWALL AT OUTLET OF 12" V.C. CLAY PIPE
 CONC. B - 12 CYCLES
 STEEL - 17"

NEW RAINFALL CONC. PIPE CULVERTS REQUIRED
 Station Data: Length Conc. B Steel
 303+24 30' 60" 23cy. 31"

11/18 1929 25 73



BORROW STA. 293+00 TO END
 40:51 CU Yds.
 THIS BORROW TO BE OBTAINED
 FROM RIGHT STA. 297+00 - 298+00



Station	Elevation
295+00	171.25
295+10	171.00
295+20	170.75
295+30	170.50
295+40	170.25
295+50	170.00
295+60	169.75
295+70	169.50
295+80	169.25
295+90	169.00
296+00	168.75
296+10	168.50
296+20	168.25
296+30	168.00
296+40	167.75
296+50	167.50
296+60	167.25
296+70	167.00
296+80	166.75
296+90	166.50
297+00	166.25
297+10	166.00
297+20	165.75
297+30	165.50
297+40	165.25
297+50	165.00
297+60	164.75
297+70	164.50
297+80	164.25
297+90	164.00
298+00	163.75
298+10	163.50
298+20	163.25
298+30	163.00
298+40	162.75
298+50	162.50
298+60	162.25
298+70	162.00
298+80	161.75
298+90	161.50
299+00	161.25
299+10	161.00
299+20	160.75
299+30	160.50
299+40	160.25
299+50	160.00
299+60	159.75
299+70	159.50
299+80	159.25
299+90	159.00
300+00	158.75
300+10	158.50
300+20	158.25
300+30	158.00
300+40	157.75
300+50	157.50
300+60	157.25
300+70	157.00
300+80	156.75
300+90	156.50
301+00	156.25
301+10	156.00
301+20	155.75
301+30	155.50
301+40	155.25
301+50	155.00
301+60	154.75
301+70	154.50
301+80	154.25
301+90	154.00
302+00	153.75
302+10	153.50
302+20	153.25
302+30	153.00
302+40	152.75
302+50	152.50
302+60	152.25
302+70	152.00
302+80	151.75
302+90	151.50
303+00	151.25
303+10	151.00
303+20	150.75
303+30	150.50
303+40	150.25
303+50	150.00
303+60	149.75
303+70	149.50
303+80	149.25
303+90	149.00
304+00	148.75
304+10	148.50
304+20	148.25
304+30	148.00
304+40	147.75
304+50	147.50
304+60	147.25
304+70	147.00
304+80	146.75
304+90	146.50
305+00	146.25

SERIES F 1975
 SHEET 25 OF 73

23