

WOOD GUARD RAIL REQUIRED

Station	Left	Right
107+41-107+45	24#	24#
107+41-107+65	-	24#
117+53-117+77	24#	24#

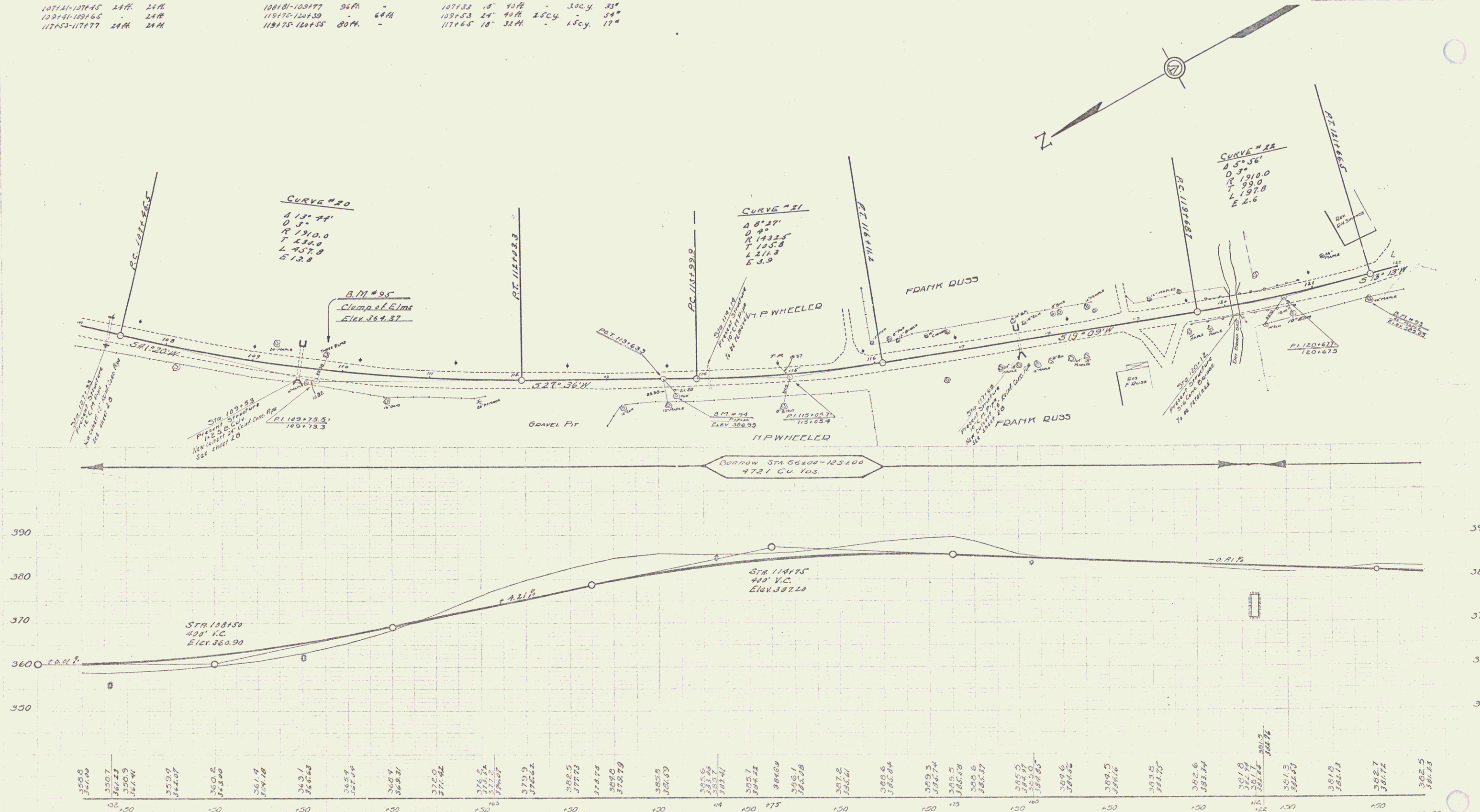
STEEL GUARD RAIL REQUIRED

Station	Left	Right
100+01-100+77	36#	-
119+70-120+30	-	64#
119+75-120+55	80#	-

NEW REINFORCED CONCRETE CULVERTS REQUIRED

Station	Open	End	Conc'd	Conc'd	Steel
107+53	18'	40#	-	30cy	34#
109+53	24'	40#	15cy	-	34#
117+65	18'	32#	-	15cy	17#

77E 1929.12 73



B.M. #93 40' MARLE RIGHT STA 121+58 ~ ELEV 385.05
 B.M. #94 POPULAR RIGHT STA 113+77 ~ ELEV 386.95
 B.M. #95 Spike in clump of Elms, 15# LT of STA 109+79, Elev 364.37

SERIES F 1707E
 SHEET 12 OF 73