

WOOD GUARD RAIL REQUIRED

Station	Left	Right
7114-71162	48 FT	-
7116-71150	-	24 FT
75138-76122	24 FT	24 FT

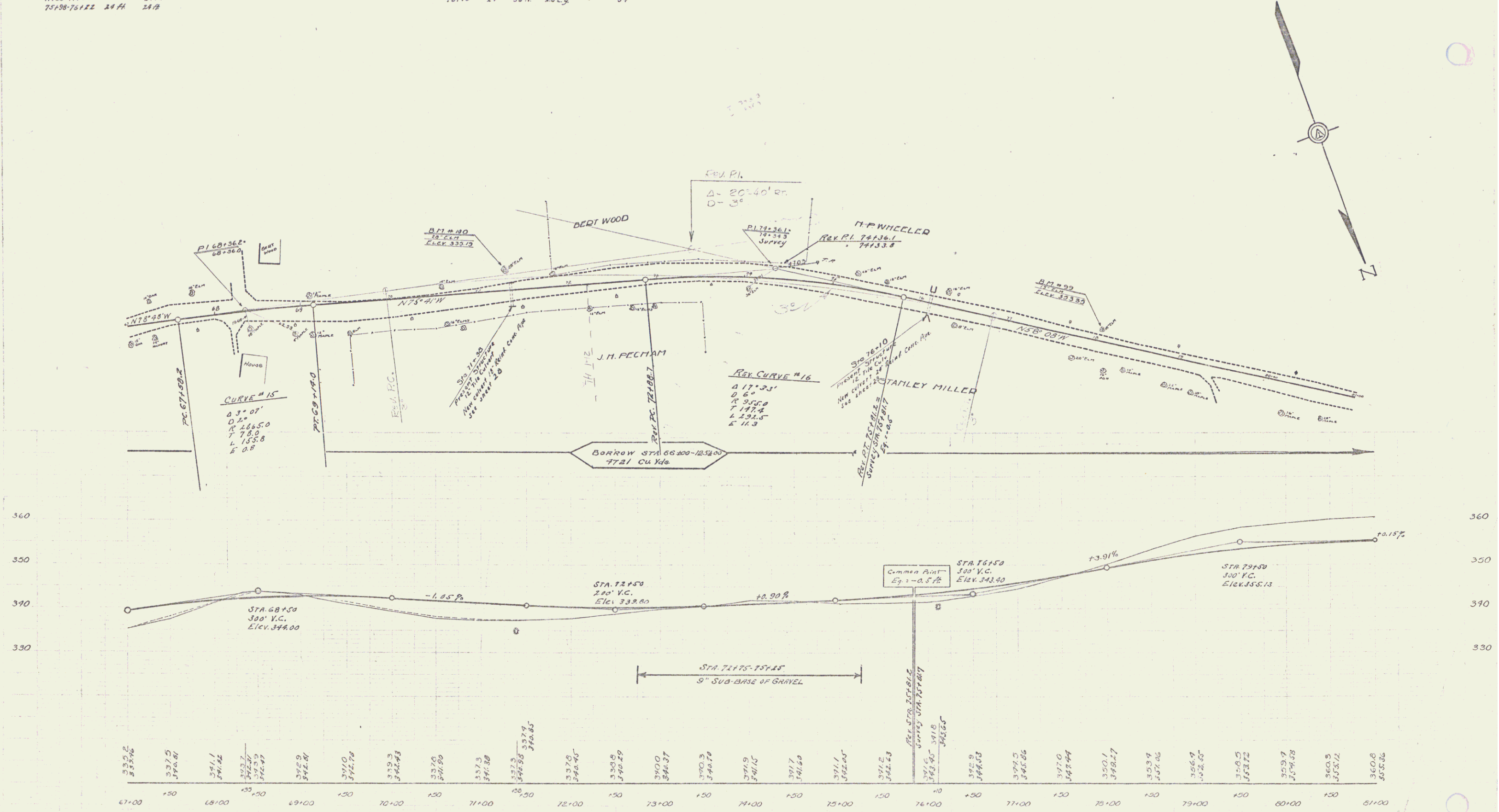
NEW BRINE CONC. P.C.A. CURVES REQUIRED

Station	Dial	Lev.	Conc.	Code	Steel
71138	18"	40 FT	-	30cy	32"
76110	24"	36 FT	15cy	-	34"

777 1929 9 73

DISE. BY STEPHEN M. ANDERSON '08

PLANS AND SECTIONS



BM # 99 15' ELM LEFT STA 78+05 ~ ELEV. 353.33
 BM # 100 25' ELM LEFT STA 71+32 ~ ELEV. 355.19

SERIES F 11071E
 SHEET 9 OF 73