

WOOD GUANO RAIL REQUIRED

Stations	Left	Right
39104-40100	24 ft	
39102-40106		24 ft
43178-44102	24 ft	24 ft
45155-45179	24 ft	
45175-45199		24 ft
47190-48114		24 ft
49183-50107		24 ft

CABLE GUANO RAIL REQUIRED

Stations	Left	Right
47165-51100	375 ft	

NEW RAINING PIPE SOLUTIONS REQUIRED

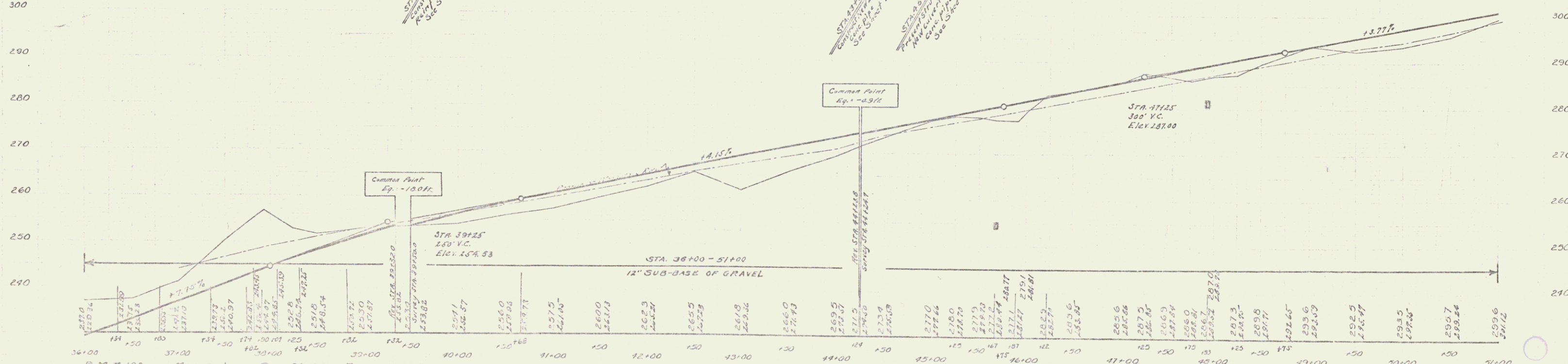
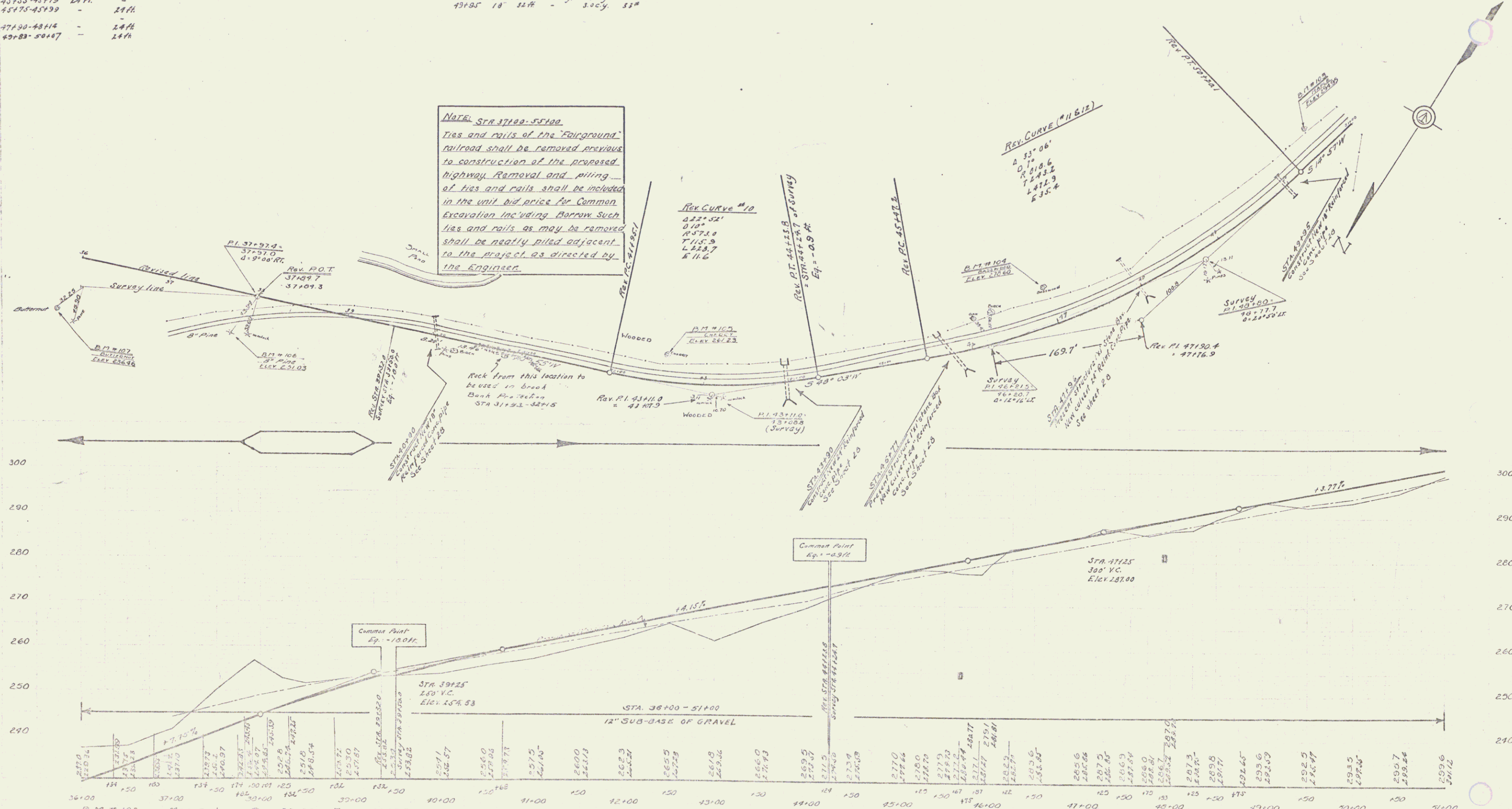
Station	Dist. Key	Conc. A	Conc. B	Sp. C
40100	18'	4 ft	30 cy	5 ft
45100	24'	4 ft	1.5 cy	5 ft
45177	24'	4 ft	1.5 cy	5 ft
47196	24'	4 ft	1.5 cy	4.5 ft
49195	18'	3 ft	30 cy	5 ft

775 1929 7 73

DRS
STEVENS H. ANDERSON

DRS
M.L.S.
M.L.S.

NOTE: STA 37100-51100
Ties and rails of the "Fairground" railroad shall be removed previous to construction of the proposed highway. Removal and piling of ties and rails shall be included in the unit bid price for Common Excavation including Barron. Such ties and rails as may be removed shall be neatly piled adjacent to the project as directed by the Engineer.



BM # 103	MAPLE LEFT STA 30+56 ~ ELEV 294.95
BM # 104	BADWOOD LEFT STA 46+98 ~ ELEV 278.60
BM # 103	CHERRY LEFT STA 42+36 ~ ELEV 261.23
BM # 106	HEMLOCK RIGHT STA 31+13 ~ ELEV 251.03
BM # 107	BUTTERNUT RIGHT STA 35+78 ~ ELEV 236.46

SERIES F 17071E
SHEET 7 OF 73

5