

INDEX OF SHEETS

STATE OF VERMONT
DEPARTMENT OF HIGHWAYS

PROPOSED IMPROVEMENT

TOWN OF WATERFORD

COUNTY OF CALEDONIA

U.S. ROUTE 5

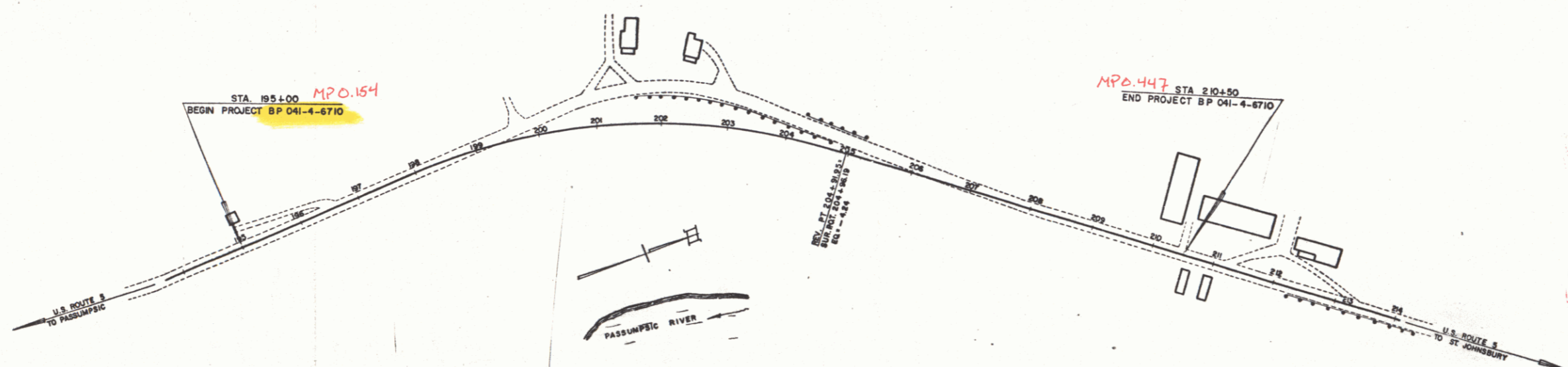
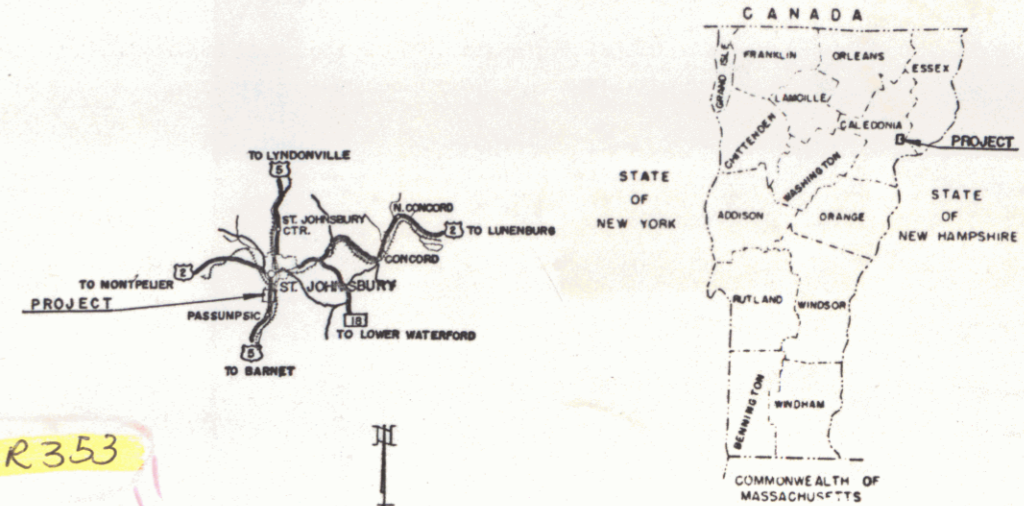
PASSUMPSIC-ST. JOHNSBURY ROAD

Pin # 99R353

BEGINNING AT A POINT 0.1537 MILE NORTHERLY OF THE BARNET-WATERFORD TOWN LINE AND EXTENDING NORTHEASTERLY 0.2928 MILE.

LENGTH OF PROJECT 1,545.76 FEET=0.2928 MILE

ADT 1967 2700
ADT 1987 1600
DHV 1987 245
D 62
T 6.1%
V 50 MPH



Not Constructed
RIGHT-OF-WAY DIVISION
TOWN FILE
PERPETUAL
Pls Town of US5
(To Be Returned To R.O.W. Division)

- CONVENTIONAL SIGNS
- POINT OF ACCESS
 - LIMITS OF ACCESS
 - COUNTY LINE
 - TOWN LINE
 - FENCE LINE
 - STONE WALL
 - UNFENCED PROPERTY
 - GUARD RAIL
 - TRAVELED WAY
 - RAILROAD
 - RETAINING WALL
 - CENTER LINE
 - SURVEY LINE
 - CULVERT
 - DROP INLET
 - TROLLEY POLE
 - POWER POLE
 - TELEPHONE POLE
 - TREES
 - HEDGE
 - PA. CONSTRUCTION IDENTIFICATION SIGNS

- SLOPE RIGHTS
- GROUND ELEVATION
- GRADE ELEVATION
- CURVE DATA
- DEFLECTION OF ANGLE
 - DEGREE OF CURVE
 - RADIUS OF CURVE
 - TANGENT DISTANCE
 - LENGTH OF CURVE
 - EXTERNAL DISTANCE
 - POINT OF INTERSECTION
 - POINT OF CURVE
 - POINT OF TANGENT
 - POINT ON TANGENT
 - POINT ON SUB-TANGENT
 - R.O.W. LIMITS

FOR RIGHT OF WAY DETAILS, SEE RIGHT OF WAY PLANS FOR THIS PROJECT.

THESE PLANS ARE SUBJECT TO SUCH REVISIONS AS MAY BE REQUIRED BY THE BUREAU OF PUBLIC ROADS OR THE COMMISSIONER OF HIGHWAYS.

CONSTRUCTION IS TO BE CARRIED ON IN ACCORDANCE WITH THESE PLANS AND THE STANDARD SPECIFICATIONS FOR HIGHWAY AND BRIDGE CONSTRUCTION DATED APRIL 1964, AS APPROVED BY THE BUREAU OF PUBLIC ROADS ON OCTOBER 12, 1964, INCLUDING ALL SUBSEQUENT APPROVED REVISIONS AND SUCH REVISED SPECIFICATIONS AND SPECIAL PROVISIONS AS ARE INCORPORATED IN THESE PLANS.

DEPARTMENT OF COMMERCE
BUREAU OF PUBLIC ROADS

APPROVED

DIVISION ENGINEER DATE

PROJECT BP NO. 041-4-6710

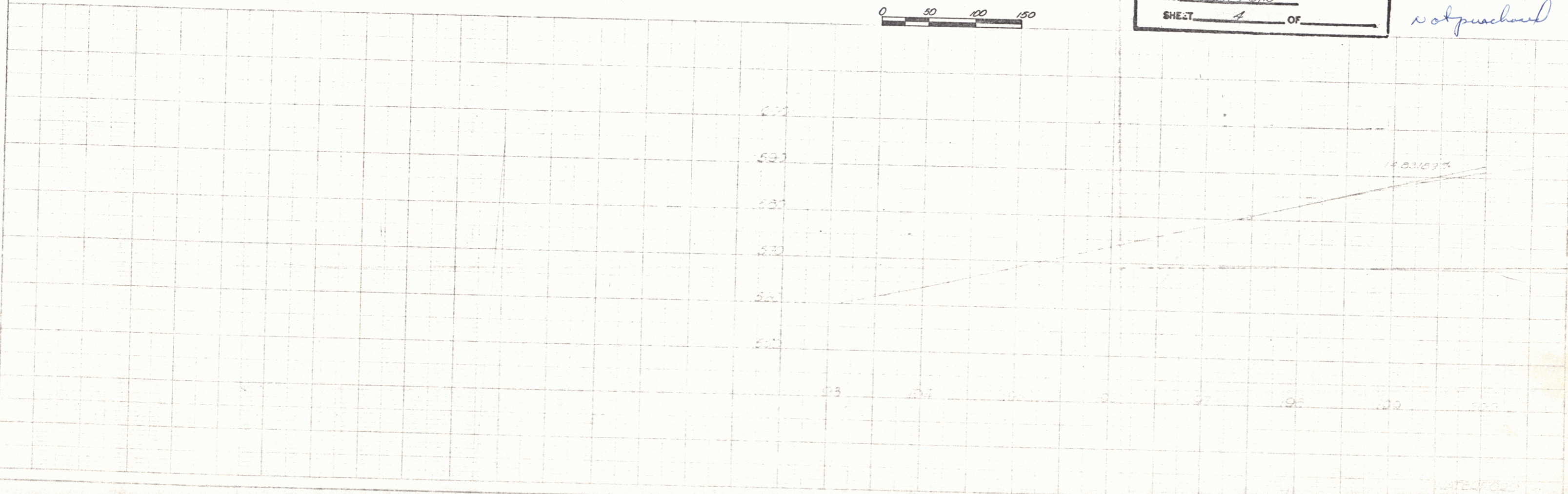
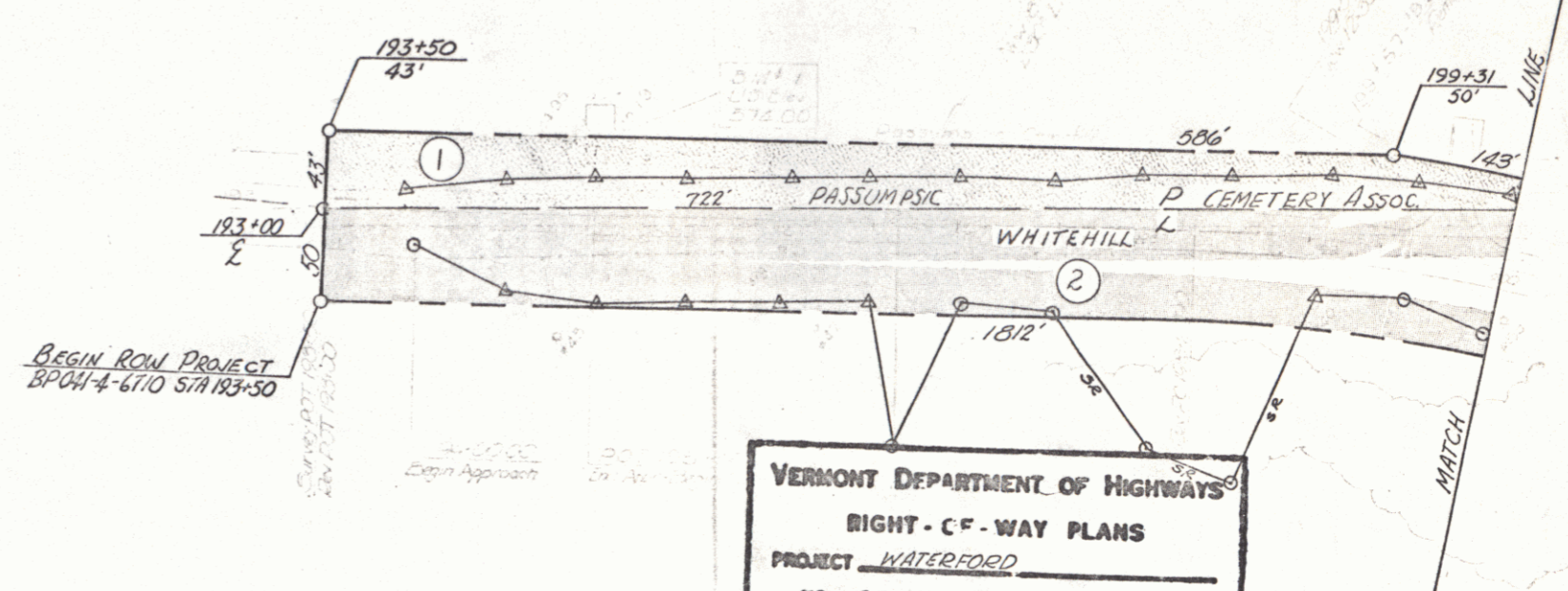
SHEET 1 OF SHEETS

APPROVED <i>[Signature]</i> R.O.W. DIRECTOR DATE 2-2-67	APPROVED _____ DISTRICT ENGINEER DATE _____	APPROVED <i>[Signature]</i> CONSTRUCTION ENGINEER DATE 2/2/67	APPROVED <i>[Signature]</i> BRIDGE ENGINEER DATE 2/13/67	APPROVED <i>[Signature]</i> MECHANICAL ENGINEER DATE 3/2/67	APPROVED _____ ASST. CHIEF ENGINEER DATE _____	APPROVED _____ CHIEF ENGINEER DATE _____
---	---	---	--	---	--	--

POOR ORIGINAL COPY

PLAN
SCALE 1" = 40'
DATE 1/19/68

PROFILE



K&E ENGINEERS & ARCHITECTS
100 N. MAIN ST.
WATERFORD, VT.

DATE 1/19/68
BY [Signature]

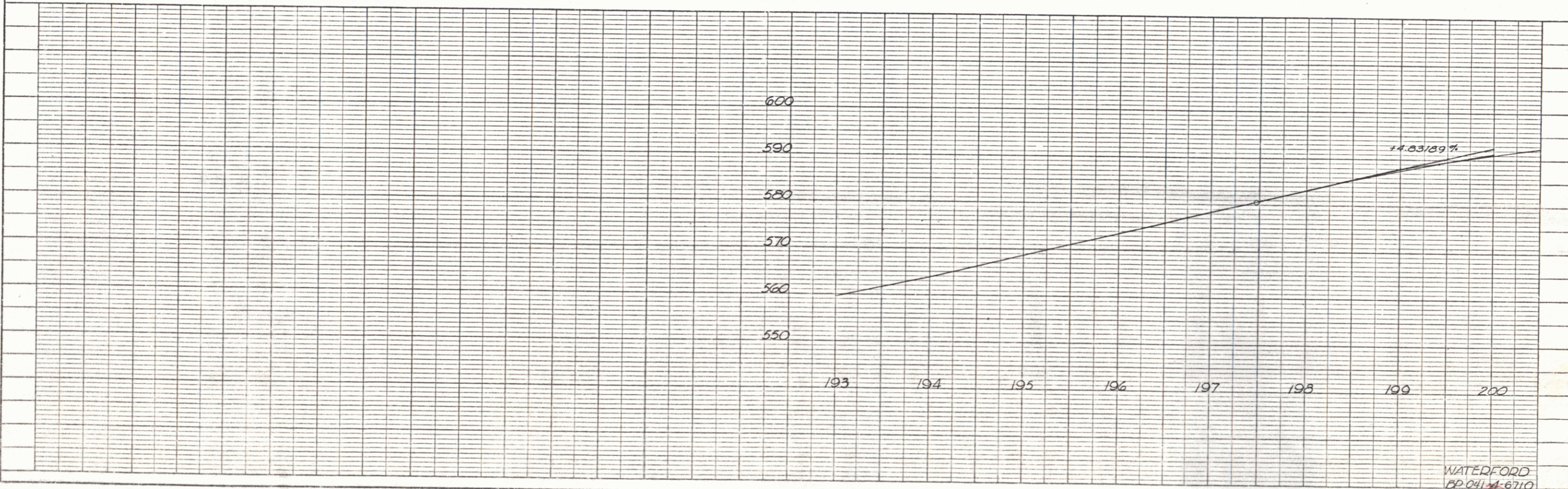
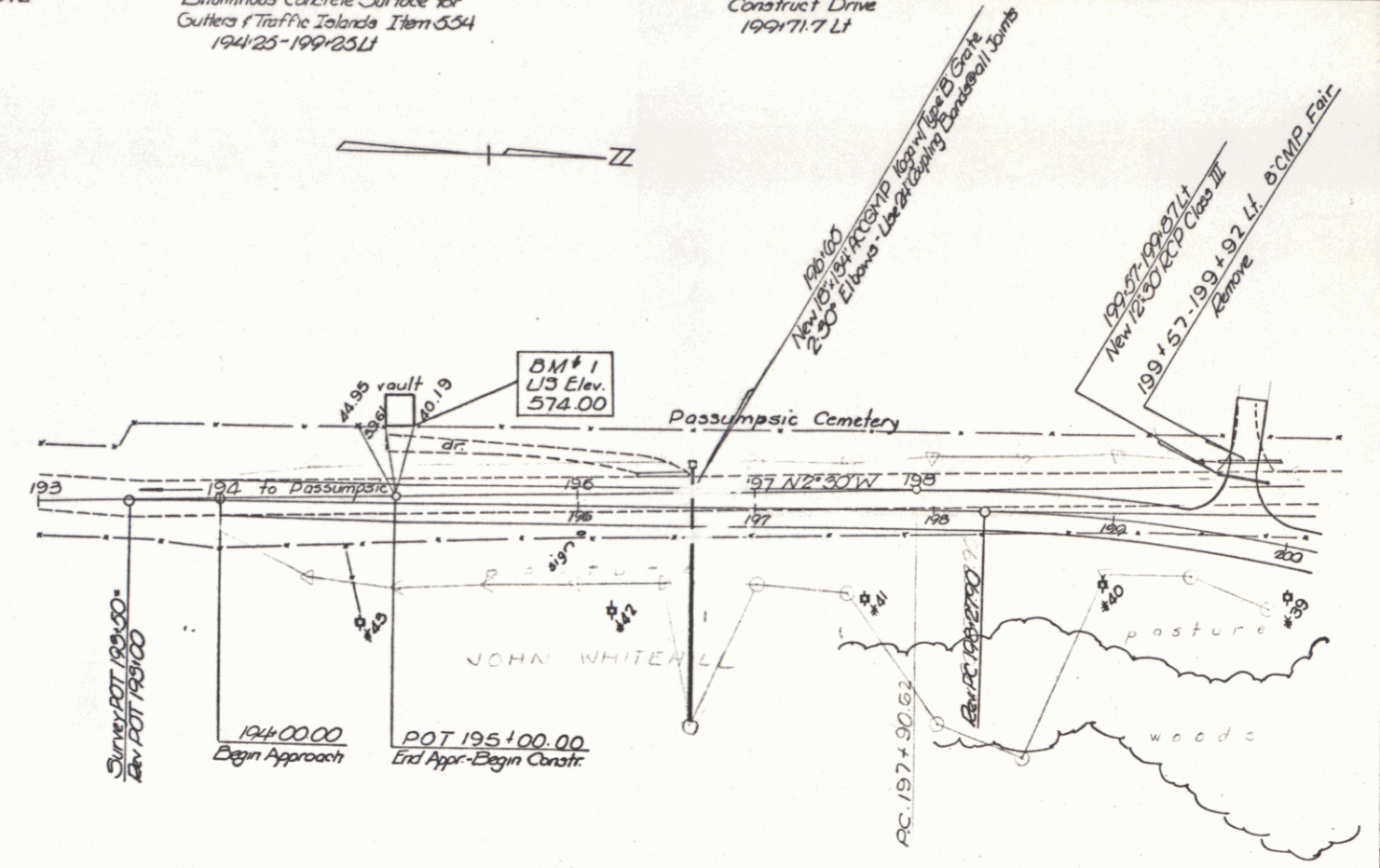
PLAN
 DRAWN BY: S. W. / 11/88
 CHECKED BY: P. W. / 11/88
 DATE: 11/88
 PROJECT: 1988-1989
 SHEET: 11/88

PROFILE
 DRAWN BY: S. W. / 11/88
 CHECKED BY: P. W. / 11/88
 DATE: 11/88
 PROJECT: 1988-1989
 SHEET: 11/88

Three Cable Guard Rail w/Steel Posts Item 542
 190+52.8-200+00.00

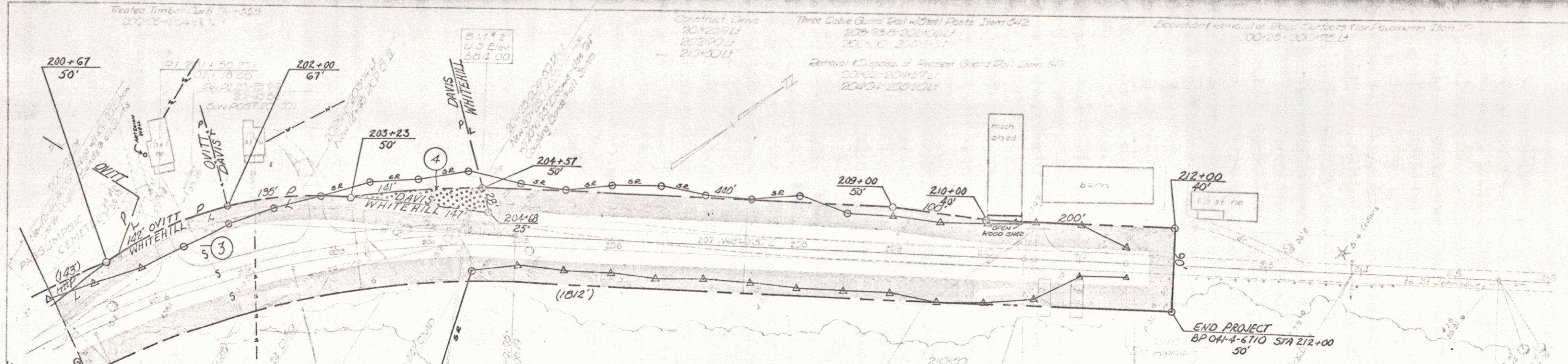
Bituminous Concrete Surface for
 Cutlers Traffic Islands Item 554
 194+25-199+25.11

Construct Drive
 199+71.7 Lt



WATERFORD
 1988-1989
 Sheet 11/88

POOR ORIGINAL COPY



VERMONT DEPARTMENT OF HIGHWAYS
 RIGHT-OF-WAY PLANS
 PROJECT WATERFORD
 NO. BP 041-4-6710
 SHEET 5 OF 12



Not purchased

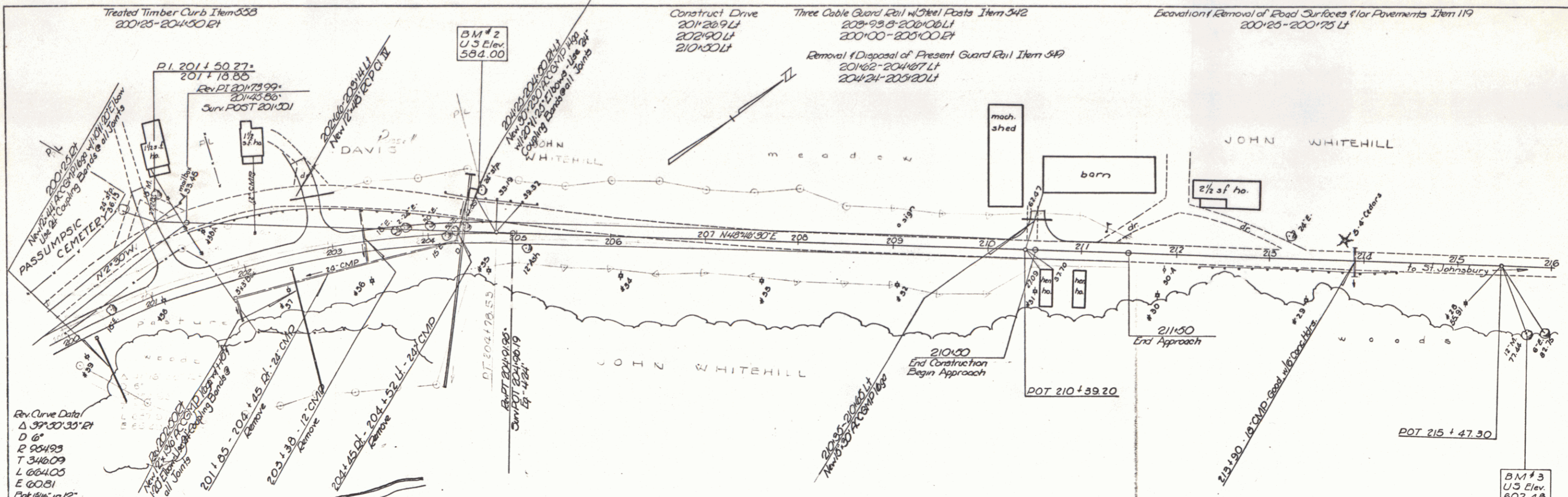
PLAN
 Scale: 1" = 40'
 Date: 10/1/54

PROFILE
 Scale: 1" = 40'
 Date: 10/1/54

Rev. 10/1/54
 1. 37' 30" 30' 0"
 2. 98' 45"
 3. 340' 09"
 4. 88' 45"
 5. 00' 01"
 Enticings in 12"

10/1/54
 12

PLAN
 DRAWN BY: Smith
 CHECKED BY: [blank]
 DATE: 11/86
 SCALE: 1"=40'
 SHEET NO.: 5A of 5



PROFILE
 DRAWN BY: Smith
 CHECKED BY: [blank]
 DATE: 11/86
 SCALE: 1"=40'
 SHEET NO.: 5A of 5

