

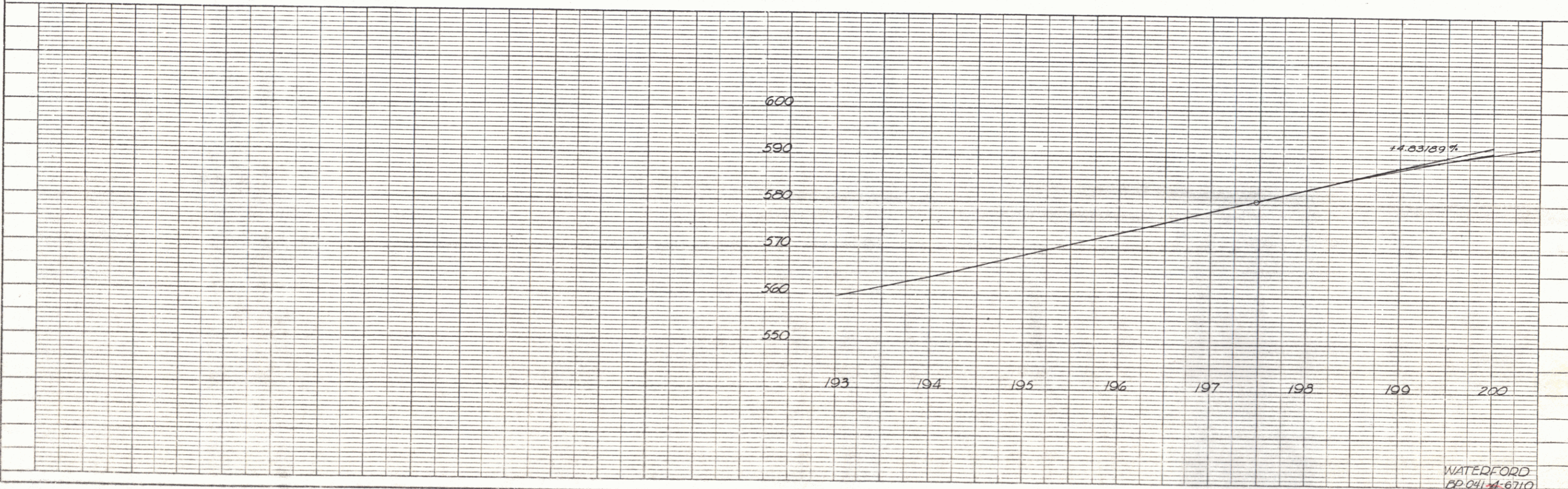
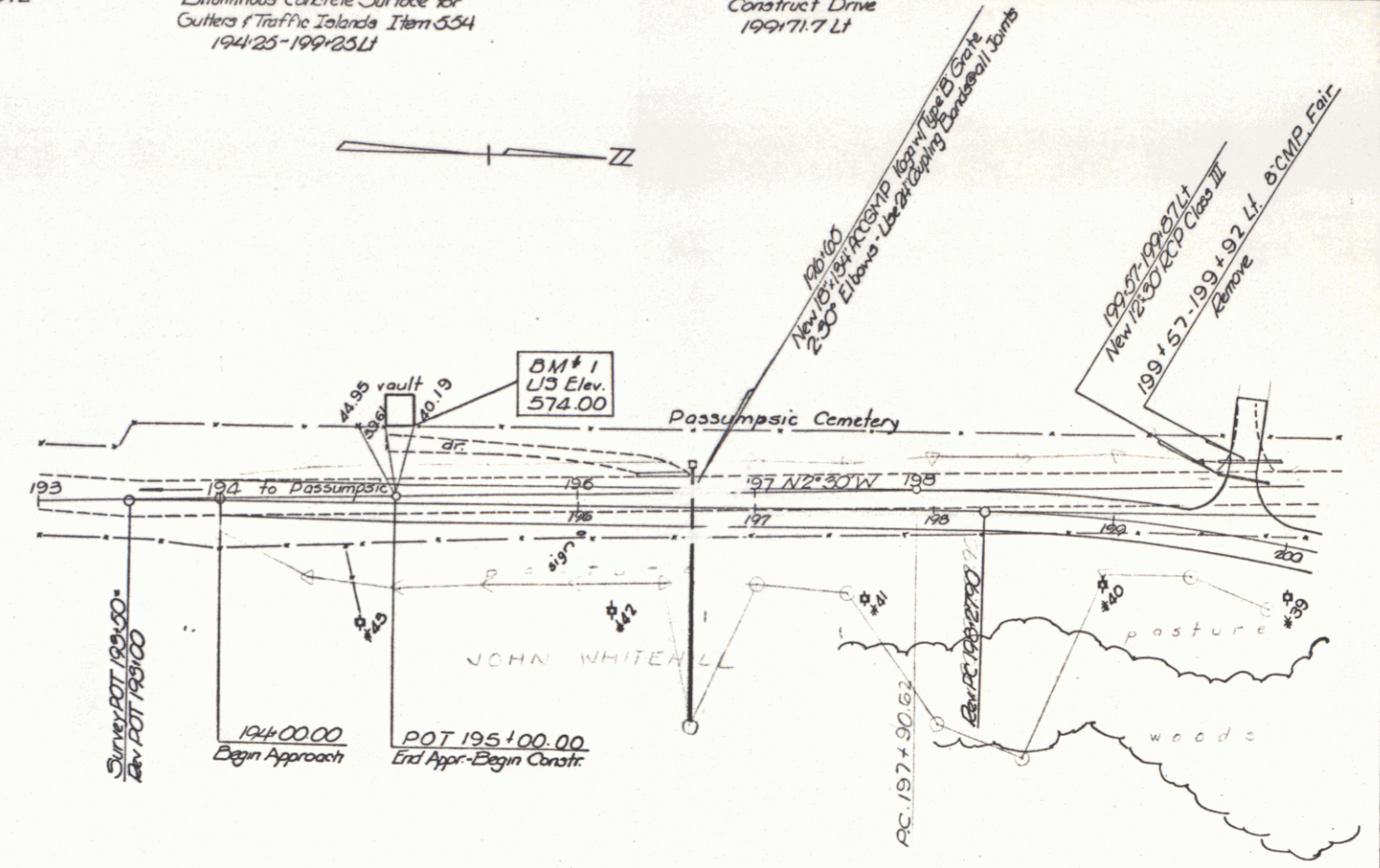
PLAN
 DRAWN BY: S. W. / 11/88
 CHECKED BY: P. W. / 11/88
 DATE: 11/88

PROFILE
 DRAWN BY: S. W. / 11/88
 CHECKED BY: P. W. / 11/88
 DATE: 11/88

Three Cable Guard Rail w/Steel Posts Item 542
 190+52.8-200+00.00

Bituminous Concrete Surface for
 Cutlers Traffic Islands Item 554
 194+25-199+25.11

Construct Drive
 199+71.7 Lt



WATERFORD
 199+04.11-671.0
 Sheet 4A of