

INDEX OF SHEETS

SHEET NO.	TITLE PAGE
1	TYPICAL CROSS SECTION OF IMPROVEMENT DOUBLE TACK COAT OF REFINED TAR WITH PEASTONE SEAL, ITEM 312-A
2	BANKING AND WIDENING TABLES
3	QUANTITY SHEET (ITEMS)
4	QUANTITY SHEET (DRAINAGE)
5	EARTHWORK SHEETS
6-7	PLAN AND PROFILE SHEETS
8-11	PRELIMINARY INFORMATION SHEET (BRIDGE)
12	DETAILS OF ABUTMENT NO. 1
13	DETAILS OF ABUTMENT NO. 2
14	REINFORCING STEEL DETAILS
15	CONSTRUCTION DETAILS 00 (DRAINAGE AND MARKERS)
16	CONSTRUCTION DETAILS 00-2 (TYPICAL GRADING)
17	STANDARD STRUCTURE SHEET S 48-46 (THREE CABLE GUARD RAIL)
18	STANDARD STRUCTURE SHEET S 18-30 (H 20) 89'-0" SPAN
19	STANDARD STRUCTURE SHEET S 80-1 (CURB & RAIL DETAILS)
20	STANDARD STRUCTURE SHEET S 8-20 (DETAILS C, D, E, H, J, K, & L)
21	STANDARD STRUCTURE SHEET S 8-11 (BARRICADES, SIGNS & LIGHTS) BRIDGE
22-31	CROSS-SECTIONS
32-37	CHANNEL SECTIONS

See Sh. 1A For List of Sheets to be Revised

STATE OF VERMONT
DEPARTMENT OF HIGHWAYS

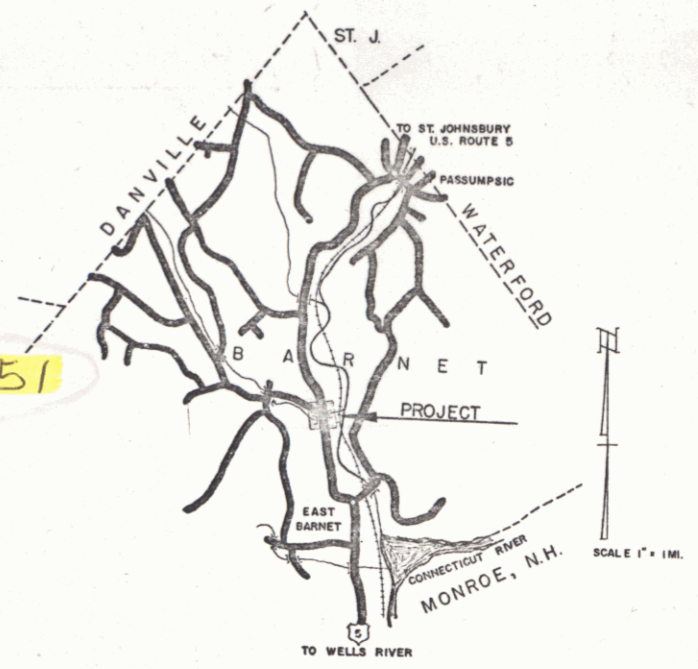
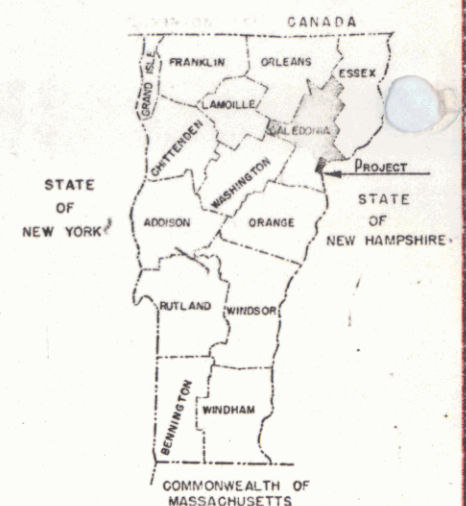
PROPOSED IMPROVEMENT

FEDERAL PROJECT

TOWN OF BARNET
COUNTY OF CALEDONIA

U.S. ROUTE 5 Pin# 99R351
BRIDGE OVER JOE'S BROOK (B-123)
WELLS RIVER-ST. JOHNSBURY ROAD

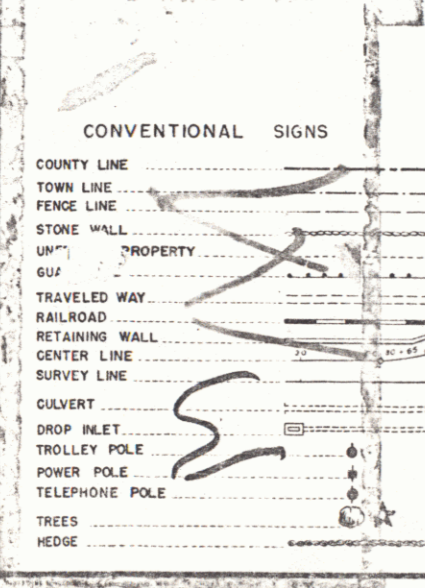
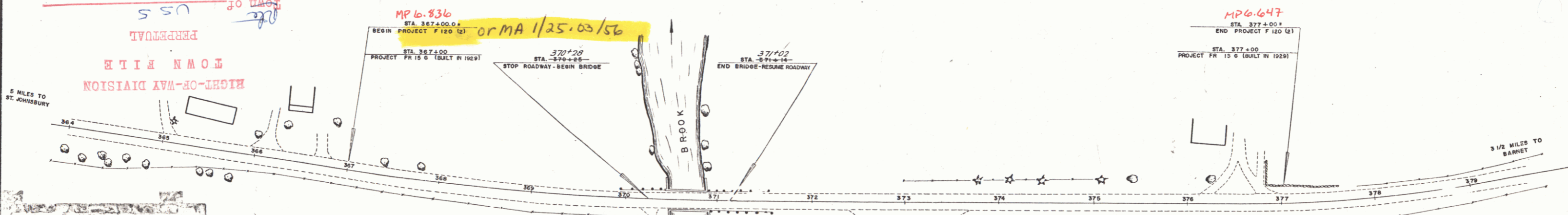
FED. ROAD DISTRICT NO.	STATE	PROJECT NO.	SHEET NO.	TOTAL SHEETS
1	VT	F. 120(2)	1	37



PROJECT NAME & NUMBER	TYPE	PAVEMENT AREA
BARNET MA-1/25.03/56	BRIDGE	S.T.
RECORD PLANS		
MATERIALS		
SUB-BASE OF GRAVEL	REINFORCING STEEL Vt. Struct. Steel &	
BASE OF 3" HD	STRUCTURAL STEEL Vt. Struct. Steel &	
FINISHED GRAVEL	R.C.P.	
REFINED TAR	A.C.C.M.P.	
CUTBACK ASPHALT	CABLE FOR GUARD RAIL	
SA - GRAV. OR	GUARD RAIL PAINT WHITEE Proof Paint	
PEASTONE FOR SEAL	NOVELTOWN PAINT	
OLEFIN CEMENT	White Dragon Alpha	
CONTRACTOR OLSEN CONSTRUCTION	CONTRACT DATED AUG. 11, 1955	
RESIDENT ENGR. D.R. BORZONE	CONTRACT STARTED AUG. 15, 1956	
INSPECTORS	CONTRACT COMPLETED AUG. 15, 1956	
RECORD PLANS H.B. CALLAWAY	CONTRACT ACCEPTED AUG. 15, 1956	

BEGINNING AT A POINT APPROXIMATELY 3.102 MILES SOUTH OF THE WATERFORD-BARNET TOWN LINE AND EXTENDING SOUTHERLY 1,000.0 FEET

LENGTH OF ROADWAY 5110 FEET = 0.972 MILE
 LENGTH OF BRIDGE 740 FEET = 0.017 MILE
 LENGTH OF PROJECT 1000.0 FEET = 0.189 MILE



CONVENTIONAL SIGNS

SYMBOL	DESCRIPTION
---	COUNTY LINE
- - -	TOWN LINE
---	FENCE LINE
---	STONE WALL
---	UNIMPROVED PROPERTY
---	GRAVEL
---	TRAVELED WAY
---	RAILROAD
---	RETAINING WALL
---	CENTER LINE
---	SURVEY LINE
---	CULVERT
---	DROP INLET
---	TROLLEY POLE
---	POWER POLE
---	TELEPHONE POLE
---	TREES
---	HEDGE

SCALES

TITLE	1" = 50'
TYPICAL	1" = 5'
PLAN	1" = 50'
PROFILE HORIZONTAL	1" = 50' @ 20'
VERTICAL	1" = 10'
CROSS-SECTIONS	1" = 5'

THESE PLANS ARE SUBJECT TO SUCH REVISIONS AS MAY BE REQUIRED BY THE BUREAU OF PUBLIC ROADS OR THE COMMISSIONER OF HIGHWAYS.

CONSTRUCTION IS TO BE CARRIED ON IN ACCORDANCE WITH THE PLANS AND THE STANDARD ROAD AND BRIDGE SPECIFICATIONS OF 1948, AS APPROVED JULY 25, 1949 BY THE BUREAU OF PUBLIC ROADS, INCLUDING ALL SUBSEQUENT APPROVED REVISIONS AND SUCH REVISED SPECIFICATIONS AND SPECIAL PROVISIONS AS ARE SUBMITTED WITH THE PLANS.

DEPARTMENT OF COMMERCE
BUREAU OF PUBLIC ROADS

APPROVED: *M.A. Callaway* DISTRICT ENGINEER DATE: 1/25.03/56

PROJECT NO. 120(2)

SHEET 1 OF 37 SHEETS

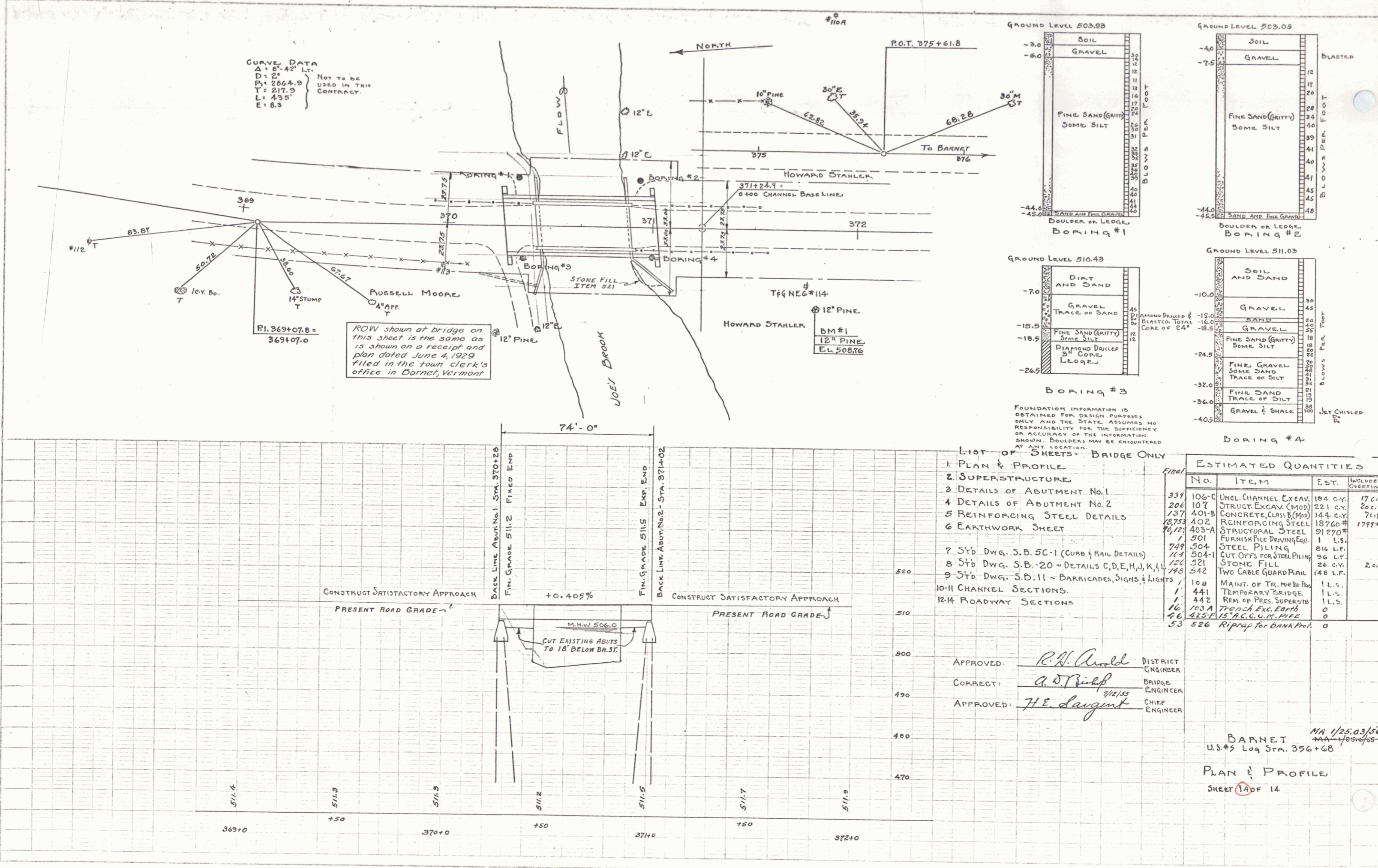
APPROVED: <i>M.A. Callaway</i> CONSTRUCTION ENGINEER DATE: 5-23-56	APPROVED: <i>A.B. Bishop</i> BRIDGE ENGINEER DATE: 5-23-56	APPROVED: _____ DISTRICT ENGINEER DATE: _____	APPROVED: <i>V.A. Mansueti</i> HIGHWAY ENGINEER DATE: _____	APPROVED: _____ CHIEF ENGINEER DATE: _____
--	--	---	---	--

CURVE DATA
 Δ = 8° 42' 13"
 D = 2°
 P = 2864.9
 T = 217.9
 L = 435'
 E = 8.3'

NOT TO BE USED IN THIS CONTRACT.

PLAN
 CHECKED BY: []
 DRAWN BY: []
 DATE: []

PROFILE
 CHECKED BY: []
 DRAWN BY: []
 DATE: []



ROW shown at bridge on this sheet is the same as is shown on a receipt and plan dated June 4, 1929 filed in the town clerk's office in Dornet, Vermont

FOUNDATION INFORMATION IS OBTAINED FOR DESIGN PURPOSES ONLY AND THE STATE ASSUMES NO RESPONSIBILITY FOR THE SUFFICIENCY OR ACCURACY OF THE INFORMATION. SMOOTH BOULDERS MAY BE ENCOUNTERED AT ANY LOCATION.

LIST OF SHEETS - BRIDGE ONLY

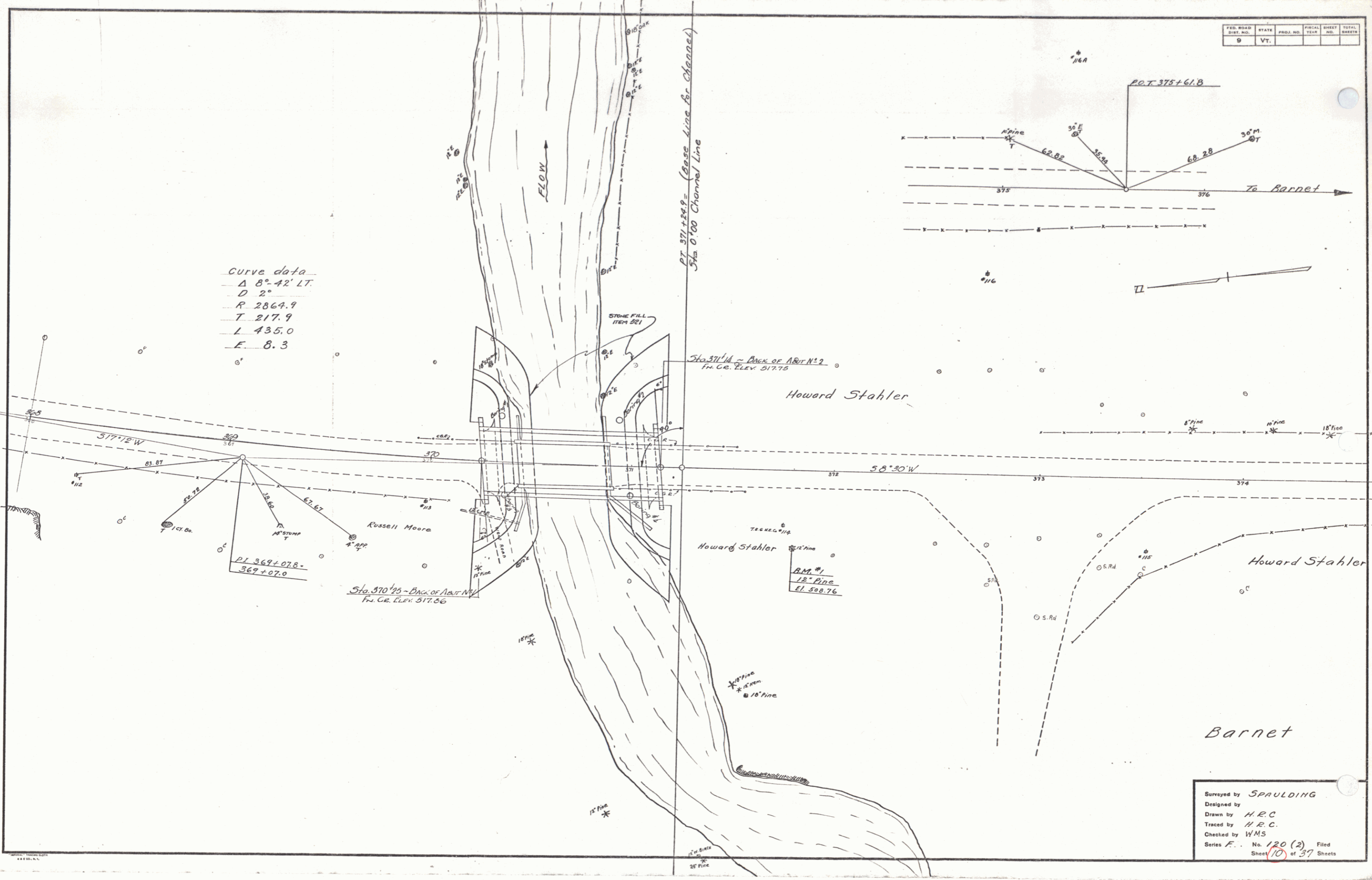
- 1 PLAN & PROFILE
- 2 SUPERSTRUCTURE
- 3 DETAILS OF ABUTMENT NO. 1
- 4 DETAILS OF ABUTMENT NO. 2
- 5 REINFORCING STEEL DETAILS
- 6 EARTHWORK SHEET
- 7 STD DWG. S.B. 5C-1 (CURB & RAIL DETAILS)
- 8 STD DWG. S.B. 20 - DETAILS C, D, E, H, J, K, L
- 9 STD DWG. S.B. 11 - BARRICADES, SIGNS & LIGHTS
- 10-11 CHANNEL SECTIONS.
- 12-14 ROADWAY SECTIONS.

ESTIMATED QUANTITIES			
Final	No.	ITEM	EST.
337	106-C	UNCL. CHANNEL EXCAV.	184 C.Y.
206	107	STRUCT. EXCAV. (MOD)	221 C.Y.
137	401-B	CONCRETE CLAS. B (MOD)	144 C.Y.
1373	402	REINFORCING STEEL	18760 #
1612	403-A	STRUCTURAL STEEL	91270 #
1	501	FURNISH PILE DRIVING EQ.	1 L.S.
747	504	STEEL PILING	816 L.F.
14	504-H	CUT OFFS FOR STEEL PILING	36 L.F.
126	521	STONE FILL	26 C.Y.
748	542	TWO CABLE GUARDRAIL	148 L.F.
1	102	MAINT. OF TR. PIERCE BR.	1 L.S.
1	441	TEMPORARY BRIDGE	1 L.S.
1	442	REM. OF PRES. SUPERSTR.	1 L.S.
16	103 A	TRENCH EXC. EARTH	0
46	103 B	REINFORCING PIPE	0
53	526	Riprap for Bank Prot.	0

APPROVED: *R.H. Arnold* DISTRICT ENGINEER
 CORRECT: *A.J. Bishop* BRIDGE ENGINEER
 APPROVED: *H.E. Laughton* CHIEF ENGINEER

BARNET MA 1/25.03/56
 U.S.#3 Log Sta. 356+68
 PLAN & PROFILE
 SHEET 10 OF 14

FED. ROAD DIST. NO.	STATE	PROJ. NO.	YEAR	SHEET NO.	TOTAL SHEETS
9	VT.				



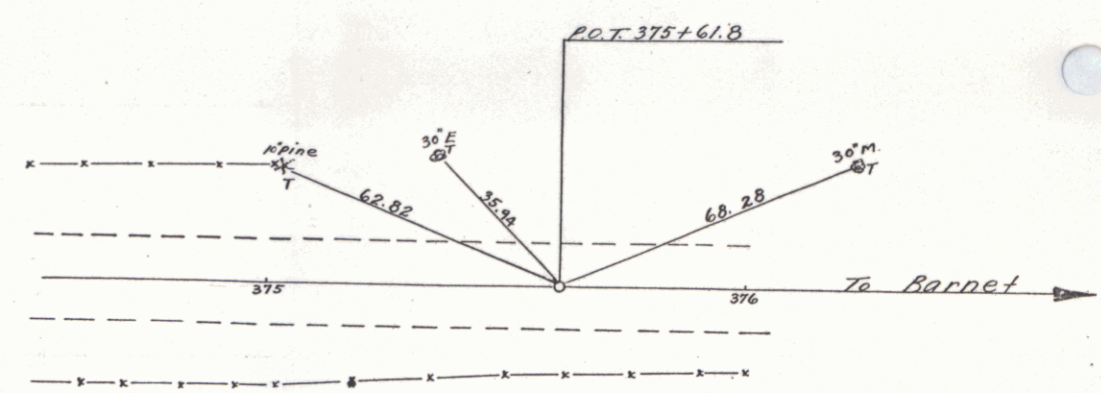
Curve data
 Δ 8° 42' LT.
 D 2"
 R 2864.9
 T 217.9
 L 435.0
 E 8.3

PT 371+24.9 = (Base Line for Channel)
 3/4 0'00 Channel Line

Sta 371+14 = Back of Riv. N° 2
 Fin. Gr. Elev. 517.75

Sta. 370+25 = Back of Riv. N° 1
 Fin. Gr. Elev. 517.86

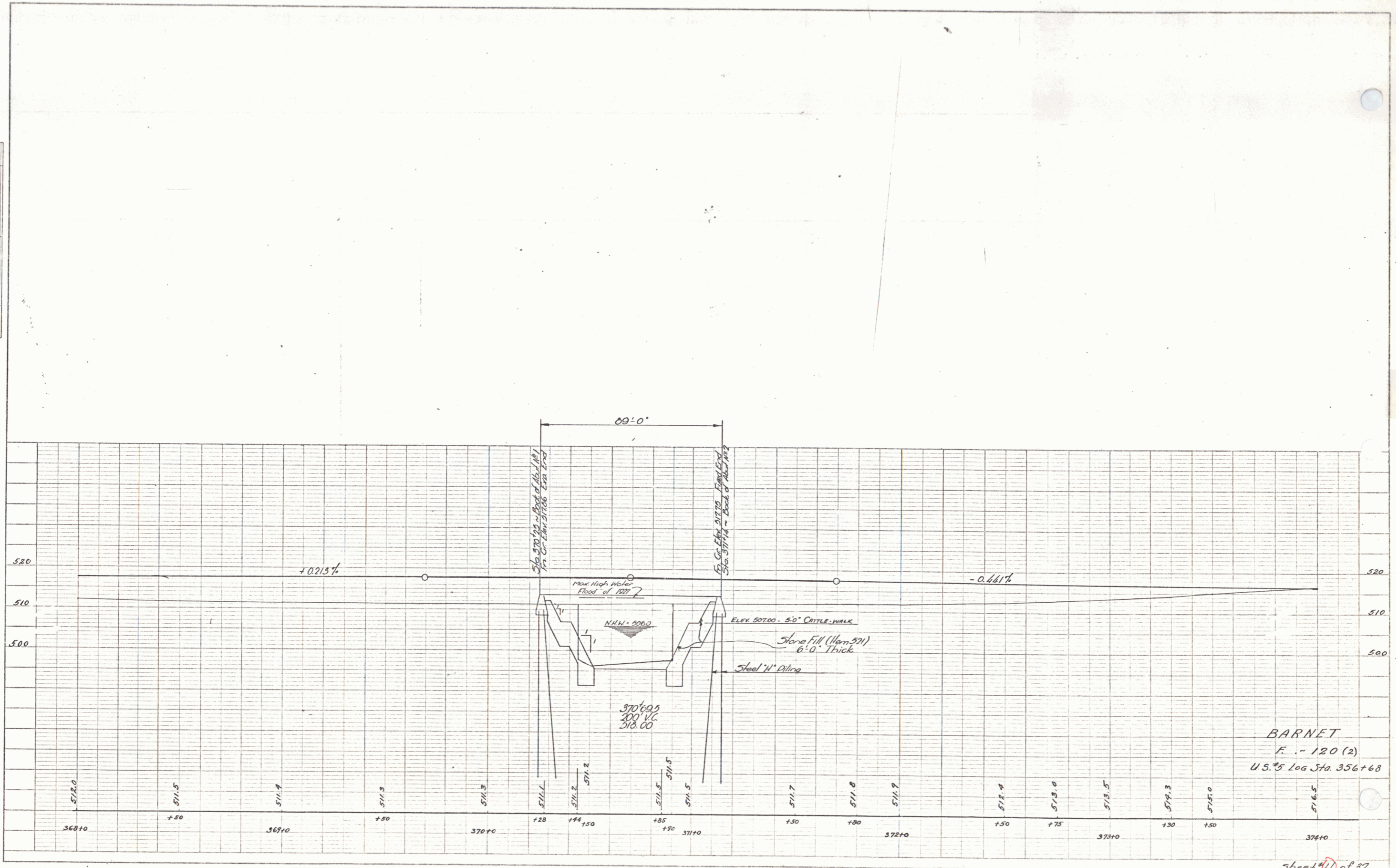
B.M. #1
 12" Pipe
 El. 508.76



Surveyed by SPAULDING
 Designed by
 Drawn by H.R.C.
 Traced by H.R.C.
 Checked by WMS
 Series F. No. 120 (2) Filed
 Sheet 10 of 37 Sheets

PLAN
 DATE: _____
 DRAWN BY: _____
 CHECKED BY: _____
 NOTE BOOK NO. _____
 PROJECT NAME: _____
 SHEET NO. _____

PROFILE
 DATE: _____
 DRAWN BY: _____
 CHECKED BY: _____
 NOTE BOOK NO. _____
 PROJECT NAME: _____
 SHEET NO. _____



BARNET
 F. - 120 (2)
 U.S. Log Sta. 356+68

PLATE 1-PLAN/PROFILE OF BRIDGE
 MADE BY THE U.S. GEOLOGICAL SURVEY
 WASHINGTON, D.C. 20540

Sheet 11 of 37

PLAN
 DRAWN BY: *Spearing*
 CHECKED BY: *R.R. Conway*
 DATE: 1-27
 SHEET NO. 1

PROFILE
 DRAWN BY: *Spearing*
 CHECKED BY: *R.R. Conway*
 DATE: 1-27
 SHEET NO. 1

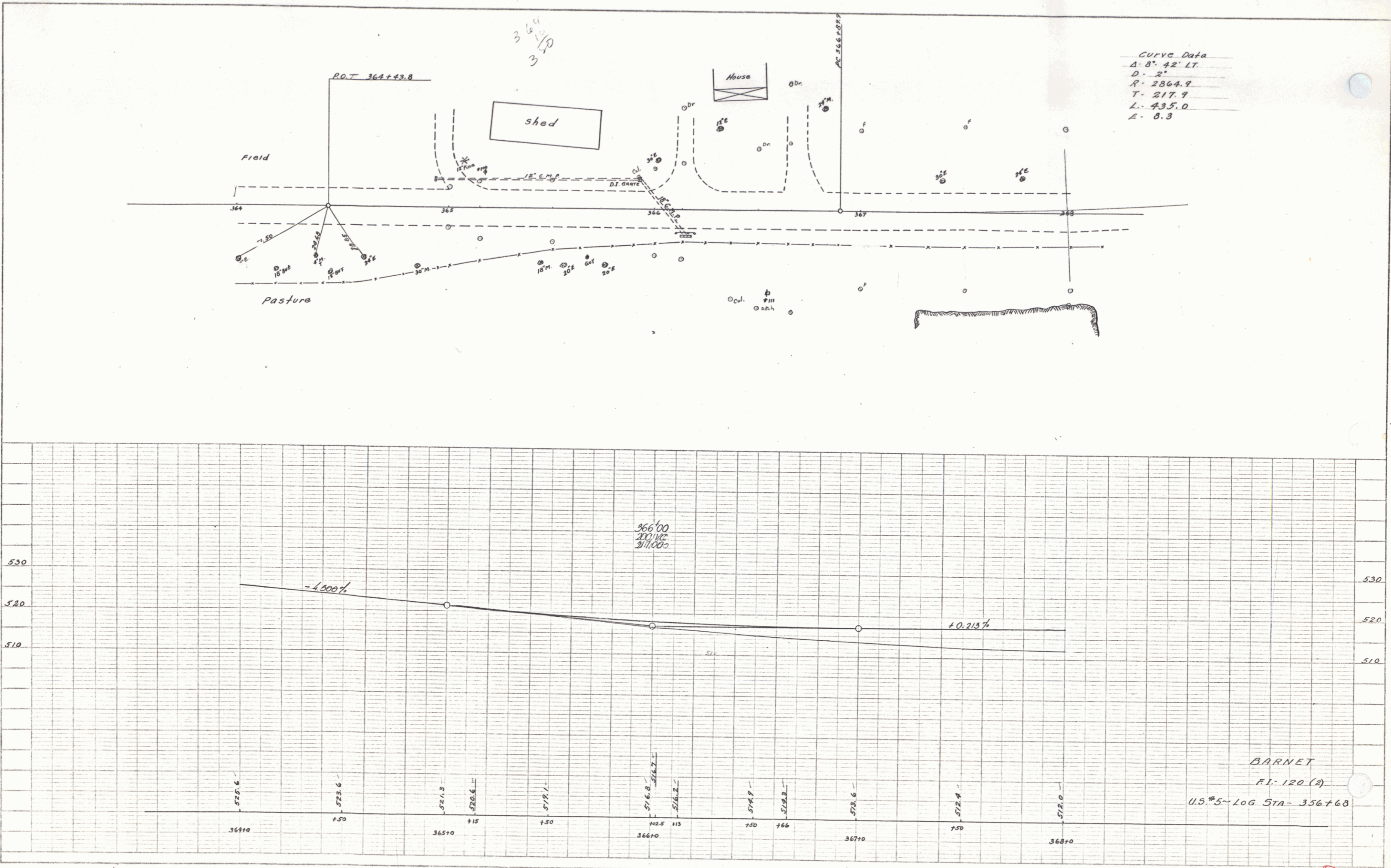


PLATE 1 - PLAN-PROFILE OF P.A. & R.R. STATION
 JENNIFER & SONS CO., NEW YORK
 P.O. BOX NO. 100

BARNET
 P.I. 120 (2)
 U.S. #5 - LOG STA - 356+68

Sheet 1 of 7

7